

CADILLAC



CADILLAC MOTOR CAR CO.

1906 Cadillac - advance catalog, four  
cylinder cars.



**CADILLAC  
MOTOR CAR CO.**

CADILLAC AUTOMOBILE CO. | LELAND & FAULKNER MFG CO.

MEMBER'S ASSOCIATED LICENSED  
AUTOMOBILE MANUFACTURERS

FACTORY AND GENERAL OFFICES  
**DETROIT, MICH.**

CABLE ADDRESS  
"CADAUTO, DETROIT"

CODE J:  
A B C, 5TH EDITION, LIEBER'S  
WESTERN UNION, DIRECTORY

THE LARGEST  
MOST COMPLETE  
AND BEST EQUIP-  
PED FACTORY IN  
THE WORLD DE-  
VOTED EXCLUSIVE-  
LY TO THE PRO-  
DUCTION OF HIGH  
GRADE MOTOR  
CARS.



## foreword

**T**HIS Advance Catalog is issued merely as an introduction to the line of Cadillac 1906 Four Cylinder Cars.

The name "CADILLAC" is in itself so significant of all that is good in automobile construction that the illustrations in this booklet with an outline of the essential features embodied in the construction of the cars are sufficient to satisfy the experienced motorist.

We have however in course of preparation, a catalog of our Four Cylinder Cars in which we shall enter more into details, both in descriptions and illustrations and which we shall be pleased to mail upon receipt of request.

CADILLAC MOTOR CAR CO.,  
Detroit, Michigan.

# Cadillac "Model H" Touring Car

"Model H" Runabout

"Model H" Touring Car

"Model H" Coupe

## SPECIFICATIONS

**MOTOR.** 30-Horse Power. Four cylinders, four cycle,  $4\frac{1}{2}$  inch bore by 5 inch stroke, arranged vertically under hood, all parts readily accessible. Copper water jacket. Water cooled.

**CARBURETOR.** Special type for four cylinder motor, proven by exhaustive tests to be most effectual and economical.

**COMMUTATOR.** New and efficient design placed horizontally on vertical shaft with oil container.

**IGNITION.** Jump spark. Storage batteries. (Two sets.)

**LUBRICATOR.** Special Cadillac type, mechanical pump feed, quantity regulated by speed of engine.

**RADIATOR.** Honeycomb pattern of great capacity and exceptional cooling efficiency.

**TRANSMISSION.** Cadillac planetary type, specially cut and hardened gears, three forward speeds and reverse.

**DRIVE.** Direct shaft with specially cut and hardened bevel gears.

**BEARINGS.** Genuine Hess-Bright ball bearings throughout, including axles, front wheels, transmission and engine thrust bearings.

**CONTROL.** Very effectual by instantaneously acting governor.

**BRAKES.** Double acting, one set expanding inside and the other contracting on drums on rear wheels. Sufficiently powerful to lock wheels almost instantly.

**STEERING GEAR.** Our own new design, positive and reliable in its action.

**FRAMES** Pressed steel, channel pattern.

**SPRINGS.** Four spring suspension, semi-elliptic front, three-quarter elliptic rear.

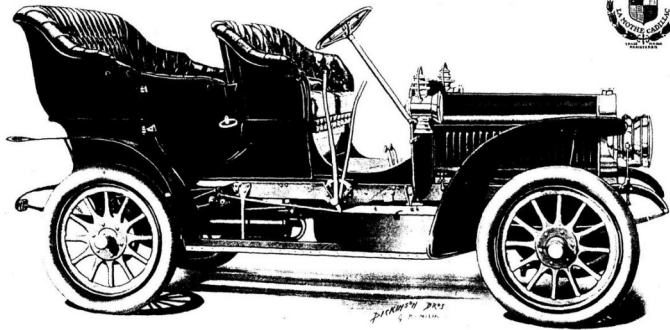
**BODIES.** Exclusive Cadillac design of unusual elegance, upholstered in hand buffed leather over deep coil springs and genuine curled hair.

**MATERIAL.** Highest grade throughout. All parts made accurately to gauge and thoroughly interchangeable.

Wheel Base,	. . . . .	102 inches.
Wheel Tread,	. . . . .	56½ inches.
Wheels,	. . . . .	32 inches.
Tires,	. . . . .	4 inches.

Unless otherwise specified, the Hartford Perfected Dunlop Tires will be furnished as regular equipment. For tire options, see page 12.

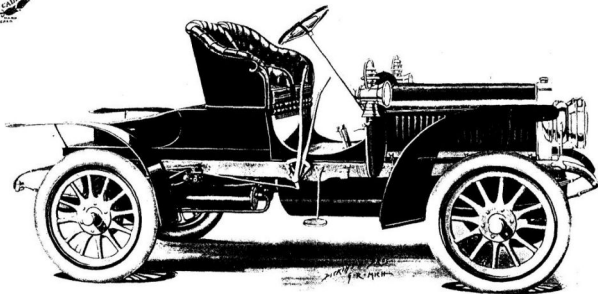
**CADILLAC**



See Specifications Page 8

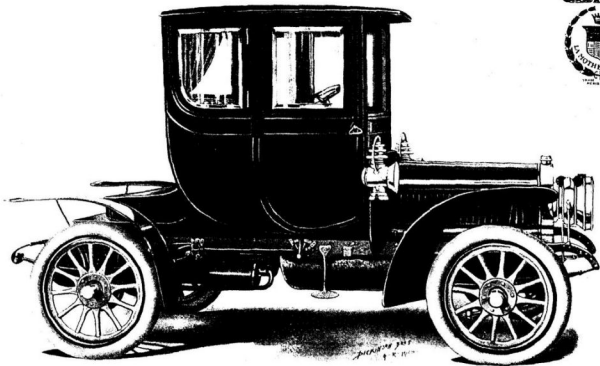
**CADILLAC "MODEL H" TOURING CAR**  
PRICE \$ 2500.00 F.O.B. DETROIT  
(LAMPS NOT INCLUDED)

**CADILLAC**



See Specifications Page 4

**CADILLAC "MODEL H" RUNABOUT**  
PRICE \$2400.00 F.O.B. DETROIT  
(LAMPS NOT INCLUDED)



CADILLAC



See Specifications Page 4

CADILLAC "MODEL H." COUPE  
PRICE \$3000.00 F.O.B. DETROIT  
(LAMPS NOT INCLUDED)



# Cadillac "Model 8" Touring Car

## SPECIFICATIONS.

**MOTOR.** Forty horse power, four cylinders, four cycle, 5 inch bore by 5 inch stroke, arranged vertically under hood, all parts readily accessible. Copper water jacket. Water Cooled.

**CARBURETOR.** Special type for four cylinder motor, proven by exhaustive tests to be the most effectual and economical.

**COMMUTATOR.** New and efficient design placed horizontally on vertical shaft with oil container.

**IGNITION.** Jump spark. Storage Batteries. (Two sets.)

**LUBRICATOR.** Special Cadillac type, mechanical pump feed, quantity regulated by speed of engine.

**RADIATOR.** Honeycomb pattern of great capacity and exceptional cooling efficiency.

**TRANSMISSION.** Cadillac planetary type, specially cut and hardened gears, three forward speeds and reverse.

**DRIVE.** Direct shaft with specially ground and hardened bevel gears.

**BEARINGS.** Genuine Hess-Bright ball bearings throughout including axles, front wheels, transmission and engine thrust bearings.

**CONTROL.** Very effectual by instantaneously acting governor.

**BRAKES.** Double acting, one set expanding inside and the other contracting on drums on rear wheels. Sufficiently powerful to lock wheels almost instantly.

**STEERING GEAR.** Our own new design, positive and reliable in its action.

**FRAMES.** Pressed steel, channel pattern.

**SPRINGS.** Five spring suspension, two semi-elliptic front, two semi-elliptic and one transverse spring in rear.

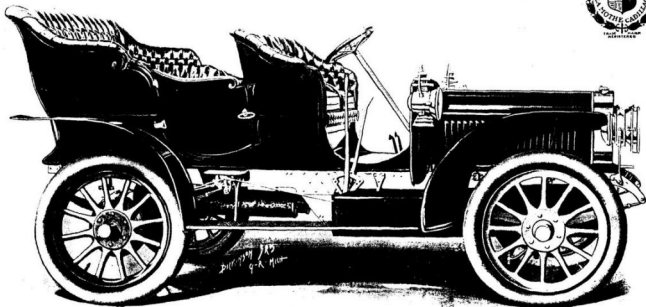
**BODIES.** Exclusive Cadillac design of unusual elegance, upholstered in hand buffed leather over deep coil springs and genuine curled hair affording unexcelled luxuriousness.

**MATERIAL.** Highest grade throughout, all parts being made accurately to gauge and thoroughly interchangeable.

Wheel base . . . . .	110 inches.
Wheel tread . . . . .	56½ inches.
Wheels . . . . .	36 inches.
Tires . . . . .	4 inch front, 4½ inch rear.

Unless otherwise specified, the Hartford Perfected Dunlop Tires will be furnished as regular equipment. For tire options see Page 12.

CADILLAC



See Specifications Page 8

CADILLAC "MODEL L." TOURING CAR  
PRICE \$ 3750.00 F.O.B. DETROIT  
(LAMPS NOT INCLUDED)

## Cadillac "Model L" Limousine

In the Cadillac "Model L" Limousine, we offer a car which embodies everything in automobile construction appealing to those who desire the maximum of comfort and luxury.

The Chassis is that of our regular Model L.

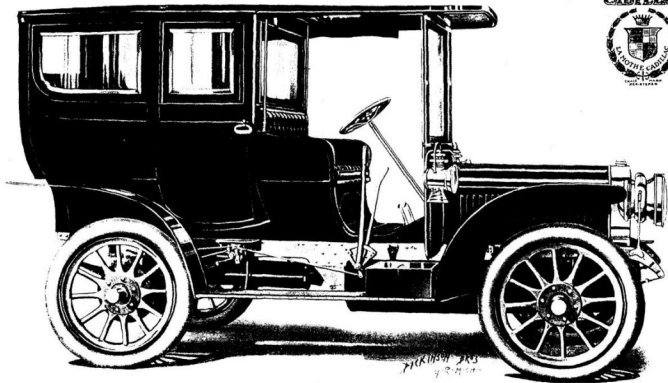
The body is large and roomy affording a seating capacity for five persons inside and for two persons on the front seat. It is substantially constructed and elegantly finished, upholstered in morocco leather over steel coil springs and the ceiling upholstered in satin. It is equipped with electric light, electric signal bell, speaking tube, etc.

The French Plate Glass in windows and doors may be lowered when so desired.

Horse Power,	40
Wheel Base,	110 inches.
Wheel Tread,	56½ inches.
Wheels,	36 inches.
Tires,	4 inch front, 5 inch rear.

Unless otherwise specified, the Hartford Perfected Dunlop Tires will be furnished as regular equipment. For tire options, see page 12.

See Special Mechanical Features, page 8.



See Specifications Page 8

CADILLAC "MODEL L" LIMOUSINE  
PRICE \$ 5000 F.O.B. DETROIT  
(LAMPS NOT INCLUDED)

## Tires

**I**N ORDER TO OFFER Cadillac purchasers the choice of a number of different tires which can be furnished without the delay usually entailed by such options, we have at heavy expense, had perfected for us a Universal Rim to which may be fitted either of the six following styles of tires.

### DUNLOP TYPE

HARTFORD  
MORGAN & WRIGHT  
INDIANAPOLIS G & J

### CLINCHER TYPE

HARTFORD  
MORGAN & WRIGHT  
INDIANAPOLIS G & J

Unless otherwise ordered, we will equip to this Universal Rim, the Hartford Dunlop tires on all cars listed in this catalogue. We will, however, when so ordered, equip cars with any other make of tire ABOVE MENTIONED without extra charge.

### TIRE GUARANTY.

All Tires and Rims used on Cadillac Automobiles are guaranteed by their makers and should be sent to them (not to us), transportation charges prepaid.

#### SEND HARTFORD TIRES TO HARTFORD RUBBER WORKS COMPANY AT ANY OF THE FOLLOWING ADDRESSES

Hartford, Conn. . . . .	88 Chambers Street	Cleveland, Ohio . . . . .	1831 Euclid Avenue
New York City . . . . .	1769 Broadway	Detroit, Mich. . . . .	256 Jefferson Avenue
New York City . . . . .	494 Atlantic Avenue	Chicago, Ill. . . . .	83 Michigan Avenue
Boston, Mass. . . . .	138 North Tenth Street	Denver, Colo. . . . .	1564 Broadway
Philadelphia, Pa. . . . .	686 Main Street	San Francisco, Cal. . . . .	501 Golden Gate Avenue
Buffalo, N. Y. . . . .		Los Angeles, Cal. . . . .	380 South Los Angeles Street

#### SEND MORGAN & WRIGHT TIRES TO MORGAN & WRIGHT AT ANY OF THE FOLLOWING ADDRESSES

New York City . . . . .	214 W. 47th Street	Chicago, Ill. . . . .	309 Michigan Avenue
Boston, Mass. . . . .	228 Columbus Avenue	Syracuse, N. Y. . . . .	212-14 So. Clinton Street
Cleveland, Ohio . . . . .	347 Huron Street	Philadelphia, Pa. . . . .	Broad and Vine Street
Dayton, Ohio . . . . .	417 E. 5th Street	Atlanta, Ga. . . . .	35 Edgewood Avenue
Minneapolis, Minn. . . . .	788 Hennepin Avenue	Denver, Colo. . . . .	1562 Broadway
Detroit, Mich. . . . .	265 Jefferson Avenue	Los Angeles, Cal. . . . .	940 So. Main Street
St. Louis, Mo. . . . .	538 N. Vandeventer Avenue	Portland, Oregon . . . . .	86 Sixth Street
San Francisco, Cal. . . . .	1067 Mission Street		

#### SEND G & J TIRES TO G & J TIRE COMPANY AT ANY OF THE FOLLOWING ADDRESSES

Indianapolis, Ind. . . . .	337 Huron Street	San Francisco, Cal. . . . .	327 Van Ness Avenue
Cleveland, Ohio . . . . .	43 Columbus Avenue	Denver, Colo. . . . .	1528 Court Place
Boston, Mass. . . . .	429 Wabash Avenue	Buffalo, N. Y. . . . .	9 W. Huron Street
Chicago, Ill. . . . .	247 Jefferson Avenue	Philadelphia, Pa. . . . .	711 No. Broad Street
Detroit, Mich. . . . .			