

2013
HYUNDAI

SONATA



HYUNDAI SONATA. THE POWER OF SUGGESTION, RAISED TO AN ART FORM.

When we built the Sonata, we gave it all the things people told us they wanted in a mid-size sedan. More style. More room. A 5-Star Safety Rating. A request for more power and more efficiency? No problem. Sonata uses a Gasoline Direct Injection 4-cylinder engine to generate the most standard horsepower in its class, with an impressive EPA-estimated highway rating of 35 MPG.¹ A turbocharged version was also conceived for drivers seeking V6 power with 4-cylinder fuel efficiency.

Today, we offer three Sonata models: GLS, with premium features uncommon in most midsize sedans; SE, with sport tuning for a higher level of responsiveness and performance; and Limited, a Sonata fully equipped with advanced technologies that satisfy your highest expectations of comfort and convenience. But our engineers still weren't done. They went even further, creating Sonata Hybrid. Its rewarding combination of best-in-class power and passenger volume with advanced lithium polymer battery technology has quickly established Sonata Hybrid among the leaders in its category.

WHAT ARE THE EXPERTS SAYING?

A funny thing happens when you build a car like Sonata: The experts take notice. After driving it last year, *AUTOMOBILE Magazine* exclaimed, "The Sonata emerges as an unquestioned leader in a segment that's bursting with excellent automobiles."²

Car and Driver summed up Sonata by saying, "...its greatness is undeniable."³ Of course, until we hear from you, we haven't heard from all the experts. So visit your Hyundai dealer soon, and tell us what you think.



¹EPA estimates for comparison only. Your actual mileage will vary with options, driving conditions, driving habits and vehicle's condition.

²AUTOMOBILE Magazine, February 2011. ³Car and Driver, November 2010.



SONATA SE in Harbor Gray Metallic



“The 2013 Hyundai Sonata is a roomy car, almost ‘large’ by EPA standards; there’s soaring headroom and leg room in front, and an unusually long front-seat track so driver and passenger can have as much space as they need.” – 2013 Hyundai Sonata Review, TheCarConnection.com, May 2012



SONATA 2.0T LIMITED in Camel Leather



SONATA 2.0T LIMITED in Camel Leather

THE STATUS QUO ISN'T JUST UPSET. IT'S TURNED UPSIDE DOWN.

In the past few years, a lot has changed in the automotive world. New reputations for quality are being made, as innovative technologies transform what's expected from a midsize sedan. All of that room in Sonata's "class-above" interior is filled with a generous list of standard comfort and convenience features. Features like a Bluetooth® hands-free phone system with audio streaming, along with steering-wheel cruise, audio and phone controls that would surprise some luxury car owners.¹ Sonata offers plenty of premium amenities, too, like heated rear seats, an available proximity key with push-button start, and an available pillar-to-pillar panoramic sunroof that offers extra-wide views of sunny and starry skies.



ADVANCED CLIMATE CONTROL

In Sonata, the driver and front passenger can each set their own cabin temperature preferences. The available dual automatic climate controls include separate settings for each of three body-section zones, so you can be comfortable from head to toe.



REARVIEW CAMERA

Sonata's available navigation system features a rearview camera that displays views from behind the car on a central in-dash touchscreen. Guidelines on the screen help direct you into tight spots and take the guesswork out of backing up.



SWALLOWS CARGO

Sonata's trunk is 16.4 cubic feet of cargo room just waiting to swallow suitcases, golf bags and bulky boxes. Isn't that what the trunk of a sedan that's going places is supposed to do?



8-WAY POWER DRIVER SEAT

Settle into your ideal driving position with the 8-way power-adjustable driver seat, complete with power lumbar support. For 2013, you also get heated front seats when you order Sonata SE or GLS with the available Popular Equipment Package.



SPEAK YOUR MIND

Talk to Sonata, and it hears you. With voice recognition technology, Sonata's advanced navigation system makes it easier than ever to find your way. NavTraffic² helps you find nearby businesses like gas stations or ATMs, get current traffic updates, and check the weather, stocks and sports scores – all in real time.²



MUSIC COMES ALIVE

Plug in your iPod® or MP3 player and enjoy listening to your favorite playlists through a high-fidelity Infinity® AM/FM/SiriusXM®/CD/MP3 audio system that adds lifelike sound quality to your music. Eight speakers, a 400-Watt external amplifier and resonant subwoofer fill the cabin with crystal-clear sound.³



¹ The Bluetooth® wordmark and logos are registered trademarks owned by Bluetooth SIG, Inc., and any use of such marks by Hyundai is under license. Other trademarks are those of their respective owners. ² SiriusXM® Satellite Radio, NavTraffic® and SiriusXM® Data Services require a SiriusXM subscription, sold separately after a complimentary introductory period. All fees and programming are subject to change. Traffic and weather channels only available in select markets, and SiriusXM service is only available in the 48 contiguous United States. See your dealer for details. The SiriusXM name is a registered trademark of SiriusXM Satellite Radio Inc. All other trademarks are property of their respective owners. ³ iPod® is a registered trademark of Apple Inc. Infinity® is a registered trademark of Harman International Industries, Inc.

HYUNDAI BLUE LINK®: LIFE, MADE EASIER.

A Hyundai Sonata with Blue Link puts the world at your fingertips. It features enhanced navigation that not only helps you get where you're going, but reveals shortcuts and points of interest along the way.¹ It can send you real-time traffic updates and find gas stations with the lowest prices. It can locate restaurants and connect you to reviews from other diners. Location Sharing and Voice Text Messaging features let you stay in touch with friends and family,² while a Blue Link mobile app lets you lock/unlock, locate and start your car remotely using your smart phone.³

In the event of an emergency, Blue Link instantly knows whom to call and where to send help. There's even a useful feature that sends you advance notices of regularly scheduled maintenance intervals to keep your car in prime condition. In all, more than 30 services and features are included in three available packages that let you customize this technology to your individual needs. For details, please visit HyundaiBlueLink.com.

The Blue Link logo features the word "BlueLink" in a blue, italicized sans-serif font. Above the letter "i" in "Link" are three concentric blue circles, suggesting a signal or connectivity.

**BLUE LINK
MAIN MENU**

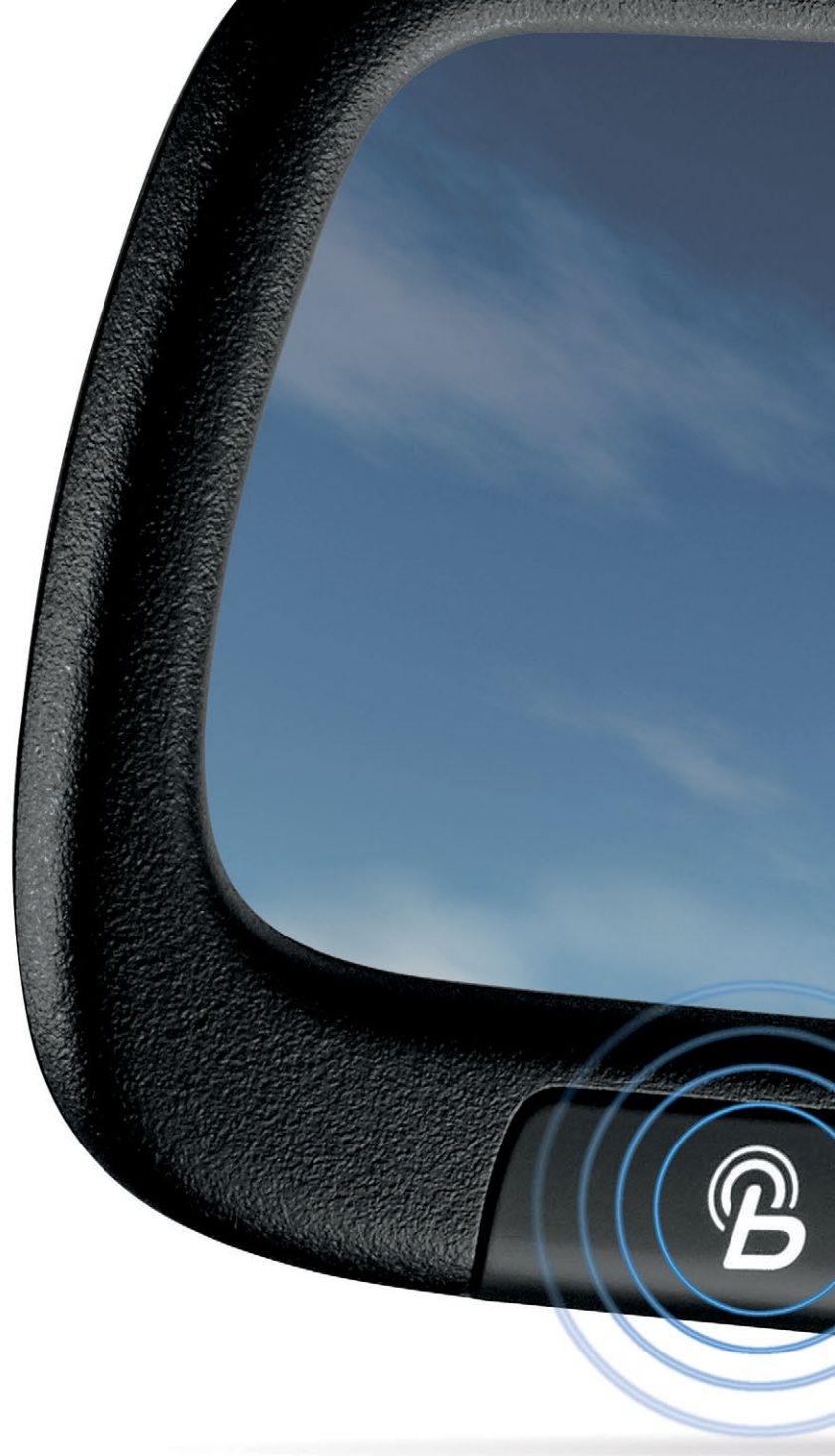


**ENHANCED
NAVIGATION
SERVICES**



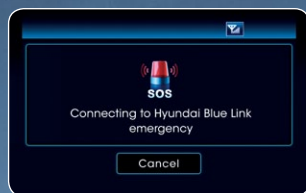
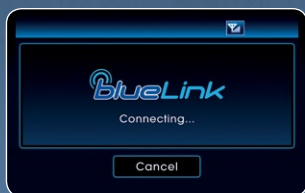
**EMERGENCY
ASSISTANCE**

¹Blue Link® subscription service agreement required. Features vary by subscription plan. Blue Link service works using CDMA-based cellular networks in the 50 United States. Blue Link service is not available where there is no cellular coverage, particularly in enclosed or remote areas. Service availability may be affected by signal strength, foliage, weather, topographical conditions (mountains) and nearby structures (tall buildings, tunnels) and other factors. For additional details and system limitations, visit HyundaiBlueLink.com. Hyundai is a registered trademark of Hyundai Motor Company. All rights reserved. ©2012 Hyundai Motor America. ²Requires a Blue Link subscription and a Bluetooth-compatible phone paired to the vehicle and assigned as the primary driver's mobile phone number in your account. Standard text message rates apply. ³Remote Vehicle Start is only available for Push Button Start equipped vehicles with an Automatic Transmission or a Dual Clutch Transmission (DCT). Not available on all models. ⁴Blue Link agents will contact existing emergency service responders. Only use Blue Link and corresponding devices when it is safe to do so.



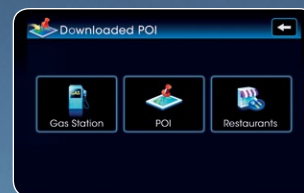
BLUE LINK ASSURANCE PACKAGE

Blue Link helps ensure you're not alone in an emergency. Automatic Collision Notification, SOS Emergency Assistance and Enhanced Roadside Assistance report your position to Hyundai-trained operators and connect you 24/7/365.¹ You can also receive monthly email reports with comprehensive vehicle diagnostics, ensuring your Sonata delivers optimal performance with the best-possible fuel economy.



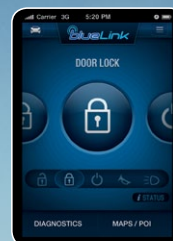
BLUE LINK GUIDANCE PACKAGE

More than getting you to your destination, the features in this package can also tell you what you'll find when you arrive – from traffic and gas prices to restaurants and museums. Use voice commands to find points of interest, the fastest routes with the least amount of traffic, the cheapest gas, the highest rated restaurants, and more. There's even an Eco-Coach that lets you monitor your mileage online and offers tips for improving your results. (Includes Assurance + Essentials Packages)

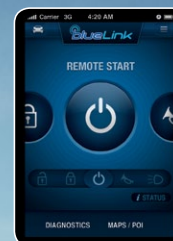


BLUE LINK ESSENTIALS PACKAGE

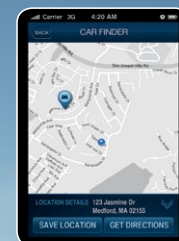
Blue Link is equal parts fun, convenience and safety. Use your smartphone to remotely lock/unlock your car or flash the lights and honk the horn to find it in a crowded parking lot. Other components let you send voice text messages from your car and share your location with friends. Secure your car with Stolen Vehicle Slowdown and recovery features. Or rest easy with Geo-Fence and Curfew Alerts that notify you (by text, automated phone message or email) when the geography or drive-time boundaries you've set are exceeded. You can also extend your peace of mind with convenient vehicle self-diagnostics. (Includes Assurance Package)



DOOR LOCK



REMOTE START



CAR FINDER





SONATA LIMITED in Midnight Black

SEE FOR YOURSELF HOW SONATA STACKS UP. ON PAPER. ON PAVEMENT. AND AT THE GAS PUMP, TOO.

Hyundai offers the most dynamic 4-cylinder engines in the midsize class. Sonata's 198/200-horsepower 2.4-liter Gasoline Direct Injection engine is the most powerful naturally aspirated 4-cylinder in its segment. At the same time, it satisfies the EPA's stringent Partial Zero Emissions Vehicle (PZEV) standards.¹ In Sonata 2.0T, twin-scroll turbocharging results in a combination that's tough to beat: 274-horsepower performance with an EPA-estimated 34 MPG highway rating. The 2013 Sonata Hybrid goes even further, sporting the best fuel efficiency rating in the Hyundai Sonata lineup.

Sonata's power is channeled through your choice of a 6-speed manual or 6-speed automatic transmission with SHIFTRONIC,[®] which offers the ease of an automatic or the fun of manual shifting using race-inspired steering wheel paddle shifters. You decide, depending on the mood and moment.



GASOLINE DIRECT INJECTION

With GDI, fuel is injected directly into the combustion chamber of each cylinder (instead of being injected into intake ports before each cylinder's intake valve). The result is markedly improved power and fuel efficiency with cleaner emissions.



DUAL-CVVT ENGINE

Dual Continuously Variable Valve Timing allows each engine intake and exhaust valve to be controlled independently. The result is improved response and fuel efficiency at all engine speeds, as well as a smooth idle and lower emissions.



TWIN-SCROLL TURBOCHARGING

A twin-scroll turbocharger design recovers more energy from the exhaust than a traditional turbocharger. Other benefits of a twin-scroll design include improved throttle responsiveness, more low-end torque, lower emissions and improved fuel economy.



THE SPORTY SONATA SE

For a sportier look and feel, Sonata SE features steering-wheel-mounted paddle shifters, a sport-tuned suspension with firmer bushings and larger stabilizer bar, sport seats with leather bolsters, 18" alloy wheels and dual chrome-tipped exhaust.



ACTIVE ECO SYSTEM

All Sonata models with automatic transmission have an Active ECO System that modifies engine and transmission control, resulting in as much as a 7% improvement in real-world fuel economy.²



SOPHISTICATED SUSPENSION

Sonata features sophisticated suspension and steering hardware with refined tuning for the GLS and Limited models – along with a sport-tuned suspension and steering for the SE trim.



¹PZEV available in some states. ²Hyundai internal estimate.

SONATA. HYBRID. NOW THERE'S A POWERFUL COMBINATION.

Some carmakers seem to insist that their hybrid models reflect a certain off-beat quirkiness. At Hyundai, our design philosophy is centered on creating a look that makes a statement, but in a sophisticated way – one that harmonizes with shapes found in nature. To create Sonata Hybrid, we wrapped our fuel-saving, carbon-cutting Blue Drive® technology in a fluidic sculpture of steel, glass and chrome that shapes every Sonata we build.

Next-Gen Hybrid Performance

Our latest Sonata Hybrid model delivers an exceptional combination of power and fuel economy. The key is the car's weight: Thanks to its innovative lithium polymer battery, Sonata Hybrid is significantly lighter than its key competitors. Yet its lightweight battery packs a heavyweight punch: It maintains power longer than conventional hybrid batteries, and feeds an electric motor that's paired with an optimized Atkinson Cycle DOHC 4-cylinder engine.

Try This On For Size

How confident can you be in our lithium polymer battery technology? It comes with a lifetime warranty – an industry first.¹ It also fits in the trunk, giving Sonata Hybrid the largest passenger volume among 2012 midsize hybrid sedans. A regenerative braking system even recharges the car's batteries on the road.

¹Warranty is non-transferable and not valid on vehicles exported to Korea.





SONATA HYBRID LIMITED in Blue Sky Metallic



SONATA 2.0T LIMITED in Sparkling Ruby

SAFETY. AT HYUNDAI, IT'S MORE THAN A LIST OF FEATURES. IT'S A MINDSET.

You don't become one of the first midsize cars to receive a 5-Star overall safety rating under the federal government's new, more stringent 2012 guidelines by accident.¹ Or get named a Top Safety Pick two years in a row by the Insurance Institute for Highway Safety because you offer more airbags than the other guy.² Safety is a mindset that starts with the car's core engineering. Sonata has a reinforced unibody constructed from high-tensile steel that effectively absorbs collision energy.

An array of modern safety technologies comes standard on Sonata. Six airbags stand poised to protect.³ A Traction Control System keeps your wheels from slipping under acceleration.⁴ Electronic Stability Control reduces understeer and oversteer for exceptional handling and cornering.⁵ Brake Assist and Electronic Brake-force Distribution are also onboard to help Sonata come to a swift, sure stop. It's all part of how Hyundai instills driving confidence.



A BODY THAT GUARDS

Rear crumple zones and reinforced side beams offer added layers of security, while an intelligent airbag system deploys and inflates front airbags in relation to driver and passenger weight and impact speed.



ANTI-LOCK BRAKING SYSTEM

A powerful four-channel ABS system applies brake force independently to each wheel. Additional Brake Assist technology provides maximum braking force during emergency stops.



ELECTRONIC STABILITY CONTROL

Handling is refined by Electronic Stability and Traction Control Systems that make thousands of calculations each second, adjusting brake and engine inputs as needed to ensure your vehicle remains on course. And you remain confidently in command.



ACTIVE FRONT HEAD RESTRAINTS

Designed to provide extra protection against whiplash in rear-end collisions, these restraints actually move up and forward to help brace against impact forces.



TOTAL COST OF OWNERSHIP AWARD WINNER FOR 2012: MID-SIZE CAR SEGMENT

Low insurance and maintenance costs, combined with fuel savings during the first five years of ownership, provide Sonata owners with distinct advantages – and Hyundai with another award for its trophy case. The Kelley Blue Book® annual Total Cost of Ownership Award honors vehicles with the lowest projected total cost of ownership during the initial 5-year ownership period.⁶ Designing Sonata to protect your pocketbook as well as your family has become a Hyundai hallmark.

¹ Government star ratings are part of the National Highway Traffic Safety Administration's New Car Assessment Program (www.safercar.gov). ² Based on Insurance Institute for Highway Safety 40-MPH frontal crash test, 31-MPH side-impact test, 20-MPH rear-impact test and availability of Electronic Stability Control. ³ The Supplemental Restraint System (SRS) is designed to work with the 3-point seatbelt system. The SRS deploys in certain frontal and/or side-impact conditions where significant injury is likely. The SRS is not a substitute for seatbelts, which should be worn at all times. Children under the age of 13 should be restrained securely in the rear seat. NEVER place a rear-facing child seat in the front seat of a vehicle that has a passenger-side airbag. ⁴ The Traction Control System is meant to enhance conscientious driving habits and is not a substitute for safe driving practices. ⁵ Electronic Stability Control (ESC) cannot control your vehicle's stability under all driving situations. ESC is not a substitute for safe driving practices. No system, no matter how advanced, can overcome physics or correct poor driving. The driver is always responsible for controlling the vehicle and must use caution to avoid loss of control in all driving conditions. Speed, road conditions and driver steering input will affect whether ESC can help prevent loss of control. See Owner's Manual for details. ⁶ Kelley Blue Book® is a registered trademark of Kelley Blue Book Co., Inc.

2.4 GDI GLS



KEY STANDARD FEATURES:

- 198 HP, 2.4L Gasoline Direct Injection DOHC 4-cylinder engine with Dual Continuously Variable Valve Timing
- 6-speed SHIFTRONIC® automatic transmission
- Active ECO System
- MacPherson strut (front) & multi-link (rear) suspension
- Remote keyless entry system with alarm
- Air conditioning with cabin air filtration
- Premium cloth seating surfaces
- 6-way adjustable driver seat
- Tilt-and-telescopic steering wheel with audio, Bluetooth® & cruise controls
- Power door locks & windows with driver auto-down/up
- Metalgrain interior accents
- AM/FM/SiriusXM®/CD/MP3 audio system with 6 speakers
- iPod®/USB & auxiliary input jacks
- Bluetooth® hands-free phone system with phonebook transfer & audio streaming
- Blue Link® telematics system
- Advanced trip computer with custom settings
- Electronic Stability Control with Traction Control System
- 4-wheel disc ABS with Brake Assist & Electronic Brake-force Distribution
- 6-airbag safety system with advanced dual front airbags & Occupant Classification System
- Active front head restraints
- Tire Pressure Monitoring System
- 16" aluminum alloy wheels
- Daytime Running Lights
- Bodycolor front grille & chrome window beltline moldings

POPULAR EQUIPMENT PACKAGE

GLS Equipment plus:

- + Heated front seats
- + Power driver's seat with lumbar support
- + Chrome interior door handles
- + Leatherette door panel inserts
- + Front fog lights
- + Automatic headlights

2.4 GDI AND 2.0T SE



GLS POPULAR EQUIPMENT PACKAGE PLUS:

- + 200 HP, 2.4L Gasoline Direct Injection DOHC 4-cylinder engine or 274 HP, 2.0L Gasoline Direct Injection DOHC 4-cylinder engine with twin-scroll turbocharger
- + 6-speed SHIFTRONIC® automatic transmission with steering-wheel-mounted paddle shifters
- + Sport-tuned suspension & steering
- + Proximity keyless entry with push-button start
- + Dual-zone automatic temperature control (2.0T only)
- + Leather bolster with cloth insert sport seats
- + Leather-wrapped steering wheel & shift knob
- + Dark chrome front grille
- + Dual exhaust system with chrome tips
- + Chrome accent exterior door handles
- + 18" Hyper Silver alloy wheels

NAVIGATION & SUNROOF PACKAGE

- + Power tilt-and-slide sunroof
- + Navigation system with 7" touchscreen & voice commands
- + Rearview backup camera
- + 360-Watt Dimension® AM/FM/SiriusXM®/CD/MP3 audio system with 6 speakers & subwoofer
- + HD Radio® Technology with multicasting

2.4 GDI AND 2.0T LIMITED



SE EQUIPMENT PLUS:

- + Power tilt-and-slide sunroof
- + Leather seating surfaces
- + Heated rear seats
- + Dual-zone automatic temperature control
- + Steering-wheel-mounted paddle shifters (2.0T only)
- + Premium door sill scuff plates
- + 360-Watt Dimension® AM/FM/SiriusXM®/CD/MP3 audio system with 6 speakers & subwoofer
- + HD Radio® Technology with multicasting
- + Rear console-mounted vents
- + Piano Black or Woodgrain interior accents
- + Auto dimming rearview mirror with compass and HomeLink®
- + Chrome-tipped dual exhaust (2.0T only)
- + Side mirror-mounted turn signal indicators
- + 17" aluminum alloy wheels (18" on 2.0T only)
- Deletes sport-tuned suspension and steering

PREMIUM PACKAGE

- + Panoramic tilt-and-slide sunroof
- + 7" touchscreen navigation system with voice commands & rearview camera
- + 400-Watt Infinity® AM/FM/SiriusXM®/CD/MP3 audio system with 8 speakers & subwoofer

2013 SONATA 2.4 GDI & 2.0T EXTERIOR/INTERIOR COLORS & WHEELS



RADIANT SILVER



MIDNIGHT BLACK



HARBOR GRAY METALLIC



PACIFIC BLUE PEARL



SHIMMERING WHITE



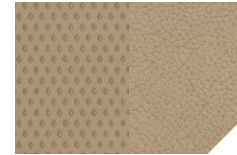
SPARKLING RUBY



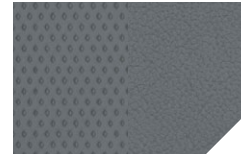
INDIGO NIGHT



IRIDESCENT SILVER BLUE PEARL



CAMEL LEATHER



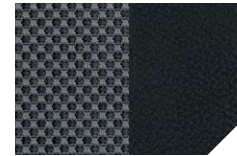
GRAY LEATHER



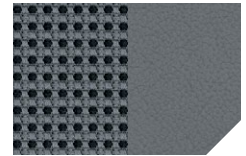
WINE LEATHER



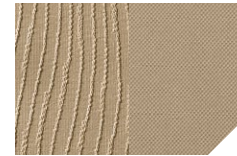
BLACK LEATHER



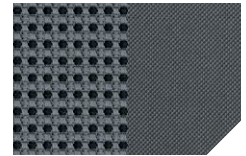
BLACK LEATHER + CLOTH



GRAY LEATHER + CLOTH



CAMEL CLOTH



GRAY CLOTH



16" ALUMINUM ALLOY WHEEL

18" HYPER SILVER ALLOY WHEEL

17" ALUMINUM ALLOY WHEEL

AMERICA'S BEST WARRANTY

POWERTRAIN LIMITED WARRANTY
10 YEARS
100,000 MILES

NEW VEHICLE LIMITED WARRANTY
5 YEARS
60,000 MILES

ANTI-PERFORATION WARRANTY
7 YEARS
UNLIMITED MILES

24-HOUR ROADSIDE ASSISTANCE
5 YEARS
UNLIMITED MILES

See dealer for LIMITED WARRANTY details



HYBRID



KEY STANDARD FEATURES:

- 2.4L Atkinson Cycle 4-cylinder Hybrid engine with electric motor
- Permanent magnet high-power density motor
- Lithium polymer battery system
- Hybrid Starter Generator
- 6-speed SHIFTRONIC® automatic transmission
- Proximity keyless entry with push-button start
- Dual-zone automatic temperature control
- Electroluminescent instrument cluster with color display
- Premium cloth seats
- Heated front seats
- Rear console-mounted vents
- Steering wheel audio, Bluetooth® & cruise controls
- Blue Link® telematics system
- AM/FM/SiriusXM®/CD/MP3 audio system with 6 speakers
- Advanced LCD trip computer with custom settings
- Chrome interior door handles & leatherette door panel inserts
- Electronic Stability Control with Traction Control System
- 4-wheel disc ABS with Brake Assist & Electronic Brake-force Distribution
- 6-airbag safety system with advanced dual front airbags & Occupant Classification System
- Active front head restraints
- LED headlight accents & taillights
- Automatic headlights & front fog lights
- Side mirror turn signal indicators
- Chrome window beltline moldings
- 16" Eco-spoke aluminum alloy wheels

HYBRID LIMITED



HYBRID EQUIPMENT PLUS:

- + Panoramic tilt-and-slide sunroof
- + Leather seating surfaces
- + Heated front & rear seats
- + Leather-wrapped steering wheel & shift knob
- + Power driver's seat with lumbar support
- + 7" touchscreen navigation system with voice commands
- + Rearview backup camera
- + 400-Watt Infinity® AM/FM/SiriusXM®/CD/MP3 premium audio system with 8 speakers, external amp & subwoofer
- + HD Radio® Technology with multicasting
- + Auto dimming rearview mirror with compass & HomeLink®
- + Premium door sill scuff plates
- + Glossy black door surround and outside mirror accents
- + 17" Eco-spoke aluminum alloy wheels



In 2010, Hyundai announced plans to achieve its fuel economy leadership and obtain a corporate average fuel economy (CAFE) rating of at least 50 MPG by 2025 for its lineup of passenger cars and light duty trucks. Through May 2012, Hyundai's Blue Drive products and technologies are achieving an EPA-estimated 37.3 MPG highway rating across our fleet, keeping us well ahead of government guidelines.

EXTERIOR DIMENSIONS

	2.4 GDI & 2.0T	HYBRID
Wheelbase (in)	110.0	110.0
Overall Length (in)	189.8	189.8
Overall Width (in), excluding mirrors	72.2	72.2
Overall Height (in)	57.9	57.7
Tread Width (in), front/rear 16" wheels	62.9/62.9	62.9/62.9
Tread Width (in), front/rear 17" wheels	62.6/62.6	62.6/62.6
Tread Width (in), front/rear 18" wheels	62.5/62.5	-
Coefficient of Drag (Cd)	0.28	0.25
Base Curb Weight (lbs)	3,199-3,316 (GDI) 3,338-3,452 (2.0T)	TBD*

INTERIOR DIMENSIONS

	2.4 GDI & 2.0T	HYBRID
Head Room (in), front/rear	40.0/37.8	40.0/37.8
Head Room (in), w/sunroof	38.1/37.6	-
Head Room (in), w/panoramic sunroof	38.2/37.2	38.2/37.2
Leg Room (in), front/rear	45.5/34.6	45.5/34.6
Shoulder Room (in), front/rear	57.9/56.7	57.9/56.7
Hip Room (in), front/rear	55.2/54.9	55.2/54.9
Passenger Volume (cu ft)	103.8	103.8
Cargo Volume (cu ft)	16.4	TBD*
Total Interior Volume (cu ft)	120.2	TBD*

EPA MILEAGE ESTIMATES

	2.4 GDI
Automatic Transmission (city/highway/combined)	24/35/28
Fuel Tank Capacity (gal)	18.5
	2.0T
Automatic Transmission (city/highway/combined)	22/34/26
Fuel Tank Capacity (gal)	18.5
	HYBRID
Automatic Transmission (city/highway/combined)	TBD*
Fuel Tank Capacity (gal)	17.2

2013 SONATA HYBRID EXTERIOR/INTERIOR COLORS & WHEELS



SILVER FROST METALLIC



HYPER SILVER METALLIC



PORCELAIN WHITE PEARL



BLACK ONYX PEARL



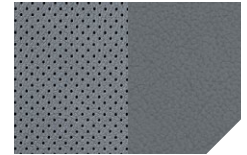
VENETIAN RED PEARL



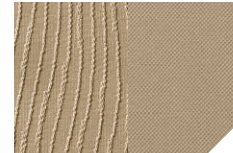
BLUE SKY METALLIC



CAMEL LEATHER



GRAY LEATHER



CAMEL CLOTH



GRAY CLOTH



16" ALUMINUM ALLOY WHEEL



17" ALUMINUM ALLOY WHEEL



HYUNDAI
Assurance

For over a decade, Hyundai has backed every car we've built with America's Best Warranty and this simple promise: Relax. We've got your back for the next 10 years or 100,000 miles. It's a commitment to customers that's evolved into Hyundai Assurance, an umbrella of services that includes 24/7 Roadside Assistance and more. Visit www.hyundaiaassurance.com for details.

Fuel economy estimated by EPA for comparison only. Mileage may vary. While the information contained in this brochure was correct at the time of printing, specifications and equipment can change. Feature comparisons based on competitor information available at the time of printing. No warranty or guarantee is being extended in this brochure, and Hyundai reserves the right to change product specifications and equipment at any time without incurring obligations. Some vehicles are shown with optional equipment. Specifications apply to U.S. vehicles only. Please contact your Hyundai dealer for current vehicle specifications. As part of Hyundai's commitment to a responsible environment, this brochure is printed using paper certified by the Forest Stewardship Council.™ FSC® certification helps ensure that the highest social and environmental standards are met in the making of the paper we use, contributing to conservation, responsible management, and community-level benefits for people near the forests.



 **HYUNDAI** | NEW THINKING.
NEW POSSIBILITIES.

HYUNDAI HOPE ON WHEELS

Hyundai dealers are helping preserve human life. Our Hope on Wheels program ensures a portion of the proceeds from every vehicle we sell is donated to help fund pediatric cancer research (over \$57 million in funding by the end of 2012). To learn more and help us find a cure, please visit HyundaiHopeOnWheels.com.



Hyundai Hope On Wheels™
Helping kids fight cancer

EXPLORE HYUNDAI.COM | Be sure to visit our website, where you can build your own Sonata, locate a Hyundai dealer near you, and best of all - schedule a test drive.

CONNECT WITH HYUNDAIUSA.COM/SOCIAL



©2012 HYUNDAI NP020F2013