



## First Place at the Show for the Fourth Consecutive Year

For the fourth consecutive year Buick has been awarded first choice of space at the National Automobile Show. This honor is conferred each year by the automobile manufacturers who are members of the National Automobile Chamber of Commerce, upon the member having done the greatest volume of business during the previous year. The figures on which this 1922 award was made proved Buick to be the largest builder of six-cylinder cars in the world.

That Buick has retained this position year after year reflects convincingly the high regard in which Buick is held by the American public. Such regard is a logical outgrowth of Buick policy which has been rigidly maintained for twenty years—that every car which leaves the Buick factory must first, last and all the time give that thoroughly dependable and trustworthy service which will make every Buick owner a Buick enthusiast. It is a policy which places the Buick dealer in every locality in a position to be envied.

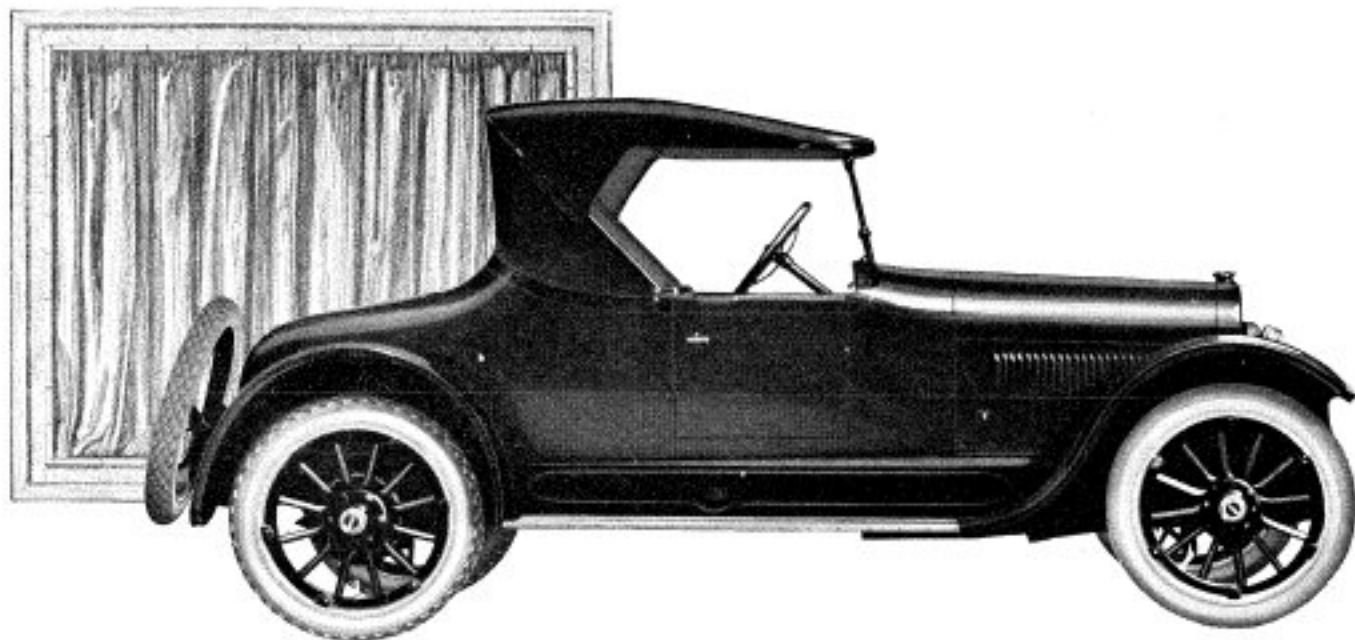
*Eleven Buick Models, Comprising the Most Complete Line of Cars in America, Offer an Exceptional Dealer Opportunity.*

**BUICK MOTOR COMPANY, FLINT, MICHIGAN**

*Division of General Motors Corporation*

*Pioneer Builders of Valve-in-Head Motor Cars*

*Branches in all Principal Cities—Dealers Everywhere*



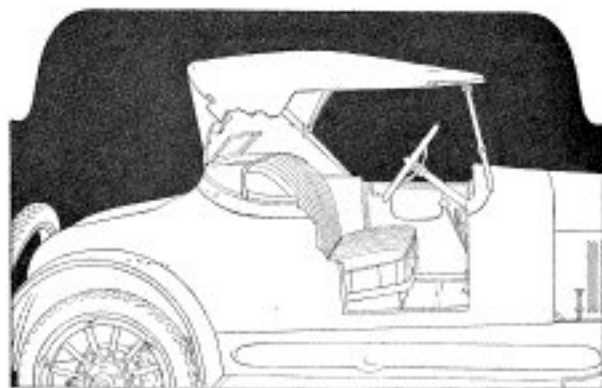
**22-Six-44**  
*Three Passenger Roadster*

**T**HE Buick Three Passenger Roadster (22-44) provides the usual advantages of roadster construction with many added refinements which increase immeasurably its convenience of driving and the enjoyment of its service.

Ample room has been arranged for the comfortable seating of three adults without crowding or cramping the driver. Large compartments—one back of the seat and the other beneath the rear deck—afford easy access for the storage of personal effects or luggage. The doors of this roadster are of unusual width being equipped with rain curtains which open with the doors.

Equally pleasing, too, are the many other carefully worked out details of its equipment such as the arrangement of the controls and dash instruments, the deep, leather upholstered seat and the design of the trimly tailored top.

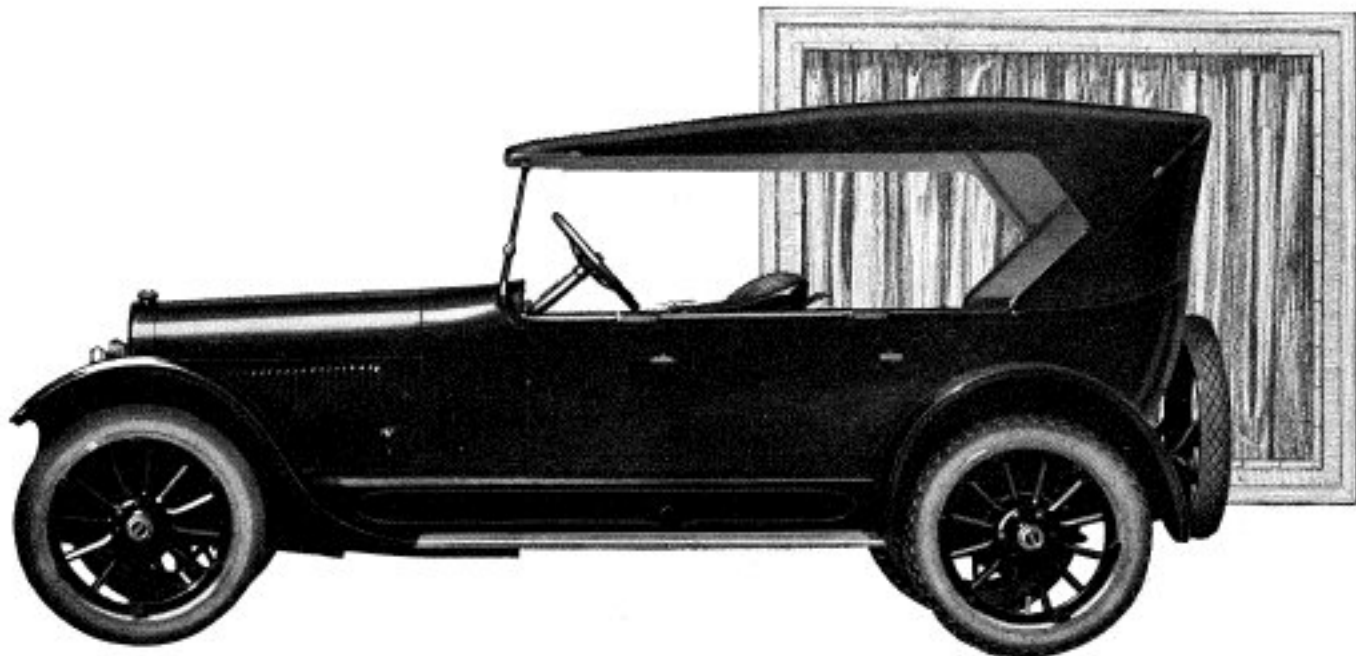
The capable appearance of this model does in no way belie the performance that can be expected of it. It is powered with the famous Buick Valve-in-Head Motor which insures the power and stamina for the hardest character of service.



Large doors, equipped with special outside handles, latches and bumpers, contribute to this model's convenience. It has ever been the Buick policy to develop rather than deviate from the tried basic principles upon which Buick cars are built; and in the quality of the Twenty-Two Series the wisdom of this policy is well evinced.



**When better automobiles are**



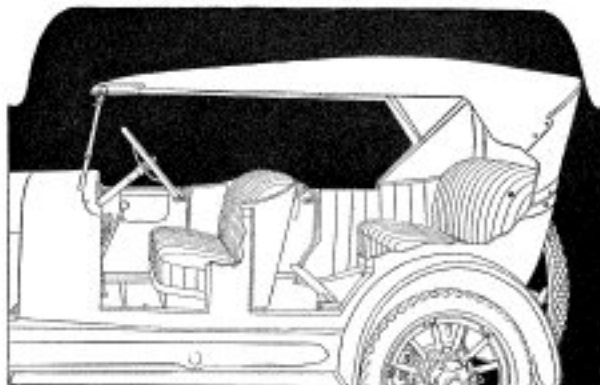
**22-Six-45**  
**Five Passenger Touring**

**T**HE widespread popularity which the Buick Five Passenger Open Model has attained is a gratifying endorsement of those Buick policies which for twenty years have been directed solely to the development of quality cars. That it merits this confidence is attested by the service and satisfaction which it is providing owners in every section of the country.

Each feature of its construction suggests the care and thought given to anticipate the needs of those who desire an open car for all-around service.

Suitable roominess has been preserved in the tonneau where there is a full width three-passenger seat, the contour of which is such that complete support is given the back—an advantage particularly conducive to travel comfort, especially during long trips. Snug-fitting curtains that swing with the doors facilitate entrance in cold or inclement weather.

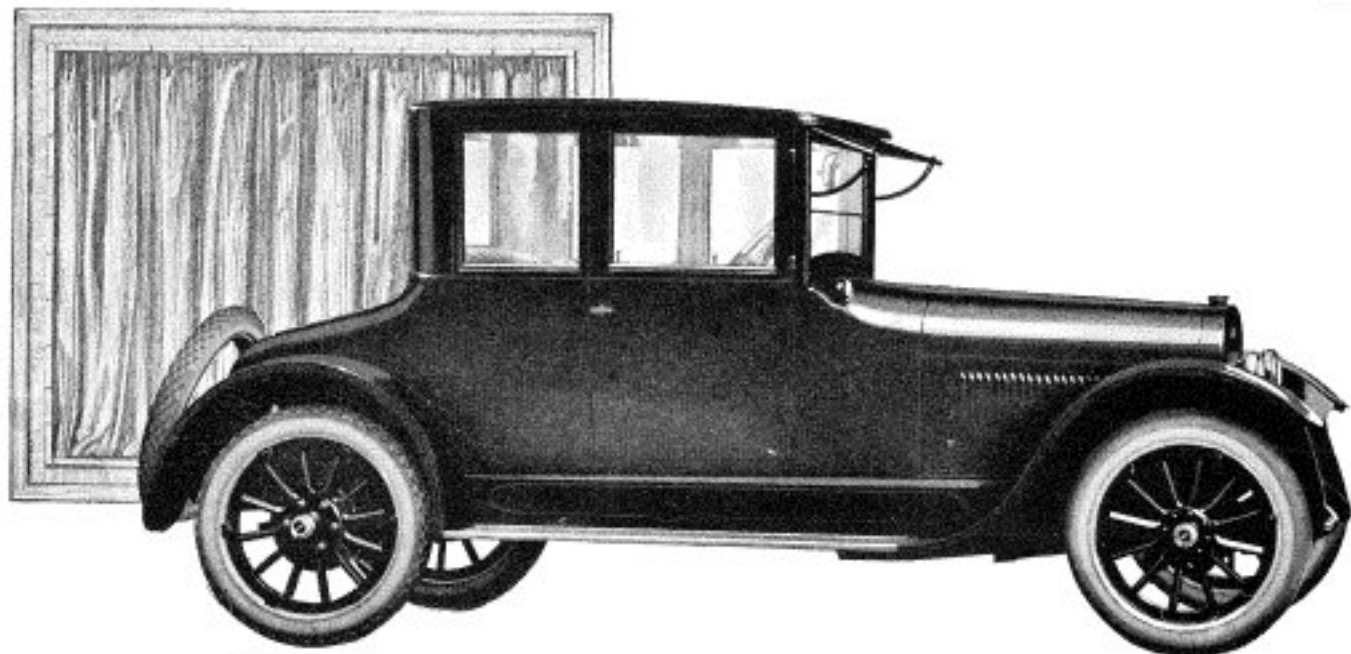
Competing from a point of acceptability with its graceful body lines, is the excellency of its mechanism which can be counted upon to withstand the stress and strain of most vigorous service and function efficiently day in and day out over a long period of years.



The headlamps with which this car is equipped were designed to harmonize with the graceful, sweeping body lines adding an enhancing touch of distinction to the completed car. All openings between body and fenders are joined to prevent the rear wheels splashing the body. These details evince clearly that even in the little things the same conscientious attention has been given to anticipate the buyer's idea of a car complete in every way.

**built, Buick will build them**





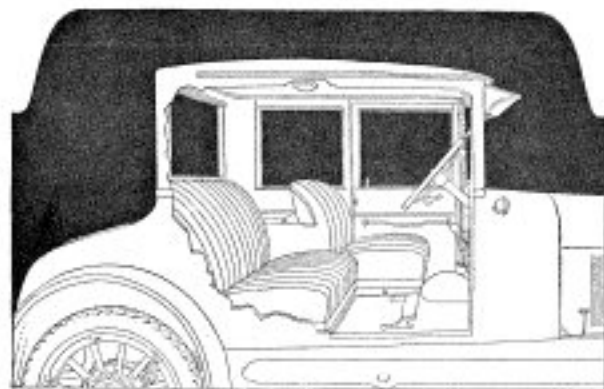
*22-Six-46  
Three Passenger Coupe*

**T**HE Buick Three Passenger Coupe (22-46) combines all those most desirable elements of closed car construction which make for greater utility and comfort with mechanical dependability of the highest order. It is a most serviceable car for continuous service in all seasons.

The interior is draft proof and weather proof and is trimmed and upholstered in a beautiful shade of automobile cloth. The driver's seat is set well forward adding to the ease of operation especially in close traffic. Behind the driver's seat is a cleverly concealed compartment which will accommodate a number of parcels and other traveling requisites. An auxiliary seat, which when not in use, swings out of the way under the cowl, providing for a fourth passenger.

Adjustable side windows, dome light, ventilating windshield and silk shade for the rear window, windshield visor and windshield cleaner are included in the appointments. The doors have pull-to handles and can be locked from the inside with the exception of the right hand front door, which may be locked from the outside.

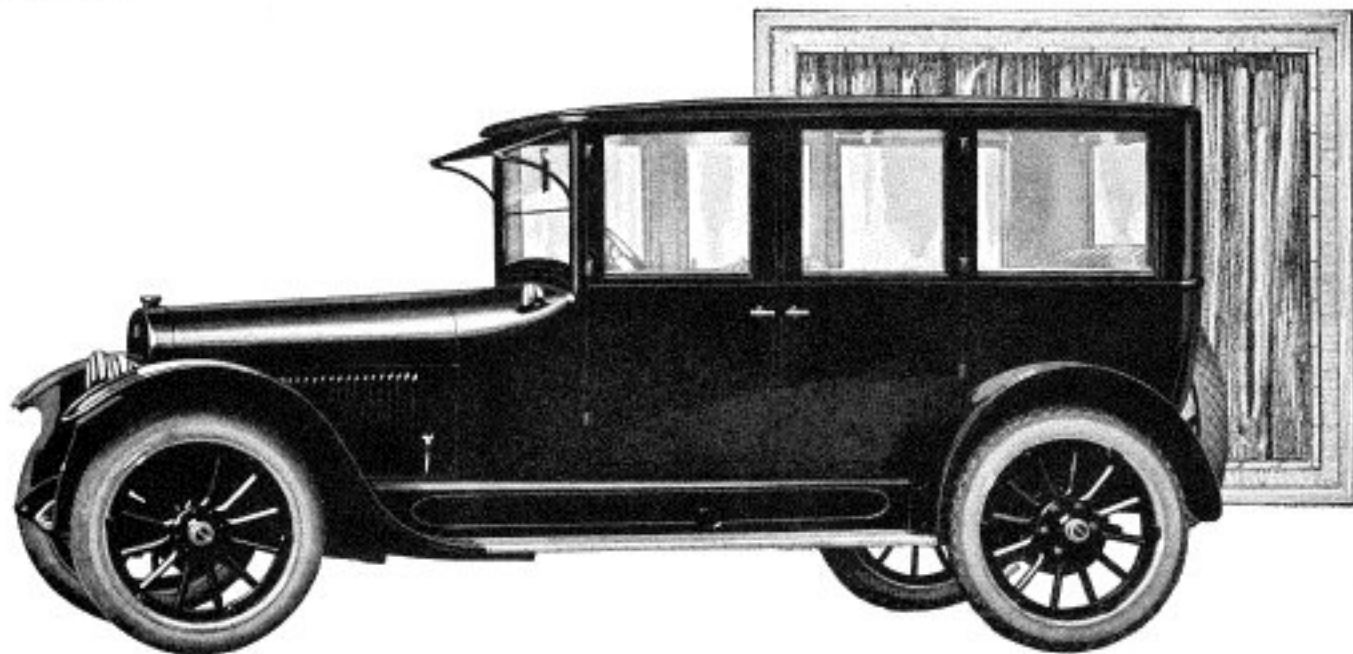
It would be difficult to design a car that would be capable of covering a wider range of motor use and for this reason it has proved to be extremely favored in cases where one car must serve a variety of purposes.



This model is as easy to care for, its working parts are as conveniently accessible and adjustable, as it is reliable and simple to drive. Clutch adjustments are easily made directly beneath the floor board. Water can be drained from the radiator and oil from the crankshaft, by simply turning handles inside the hood. A small door in the floor board makes batteries readily accessible.



When better automobiles are



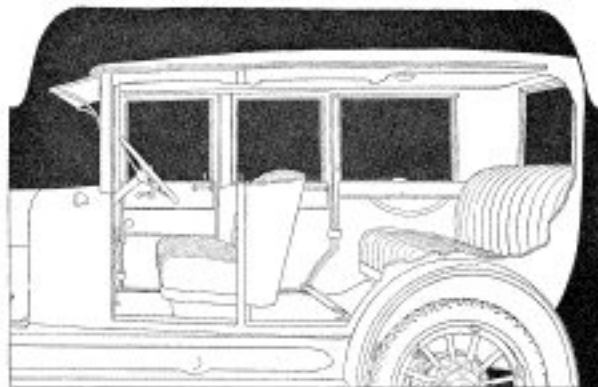
*22-Six-47  
Five Passenger Sedan*

TO those who desire a closed car with additional seating capacity than is afforded by the coupe type, this six-cylinder Five Passenger Sedan will particularly appeal. It is completely appointed with every refinement that good taste and convenience dictates.

The oversize front seat extends across the body being placed in an easy riding position and giving the driving compartment a remarkably free and roomy space. This same consideration for comfort is emphasized throughout the interior which is tastily finished with carpet, shades and trimmings to match. Four wide doors equipped with double concealed safety latches give easy access.

The beauty and distinction of this model is in no way excelled in the character of its performance, which lives up to Buick traditions and reputation for economical and enduring service.

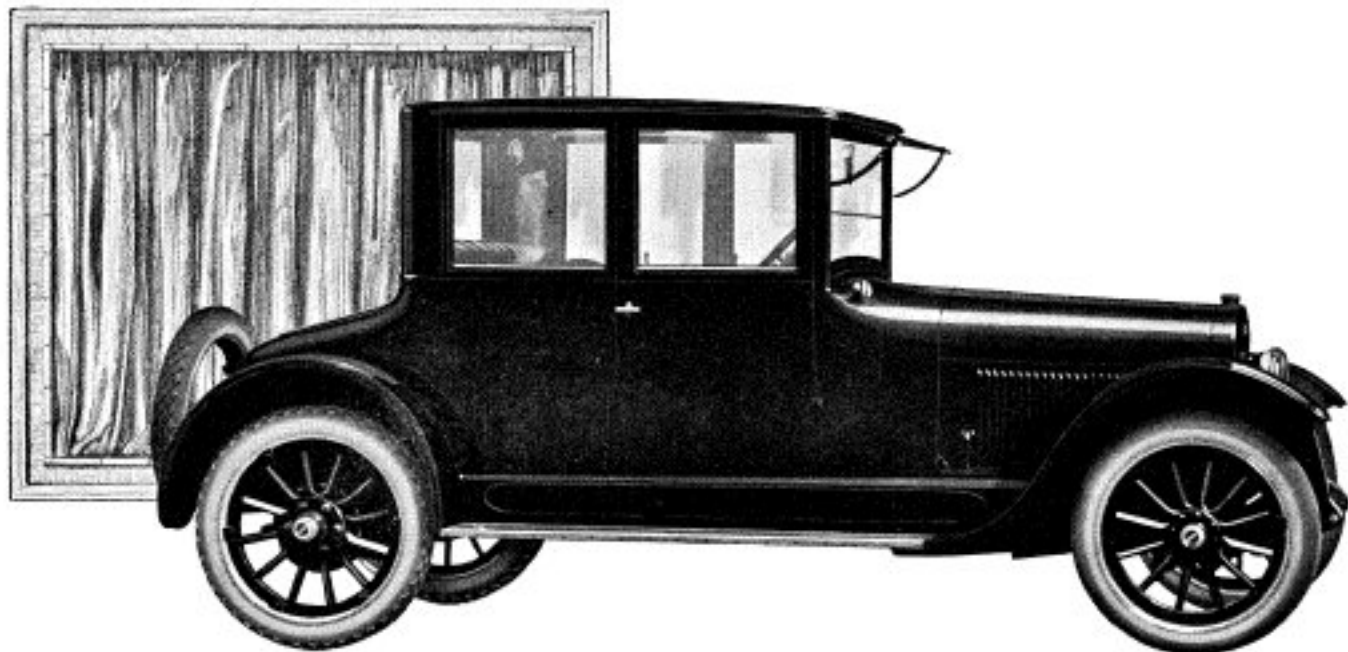
To the buyer of a fine car, Buick manufacturing facilities and production methods are of great importance. For they guarantee that the mechanical units, designed with proper relation to one another, are manufactured just as the Buick Motor Company would have them. For this reason, the buyer profits by the unusual quality thereby built in Buick cars and the low manufacturing costs that consequently result.



Another example of Buick thoroughness is found in the rear axle used in this model and all other Buick cars. The full weight of the car is carried by the axle housing rather than on the axle driving shafts. This relieves the propelling mechanism from all save driving strains.

**built, Buick will build them**



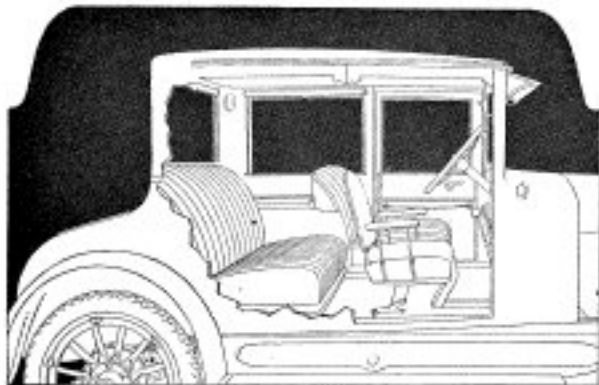


**22-Six-48**  
**Four Passenger Coupe**

**C**HARACTERIZED by that subtle touch of elegance so closely associated with custom built models, the Buick large Four Passenger Coupe (22-48) particularly appeals to the discriminating buyer who is seeking more than the usual in closed car design.

This model is mounted on the same chassis as the large seven passenger Sedan and this additional wheelbase contributes much to its easy riding qualities and the convenience of its commodious interior. The seating arrangement has been worked out carefully to afford the utmost in comfort. Beside the driver's seat, which is of individual Pullman construction, is a thickly upholstered seat of arm chair design, equipped with a back rest. When not in use this seat folds away out of sight beneath the cowl. The roomy rear seat has ample capacity for two adults. As in all other Buick closed models generous compartment space has been reserved both directly back of the driver's seat and in the rear deck.

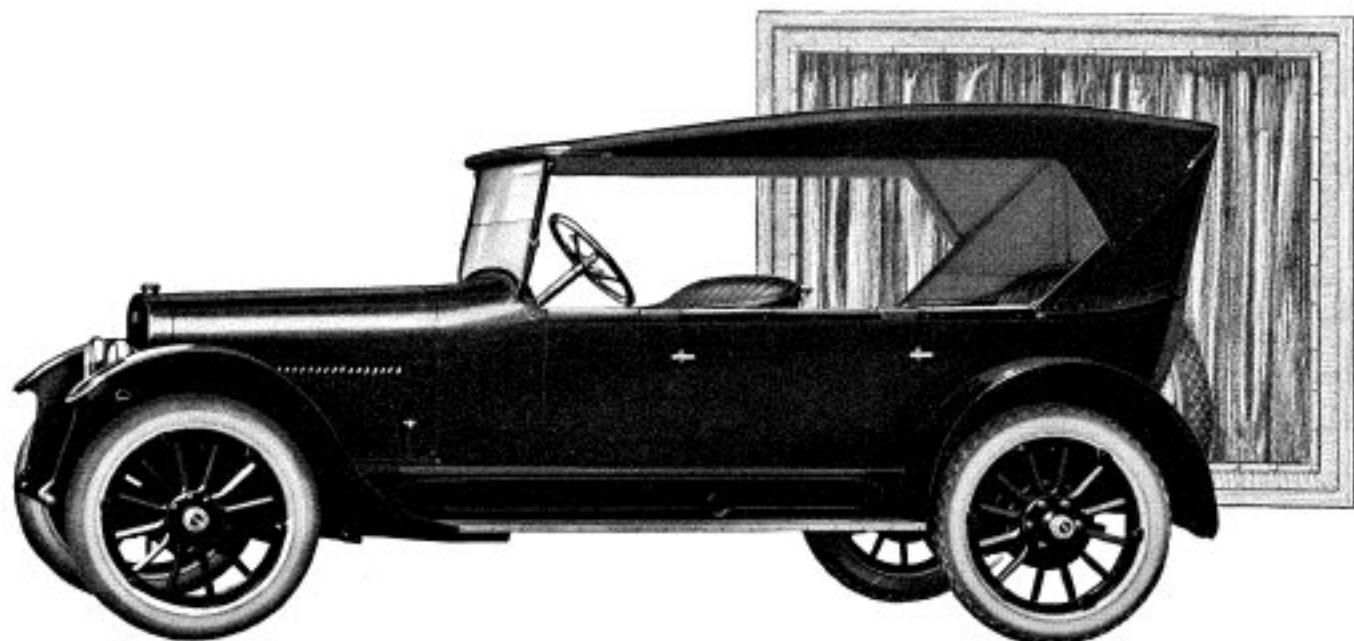
From every standpoint this luxurious model reflects the ingenuity and skill of advanced craftsmanship which distinguishes Buick production. And like all other Buick cars it can be depended upon for faithful and uninterrupted service under the most exacting conditions to which a motor car can be subjected.



The heavy rotating parts of the clutch in this and every Buick car are carried by the fly wheel and only the very light parts are carried by the transmission, which prevents the clashing of gears in changing from one speed to another. The special design of the clutch surfaces makes it extremely positive, yet gentle in engagement.



When better automobiles are



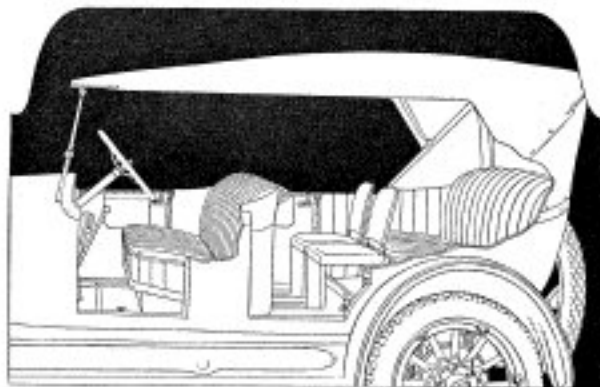
*22-Six-49  
Seven Passenger Touring*

**T**HE Buick Seven Passenger Touring is built on a longer chassis which makes possible the generous proportions of the driving compartment and tonneau as well as exceptional riding comfort. It is an ideal car for either city or country use, with unlimited touring ability.

Entrance to both the front and rear seats is made through wide door openings. The upholstery throughout is in hand-buffed leather and supported by patented cushion springs made of tempered steel.

Built into the back of the front seat are two comfortable folding chairs which when opened up for use, do not in any way crowd the occupants of the rear seats. The windshield, as on all open models, is sufficiently wide to protect those riding in the front seat from dust and wind. The top is tailored of substantial and heavy material and will retain its smart appearance long after the car has ceased to be new. All-weather protection is afforded the occupants by closely fitting side curtains that open and shut with the doors.

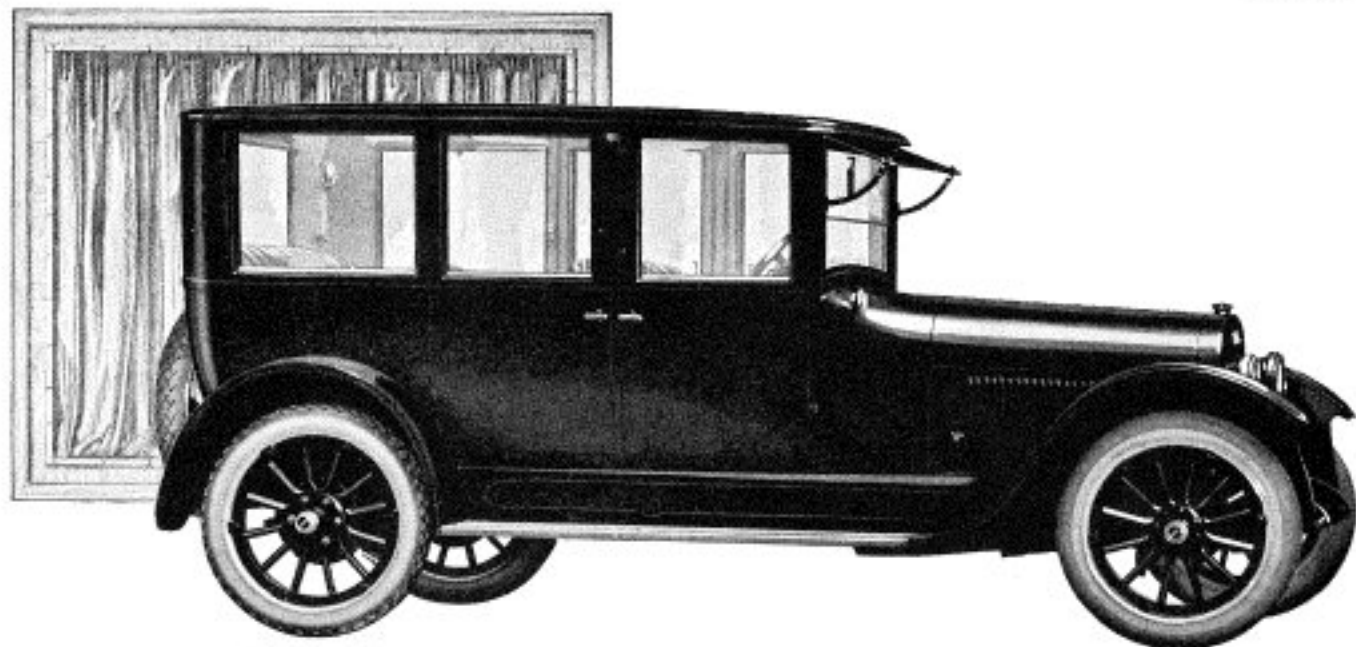
Possessing a degree of serviceability which makes for most economical transportation together with all those most acceptable attributes of distinction and beauty, this model has created a new standard in motor car value.



Throughout the six cylinder series smooth riding is made possible over all manner of roads by correct design of both the front and rear springs. This car as well as all the closed models is equipped in addition with snubbers in front.

built, Buick will build them





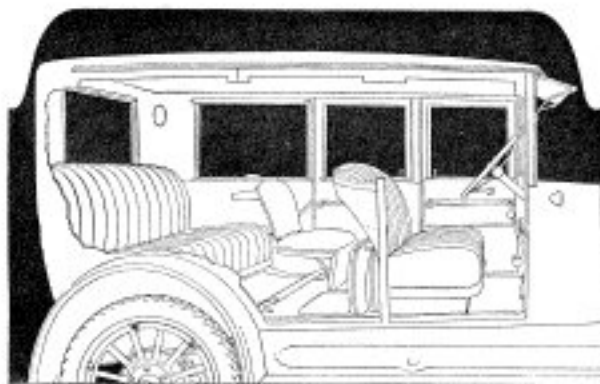
*22-Six-50  
Seven Passenger Sedan*

**T**HE Buick Seven Passenger Sedan carries a special appeal to those critical motorists who seek more than usual luxury and room in a year-'round car.

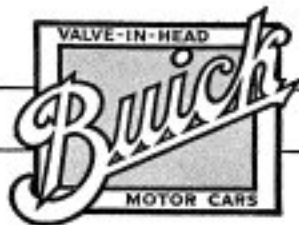
In this model, exterior appearance is in complete harmony with interior appointments, which have been carried out in perfect good taste and to insure the highest degree of comfort.

Ventilation is controlled by adjustable windshield and windows while an anti-glare sun shade increases the safety and comfort of driving. Two corner lights flood the interior with a soft glow. The doors equipped with concealed stop hinges and double-safety latches are of ample size, affording easy entrance to either compartment.

Improved arm rests for the rear seat and heavily upholstered cushions combined with the long wheelbase assure solid comfort. The excellence of the Buick chassis, the ease of control, both gear shift and steering, along with the delightful refinements and conveniences account for the high favor with which this dependable model is held.

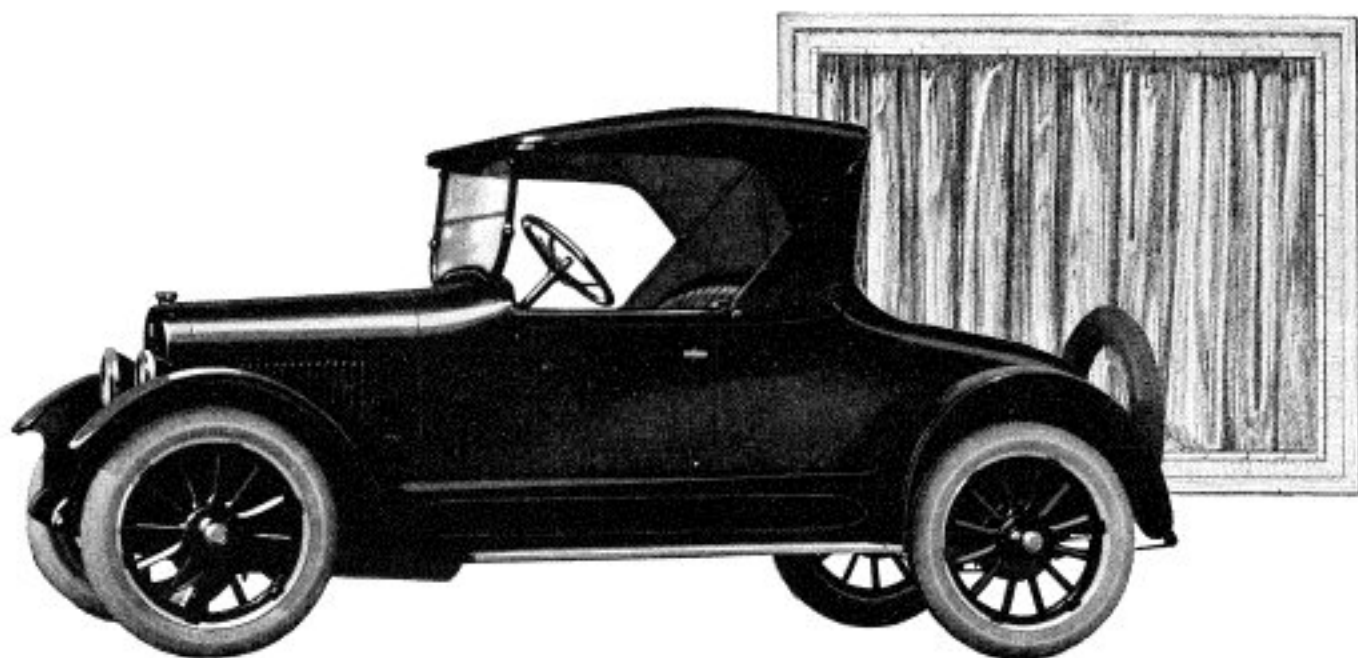


The development of Buick body building methods has been very similar to the development of the Buick Valve-in-Head Motor and chassis. In both, constructive advancement has been made by the processes of constant improvement.



When better automobiles are





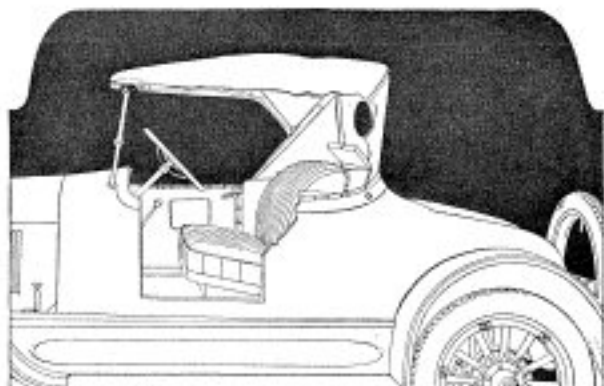
*22-Four-34  
Two Passenger Roadster*

**L**IGHT, rugged, attractive and economical the new Four Cylinder Buick Roadster is adapted especially to the needs of the business and small family man. While this model is intended for a two-passenger roadster, the seat is extra wide and accommodates three comfortably.

Into the construction of this car has been incorporated, with the characteristic Buick policy of thoroughness, everything which could in any way promote greater comfort or serviceability.

Among these details which mean so much to those who must use their cars daily, regardless of the weather, is an inclined windshield affording clear vision. This feature together with the tailored side curtains that open and close with the doors, provide comfort and protection nearly equal to that of a closed car.

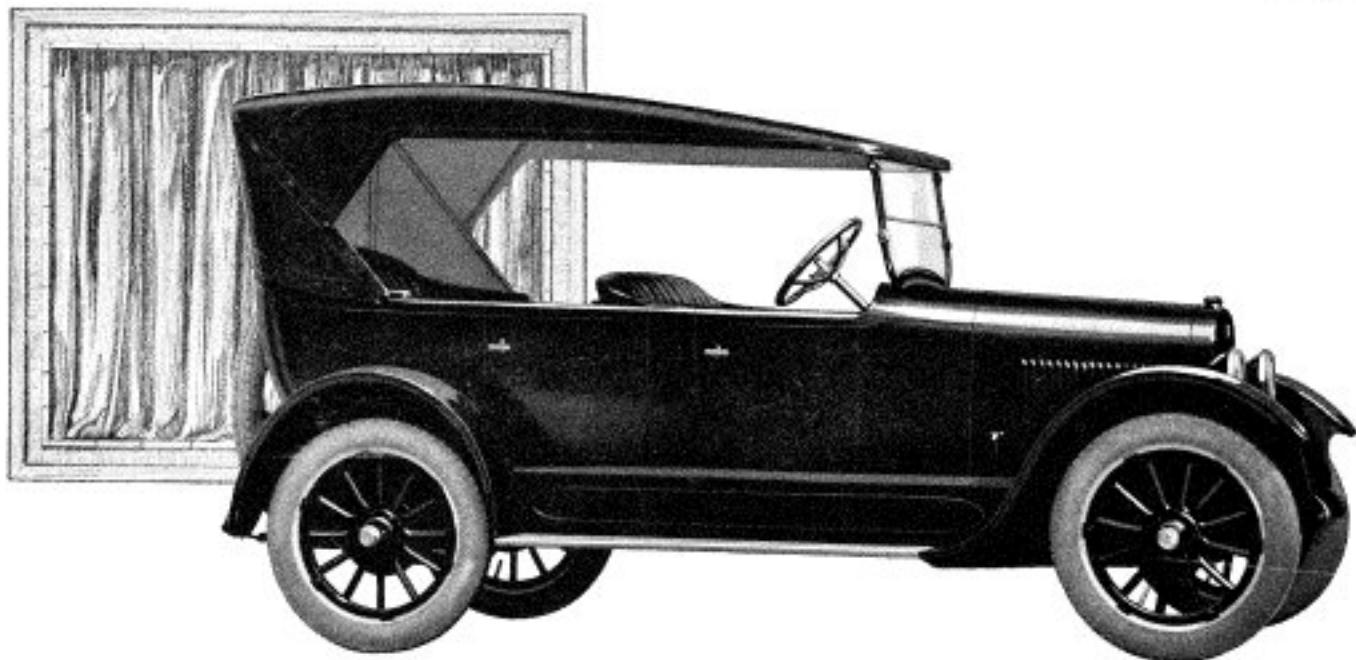
In the design of both the Buick Six and Four Cylinder cars the one idea which has dominated constantly has been that regardless of the type, size or price of the car, it must be thoroughly right mechanically to give perfect satisfaction. In mechanical excellence the new four cylinder cars are the equal in every way of the Sixes, and in appearance they possess the same graceful lines and refinements.



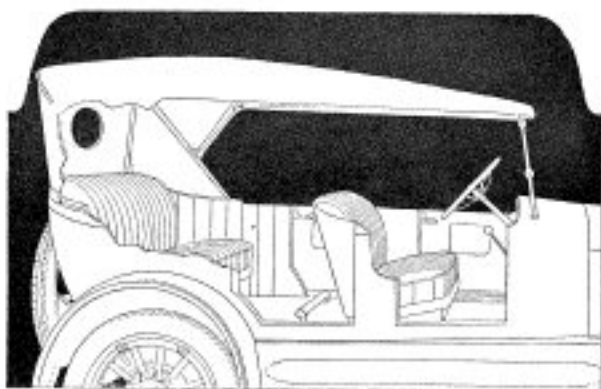
This new Four Cylinder Buick is built to render the same good, reliable performance which has distinguished Buick cars for twenty years. It furnishes new proof of the competence of Buick engineering ideals.

**built, Buick will build them**





*22-Four-35  
Five Passenger Touring*



The unusual value built into the present Buick models cannot be attributed to engineering efficiency alone. While mechanical excellence has been arrived at through twenty years' unwavering fidelity to definite engineering principles, Buick manufacturing facilities have made possible the fulfillment of the highest of engineering ideals.

DESIGNED along the same graceful lines as the Six Cylinder open models, the Buick Four Cylinder Five Passenger Touring Car combines a remarkable measure of serviceability, simplicity and ease of operation.

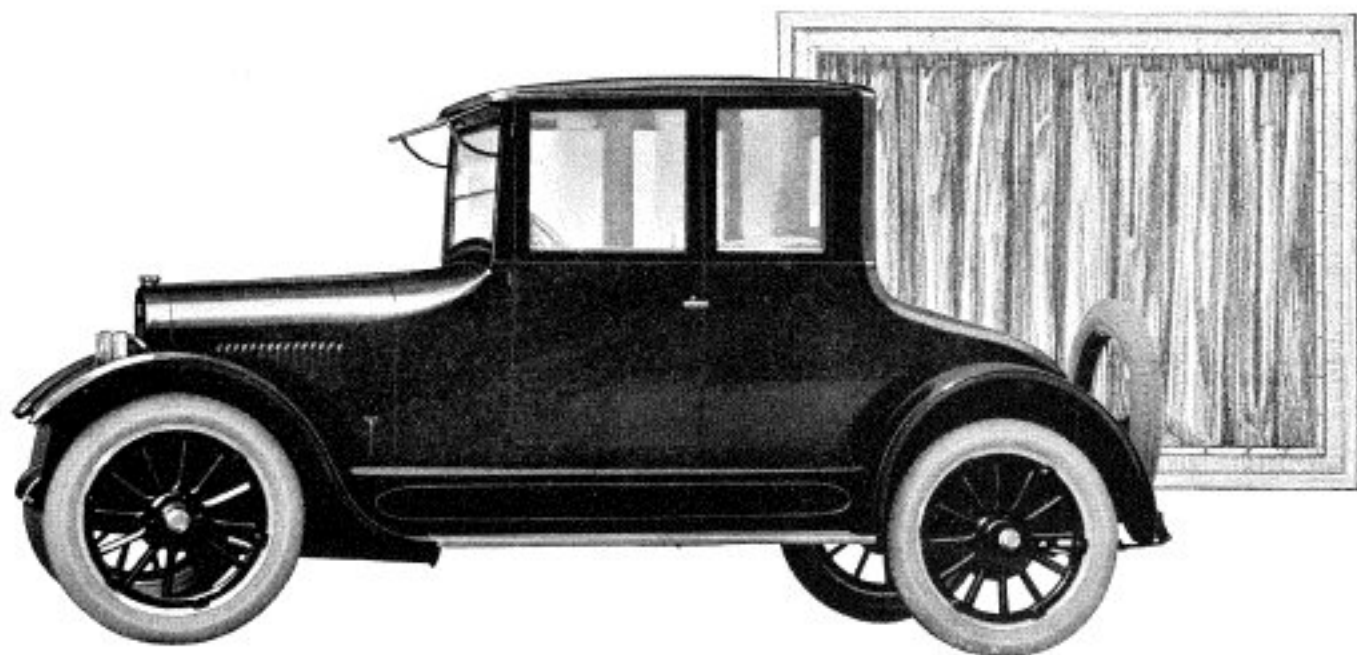
While it is moderately priced, it is full powered and well balanced—a product of inherent goodness which has grown out of two decades in developing Buick cars.

The same proportions of generous space which increased so materially the comfort of the larger Buick models is found in the roomy-driving compartment and tonneau of this car. The seats too, are wide and comfortable being upholstered in leather and heavily cushioned. Each of the four doors is equipped with deep side pockets.

As with the roadster built on this same chassis, this car is equipped with a top of special Buick design and built of excellent material. Curtains which are snug fitting and open with the doors, are likewise a part of the regular equipment.



When better automobiles are



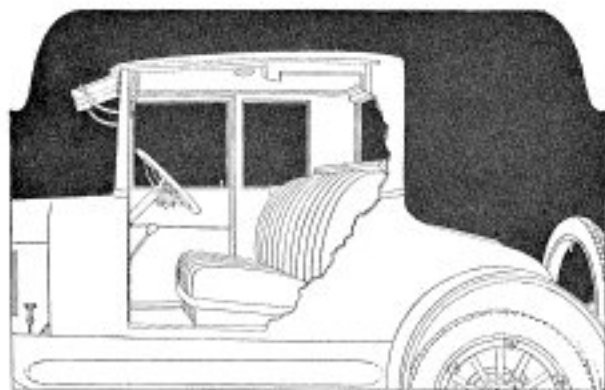
*22-Four-36  
Three Passenger Coupe*

**B**EAUTY, utility and comfort have been ideally combined in the new Buick Four Cylinder Three Passenger Coupe (22-36). And as it is equipped with the Buick valve-in-head motor, the limitations of its service are only confined to the inclination of the owner.

There is a deep, wide seat in this new coupe with ample room for three passengers, directly back of which and opening from the top is a large compartment which supplements the carrying space provided in the rear deck. The windows are adjustable to any desired height while the rear window which is permanent has a roll-up silk curtain.

This model as well as the Four Cylinder Sedan, is equipped with adjustable windshield visor, windshield cleaner, dome light, and two-piece ventilating windshield. The doors on both models have pull handles and concealed locks.

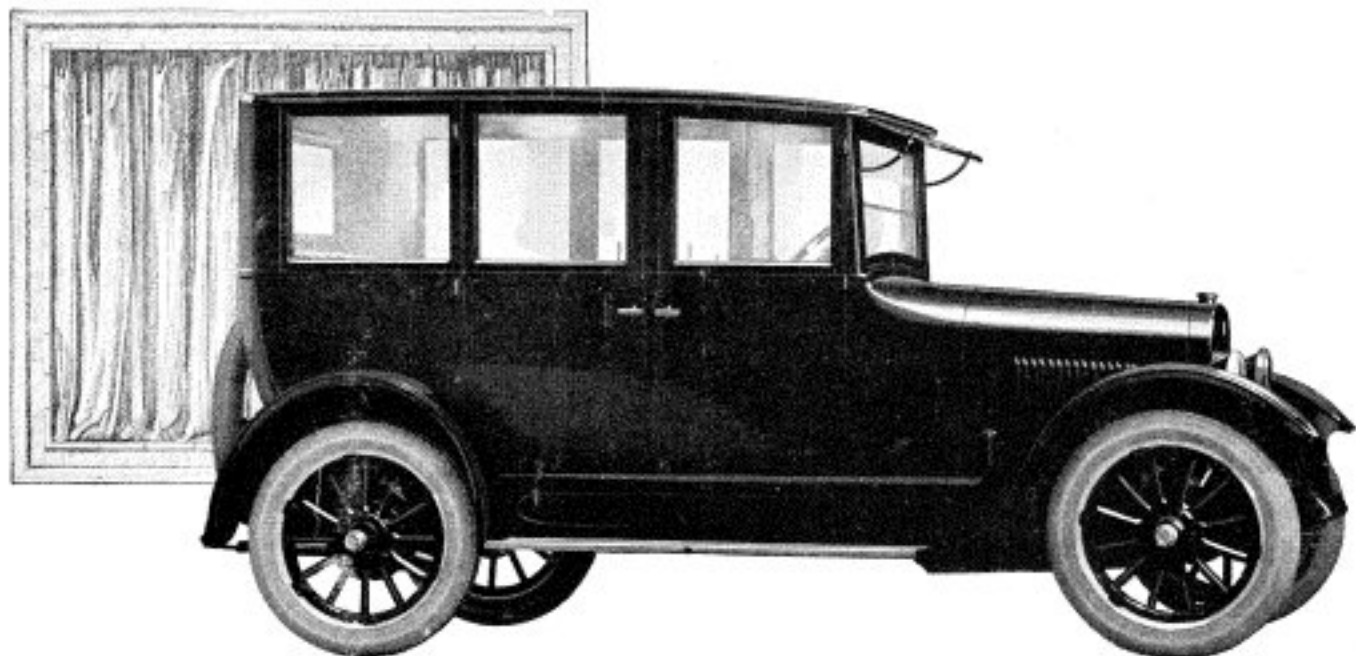
Among the new mechanical features of both four and six cylinder models is a new carburetor and heat control which thoroughly vaporizes the common low test gasoline effecting material fuel economy and reducing crankcase oil dilution to a minimum. A circulating splash system with special designed oil pump insures thorough and continuous lubrication through every working part.



Because of the wide range of Buick body types to choose from, the buyer is enabled to select just the model best suited to his family or business needs. And regardless of his selection he receives a car perfectly developed, well engineered, precisely manufactured and backed by a widespread authorized service.

**built, Buick will build them**



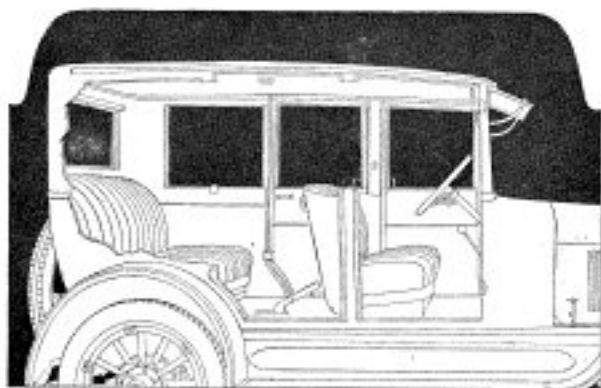


*22-Four-37  
Five Passenger Sedan*

THE enjoyment of possessing a car which lacks nothing in the way of attractiveness, refinement or mechanical ability—and at a reasonable price—can be realized completely in this Five Passenger Sedan.

Designed in such a way as to conserve ample space in the interior for the comfortable arrangement of seats, this model offers for the usual-sized family, accommodations which make for the most pleasurable transportation.

The front seat is of solid type construction. The gear controls are placed well forward yet within easy reach of the driver. The doors are generously large and are furnished with handles to facilitate closing from within. Both the Sedan and the Three Passenger Coupe mounted on this same four-cylinder chassis have extra deep upholstery on the cushions and seat backs. The floors are covered with carpets matching the upholstery. A dome light in the ceiling illuminates the interior when desired.



Improved front and rear springs afford a delightfully easy riding motion and maximum comfort for all passengers. Other pleasing features of the closed models include adjustable windshield visors and improved windshield cleaners.



When better automobiles are built, Buick will build them