

1984

CHRYSLER

NEW YORKER



THE
1984 NEW YORKER
—ULTIMATE LUXURY,
ULTIMATE
TECHNOLOGY.

The introduction of the New Yorker last year revolutionized luxury car state of the art. The combination of front-wheel drive, plush comfort, stable ride, efficiency and ruggedness won it immediate recognition and acceptance.

Never known for satisfaction with the status quo, Chrysler Corporation engineers and designers continued to refine New Yorker, and their latest advancements are now available for 1984.

New looks are there in the form of a distinguished "waterfall" grille, wraparound taillamps, and saddle type belt moldings.

But even more significant are the advancements you'll discover in a test drive. New response and efficiency are evident at the touch of the throttle because of the standard 2.6-liter Trans-4 engine (built by Mitsubishi).

You have a new power option available in the 2.2-liter turbo-charged engine with electronic fuel injection, which is rated at 140 hp. This engine gives you excellent acceleration for passing and maneuvering in traffic. The turbocharger, with Chrysler's unique water-cooling feature for increased turbine bearing life because of improved heat dissipation, packs a greater volume of fuel/air mixture into the combustion chamber.

Look over the 1984 New Yorker's new technology and luxury features in this catalog, then experience them first hand by visiting your Chrysler dealer for a test drive.



About this catalog. We have tried to make this catalog as complete as possible. And we hope you find it useful. However, since the time of printing, some of the information you'll find here may have been updated. Your dealer has details, and you should ask him for current information before ordering.

Some of the equipment shown or described throughout this catalog is available at extra cost.

THERE'S A LOT
OF TECHNOLOGY
IN NEW YORKER'S
SMOOTH RIDE.

Part of the Chrysler New Yorker tradition is a smooth, stable, quiet and comfortable ride. The 1984 Chrysler New Yorker carries on this tradition through applied high technology.

The New Yorker's combination of front-wheel drive engineering, fully independent front Iso-Strut/rear coil spring suspension and 103-inch wheelbase serves as the basis for smooth ride and precise control.

Suspension improvements for 1984 include recalibrated spring rates, redesigned spring seats, new jounce bumpers and new isolator rubber bushings in the suspension. These new bushings are dual path—sending shock absorber loads one way and spring loads another to help isolate bumps, vibration and road shocks.

A Quiet Control Sound Package and special body mounts and sealing help keep road noises and vibrations from penetrating the passenger compartment.

Precision control is the result of the front-wheel drive stability and sure-tracking rack-and-pinion steering. New standard all-weather steel-belted radial P185/75R14 wide white sidewall tires help both ride and control.



New Yorker shown above and at right in Black with Black vinyl landau roof.





"PLUSH"
BECOMES
CONTEMPORARY.

New Yorker's traditional interior luxury takes on new luster for 1984 with new pillow style 50/50 front seats and rear bench seats in luxury cloth. The front seats have driver and passenger recliners, dual armrests, storage console, and seatback and cushion pockets. New leather-and-vinyl seating is optional.

This new plush pillow styling is complimented by elegant door trim panels with lavalier handles.

The five adults who can ride in New Yorker comfortably will find other convenient luxury touches in roof-mounted passenger assist handles, C-pillar courtesy/reading lamps, and standard power windows.

Thick-cut pile carpeting covers the floors, rear shelf, and cowl sides. Door panels and instrument panel have dark butterfly walnut woodtone accents and bright trim.

Standard 50/50 velvet cloth bench seat, shown in Red, with dual armrests, reclining seatbacks, and seat-mounted center console with seat controls and storage bins.



THE
1984 NEW YORKER
IS DESIGNED
TO BE DRIVEN.

New luxury and new technology combine to make the 1984 New Yorker a driver's delight. A new electronic instrument cluster displays oil, volt, fuel and engine temperature conditions, and provides a digital readout for speedometer and odometer. A Visual Message Center includes a car graphic that reports on washer fluid, trunk lid ajar, door ajar and low fuel. The standard AM radio with electronic tuning also includes an integral digital clock. All three optional radios also contain the integral digital clock. A luxury two-spoke steering wheel is standard.

A new optional electronic navigator* supplies important trip information instantly at the touch of a button. Available information includes: miles per gallon, driving range and more.

The instrument panel has handsome new butterfly walnut woodtone treatment. Similar treatment highlights the convenient center console, which contains outlets for the ventilation system and optional bi-level air conditioning. The console also contains storage compartments, a cassette tape bin, coin holder, ash receiver and slide-out cup holder.

* Available January 1984.

Standard padded instrument panel and electronic cluster, shown in Red, with available AM/FM stereo radio and air conditioning.



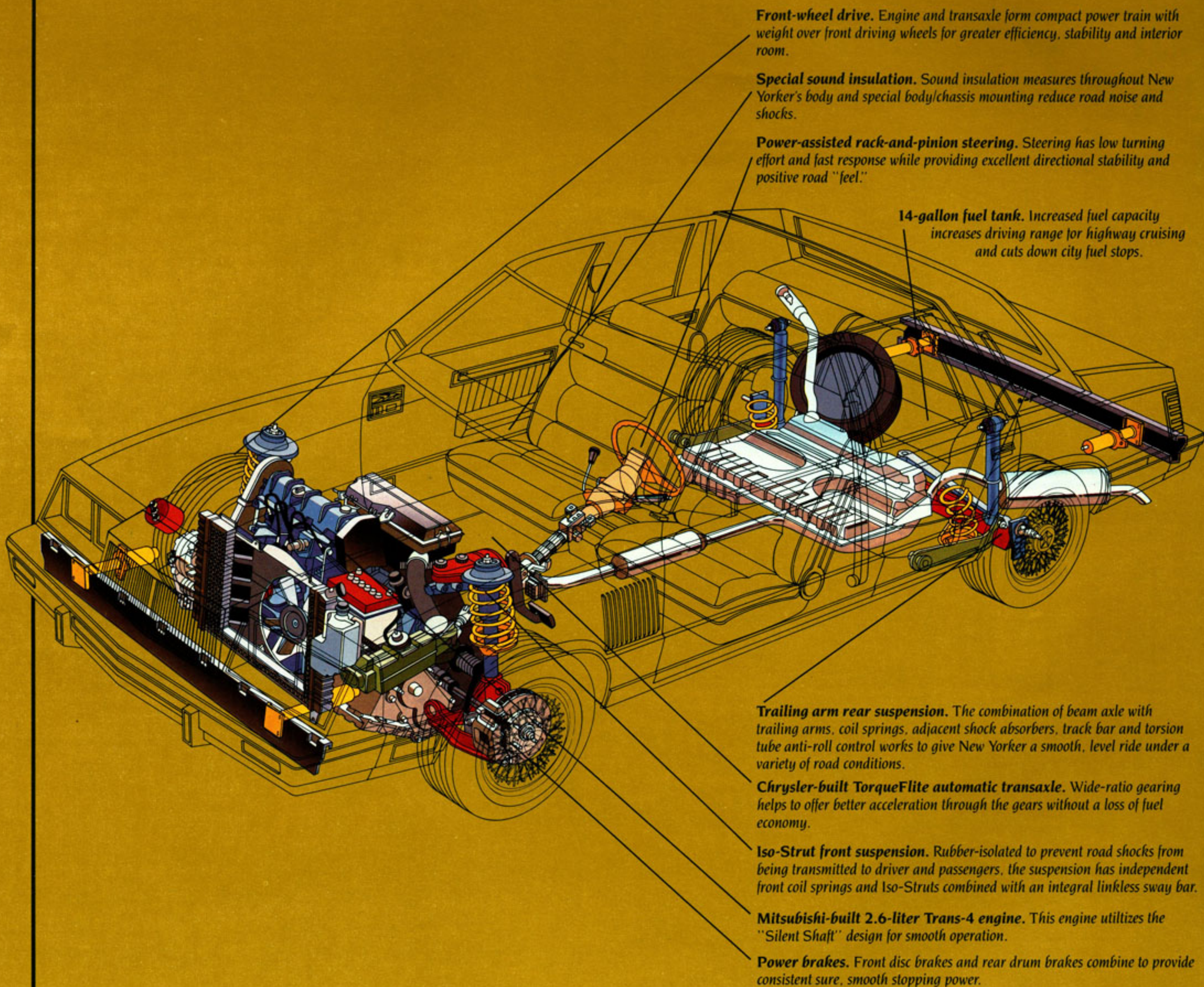
NEW YORKER
DRESSES
HIGH TECH
FORMALLY.

Elegant, formal style always has played an important part in New Yorker's success. True again for 1984.

The crisp, distinctive roof lines are enhanced by a padded vinyl landau roof accented by coach lamps and bright roof band. The new wraparound taillamps contribute functional style. New wide belt moldings call attention to New Yorker's smooth, aerodynamic shape. New wide full wheel opening moldings also enhance the New Yorker look and call attention to the standard wire wheel covers with integral locks. New cast aluminum road wheels are optional.

All wheels, standard and optional, are mounted with all-weather steel-belted radial tires.

New Yorker shown in Mink Brown Pearl Coat with Brown vinyl landau roof.



Front-wheel drive. Engine and transaxle form compact power train with weight over front driving wheels for greater efficiency, stability and interior room.

Special sound insulation. Sound insulation measures throughout New Yorker's body and special body/chassis mounting reduce road noise and shocks.

Power-assisted rack-and-pinion steering. Steering has low turning effort and fast response while providing excellent directional stability and positive road "feel."

14-gallon fuel tank. Increased fuel capacity increases driving range for highway cruising and cuts down city fuel stops.

Trailing arm rear suspension. The combination of beam axle with trailing arms, coil springs, adjacent shock absorbers, track bar and torsion tube anti-roll control works to give New Yorker a smooth, level ride under a variety of road conditions.

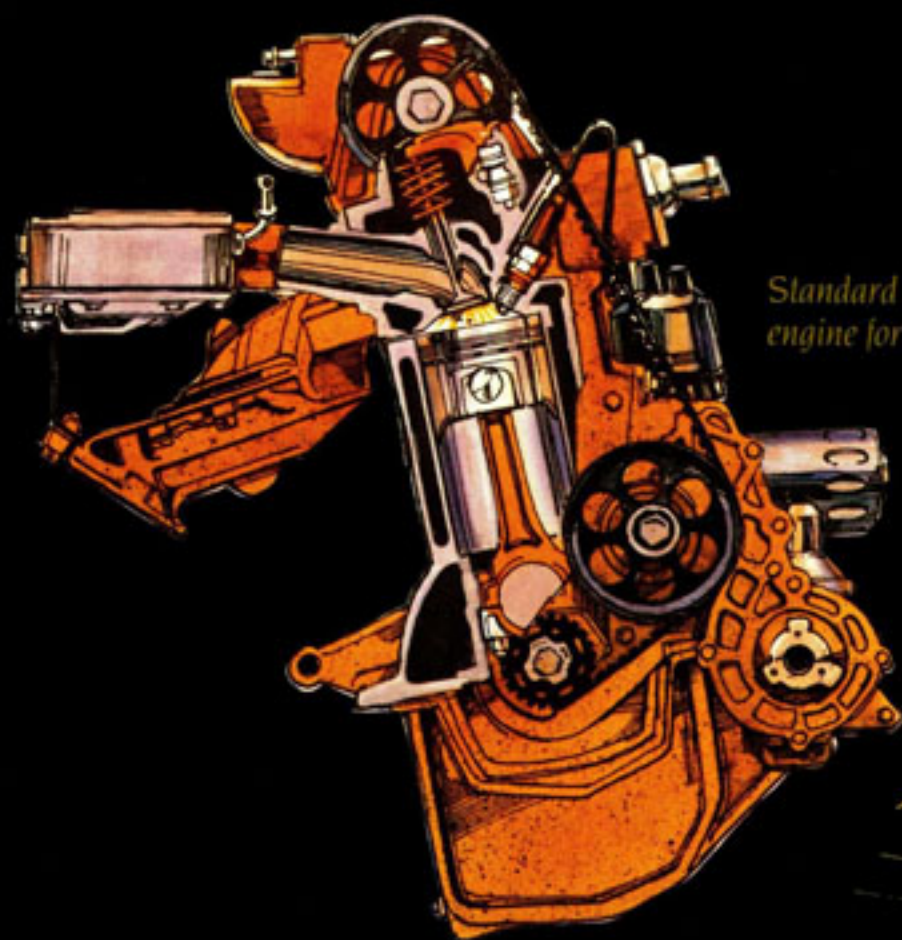
Chrysler-built TorqueFlite automatic transaxle. Wide-ratio gearing helps to offer better acceleration through the gears without a loss of fuel economy.

Iso-Strut front suspension. Rubber-isolated to prevent road shocks from being transmitted to driver and passengers, the suspension has independent front coil springs and Iso-Struts combined with an integral linkless sway bar.

Mitsubishi-built 2.6-liter Trans-4 engine. This engine utilizes the "Silent Shaft" design for smooth operation.

Power brakes. Front disc brakes and rear drum brakes combine to provide consistent sure, smooth stopping power.

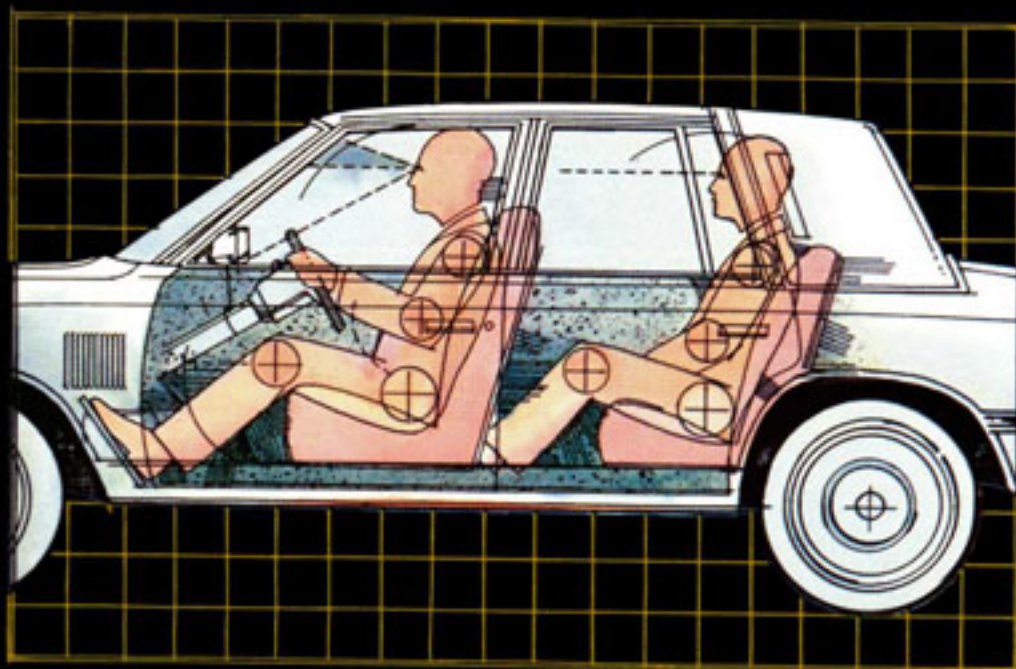
New Yorker's sleek, aerodynamic styling looks good and helps make it fuel efficient.



Standard Mitsubishi-built 2.6-liter Trans-4 Silent Shaft engine for smooth operation.



Robotic welding is one of the many assembly steps that create New Yorker with quality.



The New Yorker is designed to carry people in roomy, luxurious comfort.

DURABILITY AND QUALITY ARE NEW YORKER TRAITS.

The Chrysler Corporation 5/50 limited warranty is offered with confidence on New Yorker because of a multi-phase quality program which includes these important steps:

- Extensive use of galvanized sheet metal in fabricating the unitized body—one of the best known corrosion protection methods
- Use of pre-coated steels
- Seven-step dip-and-spray process for bodies
- CAD and CAM—computer-aided design and computer-aided manufacturing—for more precise quality control
- Joint labor/management quality teams.

Because of these and other quality provisions, Chrysler is able to offer the 5/50 Protection Plan which extends the limited warranty coverage on New Yorker beyond the normal 12-month/12,000-mile expiration point to five years or 50,000 miles, whichever comes first, for power train components, including engine, transaxle, and axle—plus outer panel rust-through protection. The 5/50 Protection Plan covers the optional turbo-charged 2.2-liter, making it the first turbo engine to be covered for this extended period. A deductible may apply. Fleet and lease vehicles are excluded. See your Chrysler dealer for details.





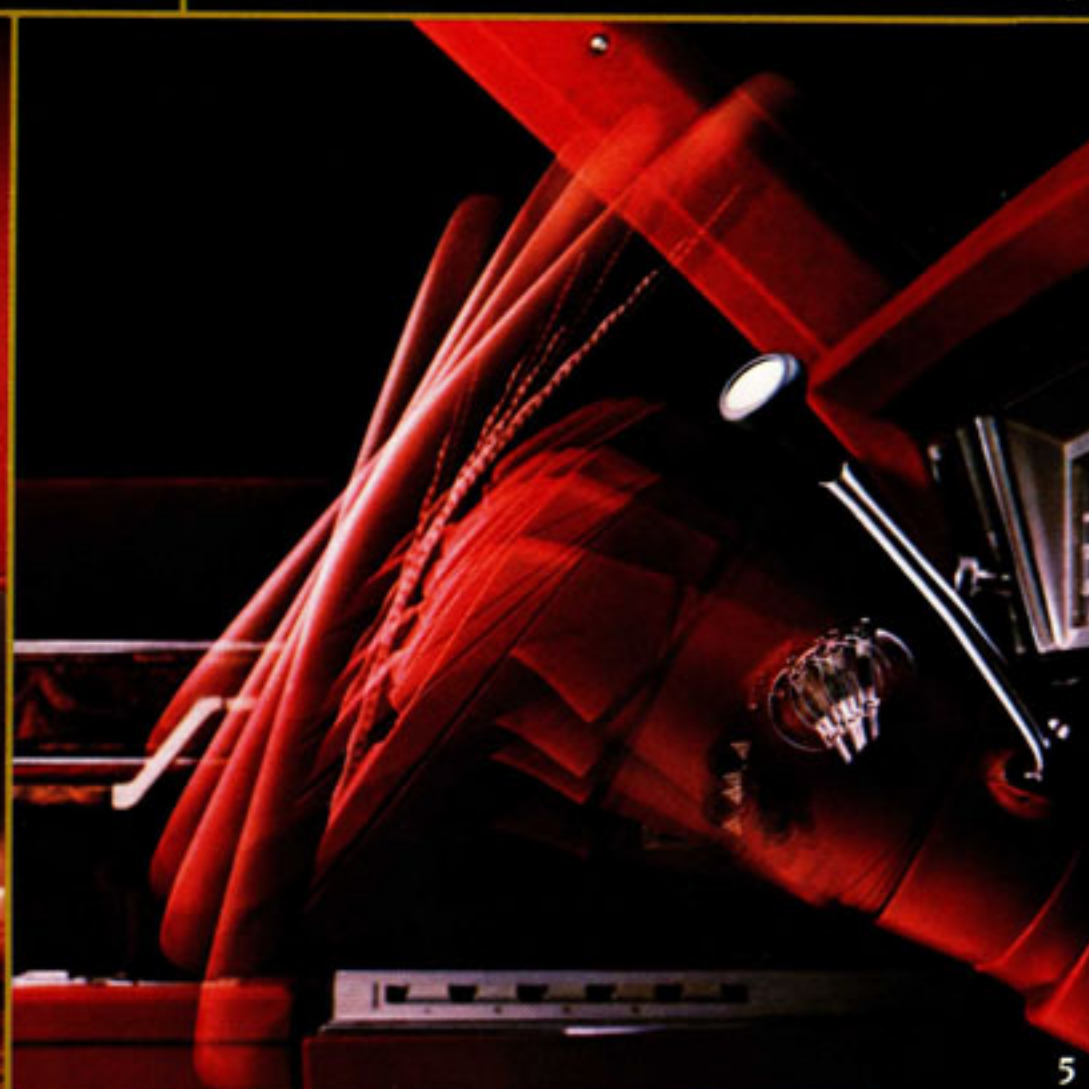
2



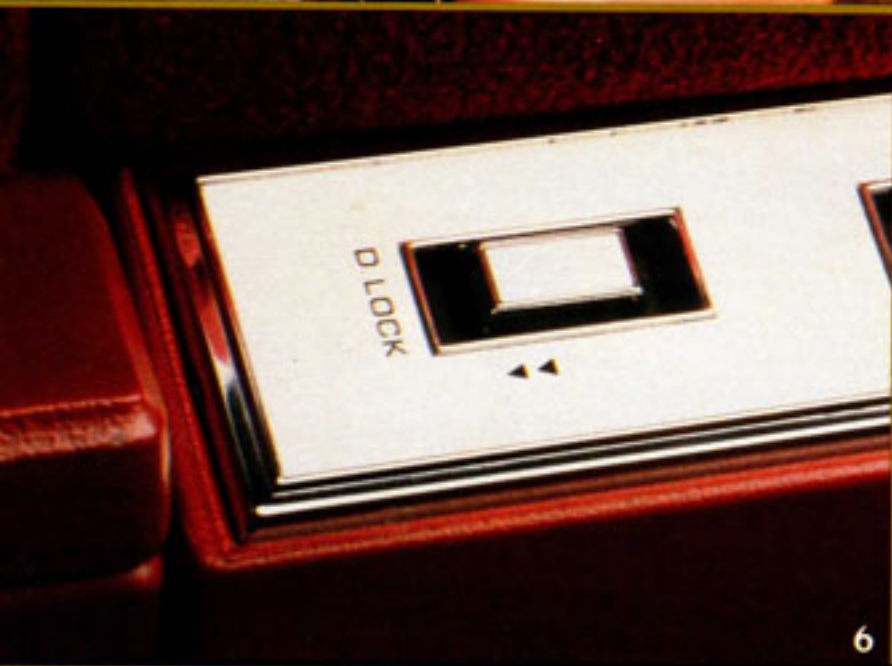
3



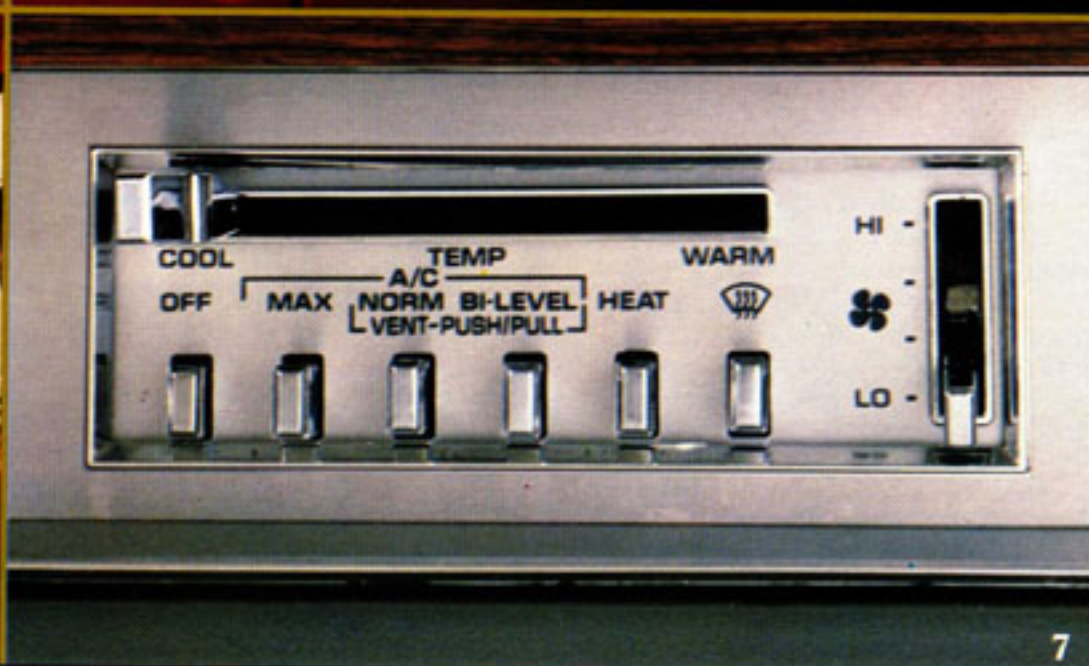
4



5



6



7

ADD A FEW TOUCHES OF YOUR OWN.

Completeness is one of the 1984 New Yorker's many attributes, but you can maximize the comfort, convenience, style and performance with options of your own particular choosing. Some are shown and described here. A more complete list appears on page 16.

1. Leather-and-vinyl 50/50 front seats. Part of the optional leather-and-vinyl interior trim, the seats are individually adjustable. They have adjustable head restraints, reclining seatbacks and center console with seat controls. There also are pockets on the seat cushion facings and seatbacks.

2. AM/FM/MX stereo radio and cassette player with Dolby* noise reduction. This electronically tuned receiver includes a stereo cassette player with convenient fingertip controls. It also includes a six-speaker stereo system. And, like all New Yorker radios, it includes integral digital clock.

3. Automatic speed control. For improved fuel economy during highway cruising, set the speed control at the desired miles per hour and you travel at that speed automatically.

4. Illuminated visor vanity mirror. A convenient feature for driving companions. Lights when opened in its position on the right sun visor.

5. Tilt steering wheel. Adjusts to six different angles to suit your own favorite driving position. The tilt wheel also provides for more convenient entry and exit.

6. Power door locks. You get security and convenience with this feature. Lock and unlock all doors at the touch of a switch.

7. Air conditioning. Cool, clean air is yours at the touch of a control. Bi-level ventilation increases air circulation and helps reduce cold spots.

*Dolby is a trademark of Dolby Laboratories.

NEW YORKER OPTIONS

Certain models, packages and options are subject to specific restrictions, requirements, and late availability. Consult your dealer for current ordering information.

- Air conditioning—with bi-level air flow
- Alternator—90-amp available with 2.2-liter turbo engine option
- Battery—500-amp, maintenance-free; heavy-duty
- Body-side protective moldings—bright accents; color-keyed
- Defroster—rear window; electrically heated (required at extra cost in New York state)
- Door edge protective moldings—not available with body-side protective moldings
- Electronic Navigator
- Emissions controls—California (required at extra cost on all vehicles registered in California)
- Engine—2.2-liter turbocharged, fuel injected; includes "Turbo" nameplates for front fenders
- Engine cooling—vehicles without factory air conditioning may have special cooling requirements for later air conditioning installation; see your dealer for details.
- Illuminated Entry System
- Mats—floor, front and rear; color-keyed
- Mirror—passenger visor vanity; illuminated
- Power door locks
- Power left front seat

RADIOS (digital clock function deactivated with optional Electronic Navigator.)

- AM/FM/MX stereo—electronically tuned, with digital clock display
- AM/FM/MX stereo—electronically tuned, with digital clock display, Seek-and-Scan feature, and six-speaker sound system
- AM/FM/MX stereo radio and cassette player with Dolby* sound—electronically tuned, with digital clock display and six-speaker sound system
- Radio delete—standard radio may be deleted for credit on factory orders
- Speaker Package—premium; for AM/FM radios

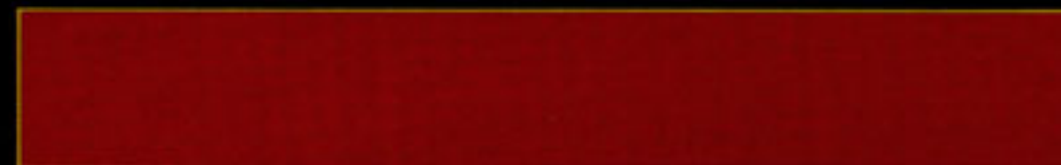
- Road wheels—aluminum
- Seats—50/50 leather-and-vinyl pillow style; with driver and passenger recliners, seat-mounted center console, and seatback pockets
- Spare tire—conventional
- Speed control—automatic
- Sport handling suspension (recommended with turbocharged engine option.)
- Steering column—tilt; deluxe wipers required
- Steering wheel—luxury; leather-wrapped, two-spoke
- Undercoating

*Dolby is a trademark of Dolby Laboratories.

NEW YORKER EXTERIOR COLORS



Crimson Red



Garnet Red Pearl Coat



Mink Brown Pearl Coat



Beige Crystal Coat



Nightwatch Blue



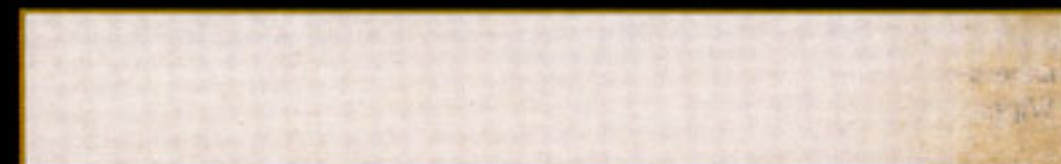
Gunmetal Blue Pearl Coat



Black



Charcoal Metallic Pearl Coat



Radiant Silver Crystal Coat



White

NOTE: Due to occasional printing irregularities, the colors shown may vary slightly from actual hues. See your Chrysler dealer for accurate color chips.

OPTIONAL 5/50 SERVICE CONTRACT COVERAGE



CHRYSLER CORPORATION'S PROTECTION PLAN

Chrysler Corporation offers a 5/50 "Added Coverage" (in Florida "Added Value Plan") Service Contract which provides protection against rising service and parts costs for specified major repairs not included in the 5/50 Limited Warranty. Coverage starts on the specified components in the plan after your vehicle's "basic" 12-month/12,000-mile warranty expires on these components and continues for five years or 50,000 miles (whichever occurs first) from the vehicle's original warranty start date. A deductible applies. The plan provides an allowance for alternate transportation and towing. Ask your dealer for details.

DIMENSIONS, WEIGHT AND CAPACITY

- Length: 185.7" • Width: 68.3"
- Height: 52.9" • Wheelbase: 103.3"
- Turning Diameter: 35'6" • Curb Weight: 2,801 lbs • Tread (front/rear): 57.6"/57.0" • Cargo Capacity (est): 17.0 cu ft • Passenger Capacity: 5
- Fuel Capacity: 14 gal

ENGINES AND TRANSAXLES

Type	Displacement	Bore & Stroke	Compression Ratio	Horsepower SAE Net @ RPM	Torque (lb-ft @ 2,800)	Transaxle Availability
Federal/California	2.6-liter* 2-bbl (156 CID)	3.59" x 3.86"	8.7:1	101 hp @ 4,800 (99 hp in Calif.)	140 lb-ft @ 2,800 (137 lb-ft in Calif.)	automatic (3.02 OTGR)
Federal/California	2.2-liter turbocharged w/electronic fuel injection (135 CID)	3.44" x 3.62"	8.2:1	140 hp @ 5,200	160 lb-ft @ 3,600	automatic (3.02 OTGR)

OTGR—overall top gear ratio.

*Built by Mitsubishi Motors Corporation.

STANDARD FEATURES

- Acoustical Package • Alternator—75-ampere with 2.6-liter engine • Armrests—door • Ash receivers • Battery—370-ampere; maintenance-free • Battery test indicator • Brakes—power, dual diagonal; disc front; drum rear with two-stage booster system • Bumper guards—front and rear (optional only with 2.6-liter engine and California emissions controls) • Bumper rub strips—bright • Bumpers—energy absorbing • Carpeting—passenger compartment • Cigarette lighter • Coat hooks • Coating—lower body protection; urethane • Console—with ash receiver, storage/cassette bin, cup and coin holder • Coolant overflow reservoir • Corrosion protection—extensive use of galvanized steel • Deck lid power release • Directional signals—with lane-change feature • Electronic ignition and voltage regulator • Electronic Voice Alert System—audibly announces: key in ignition, headlights on, fasten seat belts, door ajar, low washer fluid, parking brake on, low fuel, low engine oil pressure, engine overheating, electrical system malfunction, all monitored systems functioning • Engine—2.6-liter Mitsubishi built • Fuel filler cap—tethered • Fuel filler door—with key lock and power release • Fuel tank—14-gallon • Glass—tinted: all windows • Headlamps—halogen high and low beam; rectangular • Headliners—cloth-covered; color-keyed • Hood—counterbalanced • Hood ornament—crystalline Pentastar • Hood release—inside • Horns—dual • Instrument panel—includes Car Graphic Message Center, electronic speedometer, electronic odometer, and electronic oil, volt, fuel and temperature indicators • Instrument panel—padded • Insulation—body sound: special • Insulation pad—hood • Lamps—cornering • Lights—ash receiver, dome/reading, glove box, ignition switch (with time delay), parking brake warning, side

- marker with reflectors; trunk, underhood, forward console, door courtesy, C-pillar courtesy/reading • Lock—glove box, forward console: lower bin • Lock cover—deck lid • Luxury steering wheel • Mirror—inside, rearview day/night • Mirrors—outside, dual power adjustable: chrome, aero style • Moldings—windshield, belt, upper door frame, quarter window, sill, wheel opening, drip rail, lower deck lid, headlamp bezel, grille extension, front and rear side marker bezel • Optical horn—pass/flash system • Power steering • Radio—AM; electronically tuned; with integral digital clock • Roof—landau: fully padded vinyl • Seats—50/50 pillow style; with dual armrests, driver and passenger recliners, seat-mounted consolettes, seatback pockets • Stripes—body-side, lower deck; tape • Suspension—front: Iso-Strut with coil springs around the shock absorbers, linkless sway bar; rear: flex arm beam axle with trailing link coil springs and premium shock absorbers • Taillamps—wraparound; with bright accents • Tire—spare: compact, high pressure • Tires—all-weather steel-belted radial white sidewall • Transaxle—three-speed automatic • Trunk Dress-Up Package • Ventilation system—upper level: forced, four outlets • Wheel covers—wire • Windows—power • Windshield wipers and washers—deluxe intermittent; electric • Wiper system—concealed

STANDARD SAFETY FEATURES

- Safety-Rim wheels • Combination lap-shoulder belts for the driver and right front passenger, and lap belts for all other passengers • Seat belt reminder system • Energy-absorbing steering wheel • Dual braking system with separate brake fluid reservoirs in the master cylinder • Brake fluid pressure loss warning light (also serves as indicator when parking brake is applied) • Hazard warning

- flasher system • Turn signals with lane-change feature • Electronic ignition • Backup lights • Energy-absorbing front seatbacks • Inside and outside rearview mirrors • Side marker lights and reflectors • Fade-resistant front disc brakes • Electric windshield washers and wipers • Ignition and steering column lock • Anti-theft trunk lock • Headlamp and wiper circuit breakers with automatic reset • Key-left-in-ignition warning • Non-over-ride door locks (except driver's door) • Side door beams • Dual throttle return springs • Interlocking door latches • Recessed inside locking door latches • Recessed inside door release handles • Rotary glove box latch • Reinforced windshield header and roof • Glare reduction measures for windshield wipers, instrument panel, and steering wheel • Double ball-joint rearview mirror mount

CONSIDER LEASING FROM THE LEASING PROFESSIONALS

In these days of tight money and high interest rates more consumers are considering leasing as an alternative to buying. Leasing a new Chrysler New Yorker usually eliminates large down payments and often results in lower monthly payments because you're paying only for that portion of the vehicle life under the leasing agreement.

Leasing could be right for you, and the more you learn about it the more likely you are to consider it seriously. If leasing sounds like a sensible solution to your transportation needs, talk it over with us—your leasing professionals.

INTERIOR TRIM



Standard New Yorker interior. Velour cloth 50/50 individually adjustable front seats with adjustable head restraints, folding center armrest and reclining seatbacks. Front seat cushion facings and seatbacks have pockets. Front and rear seats are pillow style. Front seats have center consolettes with seat controls and storage bins; rear seat has folding center armrest.



Optional New Yorker interior. Similar in style and features to the standard interior, this option features handsome leather-and-vinyl seat coverings in Beige, Blue, Brown, Charcoal and Red, with color selection compatible with exterior colors.

All product illustrations and specifications are based on authorized information. Although descriptions are believed correct at publication approval, accuracy cannot be guaranteed. Chrysler Corporation reserves the right to make changes from time to time, without notice or obligation, in prices, specifications, colors and materials, and to change or discontinue models. See your dealer for the latest information.

MOPAR parts are engineered by Chrysler Corporation for use in your Chrysler New Yorker. When replacement is necessary, be sure to specify MOPAR parts. Used by professional mechanics all over the world.



A PRODUCT OF
THE NEW CHRYSLER
CORPORATION



THE NEW CHRYSLER CORPORATION