



Innovation that excites

2016 MURANO®

**Thumbs Off Your Phone While Driving!**

Every year, too many people die because we can't put our phones down while driving. That's why Nissan is supporting the Red Thumb Movement as part of our ongoing commitment to help reduce fatalities on the road. So paint your thumbnail red as a reminder not to pick up your phone when you're behind the wheel. Find out more at [NissanUSA.com/redthumb](http://NissanUSA.com/redthumb)



**LOOKING FOR MORE INFO?**

Go to [NissanUSA.com](http://NissanUSA.com), where you'll find a complete interactive digital brochure for every vehicle in our lineup. You'll get the full product story, enhanced with interactive demos and videos, plus an easy-to-use guide to trim levels, colors, accessories, and more. Or you can get the Interactive Brochure Hub and enjoy it on your tablet.



Available on the App Store\* and Google Play.\*

Los folletos de Nissan también están disponibles en español. Visita: [NissanUSA.com/folletos-espanol](http://NissanUSA.com/folletos-espanol)

And follow Nissan on:



visit [NissanUSA.com/murano](http://NissanUSA.com/murano)

The App Store® logo is a registered trademark of Apple, Inc. All rights reserved. Facebook® is a registered trademark of Facebook, Inc. Google Play® is a registered trademark of Google, Inc. Twitter® is a registered trademark of Twitter, Inc. YouTube® is a registered trademark of Google Inc. This brochure is intended for general descriptive and informational purposes only. It is subject to change and does not constitute an offer, representation or warranty (express or implied) by Nissan North America, Inc. Interested parties should confirm the accuracy of any information in this brochure as it relates to a vehicle directly with Nissan North America, Inc., before relying on it to make a purchase decision. Nissan North America, Inc., reserves the right to make changes, at any time, without prior notice, in prices, colors, materials, equipment, specifications, and models and to discontinue models or equipment. Due to continuous product development and other pre- and post-production factors, actual vehicle, materials and specifications may vary from this brochure. Some vehicles shown with optional equipment. See the actual vehicle for complete accuracy. Availability and delivery times for particular models or equipment may vary. Specifications, options and accessories may differ in Hawaii, U.S. territories and other countries. For additional information on availability, options or accessories, see your Nissan dealer or contact Nissan North America, Inc. At [NissanUSA.com](http://NissanUSA.com), you'll find virtual product demonstrations, a way to "build your own Nissan," a dealer locator, and more information about key Nissan support services. Or if you'd prefer, call 1-800-NISSAN-3 for answers to specific questions about Murano® or any other Nissan vehicle. The Nissan names, logos, product names, feature names, and slogans are trademarks owned by or licensed to Nissan Motor Co. Ltd. and/or its North American subsidiaries. Other trademarks and trade names are those of their respective owners. Always wear your seat belt, and please don't drink and drive. ©2015 Nissan North America, Inc.

PRINTED IN USA.



Innovation that excites



**SHARE** the experience that's designed around you. Say yes to a night out and the chance to turn heads. Reconnect with your real social network in the cushy lounge interior, perfect for relaxing or living it up. Tap in to technology that pumps the music from any seat and brings you closer together. The evening starts up when Murano® does. The 2016 Nissan Murano®, the dynamic crossover that enhances **ALL THAT MATTERS.**



Nissan Murano® Platinum AWD shown in Pacific Sunset with optional equipment.



## MOVE AHEAD WITH CONFIDENCE.

Take on more. Murano®'s available AWD tackles a variety of terrains, while helping to keep you confident on the road. The 260-hp, 3.5-liter V6 engine provides impressive power without sacrificing efficiency. Or further ramp up the fuel efficiency with the available hybrid engine. And the available Intelligent Cruise Control helps you keep a set distance from the vehicle ahead of you, even at low speeds.<sup>1</sup>

Available All-Wheel Drive | 260-hp, 3.5-liter V6 | SuperCharged Hybrid Engine | Intelligent Cruise Control<sup>1</sup>



## PLAY THE PERFECT HOST.

A unique social space. Murano®'s lounge-like interior is designed to bring people together. The wider center console allows everyone to mingle without leaning or straining. And with meaningful technology within arm's reach of any seat, Murano® makes every drive an all-inclusive trip.



## EXPECT THE EXCEPTIONAL.

<sup>1</sup>Intelligent Cruise Control is not a collision avoidance system or warning device. Designed to use limited braking. Failure to apply the brakes could result in an accident. <sup>2</sup>PFCW is intended to warn you before a collision occurs; it cannot prevent a collision. Speed and other limitations apply. See Owner's Manual for details. <sup>3</sup>FEB cannot prevent accidents due to carelessness or dangerous driving techniques. It may not provide warning or braking in certain conditions. Speed limitations apply. <sup>4</sup>FCW is intended to warn you before a collision occurs; it cannot prevent a collision. Speed and other limitations apply. See Owner's Manual for details. <sup>5</sup>Blind Spot Warning is not a substitute for proper lane change procedures. The system will not prevent contact with other vehicles or accidents. It may not detect every vehicle or object around you. <sup>6</sup>Not a substitute for proper backing procedures. May not detect all moving vehicles. Speed and other limitations apply. See Owner's Manual for details. <sup>7</sup>Driving is serious business. Only use features when safe to do so. App availability is dependent upon vehicle model, trim level, packaging, and/or options. See [NissanUSA.com/connect](http://NissanUSA.com/connect) for complete app availability details. Never program while driving. GPS mapping may not be detailed in all areas or reflect current road status. Compatible smartphone required. Cellular network and GPS signals not available in all areas and/or at all times. Technology is evolving, and changes by independent companies are not within Nissan's control. Nissan is not responsible for associated costs that may be required for continued operation due to cellular network termination (including equipment

## GET AWAY WITH JUST A WARNING.

Murano®'s got your back. And the rest of you, too. Whether you're changing lanes on the highway, making your way in traffic, or deftly maneuvering your way into a parking spot, Murano®'s available Safety Shield Technologies™ act as a second set of eyes, giving you a whole new way to double check. Murano® can even help detect if you're getting drowsy or inattentive, giving you an audible and visual alert.

Predictive Forward Collision Warning<sup>2</sup> | Forward Emergency Braking<sup>3,4</sup> | Blind Spot Warning<sup>5</sup> | Rear Cross Traffic Alert<sup>6</sup>

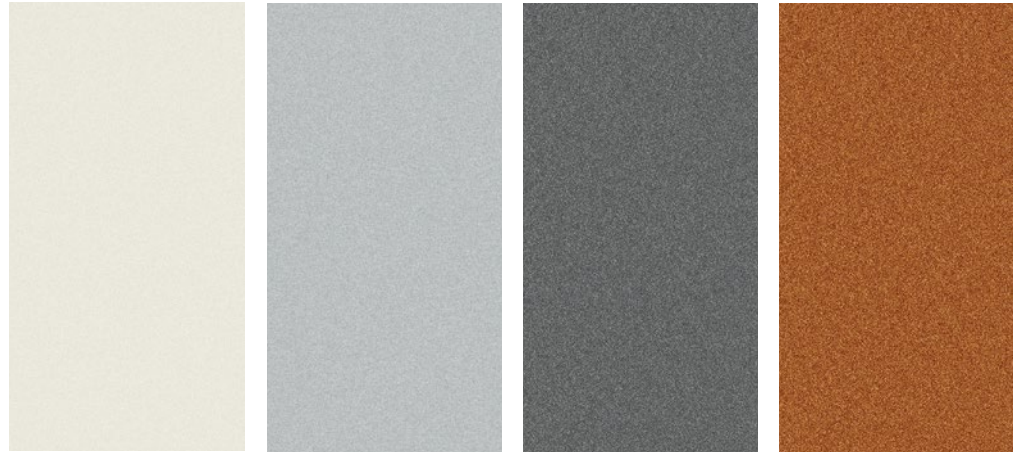


## NissanConnect<sup>SM7</sup> KEEP YOUR WORLD AT YOUR FINGERTIPS.

Google® Search for a yoga class.<sup>8</sup> Call hands-free to invite friends to dinner. Find the cheapest gas on your way. All with your hand-picked music, podcasts and more along for the ride. NissanConnect<sup>SM</sup> makes it all possible, working seamlessly together through your smartphone and Murano®'s touch-screen with tap and swipe control.<sup>7</sup>

upgrades, if available, or roaming charges on alternative networks) or other third party changes. Should a third party provider terminate/restrict service, service may be terminated without notice and with no liability to Nissan and its agents or affiliates. Subscription Agreement required and terms and conditions of Subscription Agreement apply. See [NissanUSA.com/connect](http://NissanUSA.com/connect) for details. Thirty-six (36) month trial period begins on your date of vehicle purchase or lease of a new Nissan; subsequently a paid subscription is required (excluding Pandora,® if Pandora® app via NissanConnect™ is equipped on vehicle) at the then current rate to continue to receive services. Text rates and/or data usage may apply. <sup>8</sup>Google® Points of Interest and/or Google® Send to Car may require subscription and owner consent to activate. Certain services, including Google® Points of Interest and/or Google® Send to Car, provided by independent companies not within Nissan's control. Should service provider terminate/restrict service, service may be suspended or terminated without notice or liability to Nissan and/or its agents. Nissan not responsible for any equipment replacement or upgrades, or associated costs, that may be required for continued operation due to service changes. Bluetooth® word mark and logos are owned by Bluetooth SIG, Inc. and any use of such marks by Nissan is under license. See [NissanUSA.com/bluetooth](http://NissanUSA.com/bluetooth) for details. Google® is a registered trademark of Google Inc. The Sirius,® XM,® and SiriusXM® names and all related marks and logos are trademarks of Sirius XM Radio Inc.

## CHOOSE YOUR COLOR



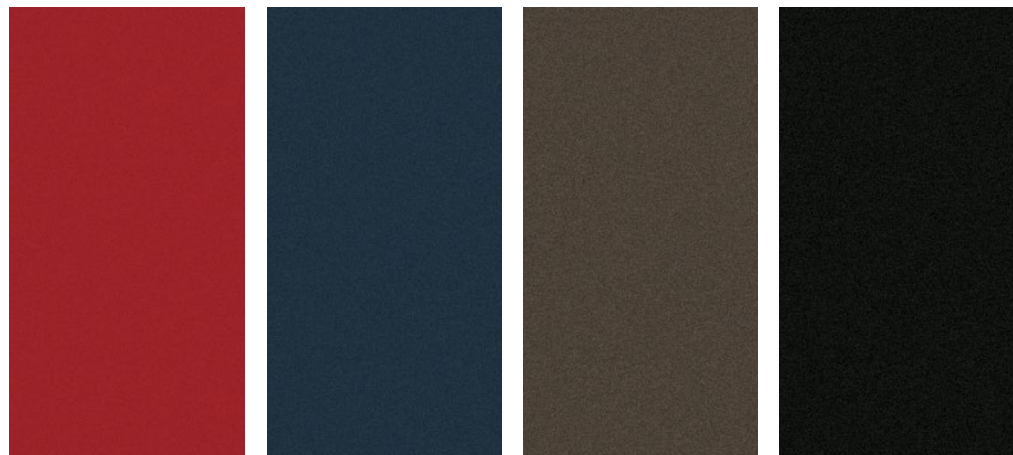
Pearl White<sup>1</sup> QAB

Brilliant Silver K23

Gun Metallic KAD

Pacific Sunset EAW

	S	SV	SL	PLATINUM
CASHMERE CLOTH	■	■		
GRAPHITE CLOTH	■	■		
CASHMERE LEATHER			■	■
GRAPHITE LEATHER			■	■
MOCHA LEATHER			■	■



Cayenne Red NAH

Arctic Blue Metallic RGB

Java Metallic CAJ

Magnetic Black G41

	S	SV	SL	PLATINUM
CASHMERE CLOTH	■	■		
GRAPHITE CLOTH	■	■		
CASHMERE LEATHER			■	■
GRAPHITE LEATHER			■	■
MOCHA LEATHER			■	■

■ Standard  
<sup>1</sup>Extra cost option.

Nissan has taken care to ensure that the color swatches presented here are the closest possible representations of actual vehicle colors. Swatches may vary slightly due to the printing process and whether viewed in daylight, fluorescent or incandescent light. Please see the actual colors at your local Nissan dealer.

## CHOOSE YOUR FABRIC



Nissan Murano® Platinum AWD shown in Cashmere Leather with optional equipment.



Cashmere Cloth  
S | SV

Graphite Cloth  
S | SV

Cashmere Leather  
SL | PLATINUM

Graphite Leather  
SL | PLATINUM

Mocha Leather  
SL | PLATINUM



## CHOOSE YOUR TRIM LEVEL

**S**

- 260-hp, 3.5-liter V6 engine
- Xtronic CVT® transmission
- Intuitive All-Wheel Drive or Front-Wheel Drive
- Vehicle Dynamic Control (VDC) with Traction Control System (TCS)
- 18" Machine-finished wheels
- Automatic on/off headlights
- LED Daytime Running Lights
- LED taillights
- Dual Zone Automatic Temperature Control (ATC) with in-cabin microfilter
- Nissan Intelligent Key® with Push Button Ignition
- Illuminated steering wheel-mounted controls
- 6-way manual driver's seat
- 60/40 Split fold-down rear seatbacks
- Cloth seats
- Advanced Drive-Assist® Display with 7.0" display
- 7.0" Color monitor
- NissanConnectSM with Mobile Apps<sup>1</sup>
- Hands-free text messaging assistant<sup>2</sup>
- Bluetooth® Hands-free Phone System and streaming audio<sup>3</sup>
- RearView Monitor
- AM/FM/CD audio system
- Auxiliary audio input jack
- Front USB port
- SiriusXM® Satellite Radio<sup>4</sup>
- 12-volt DC power outlets (3)
- Tire Pressure Monitoring System (TPMS) with Easy-Fill Tire Alert
- Nissan Advanced Air Bag System

### KEY AVAILABLE PACKAGE:

- Navigation Package



**SV**

### INCLUDES S EQUIPMENT PLUS:

- Fog lights
- Black roof rails
- NissanConnectSM with Navigation with 8.0" multi-touch control color monitor<sup>1</sup>
- Voice Recognition for audio and navigation
- SiriusXM® Traffic and Travel Link<sup>4</sup>
- HD Radio<sup>5</sup>
- Remote Engine Start System with Intelligent Climate Control
- 8-way power driver's seat
- Driver's seat power lumbar support
- 4-way power front-passenger's seat
- Leather-wrapped steering wheel and shift knob
- Rear USB connection port for iPod® interface and other compatible devices

### KEY AVAILABLE PACKAGE:

- Premium Package



**SL**

### INCLUDES SV EQUIPMENT PLUS:

- Silver roof rails
- Power heated outside mirrors with LED turn signal indicators
- Power liftgate
- HomeLink® Universal Transceiver
- Auto-dimming rearview mirror
- Driver's seat and outside mirrors position memory
- Leather-appointed seats
- Heated front seats
- Adjustable ambient interior lighting
- Premium Bose® Audio System with AM/FM/CD and 11 speakers, including dual subwoofers
- Blind Spot Warning (BSW)
- Rear Cross Traffic Alert (RCTA)
- Around View® Monitor<sup>5</sup>
- Moving Object Detection (MOD)
- Driver Attention Alert (DAA)

### KEY AVAILABLE PACKAGE:

- Technology Package



**PLATINUM**

### INCLUDES SL EQUIPMENT PLUS:

- 20" Machine-finished aluminum-alloy wheels
- LED headlights
- Climate-controlled front seats (heated and cooled)
- Heated rear seats
- Power-return rear seatbacks
- Heated steering wheel
- Power-tilt and power-telescoping steering column with memory position

### KEY AVAILABLE PACKAGE:

- Technology Package



## HYBRID (LATE AVAILABILITY)

**SL OR PLATINUM**

### INCLUDES SL OR PLATINUM EQUIPMENT PLUS:

- 250-hp, 2.5-liter 4-cylinder SuperCharged engine and electric motor utilizing Intelligent Dual Clutch System and lithium-ion battery
- In-dash hybrid mode meter
- Eco Mode and electric power gauges
- Idle stop system
- Exterior hybrid badges

### KEY AVAILABLE PACKAGE:

- Technology Package



Images may show additional available equipment. <sup>1</sup>Driving is serious business. Only use features when safe to do so. App availability is dependent upon vehicle model, trim level, packaging, and/or options. See [NissanUSA.com/connect](http://NissanUSA.com/connect) for complete app availability details. Never program while driving. GPS mapping may not be detailed in all areas or reflect current road status. Compatible smartphone required. Cellular network and GPS signals not available in all areas and/or at all times. Technology is evolving, and changes by independent companies are not within Nissan's control. Nissan is not responsible for associated costs that may be required for continued operation due to cellular network termination (including equipment upgrades, if available, or roaming charges on alternative networks) or other third party changes. Should a third party provider terminate/restrict service, service may be terminated without notice and with no liability to Nissan and its agents or affiliates. Subscription Agreement required and terms and conditions of Subscription Agreement apply. See [NissanUSA.com/connect](http://NissanUSA.com/connect) for details. Thirty-six (36) month trial period begins on your date of vehicle purchase or lease of a new Nissan; subsequently a paid subscription is required (excluding Pandora® if Pandora® app via NissanConnect™ is equipped on vehicle) at the then current rate to continue to receive services. Text rates and/or data usage may apply. <sup>2</sup>Use the text messaging feature after stopping your vehicle in a safe location. If you have to use the feature while driving, exercise extreme caution at all times so full attention may be given to vehicle operation. Compatible smartphone required. Text rates and/or

data usage may apply. <sup>3</sup>Availability of specific features is dependent upon the phone's Bluetooth® support. Please refer to your phone Owner's Manual for details. Bluetooth® word mark and logos are owned by Bluetooth SIG, Inc. and any use of such marks by Nissan is under license. See [NissanUSA.com/bluetooth](http://NissanUSA.com/bluetooth) for details. <sup>4</sup>Required monthly subscriptions sold separately for each available SiriusXM feature after trial period, and are continuous until you call SiriusXM to cancel. Installation costs, one-time activation fee, other fees and taxes will apply. Each SiriusXM feature availability is dependent upon vehicle model, trim level, packaging, and/or options, and may only be available in select markets. Satellite Radio U.S. service, NavWeather® service, and SiriusXM Travel Link® services (if any of the foregoing features are equipped on vehicle) available only to those 18 or older in the 48 contiguous states and D.C. Fees and programming subject to change. Subscriptions governed by Customer Agreement available at [siriusxm.com](http://siriusxm.com). ©2015 Sirius XM Radio Inc. Sirius® XM® and all related marks and logos are trademarks of Sirius XM Radio Inc. <sup>5</sup>Parking aid/convenience feature. Cannot completely eliminate blind spots. May not detect every object and does not warn of moving objects. Always check surroundings and turn to look behind you before moving vehicle. Bose® is a registered trademark of The Bose Corporation. HomeLink® is a registered trademark of Gentex Corporation. iPod® is a registered trademark of Apple, Inc. All rights reserved. iPod® or other external device not included.

CHOOSE YOUR PACKAGE



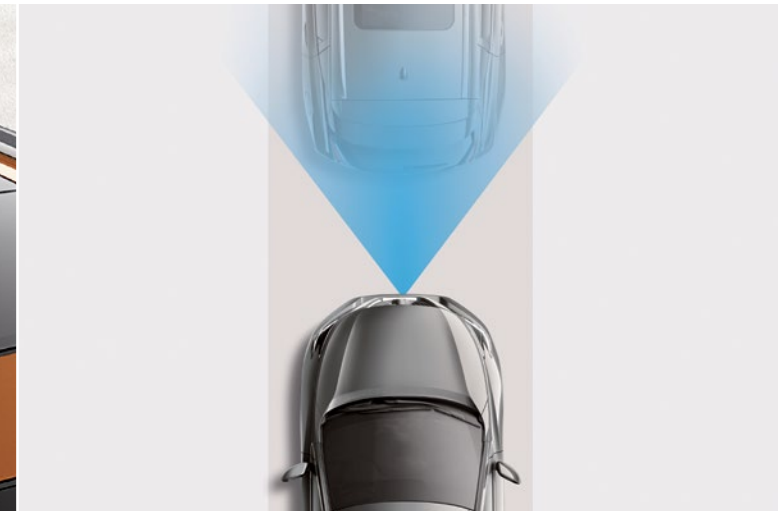
**S** NAVIGATION PACKAGE:

- NissanConnect<sup>SM</sup> with Navigation with 8.0" multi-touch control color monitor and Voice Recognition for audio and navigation<sup>1</sup>
- SiriusXM<sup>®</sup> Traffic and Travel Link<sup>®2</sup>
- HD Radio<sup>®</sup>
- Rear passenger USB connection port for iPod<sup>®</sup> interface and other compatible devices



**SV** PREMIUM PACKAGE:

- Power Panoramic Moonroof with one-touch open/close
- Premium Bose<sup>®</sup> Audio System with AM/FM/CD and 11 speakers, including dual subwoofers



**SL, PLATINUM, SL HYBRID<sup>3</sup> AND PLATINUM HYBRID<sup>3</sup>** TECHNOLOGY PACKAGE:

- Power Panoramic Moonroof with one-touch open/close
- Intelligent Cruise Control (ICC)<sup>4</sup>
- Forward Emergency Braking (FEB)<sup>5, 6</sup>
- Predictive Forward Collision Warning (PFCW)<sup>7</sup>

Some Images may show additional available equipment. <sup>1</sup>Never program while driving. GPS mapping may not be detailed in all areas or reflect current road status. <sup>2</sup>Required monthly subscriptions sold separately for each available SiriusXM feature after trial period, and are continuous until you call SiriusXM to cancel. Installation costs, one-time activation fee, other fees and taxes will apply. Each SiriusXM feature availability is dependent upon vehicle model, trim level, packaging, and/or options, and may only be available in select markets. Satellite Radio U.S. service, NavWeather<sup>®</sup> service, and SiriusXM Travel Link<sup>®</sup> services (if any of the foregoing features are equipped on vehicle) available only to those 18 or older in the 48 contiguous states and D.C. Fees and programming subject to change. Subscriptions governed by Customer Agreement available at [siriusxm.com](http://siriusxm.com). ©2015 Sirius XM Radio Inc. Sirius<sup>®</sup>, XM<sup>®</sup> and all related marks and logos are trademarks of Sirius XM Radio Inc. <sup>3</sup>Late availability. <sup>4</sup>Intelligent Cruise Control is not a collision avoidance system or warning device. Designed to use limited braking. Failure to apply the brakes could result in an accident. <sup>5</sup>FEB cannot prevent accidents due to carelessness or dangerous driving techniques. It may not provide warning or braking in certain conditions. Speed limitations apply. <sup>6</sup>FCW is intended to warn you before a collision occurs; it cannot prevent a collision. Speed and other limitations apply. See Owner's Manual for details. <sup>7</sup>PFCW is intended to warn you before a collision occurs; it cannot prevent a collision. Speed and other limitations apply. See Owner's Manual for details. Bose<sup>®</sup> is a registered trademark of The Bose Corporation. iPod<sup>®</sup> is a registered trademark of Apple, Inc. All rights reserved. iPod<sup>®</sup> or other external device not included.

CHOOSE YOUR ACCESSORIES



## EMBRACE THE ART OF ACCESSORIZING.

Every Genuine Nissan Accessory is custom-fit, custom-designed and durability-tested. Each one is backed by Nissan's 3-year/36,000-mile (whichever occurs first) limited warranty (if installed by dealer at the time of purchase),<sup>1</sup> and can be financed when installed by dealer at time of purchase.

- A. **Rear Cargo Cover and Cargo Net<sup>2</sup>**  
Keep it covered and keep it together. (Sold separately)
- B. **Illuminated Kick Plates and Interior Accent Lighting**  
For a grand entrance every time. (Sold separately)
- C. **Nissan 4G WiFi & Apps**  
Connected passengers are happy passengers.
- D. **Portable Cargo Organizer<sup>2</sup>**  
Everything in its right place.
- E. **18" Aluminum-alloy Wheels**  
Style at first glance.
- F. **Remote Engine Start System<sup>3</sup>**  
Power in the palm of your hand.
- G. **All-season Floor Mats and Carpeted Floor Mats**  
Neither rain, sleet or snow will muck up your Murano.<sup>4</sup> (Sold separately)
- H. **Cargo Area Protector**  
Preserve and protect your cargo – and your Murano.<sup>4</sup>

### Additional Accessories:

- Roof Rail Crossbars<sup>2</sup>
- Hatch Tent
- Blind Zone Mirrors<sup>4</sup>
- Auto-dimming Rearview Mirror with HomeLink<sup>®</sup> and Compass
- Satin Chrome Rear Bumper Protector
- And More
- Carpeted Cargo Mat

<sup>1</sup>Genuine Nissan Accessories are covered by Nissan's Limited Warranty on Genuine Nissan Replacement Parts, Genuine NISMO<sup>®</sup> S-Tune Parts, and Genuine Nissan Accessories for the longer of 12 months/12,000 miles (whichever occurs first) or the remaining period under the 3-year/36,000-mile (whichever occurs first) Nissan New Vehicle Limited Warranty. Terms and conditions apply. See Warranty Information Booklet for details. <sup>2</sup>Cargo and load capacity limited by weight and distribution. Always secure all cargo. Heavy loading of the vehicle with cargo, especially on the roof, will affect the handling and stability of the vehicle. <sup>3</sup>State laws may apply; review local laws before using. <sup>4</sup>Blind Zone Mirrors are not a substitute for proper lane change procedures. May not display every vehicle or object around you. HomeLink<sup>®</sup> is a registered trademark of Gentex Corporation.

# GENUINE NISSAN ACCESSORIES

For more information and to shop online for Murano<sup>®</sup> Genuine Nissan Accessories, go to [bit.ly/16murano\\_estore](http://bit.ly/16murano_estore)



To see Genuine Nissan Accessories in action, go to [bit.ly/16murano\\_gnavideos](http://bit.ly/16murano_gnavideos)

Nissan Murano<sup>®</sup> Platinum AWD shown in Pacific Sunset with 20" Aluminum-alloy Wheels, Roof Rail Crossbars,<sup>2</sup> Splash Guards, Tow Hitch Receiver, Hitch Ball Mount, and Hitch Ball.



## SPECIFICATIONS

Engine	S <sup>1</sup>	SV	SL	Platinum
VQ35DE – 3.5-liter DOHC 24-valve V6 engine	■	■	■	■
– Horsepower – 260 hp @ 6,000 rpm				
– Torque – 240 lb-ft @ 4,400 rpm				
– Emissions – Tier 2-Bin 5 (Fed); LEV2-ULEV (CA)				
QR25DER – 2.5-liter DOHC 16-valve 4-cylinder SuperCharged engine and electric motor utilizing Intelligent Dual Clutch System and lithium-ion battery			■ <sup>2</sup>	■ <sup>2</sup>
– Hybrid System Net Power – 250 hp				
– Engine Horsepower – 230 hp @ 5,600 rpm				
– Engine Torque – 243 @ 3,600 rpm				
– Electric Motor Power – 15 kW				
– Emissions – LEV2 ULEV				
Continuously Variable Valve Timing Control System (CVTCS) on intake valves	■	■	■	■
Nissan Direct Ignition System	■	■	■	■
Double-tipped iridium spark plugs	■	■	■	■
Electronic drive-by-wire throttle	■	■	■	■
Eco mode			■ <sup>2</sup>	■ <sup>2</sup>
Idle stop system			■ <sup>2</sup>	■ <sup>2</sup>

### Drivetrain

Front-Wheel Drive (FWD)	■	■	■	■
Intuitive All-Wheel Drive (AWD)	□	□	□	□
Hill start assist	■	■	■	■
Xtronic CVT® (Continuously Variable Transmission)	■	■	■	■

### Brakes

4-wheel vented disc brakes	■	■	■	■
4-wheel Anti-Lock Braking System (ABS) – G-sensor on AWD models	■	■	■	■
Electronic Brake force Distribution (EBD)	■	■	■	■
Brake Assist (BA)	■	■	■	■

### Suspension/Chassis Bracing/Steering

Independent strut front suspension	■	■	■	■
Multi-link independent rear suspension	■	■	■	■
Front and rear stabilizer bars	■	■	■	■
Vehicle-speed-sensitive power steering	■	■	■	■

### Wheels/Tires

18" x 7.5" Machine-finished split 5-spoke aluminum-alloy wheels	■	■	■	■
20" x 7.5" Machine-finished aluminum-alloy wheels				■
P235/65R18 all-season tires	■	■	■	■
P235/55R20 all-season tires				■

### Exterior Features

LED Daytime Running Lights	■	■	■	■
LED headlights				■
Automatic on/off headlights	■	■	■	■
Fog lights		■	■	■
LED taillights	■	■	■	■
Black roof rails			■	■
Silver roof rails			■	■

■ Standard	■ <sup>N</sup> Navigation Package	■ <sup>T</sup> Technology Package
□ Optional	■ <sup>P</sup> Premium Package	

Exterior Features (continued)	S <sup>1</sup>	SV	SL	Platinum
Power Panoramic Moonroof with one-touch open/close		■ <sup>P</sup>	■ <sup>T</sup>	■ <sup>T</sup>
Power outside mirrors with LED turn signal indicators	■	■		
Power heated outside mirrors with LED turn signal indicators			■	■

### Comfort/Convenience

Power liftgate			■	■
Rear privacy glass	■	■	■	■
Advanced Drive-Assist® Display with 7.0" color display	■	■	■	■
NissanConnect <sup>SM</sup> with Navigation with 8.0" multi-touch control color monitor and Voice Recognition for audio and navigation <sup>3</sup>	■ <sup>N</sup>	■	■	■
SiriusXM® Traffic and Travel Link <sup>®4</sup>	■ <sup>N</sup>	■	■	■
NissanConnect <sup>SM</sup> with Mobile Apps <sup>3</sup>	■	■	■	■
Hands-free text messaging assistant <sup>5</sup>	■	■	■	■
Bluetooth® Hands-free Phone System <sup>6</sup>	■	■	■	■
RearView Monitor	■	■	■	■
Around View® Monitor			■	■
Fine Vision electroluminescent gauges	■	■	■	■
Dual Zone Automatic Temperature Control (ATC) with in-cabin microfilter	■	■	■	■
Rear passenger air conditioning vents	■	■	■	■
HomeLink® Universal Transceiver			■	■
Driver's seat and outside mirrors position memory			■	■
Steering-wheel position memory			■	■
Driver Attention Alert (DAA)			■	■
Intelligent Cruise Control (ICC)			■ <sup>T</sup>	■ <sup>T</sup>
Nissan Intelligent Key® with Push Button Ignition	■	■	■	■
Remote Engine Start System with Intelligent Climate Control	■	■	■	■
Power windows with front one-touch auto-up/down	■	■	■	■
Power door locks with auto-locking feature	■	■	■	■
Remote front windows down	■	■	■	■
Tilt and telescoping steering column	■	■	■	■
Power-tilt and power-telescoping steering column	■	■	■	■
Variable intermittent windshield wipers	■	■	■	■
Vehicle speed-sensing variable intermittent windshield wipers	■	■	■	■
Intermittent rear window wiper	■	■	■	■
Auto-dimming rearview mirror	■	■	■	■
12-volt DC power outlets (three)	■	■	■	■
Adjustable ambient interior lighting	■	■	■	■

### Seating/Appointments

6-way manual driver's seat	■	■	■	■
8-way power driver's seat		■	■	■
Driver's seat power lumbar support		■	■	■
4-way manual front-passenger's seat	■	■	■	■
4-way power front-passenger's seat		■	■	■
Climate-controlled front seats (heated and cooled)		■	■	■
Heated front seats		■	■	■
Heated rear seats		■	■	■
60/40 Split fold-down rear seatbacks with cargo area-accessible levers	■	■	■	■

Seating/Appointments (continued)	S <sup>1</sup>	SV	SL	Platinum
Power return rear seatbacks				■
Reclining rear seatbacks with center armrest	■	■	■	■
Cloth seat trim	■	■	■	■
Leather-appointed seats		■	■	■
Heated steering wheel		■	■	■
Leather-wrapped steering wheel		■	■	■
Leather-wrapped shift knob		■	■	■
Jasper Pearlescent or Brushed Silver tone trim	■	■	■	■

### Audio/Entertainment

AM/FM/CD audio system with six speakers	■	■	■	■
Bose® audio with 11 speakers, including dual subwoofers		■ <sup>P</sup>	■	■
MP3/WMA CD playback capability	■	■	■	■
Auxiliary audio input jack	■	■	■	■
Front USB connection port for iPod® interface and other compatible devices	■	■	■	■
Rear USB connection port for iPod® interface and other compatible devices	■ <sup>N</sup>	■	■	■
SiriusXM® Satellite Radio with 3-month trial subscription <sup>3</sup>	■	■	■	■
HD Radio®	■ <sup>N</sup>	■	■	■
Streaming audio via Bluetooth® wireless technology <sup>6</sup>	■	■	■	■

### Safety/Security

Nissan Advanced Air Bag System with dual-stage supplemental front air bags with seat-belt and occupant-classification sensors	■	■	■	■
Driver and front-passenger seat-mounted side-impact supplemental air bags	■	■	■	■
Roof-mounted curtain supplemental air bags for side-impact and rollover head protection for front and rear-seat outboard occupants	■	■	■	■
Driver supplemental knee air bag	■	■	■	■
Vehicle Dynamic Control (VDC) with Traction Control System (TCS)	■	■	■	■
Active Brake Limited Slip (ABLS)	■	■	■	■
Blind Spot Warning (BSW)		■	■	■
Rear Cross Traffic Alert (RCTA)		■	■	■
Moving Object Detection (MOD)		■	■	■
Predictive Forward Collision Warning (PFCW)		■	■ <sup>T</sup>	■ <sup>T</sup>
Forward Emergency Braking (FEB)		■	■ <sup>T</sup>	■ <sup>T</sup>
3-point ALR/ELR passenger seat belt system (ELR for driver)	■	■	■	■
Front-seat and three rear-seat head restraints	■	■	■	■
LATCH System (Lower Anchors and Tethers for CHildren)	■	■	■	■
High-strength steel side-door guard beams	■	■	■	■
Zone Body construction with front and rear crumple zones	■	■	■	■
Tire Pressure Monitoring System (TPMS) with individual tire pressure display and Easy-Fill Tire Alert	■	■	■	■
Vehicle Security System (VSS)	■	■	■	■
Nissan Vehicle Immobilizer System	■	■	■	■

## DIMENSIONS/CAPACITIES/MPG

Exterior Dimensions – Inches	
Wheelbase	111.2
Overall length	192.8
Overall width	75.4
Overall height	66.6
Track width (front/rear)	64.6/64.6

### Interior Dimensions (front/rear) – Inches

Head room	39.9/39.8
Head room with Dual Panel Moonroof	38.1/37.8
Leg room	40.5/38.7
Hip room	55.4/55.2
Shoulder room	59.5/58.8
Step-in height	15.8/15.1

### Capacities

Seating capacity	5
Interior passenger volume (front/rear)	
– Without Moonroof	55.7/52.4
– With Dual Panel Moonroof	53.1/49.7
Cargo volume with rear seat up (cu. ft.)	
– Without Moonroof/with Moonroof	32.1/31.1
Cargo volume with rear seat down (cu. ft.)	
– Without Moonroof/with Moonroof	67.0/65.0
Fuel tank (gals.)	19.0

### 2016 EPA Fuel Economy Estimates

City/Hwy/Combined MPG	V6	Hybrid
FWD	21/28/24	28/31/29 <sup>7</sup>
AWD	21/28/24	26/30/28 <sup>7</sup>

Actual mileage may vary with driving conditions – use for comparison only.

<sup>1</sup>Not available in Hybrid models. <sup>2</sup>Available in Hybrid models only. Late availability. <sup>3</sup>Driving is serious business. Only use features when safe to do so. App availability is dependent upon vehicle model, trim level, packaging, and/or options. See [NissanUSA.com/connect](http://NissanUSA.com/connect) for complete app availability details. Never program while driving. GPS mapping may not be detailed in all areas or reflect current road status. Compatible smartphone required. Cellular network and GPS signals not available in all areas and/or at all times. Technology is evolving, and changes by independent companies are not within Nissan's control. Nissan is not responsible for associated costs that may be required for continued operation due to cellular network termination (including equipment upgrades, if available, or roaming charges on alternative networks) or other third party changes. Should a third party provider terminate/restrict service, service may be terminated without notice and with no liability to Nissan and its agents or affiliates. Subscription Agreement required and terms and conditions of Subscription Agreement apply. See [NissanUSA.com/connect](http://NissanUSA.com/connect) for details. Thirty-six (36) month trial period begins on your date of vehicle purchase or lease of a new Nissan; subsequently a paid subscription is required (excluding Pandora® if Pandora® app via NissanConnect<sup>SM</sup> is equipped on vehicle) at the then current rate to continue to receive services. Text rates and/or data usage may apply. <sup>4</sup>Required monthly subscriptions sold separately for each available SiriusXM feature after trial period, and are continuous until you call SiriusXM to cancel. Installation costs, one-time activation fee, other fees and taxes will apply. Each SiriusXM feature availability is dependent upon vehicle model, trim level, packaging, and/or options, and may only be available in select markets. Satellite Radio U.S. service, NavWeather® service, and SiriusXM Travel Link® services (if any of the foregoing features are equipped on vehicle) available only to those 18 or older in the 48 contiguous states and D.C. Fees and programming subject to change. Subscriptions governed by Customer Agreement available at [siriusxm.com](http://siriusxm.com). ©2015 Sirius XM Radio Inc. Sirius, XM® and all related marks and logos are trademarks of Sirius XM Radio Inc. <sup>5</sup>Use the text messaging feature after stopping your vehicle in a safe location. If you have to use the feature while driving, exercise extreme caution at all times so full attention may be given to vehicle operation. Compatible smartphone required. Text rates and/or data usage may apply. <sup>6</sup>Availability of specific features is dependent upon the phone's Bluetooth® support. Please refer to your phone Owner's Manual for details. Bluetooth® word mark and logos are owned by Bluetooth SIG, Inc., and any use of such marks by Nissan is under license. See [NissanUSA.com/bluetooth](http://NissanUSA.com/bluetooth) for details. <sup>7</sup>Fuel economy based on Targeted 2016 EPA fuel economy estimates for 2016 Murano® Hybrid – EPA data not available at time of publication. Targeted 2016 fuel economy estimates based on Nissan internal testing results, subject to EPA confirmation. Actual mileage may vary with driving conditions – use for comparison only. Bose® is a registered trademark of The Bose Corporation. HD Radio® is a registered trademark of iBiquity Digital Corporation. HomeLink® is a registered trademark of Genetex Corporation. iPod® is a registered trademark of Apple, Inc. All rights reserved. iPod® or other external device not included. 1617519-N-12/15-50M-CGI

