

2006BUICKTERRAZA



BUICK.COM / 800.4.A.BUICK





THE QUALITY OF YOUR LIFE

Beautifully sculpted body panels that fit together with eye-

eye-pleasing precision. Quiet cabins that become a

sanctuary from the outside world. Fabrics and materials

that would feel perfectly at home in your home. Engines

so smooth you may have to check the tachometer to be

sure they're running. Suspensions that strike the elusive

balance between precise control and a comfortable

ride. Technology designed to help protect you and

your family before, during and even after a collision.

Craftsmanship you sense everywhere you turn. Can cars

have a level of quality that can actually improve the

quality of your life? Welcome to Terraza.

BUICK

P r e m i u m s t y l e . . . B u i c k ' s Q u i e t T u n i n g . . . s m o o t h c o n t r o l l e d r i d e



[PLATE 2] Terraza in Dark Garnet Metallic. Shown with available equipment.

Family utility vehicles have always stressed usefulness over beauty, cargo room over comfort, and seating capacity over style. Buick decided to set a new aesthetic standard — and created Terraza. Here is a seven-passenger family van with sophisticated lines that never shout “practicality.” A van with an impressive amount of cargo room — and the luxury of leather-appointed first- and

second-row seats with contrasting piping. A van with ingenious ways of stowing gear — and the calm of a cabin hushed by QuietTuning. A van with the power to take you where you want to go — and a premium suspension to smooth the way. Experience sophistication and refinement never before seen in a family van. Experience the aesthetic standard of Terraza.

TERRAZA: creating the premium crossover sport van





【 PLATE 5 】 Leather-appointed first- and second-row seats in Cashmere. Shown with available equipment.



QUIETTUNING

From its inception, Terraza was designed to achieve impressive levels of interior quietness. But our engineers wanted more. So they specified QuietTuning. It's a Buick-pioneered process that employs the following three strategies to transform Terraza's cabin into a sanctuary from the outside world.

A. REDUCE NOISE AT ITS SOURCE

Clearly, noise that's addressed at its source is noise that can't enter a vehicle and disturb its passengers. That's where our engineers began their quest for quiet. They analyzed *powertrain noise* coming from Terraza's engine and exhaust system, and found ways to make a significant reduction. They employed *acoustic damping* on the shock towers and air/fuel plenum. Finally, they addressed a source of noise most people might never consider. Tires rolling over pavement can create a surprising amount of noise, so our engineers specified *quiet-tread tires*. These tires have a rubber composition designed not only to provide good grip, but also to produce very little tread noise.

B. BLOCK THE NOISE PATH

Much of the noise that can't be eliminated at its source can be denied entry into the passenger compartment of a vehicle. To that end, our engineers studied the noise entering the interior of Terraza and found several ways to make a real difference. An *acoustic engine cover* absorbs a significant amount of engine noise before it gets near the passenger compartment. *Enhanced absorbers* on the hood and air/fuel plenum also contribute. *Enhanced insulators* are incorporated on the front fenders. *Denser, heavier acoustic material* is placed between the engine compartment and the passenger cabin. Plus *improved sealing techniques* reduce wind noise.

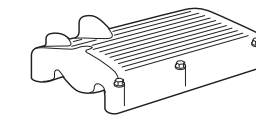
C. ABSORB NOISE IN THE CABIN

Despite all the efforts to deny its entry into the passenger compartment of Terraza, some noise manages to sneak in. Our engineers have an acoustic welcoming party waiting. Denser insulation at the front of the instrument panel and carpet help absorb sound. Special acoustic materials are strategically positioned behind interior trim and over the rear wheel houses to help absorb noise before it ever reaches the ears of Terraza's driver and passengers. The final result of QuietTuning is a peaceful calm that pervades the cabin of Terraza. You'll be amazed by what you don't hear.

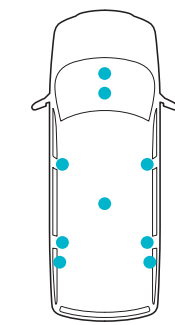
QuietTuning



A.



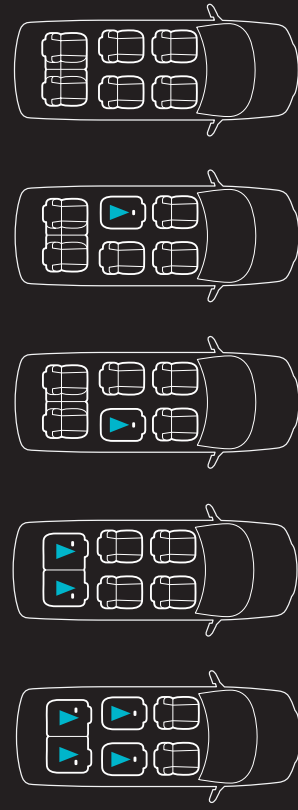
B.



C.

utility

A.



A. VERSATILE SEATING CONFIGURATIONS

Terraza can assume many different seating configurations to let you carry people and cargo just about any way you can imagine. Creating a flat-load floor is simple: With the available rear cargo convenience center in place, just fold down the second- and third-row seats and you've done it. The standard second-row captain's chair seats are easy to fold and remove. Plus, with the second- and third-row seats removed, you have over 136 cubic feet for cargo.

Cargo and load capacity limited by weight and distribution.

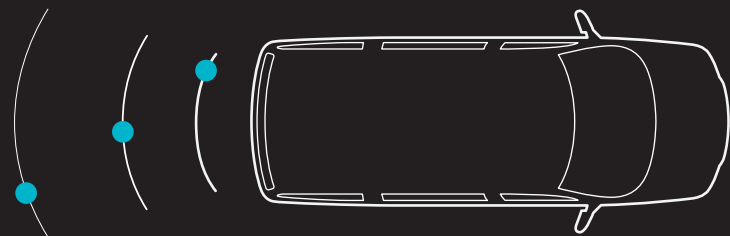
B. ONSTAR®

OnStar is a factory-installed safety and security system that helps keep you protected and connected on the road. Using global positioning satellites to locate your vehicle, a live, specially trained Advisor is there to help you with something as major as an air bag deployment or as minor as a lockout. With OnStar, you have access to OnStar Hands-Free Calling, a voice-activated calling feature, so you can stay better connected on the road. If your air bags deploy, OnStar receives a signal and will try to contact you to see if you need help. If you need emergency assistance, OnStar will contact a nearby emergency service provider with your request for help. If you have a flat, are out of gas, or need a tow, an Advisor is ready to help there too. OnStar can also work with police to attempt to locate your vehicle if it's stolen, in most cases send a signal to unlock your doors if you're locked out, or run GM® Goodwrench® remote diagnostics if your Check Engine light comes on. With OnStar, you'll have peace of mind knowing you've done all you can to protect your family and prepare for whatever comes down the road.

OnStar Hands-Free Calling (HFC) requires an HFC-enabled vehicle, existing OnStar service contract and prepaid calling minutes, and is not available in Alaska and some other markets. Calls may be made to the U.S. and Canada only. OnStar voice recognition system may not work with some voices.

OnStar services require vehicle electrical system (including battery), wireless service and GPS satellite signals to be available and operating for features to function properly. OnStar acts as a link to existing emergency service providers. Subscription Service Agreement required. Call 1-888-4ONSTAR (1-888-466-7827) or visit onstar.com for OnStar's Terms and Conditions, Privacy Policy and system limitations and details.

C.



C. ULTRASONIC REAR PARKING ASSIST

Nuclear submarine technology surfaces in your driveway. When you shift into reverse gear, sonar waves are sent out from four ultrasonic transmitter/receivers built into the rear bumper. If a parked vehicle, or a stationary object at least ten inches high, is detected in your intended path, the sonar waves will bounce off the obstacle and back to the sensors in the bumper. The sensors will activate both an audio warning signal and warning lights if you are nearing an obstacle while backing up at low speed. The closer you get to the object, the more intrusive the alarms and lights become. Ultrasonic rear parking assist is available on every Terraza.

D. REMOTE VEHICLE START

With Terraza's available remote starting system, you'll never again have to endure a stiflingly hot van in the summer or a bone chillingly cold van in the winter. You can start your vehicle from up to 180 feet away by simply pushing a touch pad on the remote keyless entry. As the engine starts running, the heating-ventilation-air conditioning system (HVAC) heats or cools as necessary, according to the heat/air conditioning settings on the instrument panel. The rear defogger is also turned on if the outside temperature is below 45°F. The system has many built-in safeguards to help prevent theft and unauthorized or unexpected use.

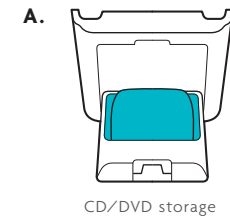
[PLATE 7] Terraza instrument panel. Expert craftsmanship is evident in the look of every gauge, the touch of every switch, the fit of every component. Shown with available equipment.



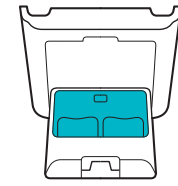


【 PLATE 8 】 Terraza CXL in Ming Blue Metallic. Shown with available equipment.

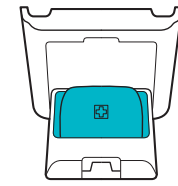
[PLATE 9] Overhead rail storage system — lighting, climate control, entertainment and flexible storage neatly integrated into one unit. Shown with available equipment.



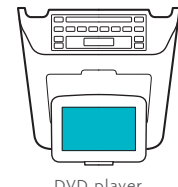
CD/DVD storage



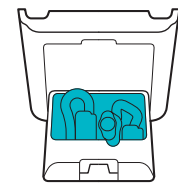
Sunglasses storage



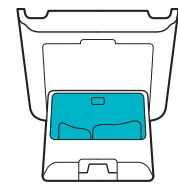
First-aid kit



DVD player



Flexible flashlights



Cell phone/PDA storage

A. DVD ENTERTAINMENT/ OVERHEAD RAIL STORAGE SYSTEM

The rear seat entertainment system that is standard on every Terraza includes a DVD player with a seven-inch, flip-down, wide format LCD screen for second- and third-seat viewing. It can play studio-quality audio/video in CD-audio, MP3 and DVD formats, has inputs for video games and camcorders, and comes with two pairs of dual-channel headphones and a wireless remote control. It's all housed in an innovative rail storage system in the roof of Terraza. This overhead rail system can neatly integrate the available rear audio and climate controls into the DVD entertainment unit. A snap-in storage module that flips open is standard, and comes with an insert for holding sunglasses.

Two additional modules that come with a CD/DVD holder and a first-aid kit insert are standard on CXL and available on CX. Dealer-installed accessory modules are available to keep things like a cell phone and even a pair of SnakeLight® flexible flashlights up and out of the way. Inserts and modules are also available separately. In addition, the overhead rail system is ready to house the incredible PhatNoise® digital media player that's available on Terraza. The amazing PhatNoise story starts just three columns to the right.

B. GPS/DVD NAVIGATION SYSTEM

Imagine your Terraza reading the signals coming from at least three global positioning satellites in high earth orbit, and using those signals to compute your exact position on the planet, give or take a few feet. Now imagine that data being fed into a sophisticated DVD-based navigation program that can show you exactly where you are on a virtual map sent to a screen on the instrument panel. That's what Terraza's available GPS/DVD navigation program can do. The system can also suggest best routes to your destination, as well as the locations of gas stations, restaurants and points of interest along the way. (Late availability.)

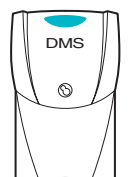
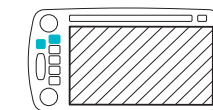
C. XM® SATELLITE RADIO

Hovering in geosynchronous earth orbit, XM satellites beam down over 150 channels of clear, digital-quality sound into your Terraza. Over 800 terrestrial repeaters fill in the signal whenever the line of sight with a satellite is lost. XM delivers 67 channels of 100% commercial-free music, plus the best in news, sports, talk, comedy and XM Instant Traffic & Weather. And you can receive the signal in all 48 coast-to-coast states. That's the attraction of XM. And that's why it's available on Terraza. Plus, now you get three trial months of service with factory-installed XM without any contract or obligation.

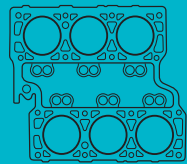
XM is available only in the 48 contiguous United States. Service fees extra. Visit gm.xmradio.com for details.

D. PHATNOISE

You can turn Terraza into a state of the art entertainment venue. Simply order it with available PhatNoise. What in the world is PhatNoise? It starts with a 40-gigabyte portable hard drive cartridge that mounts into the overhead rail storage system adjacent to the DVD player. It's easily removable, and can be connected to a home PC for copying or downloading computer files. Installed in Terraza, PhatNoise can store and play up to 10,000 songs in MP3, WMA or WAV formats, or store and play 40 movies in MPEG format, or store and play a combination of the two, like 7,000 songs and 30 movies. It can provide the software for playing a video game, or a voice-browsing interface that provides a spoken, alphabetical list of stored songs by artist, album or music genre. It also allows simultaneous listening to two sources, like music for the front row and a DVD movie for the back rows, or listening to books, magazine or newspaper articles recorded on a PC from a subscription service, or downloading digital camera images during a trip, storing them and playing them back on the DVD screen. PhatNoise is the ideal digital media system for the highly mobile 21st century family.



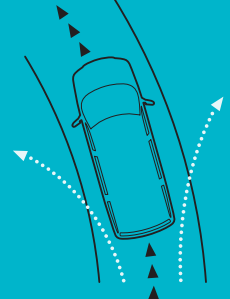
A.



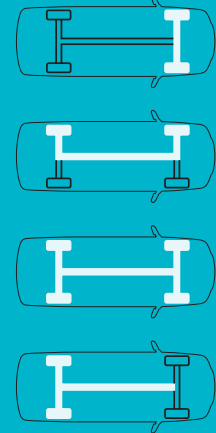
B.



C.



D.



A. 3.9L VVT V6 ENGINE

Terraza's available 3900 engine is refined and designed to impress in several different ways. *Performance.* Thanks to its large 3.9L displacement and sequential port fuel injection system, smooth power and responsiveness will be immediately discernable. It delivers 235 hp and 239 lb-ft of torque. The use of fully variable valve timing (VVT) for both intake and exhaust provides outstanding fuel economy and emissions reduction. *Quiet operation.* A variable-length intake manifold and a forged steel crankshaft are just two of the many refinements made to ensure quiet performance with little vibration. *Quality, reliability, dependability (QRD).* Like Terraza itself, the 3900 was developed to achieve high levels of QRD. From cam bearings to rocker covers to a 32-bit powertrain control processor, literally hundreds of refinements were specified. (Late availability.)

B. FOUR-WHEEL FULLY INDEPENDENT SUSPENSION

Terraza's fully independent suspension is specifically engineered to optimize handling and stability while delivering the ride characteristics of a comfortable sedan. It includes an independent gas-pressurized MacPherson strut front suspension with stabilizer bars and a new hydroformed, four-point isolated engine cradle that reduces noise and vibration. The independent rear suspension employs aluminum short and long control arms to improve stability, particularly when cornering over rough pavement. The use of coil springs with specially tuned self-leveling monotube gas-pressure shocks provides significantly better wheel control and road isolation than is possible with conventional twin-tube shock absorbers. An available all-wheel drive (AWD) Terraza has the same basic rear suspension, but with a rear-drive module that integrates suspension and propulsion functions into one compact unit that avoids encroaching on the low, flat cargo compartment.

C. STABILITRAK®—STABILITY CONTROL SYSTEM

Terraza's standard front-wheel drive chassis stability control system, StabiliTrak, uses data from many sensors to help you stay on your intended course. Yaw sensors, lateral accelerometers, steering wheel angle sensors, and wheel-speed sensors all send their data to the powertrain control module (PCM) and electronic control module (ECM) computers. These computers are constantly comparing the actual path the vehicle is taking with the path in which the driver is steering. StabiliTrak modulates individual front brakes or reduces power or both to help the driver maintain control and continue on the intended course. All this intervention can be so subtle you may never sense it's occurring.

D. FWD/AWD

Terraza can be ordered with front-wheel drive (FWD) or an advanced all-wheel drive (AWD) system that's available. This technologically innovative system uses front-wheel drive for ordinary driving conditions. But when slippery road surfaces are encountered, the AWD system automatically adds power to the rear wheels without perceptibly affecting comfort or handling. Inside the rear-drive module, twin pumps react to any difference in the rotational speed of the front and rear wheels. If one of the front wheels begins to slip, the rear-mounted gerotor units pressurize fluid to engage clutches that redirect torque to one or both rear wheels. This helps the rear wheels to smoothly and seamlessly provide traction, which allows Terraza to keep moving despite muddy, snowy or slippery road surfaces. Even if both front wheels and one rear wheel are slipping, power can be directed to the other rear wheel. When the system detects that the front wheels have regained good traction, it switches back into front-wheel drive mode.



[PLATE 12] Ingenious seat-back storage behind first- and second-row seats is ready to store headphones, CDs, etc.



[PLATE 14] Adjust the audio system or activate the cruise control with the available steering wheel controls.



[PLATE 11] Available dealer-installed Sit-N-Lift™ is a fully motorized, rotating lift-and-lower passenger seat to help people enter and exit more easily.



[PLATE 13] This available rear cargo convenience center provides spacious, flexible storage.



[PLATE 15] Terraza's instrument panel has the refined look of Burl wood tones with bright chrome accents. Shown with available equipment.



【 PLATE 16 】 Leather-appointed first- and second-row seats in Cashmere. Shown with available equipment.

Quietly, Buick has taken its place among the world leaders in quality on some important measures. We've been recognized by industry experts. Our higher standards have been noted throughout the automotive press. Some of our key assembly plants have won prominent awards. But we know that the difference between a car you like and a car you love isn't only about quality design and construction. It's also about a quality driving experience.

That's why, beginning with our 2006 models, every Buick we craft will come with these premium amenities:

- QuietTuning — a Buick-pioneered process that's designed to help reduce noise at its source, block the noise path and absorb noise. All to transform the cabin into a sanctuary from the outside world.
- OnStar* — a safety and security system that helps keep you protected and connected on the road. From a minor inconvenience to a major collision, a live, trained Advisor is there to help.
- A new 4 year/50,000 mile vehicle warranty** — premium coverage that is solid evidence of how confident we are in the quality of the design, engineering, assembly and craftsmanship of our vehicles.

For enhanced control on the road, every Buick model will offer either StabiliTrak — Stability Control System, or all-wheel drive. Some models will offer both.

And that's only the beginning. Our commitment to quality will continue to permeate every aspect of the creation of our vehicles. Every year. Every discipline. Every Buick. That's our commitment to you.

*Visit onstar.com or call 1-888-4ONSTAR (1-888-466-7827) for system limitations and details.

**Whichever comes first. Limited warranty. See dealer for details.

The special rewards of driving a Buick





Frost White (50)
Interior: Cashmere
Gray



Sandstone Metallic (53)
Interior: Cashmere



Platinum Metallic (67)
Interior: Gray



Emerald Green Metallic (38)
Interior: Cashmere



Ming Blue Metallic (25)
Interior: Cashmere
Gray



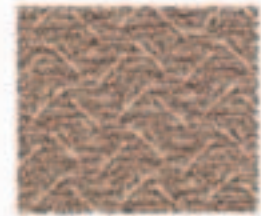
Cashmere Metallic (15)
Interior: Cashmere



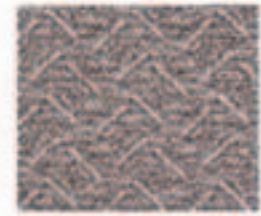
Slatestone Metallic (46)
Interior: Cashmere
Gray



Dark Garnet Metallic (49)
Interior: Cashmere
Gray



Cashmere Cloth Trim



Gray Cloth Trim



Cashmere Leather Trim



Gray Leather Trim



17" Deluxe Wheelcover



17" Aluminum Wheel



17" Chrome-Tech Aluminum Wheel

| INTERIOR FEATURES | CX | CXL |
|--|----|-----|
| S Standard A Available — Not available | | |
| Air bags — driver and front passenger, frontal dual-stage inflation with right-front passenger sensing | S | S |
| — driver, front- and second-row passenger, seat-mounted side-impact dual-stage inflation | A | S |
| Air conditioning — dual-zone climate control | S | S |
| — auxiliary rear, includes heater and rear-seat fan and temperature controls | A | S |
| Audio systems — ETR AM/FM stereo with seek/scan, digital clock, RDS display, Theftlock® CD/MP3 player and equalizer, auto tone control and speed-compensated volume | S | S |
| — ETR AM/FM stereo with in-dash six-disc CD/MP3 player and equalizer, seek/scan, digital clock, RDS display, Theftlock, auto tone control and speed-compensated volume | A | A |
| — ETR AM/FM stereo with touch-screen GPS/DVD navigation system, seek/scan, digital clock, RDS display, Theftlock, CD, auto tone control and speed-compensated volume (late availability) | — | A |
| — eight-speaker extended range sound system | S | S |
| — XM® Satellite Radio (activation and service fees extra; not available in Alaska or Hawaii) | A | A |
| Cargo Convenience Center — rear, removable four compartment cargo organizer | A | S |
| Carpet savers — front, second- and third-rows (include contrasting edge on CXL) | S | S |
| Child seat anchors — upper and lower LATCH system for compatible child safety seats | S | S |
| Child security door locks — rear doors | S | S |
| Comfort and Convenience Package — includes auxiliary rear air conditioning, Universal Home Remote, power passenger-side sliding door, power rear quarter vent windows and cargo convenience center with net | A | S |
| Cruise control | S | S |
| Driver Confidence Package — includes ultrasonic rear parking assist, theft-deterrent system with alarm and power driver-side sliding door | A | A |
| Driver Information Center — displays messages for up to 56 different vehicle functions including trip computer and compass | S | S |
| DVD entertainment system — overhead mounted, includes two infrared headphones and remote control | S | S |
| Headphones — infrared, two additional | A | A |
| Instrumentation — full analog cluster with fuel, temperature, tachometer and speedometer | S | S |
| Lights — front and rear reading/courtesy and cargo area, includes theater dimming feature | S | S |
| OnStar® — includes one-year Safe & Sound Plan* | S | S |

| INTERIOR FEATURES (continued) | CX | CXL |
|---|----|-----|
| Overhead modular storage system — sunglasses insert | S | S |
| — CD/DVD storage and first-aid kit (dealer-installed accessory) | A | S |
| PASS-Key®III — passive theft-deterrent system | S | S |
| PhatNoise® — digital media storage system located in overhead modular storage system | A | A |
| Power door locks — include lockout protection, delayed locking and memory feature | S | S |
| Power outlet — 115-volt, located in rear cargo area | — | S |
| Power windows — include driver with express-down and front passenger | S | S |
| — rear quarter vent | A | S |
| QuietTuning™ | S | S |
| Rear window defogger — electric | S | S |
| Remote keyless entry — includes instant alarm, perimeter lighting and security feedback | S | S |
| Remote vehicle starter system — key fob activated | A | A |
| Retained accessory power — allows accessories to be operated for 10 minutes or until a door is opened | S | S |
| Safety belts — lap and shoulder belts for all seating positions | S | S |
| Seats — leather-appointed with cloth inserts (first and second rows) | S | — |
| — leather-appointed (first and second rows) | — | S |
| — seven passenger seating; includes front reclining bucket seats, second-row reclining and folding captain's chairs and third-row 50/50 split-folding bench | S | S |
| — power seat adjuster six-way driver | S | — |
| — power seat adjuster six-way front passenger | A | — |
| — power seat adjuster eight-way driver and front passenger; includes memory driver seat | — | S |
| — heated front seats | — | A |
| — utility tray, folding with cup holders, located between first- and second-row seats | S | S |
| Steering wheel — leather-appointed with tilt feature; includes audio controls on CXL | S | S |
| Theft-deterrent system — includes alarm, starter interrupt and central unlocking feature | A | A |
| Universal Home Remote — programmable three-button function remote for garage door and more | A | S |
| Visors — covered with driver and passenger lighted vanity mirrors, includes extendable sunshade | S | S |

| EXTERIOR FEATURES | CX | CXL |
|--|----|-----|
| Deep-tinted glass — rear-side and tailgate | S | S |
| Headlamps — include daytime running lamps with Twilight Sentinel® | S | S |
| Mirrors — dual power, heated fold-away | S | S |
| Moldings — color-keyed with chrome insert | S | S |
| Power sliding door — passenger-side rear | A | S |
| — driver-side rear | A | A |

| EXTERIOR FEATURES (continued) | CX | CXL |
|--|----|-----|
| Roof rails — black | S | — |
| — brushed aluminum | — | S |
| Tires — P225/60R17 all-season blackwall steel-belted radial (P225/60R17 touring with AWD) | S | S |
| Ultrasonic rear parking assist | A | A |
| Wheels — 17" steel wheel with deluxe wheel cover | S | — |
| — 17" ten-spoke aluminum (included on CX with AWD) | A | S |
| — 17" ten-spoke Chrome-Tech aluminum | — | A |
| Wipers — front two-speed with variable delay | S | S |
| — rear intermittent wiper with washer | S | S |

| MECHANICAL FEATURES | CX | CXL |
|--|----|-----|
| Air compressor — onboard, includes inflator kit | S | S |
| Battery — with rundown protection | S | S |
| Brakes — four-wheel anti-lock disc | S | S |
| Drive type — front-wheel drive | S | S |
| — all-wheel drive, fully automatic on-demand system | A | A |
| Engine — 3.5L 3500 V6 | S | S |
| — 3.9L 3900 V6 (front-wheel drive only, late availability) | A | A |
| Engine block heater | A | A |
| StabiliTrak® — Stability Control System — automatic (not available with AWD) | S | S |
| Steering — power assisted rack-and-pinion | S | S |
| Suspension — four-wheel independent with front MacPherson struts and rear short- and long-arm design; includes rear automatic level control | S | S |
| Traction control — front-wheel drive models only | S | S |
| Transmission — four-speed electronically controlled automatic with overdrive | S | S |
| Trailer Towing Package — includes seven-lead wire harness, high-output alternator and heavy-duty engine cooling system. Does not include hitch receiver, draw bar, hitch pin and retainer clip, hitch ball, nut and cover. (These items may be ordered through your dealer.) | A | A |

*OnStar services require vehicle electrical system (including battery), wireless service and GPS satellite signals to be available and operating for features to function properly. OnStar acts as a link to existing emergency service providers. Subscription Service Agreement required. The U.S. Federal Communications Commission (FCC) ruled that wireless carriers will no longer be required to support the analog wireless network beginning in 2008. As of January 1, 2008, OnStar plans to offer service only through equipment that operates on the digital network which may require the purchase of a system upgrade for eligible vehicles. Call 1-888-4ONSTAR (1-888-466-7827) or visit onstar.com for OnStar's Terms and Conditions, Privacy Policy and system limitations and details.

| ENGINE | CX | CXL |
|--|----|-----|
| Type3.5L 3500 V6 | | |
| Horsepower | | |
| — front-wheel drive201 @ 5600 rpm | | |
| — all-wheel drive196 @ 5600 rpm | | |
| Torque | | |
| — front-wheel drive216 @ 4000 rpm | | |
| — all-wheel drive213 @ 3200 rpm | | |
| EPA estimated mpg, city/hwy | | |
| — front-wheel drive18/24 | | |
| — all-wheel drive17/23 | | |
| Type3.9L 3900 VVT V6 | | |
| Horsepower235 @ 5600 rpm | | |
| Torque239 @ 3200 rpm | | |
| EPA estimated mpg, city/hwy | | |
| — front-wheel drive (preliminary)17/22 | | |

| CAPACITIES | CX | CXL |
|--|----|-----|
| Cargo volume (cu. ft.)** | | |
| — third-row seats removed74.0 | | |
| Fuel tank (approx. gal.)25 | | |
| Base curb weight (lbs.) | | |
| — two-wheel drive4,470 | | |
| — all-wheel drive4,646 | | |
| Maximum trailer weight with available Trailer Towing Package (lbs.)† | | |
|3,500 | | |

| EXTERIOR DIMENSIONS (inches) | CX | CXL |
|----------------------------------|----|-----|
| — Wheelbase121.1 | | |
| — Length205.0 | | |
| — Width75.2 | | |
| — Height72.1 | | |
| — Front tread62.4 | | |
| — Rear tread62.6 | | |
| — Front step-in height17.3 | | |
| — Liftgate height74.0 | | |

| INTERIOR DIMENSIONS (inches) | CX | CXL |
|-------------------------------------|----|-----|
| — Legroom39.9/38.9/36.2 | | |
| — Headroom39.8/38.9/38.1 | | |
| — Shoulder room59.9/61.2/48.6 | | |
| — Hip room55.8/61.6/48.3 | | |

**Cargo and load capacity limited by weight and distribution.
†Maximum trailer weight ratings are calculated assuming a base vehicle, except for any options necessary to achieve the rating, plus driver. The weight of other optional equipment, passengers and cargo will reduce the maximum trailer weight your vehicle can tow. See your dealer for additional details.

IMPORTANT WORDS ABOUT THIS BROCHURE.

We have tried to make this brochure comprehensive and factual. We reserve the right, however, to make changes at any time, without notice, in prices, colors, materials, equipment, specifications, models, and availability. Specifications, dimensions, measurements, ratings and other numbers in this brochure and other printed materials provided at the dealership or affixed to vehicles are approximates based upon design and engineering drawings and prototypes and laboratory tests. Your vehicle may differ due to variations in manufacture and equipment. Since some information may have been updated since the time of printing, please check with your Buick dealer for complete details. Buick reserves the right to lengthen or shorten the model year for any product for any reason, or to start and end model years at different times.

New Vehicle Limited Warranty. This warranty is for GM vehicles registered in the USA. See your Buick dealer for terms and conditions. **Covered for 4 years/50,000 miles (whichever comes first):** The complete vehicle • Tires • Towing to your nearest Buick dealership • Cosmetic corrosion resulting from defects • Repairs made to correct any vehicle defect • No charge for most warranty repairs. **Covered for 6 years/100,000 miles (whichever comes first):** Rust-through corrosion

Corrosion Protection. Buick vehicles are designed and built to resist corrosion. All body and sheet metal components are warranted against rust-through corrosion for six years or 100,000 miles, whichever comes first. Application of additional rust-inhibiting materials is not required under the corrosion coverage and none is recommended. See your Buick dealer for terms of this limited warranty.

An Important Note About Alterations and Warranties. Installations or alterations to the original equipment vehicle (or chassis) as distributed by General Motors are not covered by the General Motors New Vehicle Limited Warranty. The special body company, assembler, equipment installer or upfitter is solely responsible for warranties on the body or equipment and any alterations (or any effect of the alterations) to any of the parts, components, systems or assemblies installed by GM. General Motors is not responsible for the safety or quality of design features, materials or workmanship of any alterations by such suppliers.

Updated Service Information. Buick dealers receive useful service bulletins about Buick products. You may purchase them from Helm Incorporated by calling 1-800-551-4123 or by visiting www.helminc.com.

Assembly. Buick vehicles and their components are assembled or produced by different operating units of General Motors, its subsidiaries or suppliers to GM worldwide. We sometimes find it necessary to produce Buick vehicles with different or differently sourced components than originally scheduled. Since some options may be unavailable when your vehicle is assembled, we suggest that you verify that your vehicle includes the equipment you ordered or, if there are changes, that they are acceptable to you.

Engines. Buick products are equipped with engines produced by GM Powertrain or other suppliers to GM worldwide. The engines in Buick products may also be used in other GM makes and models.

A Note About Child Safety. Always use safety belts and proper child restraints, even in vehicles equipped with air bags. Even with the Passenger Sensing System, children are safer when properly secured in a rear seat. Never place a rear-facing infant restraint in the front seat of any vehicle equipped with an active air bag. See your vehicle Owner's Manual and child safety seat instructions for more information.

ENHANCE YOUR OWNERSHIP EXPERIENCE. The Owner Center at My GMLink is a free online service that helps you make the most of your vehicle ownership.

- Sign up for e-mail reminders about service visits
 - Keep an online history of services performed
 - Read your Owner's Manual, warranty, and more, online
 - Receive the recall notices that apply only to your vehicle
 - Watch do-it-yourself videos and much more
- Register today at MYGMLink.com!

GM, the GM Logo, Buick, the Buick Logo, OnStar, the OnStar Emblem, QuietTuning and the slogans, emblems, vehicle model names, vehicle body designs and other marks appearing in this brochure are the trademarks and/or service marks of General Motors Corporation, its subsidiaries, affiliates or licensors. The XM name and related logos are registered trademarks of XM Satellite Radio, Inc.

©2005 General Motors Corporation. All rights reserved.

Printed on recyclable paper from a renewable source.

Ident. No. 06-TZ-001

Printed in U.S.A. 150m

