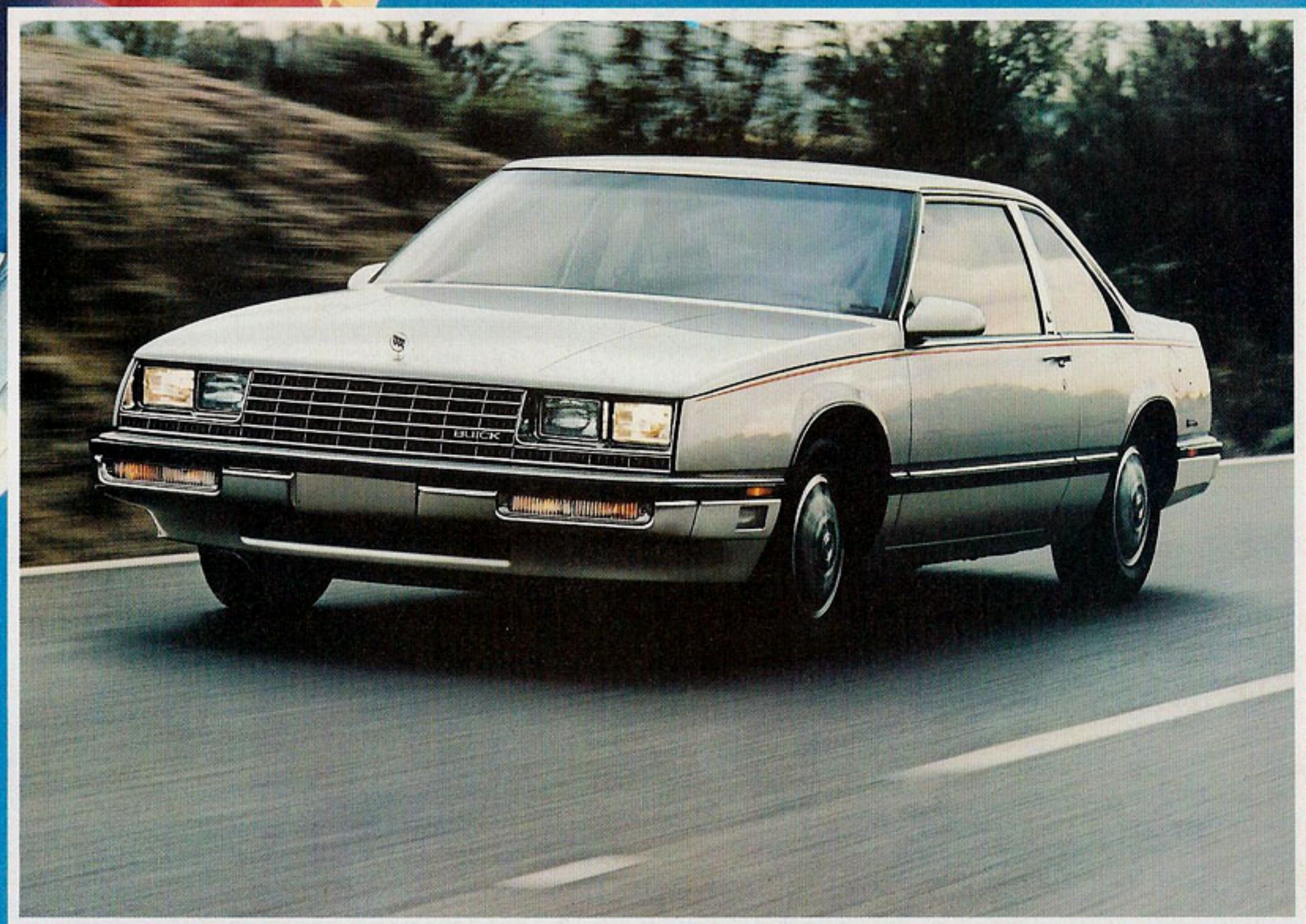


# LeSABRE

BUICK 1986









## LeSABRE

For 1986, the completely new Buick LeSabre brings the innovations of front-wheel drive, transverse-mounted V-6 engines and aerodynamic styling to a line of automobiles with a large following among those who prize traditional value and comfort in a powerful, spacious road car. Like its predecessor, the 1986 LeSabre serves with equal facility as family transportation, as a personal car, or as an automobile highly suitable for business. The LeSabre is available in two series, the Custom and the luxurious Limited.

Just as Buick engineers achieved exterior dimensional reductions in the new-generation Electra, design sophistication has produced a LeSabre that is shorter, more aerodynamic, and more modern in appearance while retaining the feel of six-passenger roominess enjoyed by previous LeSabre owners. The LeSabre ride quality is retained—and enhanced—through the use of MacPherson strut front suspension and fully independent rear suspension with coil springs. This advanced design allows the car to take even sub-standard road surfaces in its stride, all the while maintaining Buick's rigorously applied high standard of passenger comfort.

The standard power unit for the new LeSabre is a 3.0-litre V-6 with multi-port fuel injection, an engine that moves the car responsibly at highway speeds and responsively in tight traffic situations. For LeSabre drivers who want the ultimate in naturally aspirated Buick power, the available 3.8-litre V-6 with sequential-port fuel injection for improved responsiveness, and with roller valve lifters for quieter operation can be specified. Both engines drive through smooth-running four-speed automatic transmissions with overdrive.

The new LeSabre Limited Coupe. Front-wheel drive, sleek styling and the luxury you expect from Buick. In a trim aerodynamic body design.







The spacious LeSabre serves with equal grace as a vehicle for active families or for business use. A long list of available options permits personalization.

Above—Limited Sedan interior. Far left—Standard Custom seat. Left—Available 55/45 Custom Seat.



## LeSABRE INTERIOR

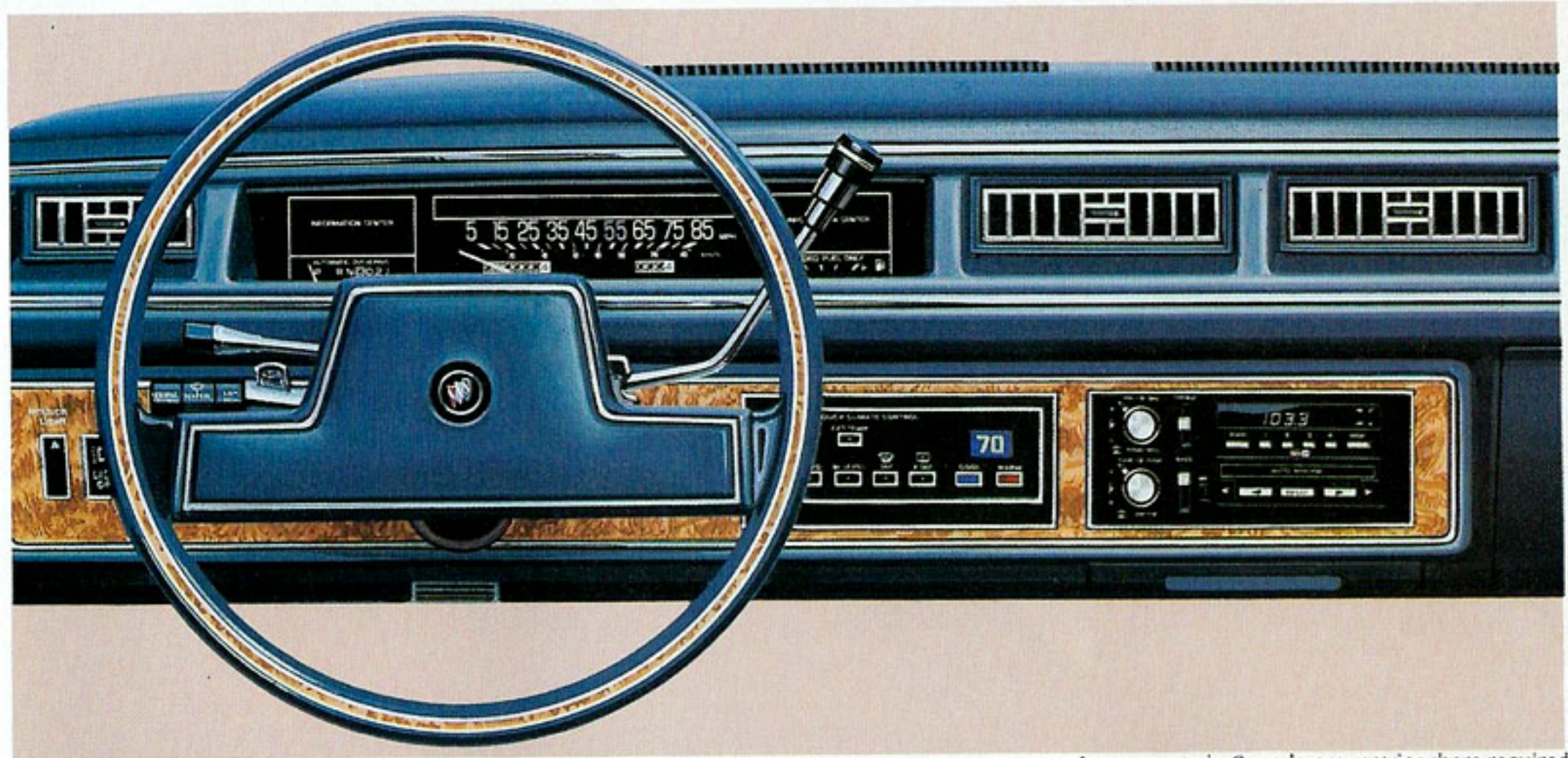
The luxury of the LeSabre interiors leaves no question in the driver's mind that this is a substantial car in the Buick tradition. LeSabre Custom models have notchback seating covered in velour cloth with a woven fabric trim, while the Limited series provides plush, reclining 55/45 loose-pillow velour seats. Every LeSabre seat has been constructed with full-foam cushioning.

LeSabre offers a generous selection of standard equipment, including air conditioning, tinted glass, all-season, steel-belted radial tires, and handsome, luxurious interiors. One reading of the standard equipment list will tell you why LeSabre owns the enviable reputation of offering an impressive value for the investment.

In keeping with the LeSabre reputation of offering true luxury motoring, the available equipment list contains every convenience that even the most particular driver could want. There's the Delco GM/Bose Music System, for the ultimate in entertainment pleasure, a new sport steering wheel wrapped in genuine leather, and electronic digital instrumentation. Manual seat back recliners for the driver and passenger seats are also available. (Standard on Limited.)

LeSabre offers buyers a choice of coupe and sedan models in two series: the handsome LeSabre Custom series and the elegant LeSabre Limited. A LeSabre designed to fit the individual preferences of virtually any driver awaits in your Buick dealer's showroom. There are even selections from the option list that will create a LeSabre suited to the taste of the driver who enjoys performance coupled with a firmer, more "European" suspension system.

LeSabre for 1986 continues to demonstrate Buick's commitment to traditional value combined with advanced technology, aerodynamic styling, and dependable performance.



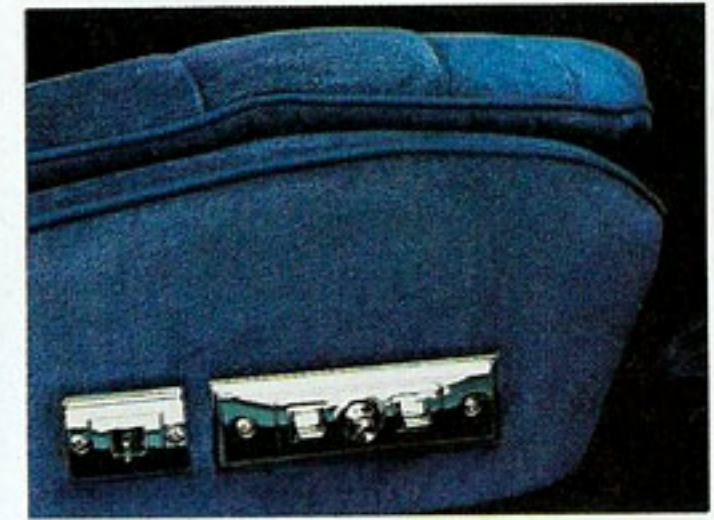
Instruments in Canada are metric where required.



LeSabre available radio features Delco/Bose speakers acoustically tailored for the car.



Power windows, door locks and mirrors are available for your convenience.



The passenger side of the available 55/45 seat may be adjusted for comfort with the available 6-way power seat and recliner.



## LeSABRE



Continuing Buick's leadership in the building of trimmer, more purposeful automobiles, the 1986 LeSabre sedan has been completely redesigned. Available in two series, Custom and Limited, it is a sleeker car, more than 400 pounds lighter than last year's LeSabre. Drivers will find, however, that the new design preserves all the qualities so prized by LeSabre owners.

LeSabre's smooth, quiet ride benefits from its fully independent suspension, which absorbs and dissipates the jolts of road irregularities, and from its aerodynamic exterior, which has dramatically reduced the noise associated with wind turbulence. The inherent structural integrity of LeSabre's body construction makes a significant contribution to the preservation of interior quiet.

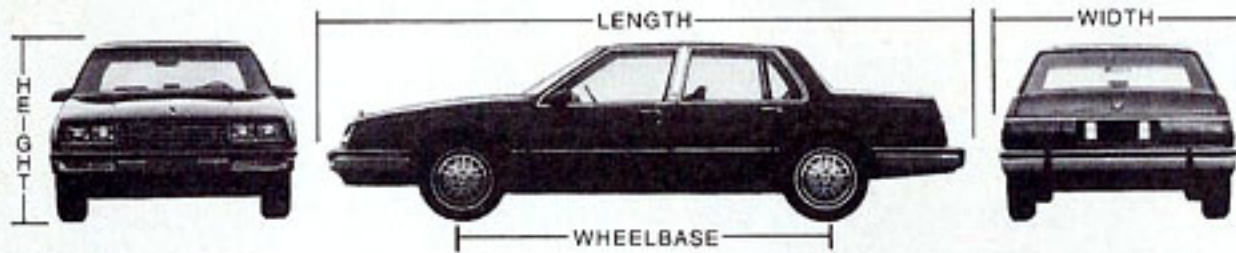
Driving the LeSabre with either of the available V-6 engines provides a demonstration of the practical value of modern technology. Both engines are smaller, lighter and more economical than traditional V-8 engines, yet both deliver surprising performance and excellent driveability through the standard four-speed automatic overdrive transmission. This torque and horsepower are made possible by Buick's continuing engine development programs and by such applied advances as sequential-port fuel injection, roller valve lifters, multi-port fuel injection and computer-controlled coil ignition (C<sup>3</sup>I).



The new LeSabre sedan is offered as a Custom or Limited (above), both with six-passenger roominess, both with Buick's high standards of quality.



# 1986 LeSABRE FACTS & FIGURES



## MODEL LINEUP

LeSabre Custom—2-Door Coupe/4-Door Sedan  
LeSabre Limited—2-Door Coupe/4-Door Sedan

DIMENSIONS	COUPE		SEDAN	
	mm	in	mm	in
Wheelbase	2815	110.8	2815	110.8
Overall Length	4984	196.2	4984	196.2
Overall Width	1832	72.1	1832	72.1
Height	1389	54.7	1410	55.5
Tread, Front/Rear	1532/1538	60.3/59.8	1532/1538	60.3/59.8
Headroom, Front/Rear	969/955	38.3/37.6	989/972	38.9/38.3
Legroom, Front/Rear	1076/940	42.4/37.0	1076/970	42.4/38.2
Shoulder Room, Front/Rear	1482/1456	58.4/57.2	1482/1492	58.4/58.7
Hiproom, Front/Rear	1410/1384	55.5/54.5	1410/1424	55.5/56.1
Usable Luggage Cap.	456 litres	16.1 cu. ft.	456 litres	16.1 cu. ft.
Fuel Tank Cap.	68.2 litres	15.0 gal.	68.2 litres	15.0 gal.

## STANDARD FEATURES ON ALL BUICKS

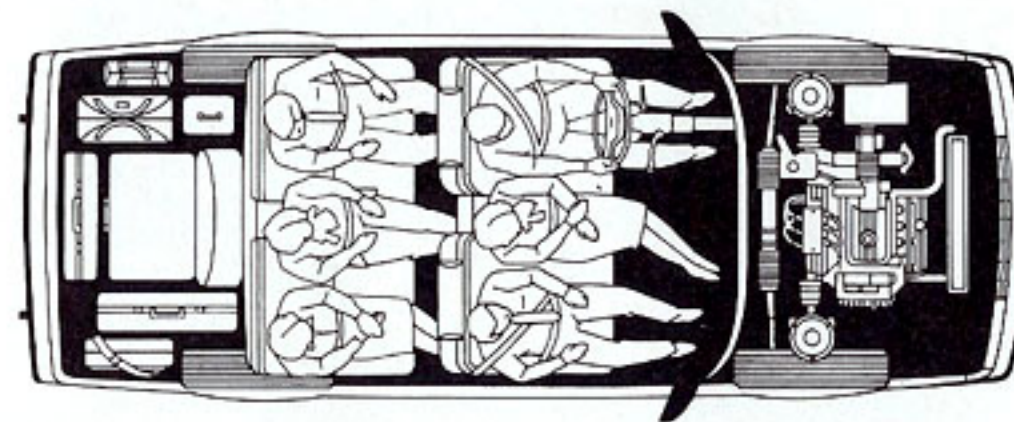
### SAFETY FEATURES

**OCCUPANT PROTECTION** • Manual lap/shoulder belts for driver and right front passenger (driver side includes visual and audible warning system) • Manual lap belts at each rear seat position, (and centre front, when applicable) • Energy absorbing steering column • Energy absorbing instrument panel • Energy absorbing front seatback tops • Laminated safety windshield glass and tempered safety side and rear window glass • Safety interlocking door latches • Passenger-guard inside door lock handles • Inertia-locking, folding front seat backs • Safety armrests • Head restraints, driver and right front pass. (adjustable/integral) • Dual sun visors • Smooth contoured door and window regulator handles • Pressure lock radiator cap.

**ACCIDENT AVOIDANCE** • Side marker lights and reflectors • Parking lamps that illuminate with headlamps • Four-way hazard warning flasher • Back-up lights • High-mounted stop lamps • Directional signal control (and lane change feature) • Windshield defroster, washer and dual speed wipers • Inside rearview mirror with vinyl-bonded glass • Outside left rearview mirror • Brake system with dual master cylinder and warning light • Starter safety switch • Dual action hood latch system (except rear opening Electra and LeSabre) • Low glare finish on instrument panel top, inside windshield mouldings, wiper arms/blades, metallic steering wheel surfaces • Illuminated heater and defroster controls • Illuminated windshield wiper and washer controls (if on I/P) • Tires

with built-in tread-wear indicators • Safety road wheel rims • Audible brake lining wear indicators, all disc brakes • Self-adjusting brake feature • Pressure relief fuel cap • Rear window defogger.

**THEFT DETERRENCE** • Audible reminder for ignition key removal • Theft deterrent steering column lock • Visible vehicle identification number • Remote inside hood release • Theft deterrent key system (separate key for ignition).



### A word about engines

These Buicks are equipped with GM-built engines produced by various divisions and affiliates of General Motors Corporation and GM of Canada.

Order Code	Displacement	Carb. bbl.	Cyl.	†V.I.N.	*Source	Transmission
LN7	3.0 litre (181 CID)	MFI	V6	L	(1)	O.D. Automatic
LG3	3.8 litre (231 CID)	SFI	V6	3	(1)	O.D. Automatic

\*Produced by GM (1) Buick Division USA

†The V.I.N. (Vehicle Identification Number) Engine Code is the eighth entry (letter or numeral) from the left on the vehicle serial number plate. The vehicle serial number plate is located on the top portion of the driver's side of the instrument panel and can be viewed from the exterior of the car by looking through the windshield.

Select the combination of "extras" that make your Buick uniquely yours from the long list of standard and available features, some of which are given below. Ask your dealer about group packages and the many other features not indicated below. Your dealer will also advise you of the availability of the various items on the model of your choice.

	Custom	Limited
Engines—3.0 litre V6	S	S
3.8 litre V6	A	A
Transmission—Overdrive Automatic	S	S
Brakes—Power Front Disc/Rear Drum	S	S
Steering—Power	S	S
Tires—205/75R x 14 Radial (black)	S	S
205/75R x 14 Radial (white)	A	A
215/75R x 14 Radial (black)	A	A
Self-Sealing Tires	A	A
Firm Ride and Handling Suspension	A	A
Gran Touring Suspension	A	A
Automatic Level Control	A	A
Cruise Control	A	A
Seats—Notchback	S	—
55/45 Divided	A	S
Reclining—Power Seat Back	A	A
Digital Electronic Instrument Cluster	A	A
Tilt Steering	A	A
Mouldings—Belt Reveal	S	S
Wheel Opening	S	S
Bodyside	A	S
Door Edge	A	A
Power—Seat, Driver, 6-way	A	A
Door Locks	A	A
Door Locks—Automatic	A	A
Deck Release	A	A
Windows	A	A
Wheels—Deluxe Covers	S	S
Wire Covers	A	A
Styled Aluminum	A	A
Stripes—Accent	A	A
Air Conditioning—Manual	S	S
Automatic	A	A
Rear Window Defroster	S	S
Roof—Full Vinyl—Sedan	A	A
Sunroof	A	A
Glass—Soft-Ray Tinted	S	S
Cornering Lamps	—	A
Door Courtesy and Warning Lamps	A	A
Tungsten Halogen Headlamps	A	A
Radio—AM	S	S
AM/FM Stereo	A	A
AM Stereo/FM Stereo	A	A
AM/FM Stereo/Cassette	A	A
AM/FM Stereo with Delco-Bose Speakers	A	A
6-Speaker System	A	A
Trip odometer	A	A
Visor Vanity mirror	A	A
Trim, Luggage Compartment	A	A
Windshield Wipers, Variable Delay	A	A

S-Standard A-Available (extra cost) -- Not Available

Printed in Canada GM-4787