

1947 *PONTIAC*



A
fine car
made finer



LESTER GOODSON PONTIAC COMPANY
1117 SAN JACINTO STREET
HOUSTON, TEXAS : P. 1295

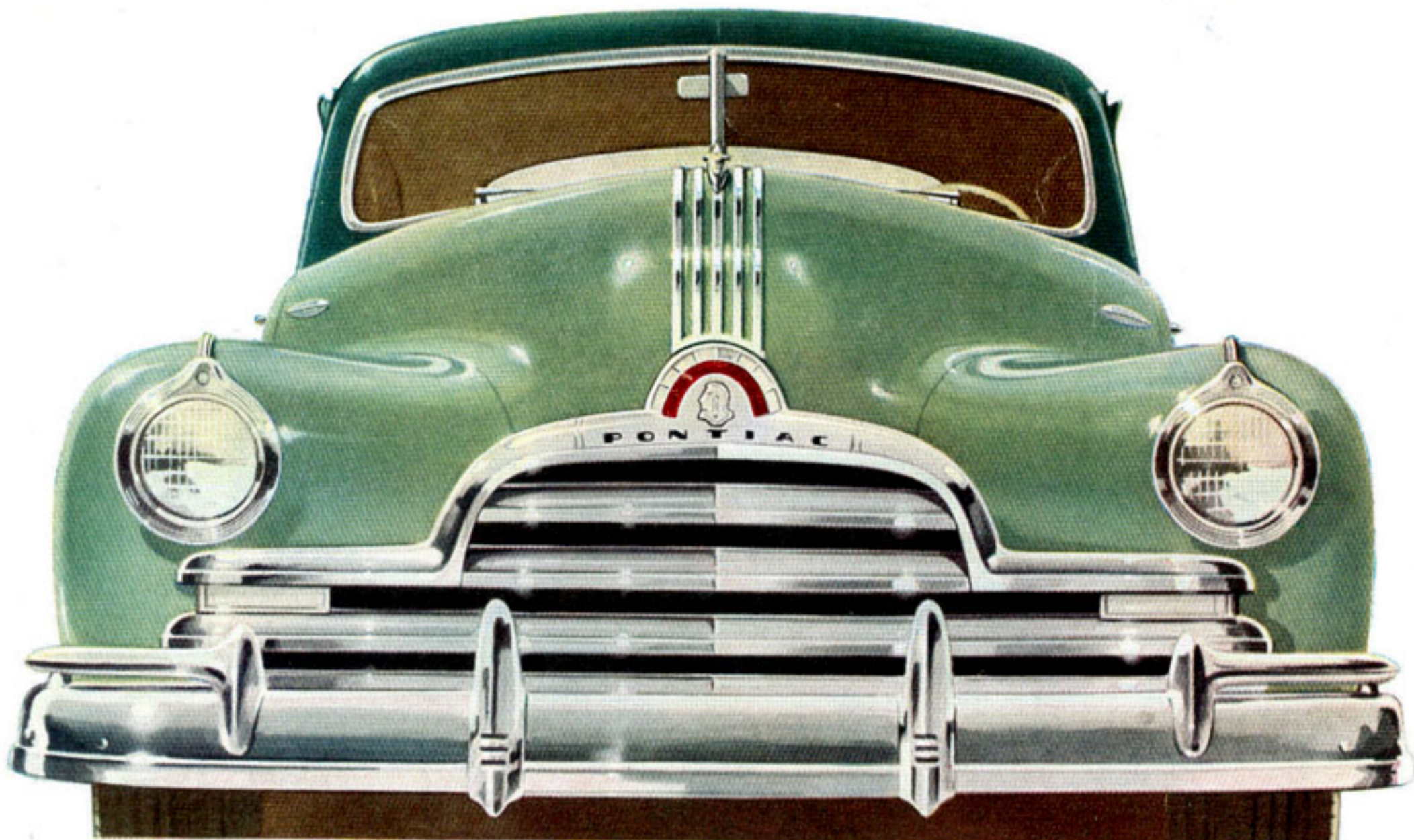


A fine car made finer!

PONTIAC FOR 1947

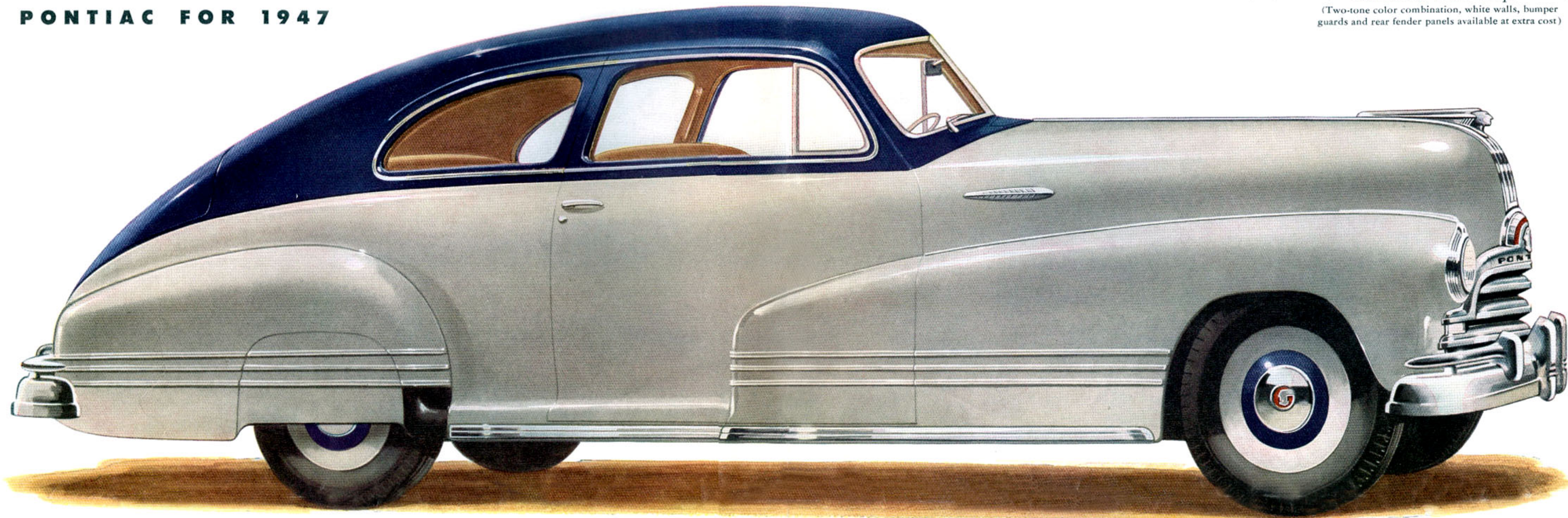
Refinements in appearance and mechanical design highlight the 1947 Pontiac. Pontiac's reputation as a fine car has long been accepted. Now this reputation is further enhanced . . . for here is truly a "Fine Car Made Finer."

A glance at its striking new styling or a few minutes behind the wheel will tell you what more than a million owners believe . . . that Pontiac offers the industry's finest combination of beauty, performance, dependability, economy and value.



PONTIAC FOR 1947

Streamliner Sedan-Coupe
(Two-tone color combination, white walls, bumper guards and rear fender panels available at extra cost)

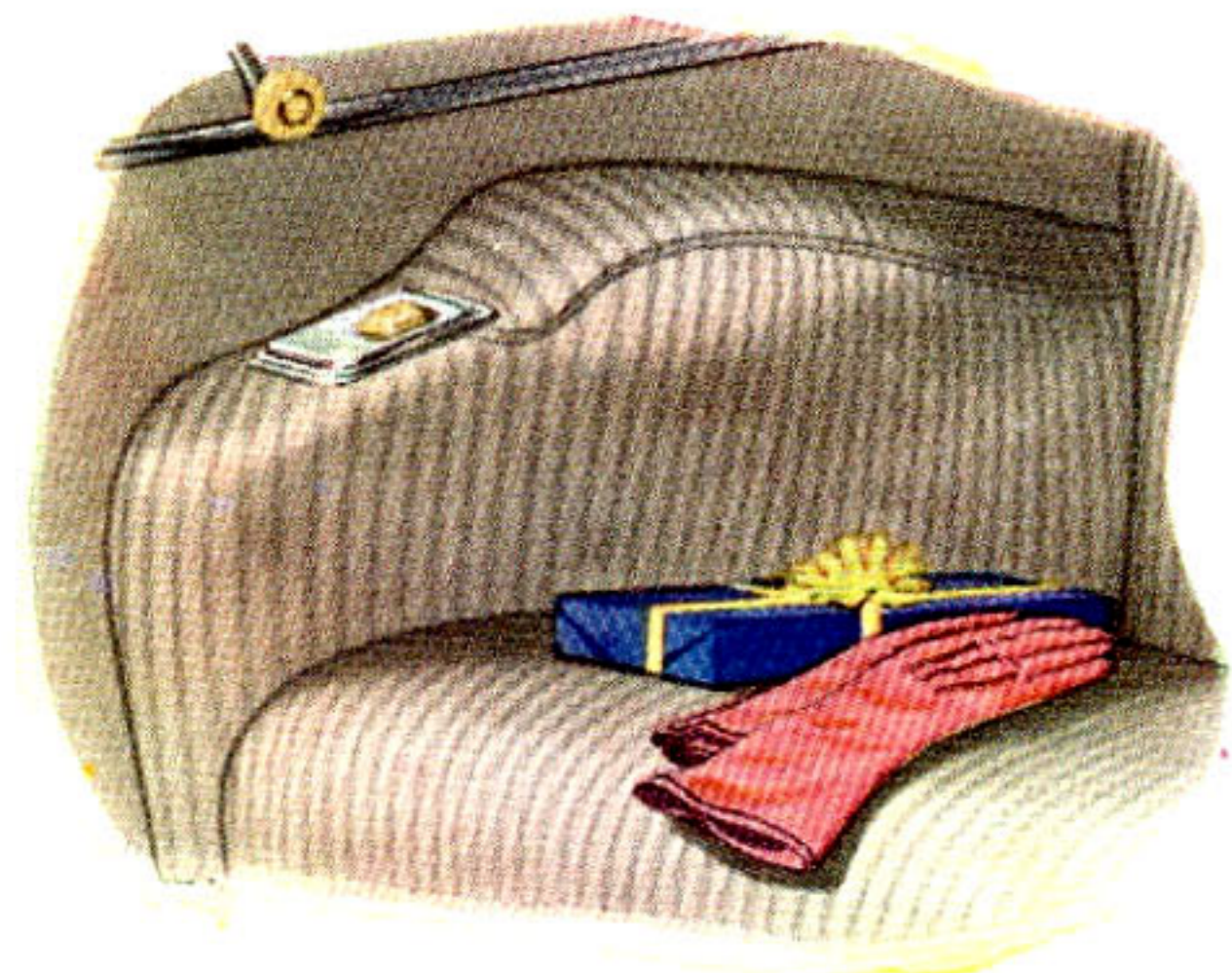


Long . . . low . . . and beautiful—with quality styling features usually found only in the most expensive cars. Among postwar appearance improvements, Pontiac

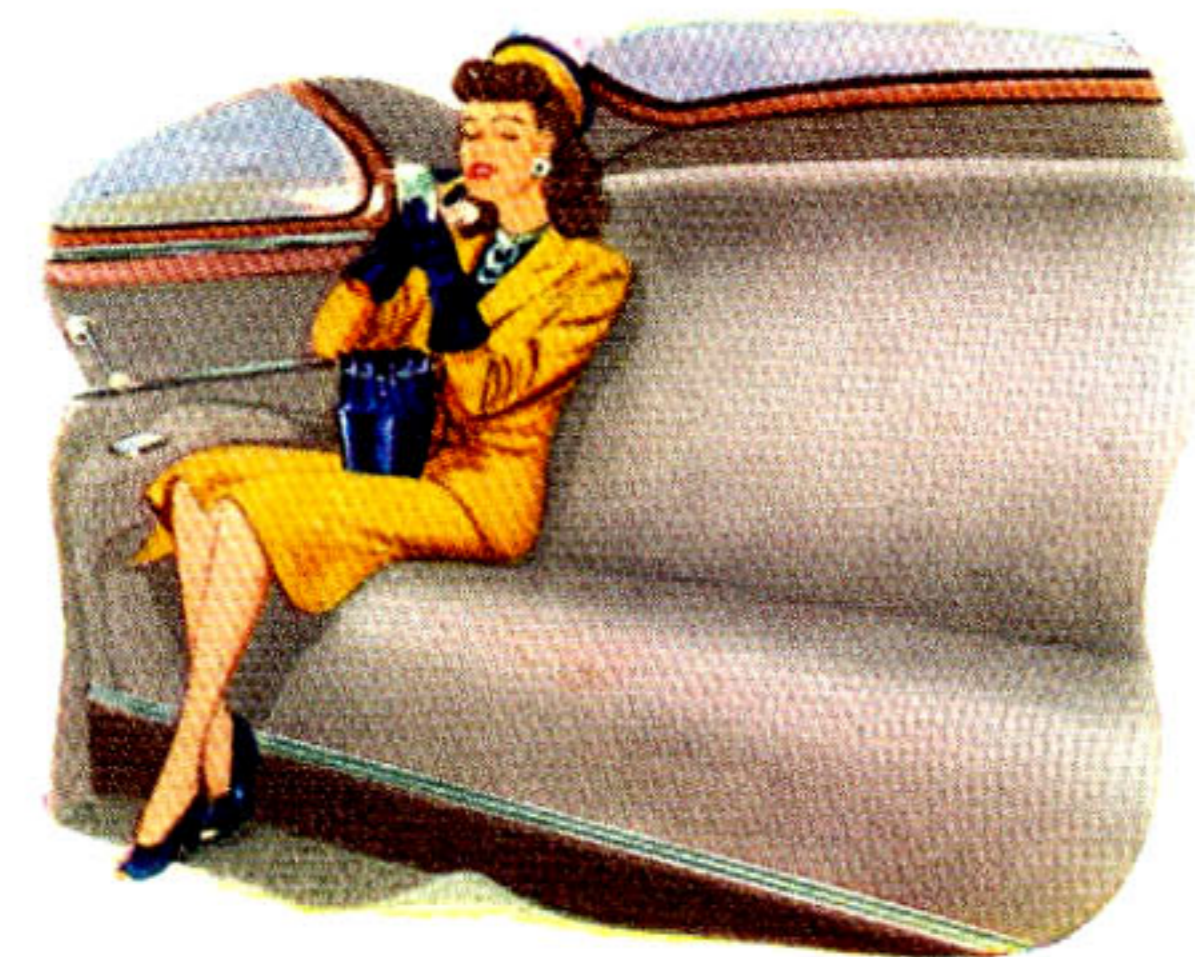
for 1947 offers new front end beauty, new speed-line fender treatment, massive wrap-around bumpers, newly designed instrument panel and custom-type upholstery.

In no other car in Pontiac's price range will you find so many of the features you've always wanted and which contribute so much to driving pleasure.

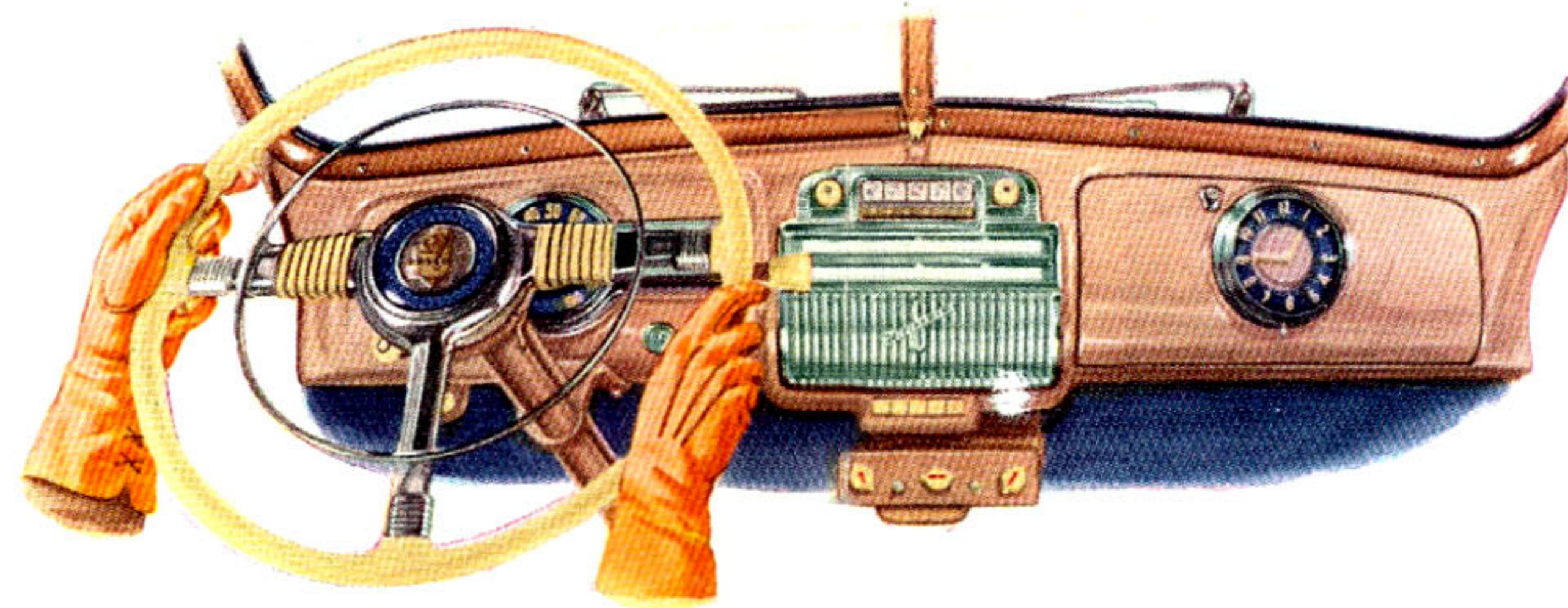
Pontiac is famous for its fine car features



Rear seat arm rests with built-in ash trays are standard equipment in all Pontiac models . . . enable passengers to relax in living-room comfort.



Pontiac's seats offer divan-comfort, with plenty of leg and head room, and ample width for three passengers. Deep carpeting is another luxury feature of Pontiac interiors.



Highlighting the 1947 Pontiac interior is an attractive and easily-read grouping of instruments and controls. The Streamliner series instrument panel, shown here, combines Berwick Beige and Autumn Brown. Edge-lighted instruments and sparkling chrome complete the ensemble. (De Luxe steering wheel, radio, clock and heater available at extra cost.)



Soft and luxurious, Pontiac upholstery reflects good tailoring in its neat striping, deep "shadow paneling" and tasteful metal trim.

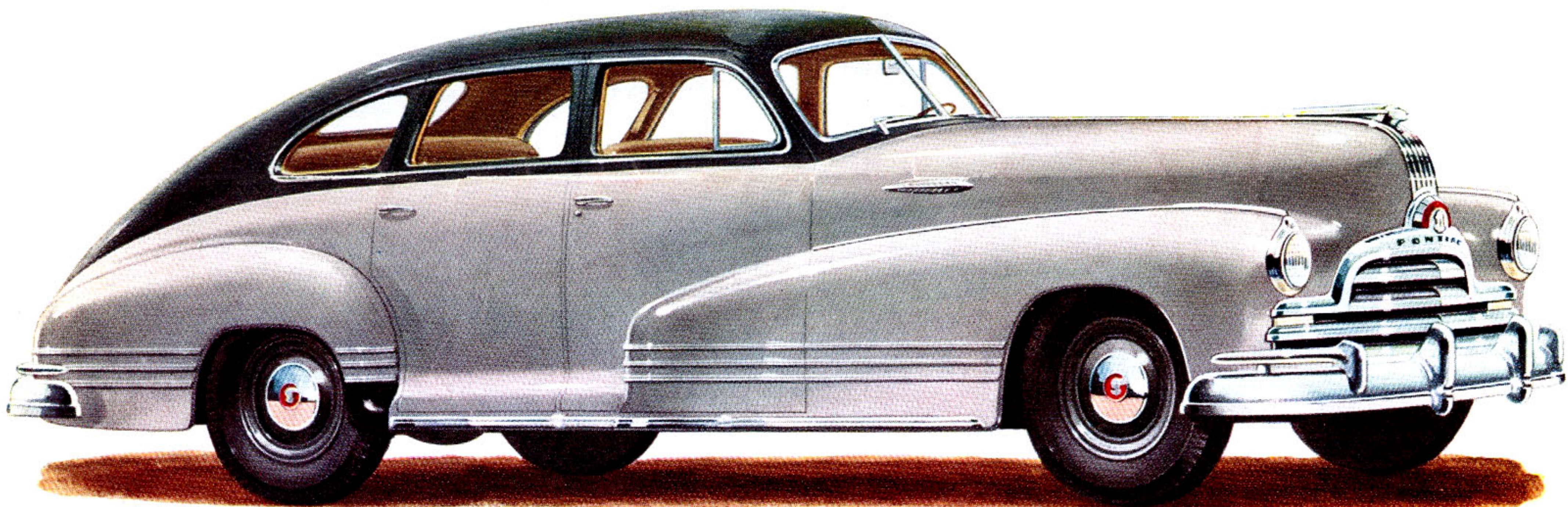


Pontiac's Venti-Heat heater is thermostatically controlled and provides constant fresh air and ample heat at the temperature you desire. Easy adjustments adapt it to a variety of abnormal conditions. (Available at extra cost.)

PONTIAC FOR 1947...

A fine car made finer!

10 BODY STYLES... 2 SERIES: TORPEDO AND STREAMLINER... YOUR CHOICE OF A SIX OR AN EIGHT



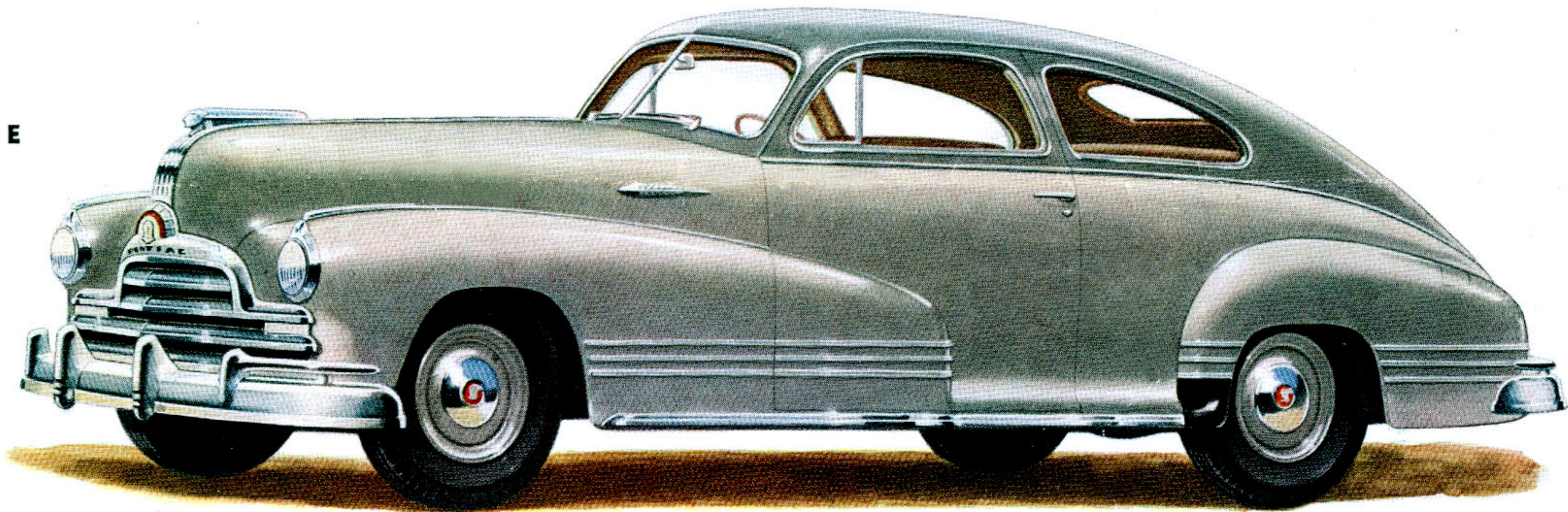
Finer

IN APPEARANCE

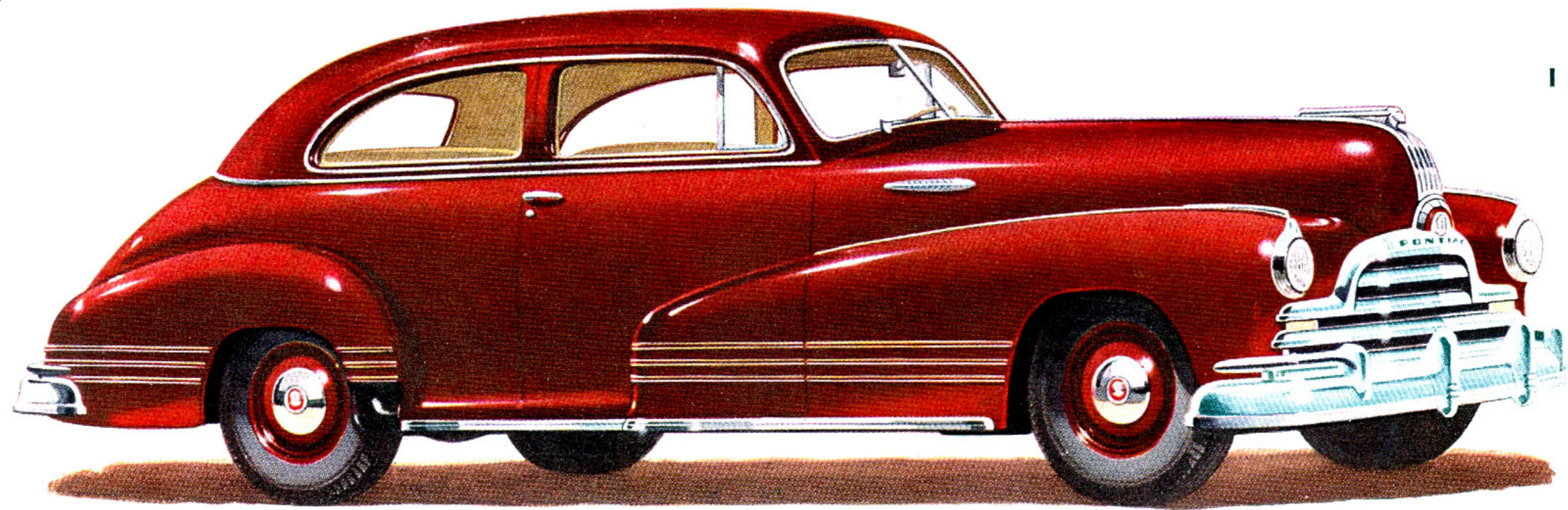
Streamliner 4-Door Sedan

Finer

IN APPEARANCE



Torpedo Sedan Coupe



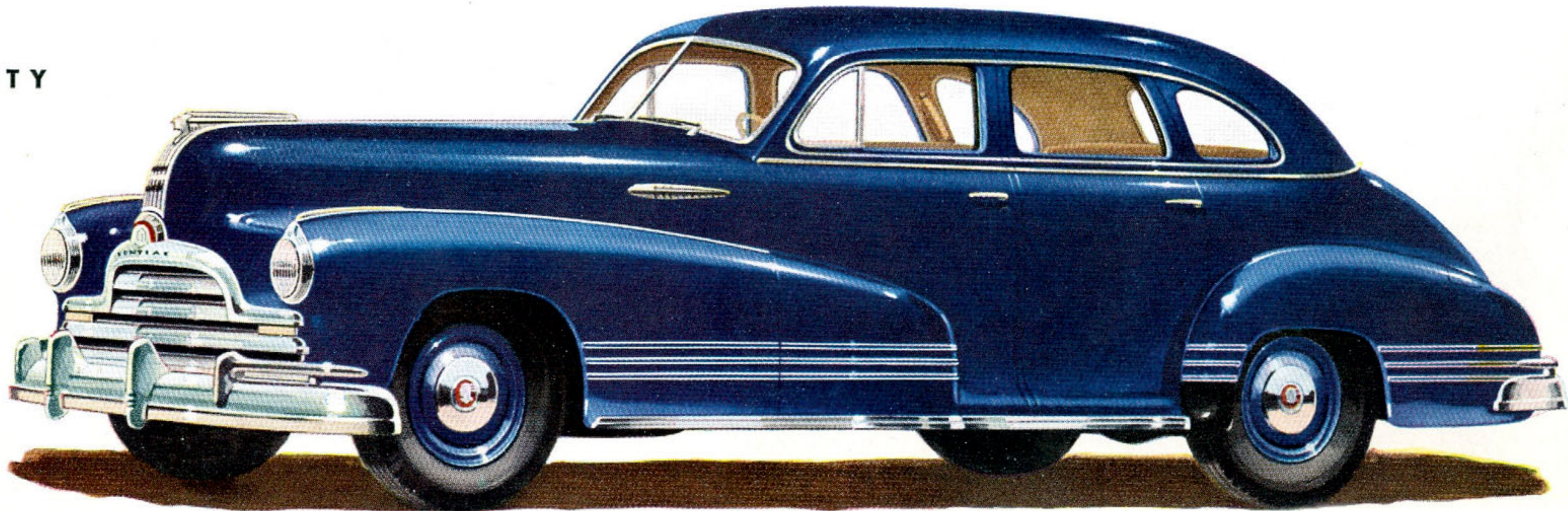
Finer

IN DEPENDABILITY

Torpedo 2-Door Sedan

Finer

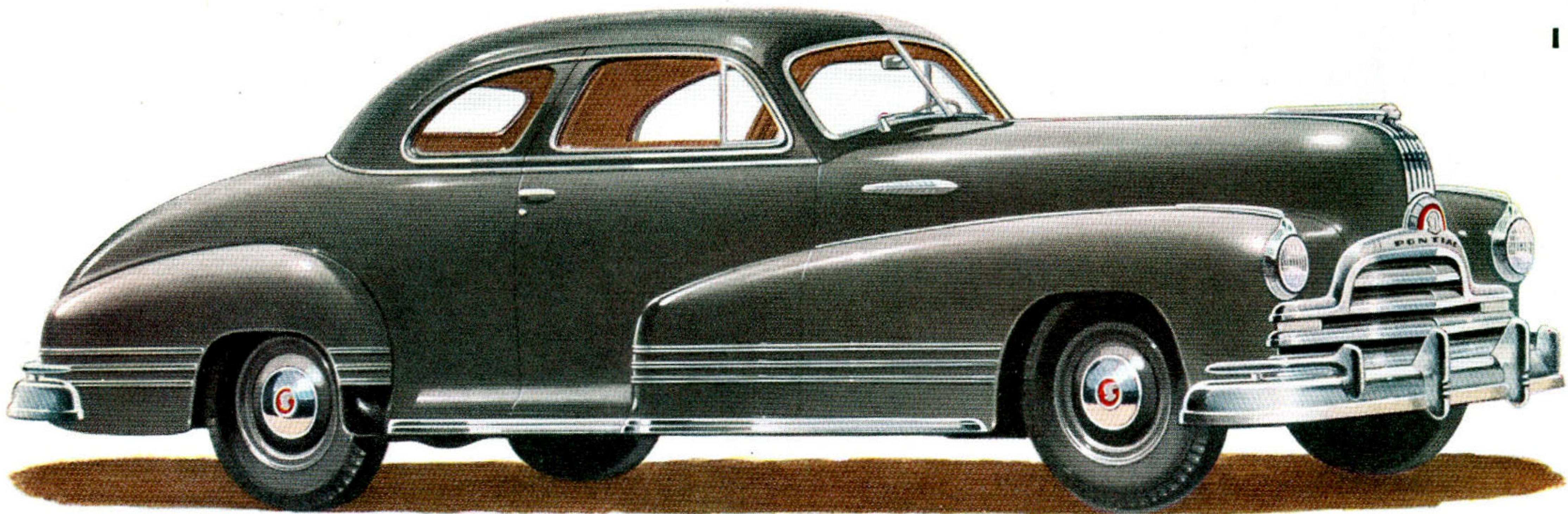
IN DEPENDABILITY



Torpedo 4-Door Sedan

Finer

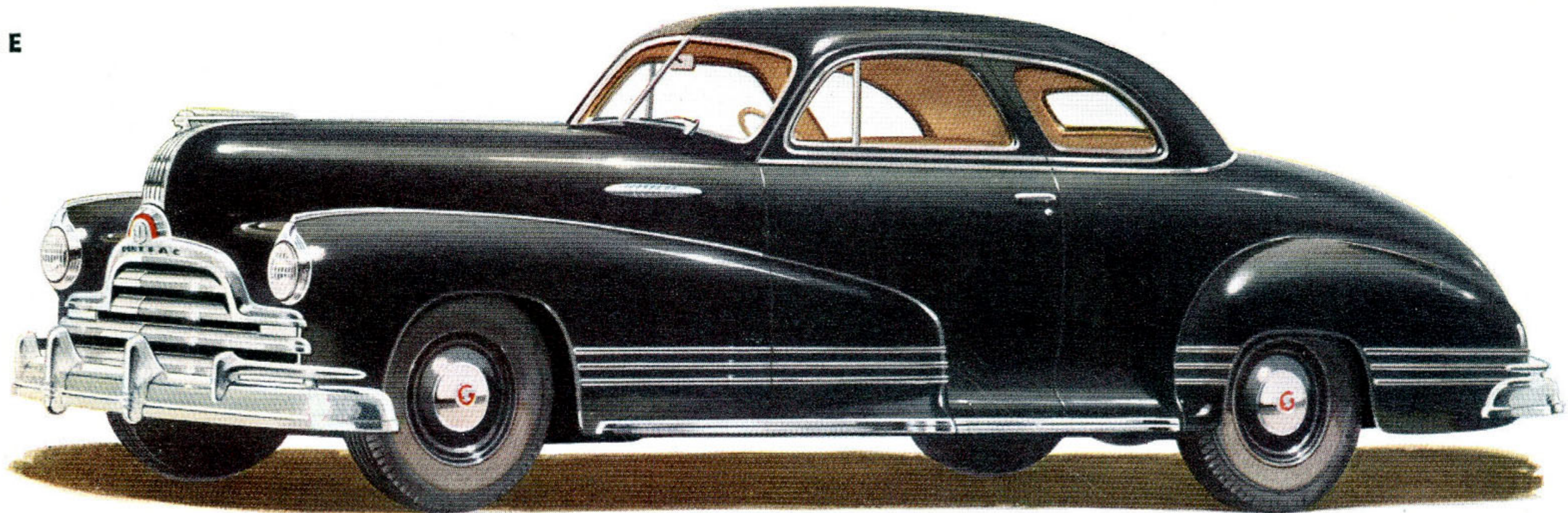
IN PERFORMANCE



Torpedo Sport Coupe

Finer

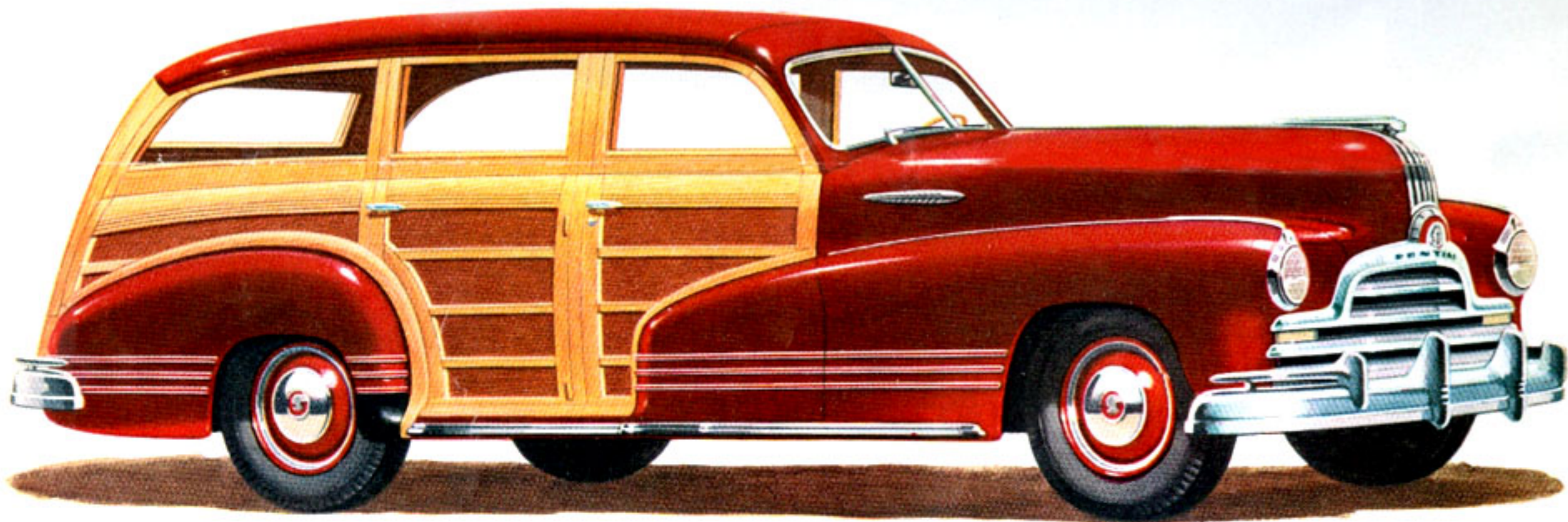
IN PERFORMANCE



Torpedo Business Coupe

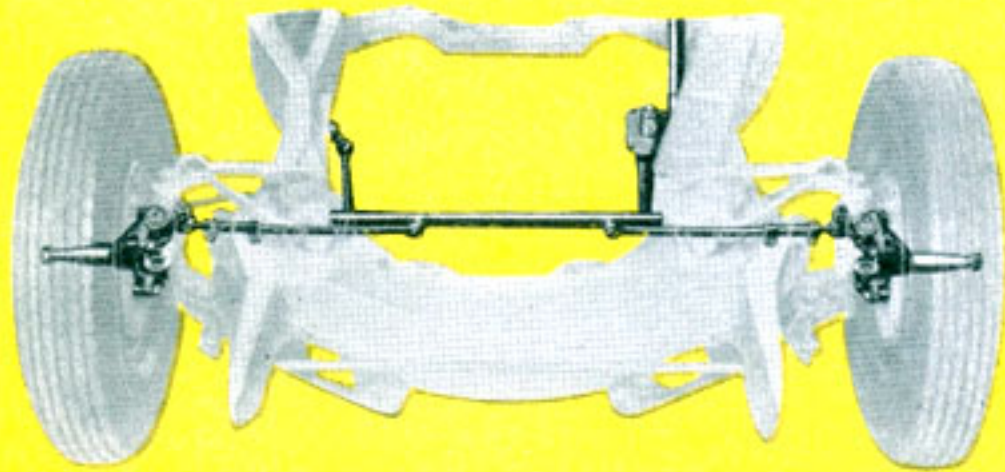
Finer

IN QUALITY



Streamliner Station Wagon

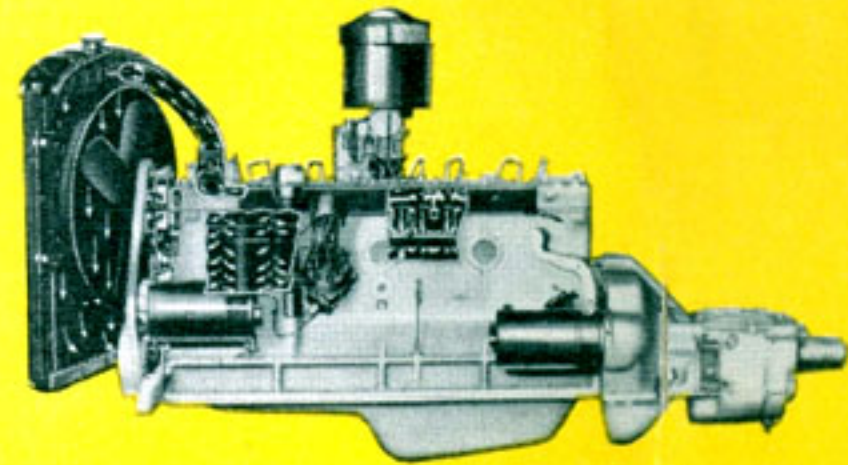
Two-tone color combination, bumper guards and wheel trim rings shown on cars on this page available at extra cost



Tru-Arc Safety Steering gives more positive control with a minimum of effort. Wheel fight is minimized and action of the steering mechanism is greatly simplified.



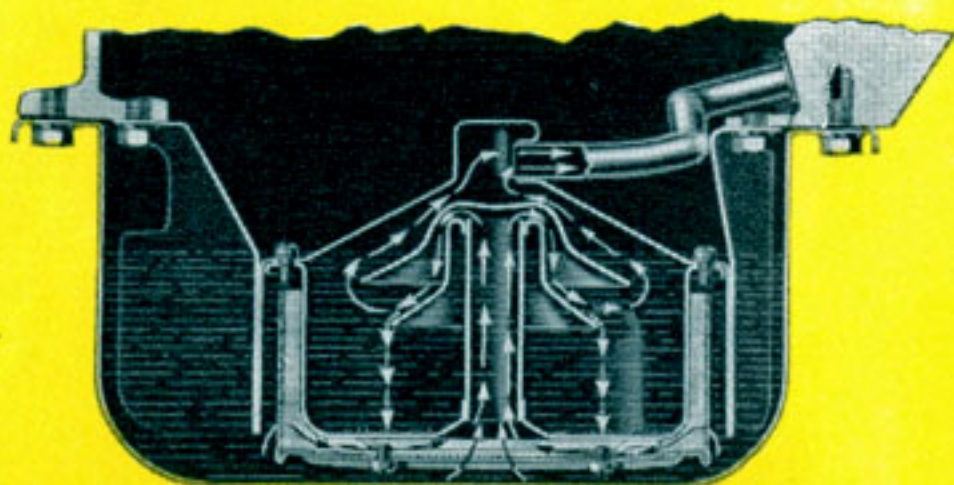
With Pontiac's *Duflex Rear Springs* light and heavy loads are compensated for mechanically, forming the basis of Pontiac's famous easy ride. Liners eliminate squeak.



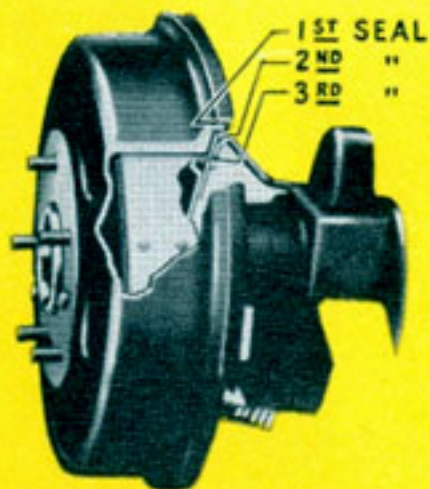
Pontiac's *All-Weather Temperature Control* assures more efficient engine operation by means of pressure cooling, full-length water jackets, water recirculation and thermostatic temperature control.



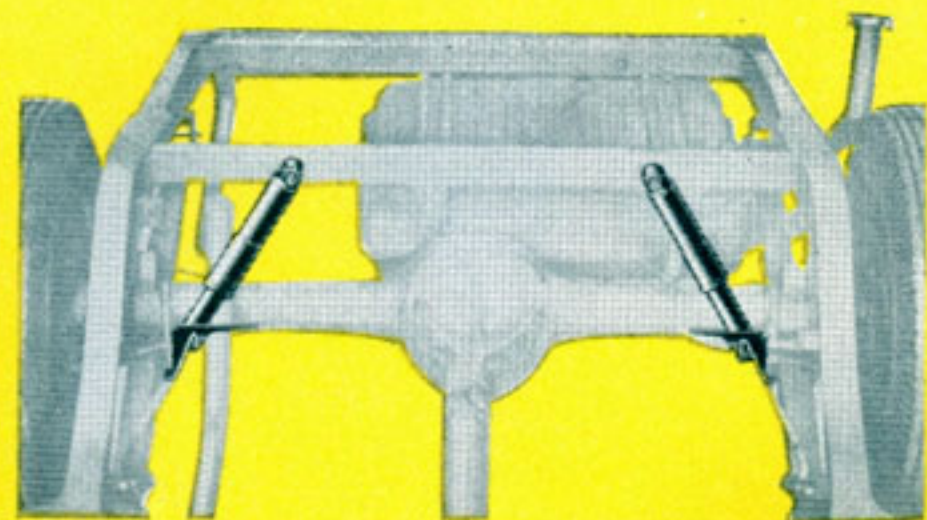
Torpedo Convertible



Contributing to Pontiac's long life is its famous *Built-In Permanent Oil Cleaner* which automatically gives positive protection against dirt and grit, and never needs replacing.



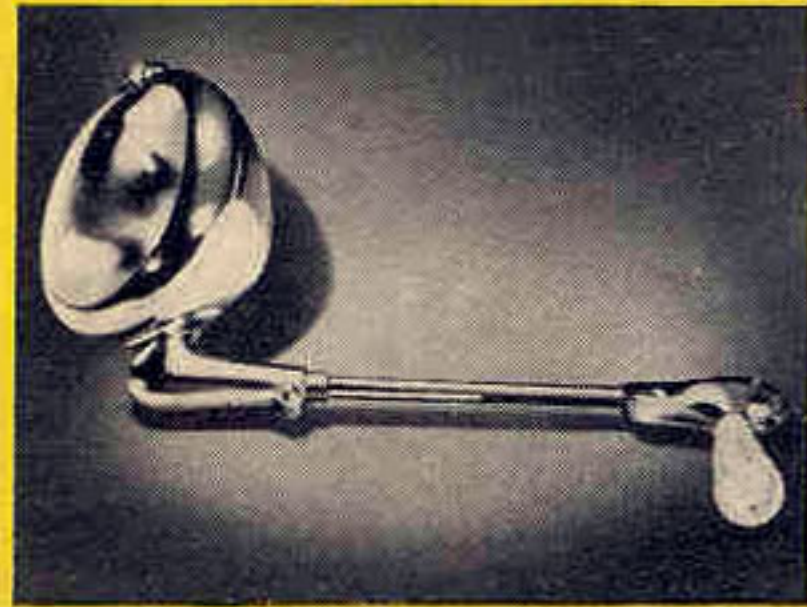
Pontiac's self-energizing, *Triple-Sealed Hydraulic Brakes* are protected against water and dirt, give you quicker, smoother stops and longer lining life.



Hydraulic Cushion Levelators reduce cross-wise body sway, give better control over wheel bounce on rough roads, and at the same time contribute to Pontiac's famous cushioned ride.

PONTIAC ENGINEERED ACCESSORIES FOR 1947

SPECIFICATIONS



Spot Light



Seat Covers



Luggage Compartment Light



Back-Up Light



Fog Lights



Outside Rear-View Mirror



Visor Vanity Mirror



Non-Glare Rear View Mirror



Underhood and Trouble Light

The accessories shown above plus many other Pontiac engineered accessories for safety, comfort, convenience and maintenance are available at reasonable cost.

ENGINE—6 cyl.; L-Head; bore and stroke $3\frac{9}{16}$ " x 4"; piston displacement 239.2 cu. in.; max. h.p. 90; comp. ratio 6.5 (7.5 optional); 86.5 lb. counterweighted crankshaft. 8 cyl.; L-Head; bore and stroke $3\frac{1}{4}$ " x $3\frac{3}{4}$ "; piston displacement 248.9 cu. in.; max. h.p. 103; comp. ratio 6.5 (7.5 optional); 80.5 lb. counterweighted crankshaft; Harmonic vibration dampener; chrome nickel alloy pistons; full pressure lubrication; rifle-drilled connecting rods; permanent, precipitation-type oil cleaner; gusher valve cooling; tapered valve guides; water around all valves. **ELECTRICAL**—Delco-Remy; fully automatic control; 15-plate Delco battery; current and voltage regulator. **FUEL SYSTEM**—Mechanical fuel pump; air cleaner and silencer; single triple-venturi carburetor on 6, dual type on 8; automatic choke; 17 gal. tank; manifold heat control. **CLUTCH**—Single disc, $9\frac{1}{2}$ " dia.; ball release bearing. **TRANSMISSION**—Synchromesh, semi-automatic. **FRAME**—Straight "X" cantilever type. **WHEELBASE**—Streamliner, 122" ($210\frac{1}{4}$ " overall); Torpedo, 119" ($204\frac{1}{2}$ " overall). **STEERING GEAR**—19:1 ratio; 18 in. wheel; link parallelogram control with worm and roller gear. **AXLES**—Front, link parallelogram-type knee-action; rear, semi-floating, hypoid gear. Standard axle ratio, 4.3 to 1 on the Streamliner series, 4.1 to 1 on the Torpedo; economy axle (3.9 to 1) or mountain axle (4.55 to 1) optional at no extra cost. **BRAKES**—Multi-sealed, Duo-Servo hydraulic; moulded linings; emergency brake on rear wheels. **SPRINGS**—Duflex variable rate leaf spring in rear; suspension coil type in front; Delco-Lovejoy shock absorbers front and rear. **GENERAL**—Dual windshield wipers, dual horns, dual sun visors and dual tail lamps; cigar lighter; front and rear ash trays; automatic interior lighting; dash-controlled hood lock; automatic, non-interfering trunk door supports; spare tire and tube. **COLORS**—Silver Wing Gray, Mariner Blue, Smoked Pearl, Parma Wine, Black, Asbury Green, and Cairo Cream. Two tone combinations optional at extra cost include Mariner Blue and Silver Wing Gray, Smoked Pearl and Silver Wing Gray, and Asbury Green and Burbank Green.

Pontiac Motor Division of General Motors Corporation reserves the right to make changes at any time, without notice, in prices, colors, materials, equipment, specifications and models, and also to discontinue models.

