



N. V. CENTRAAL AUTOMOBIELBEDRIJF
„ROTTERDAM”

NIEUWE KERKSTRAAT 8 ROTTERDAM
CHRYSLER-PLYMOUTH-DE SOTO-ADLER-FARGO TRUCKS

TELEFOON
57942

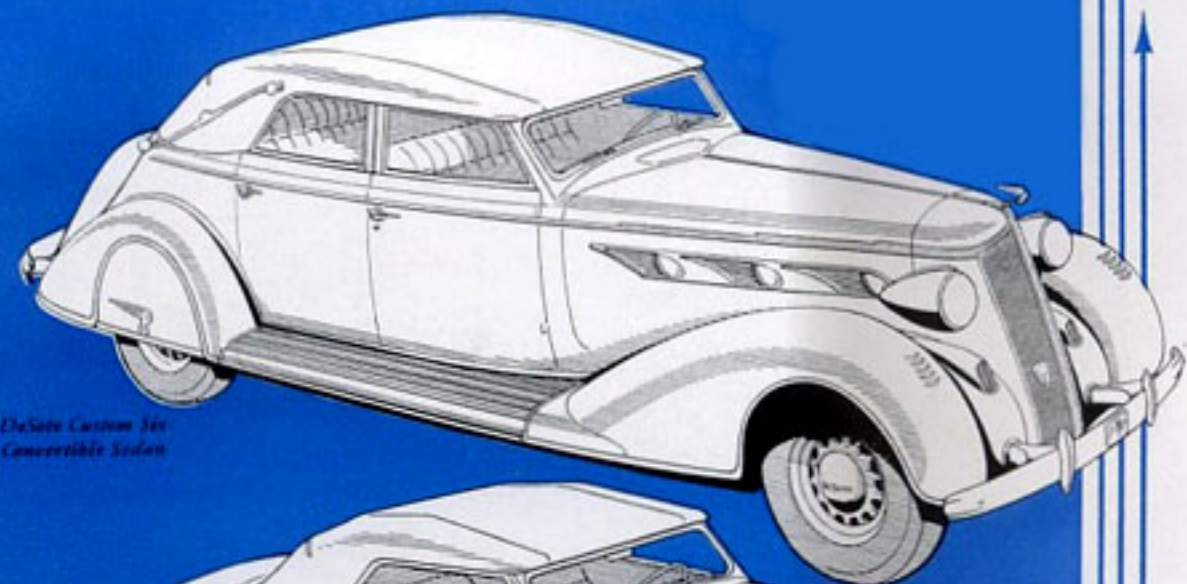
VERKOOP-AFD. NA KANTOORTIJD
TELEFOON 43709

Airstream
DE SOTO

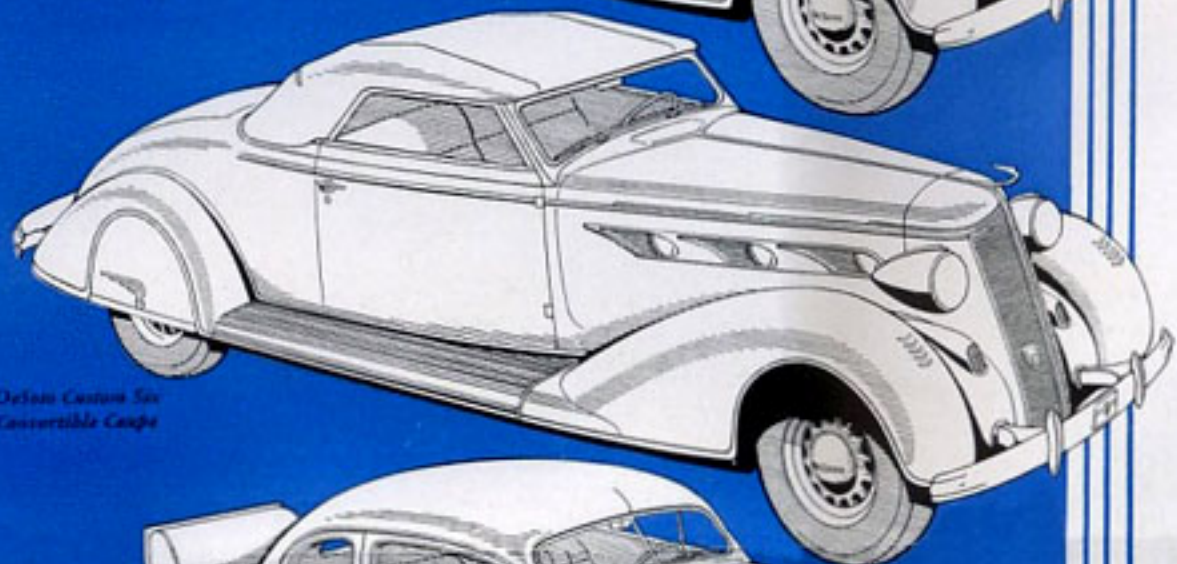
IMPORTANT ADVANCEMENTS DISTINGUISH THE DE SOTO AIRSTREAM SIXES FOR 1936

THERE are many outstanding improvements in the 1936 models. The over-all length of the cars is about five inches greater. The wheelbase has been increased to 118 inches. The new Chrysler-designed and Chrysler-perfected all-steel top provides added strength and entirely eliminates drumming. New construction and arrangement of seats and cushions have increased interior roominess fully four and one-half inches. Similarly, two inches greater shoulder space in both front and rear compartments has been provided. And chair-height seats, aided by lowered floors, provide even greater comfort.

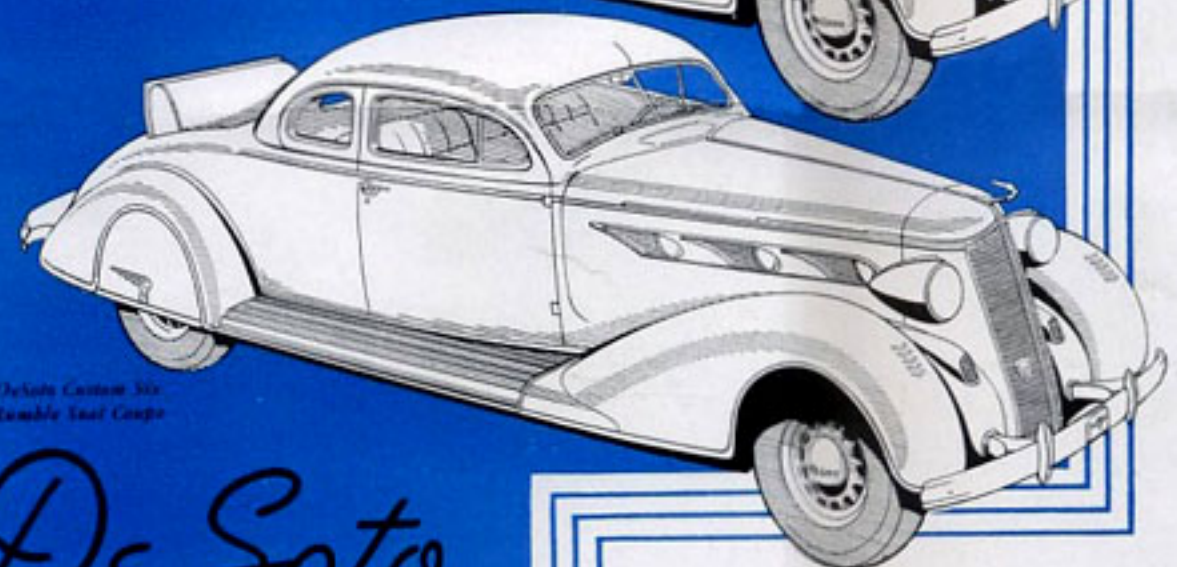
Individual front wheel springing, balanced weight distribution, tapered-leaf springs and the DeSoto Ride Stabilizer, distinguish all models. And there are refinements that assure an even more perfect Floating Ride. New, hydraulic shock absorbers, adjustable to load and road conditions have been added. Advance-type spring shackles contribute a definite share to the unusual riding comfort that marks the New Airstream DeSoto. A newly perfected method of steering prevents road shocks at the front wheels from reaching the driver through the steering wheel. Automatic overdrive equipment, so popular in the 1935 DeSoto Airflow, is available also at slight additional cost, on the New DeSoto Airstream models. This is a special transmission which reduces the engine speed by approximately one-third. It comes into automatic operation at 40 miles per hour.



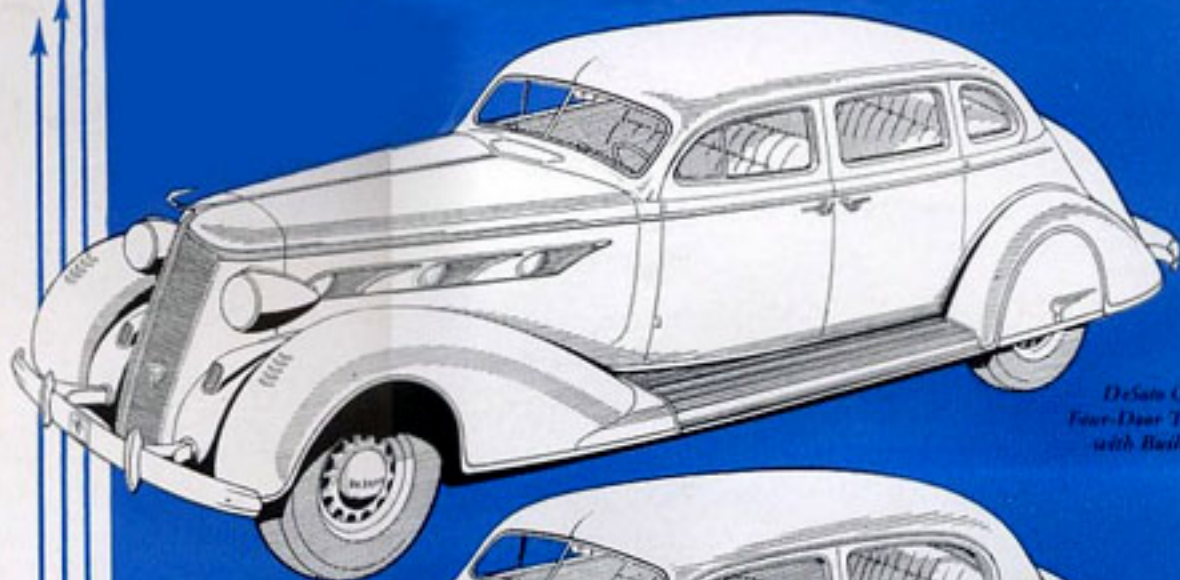
*DeSoto Custom Six
Convertible Sedan*



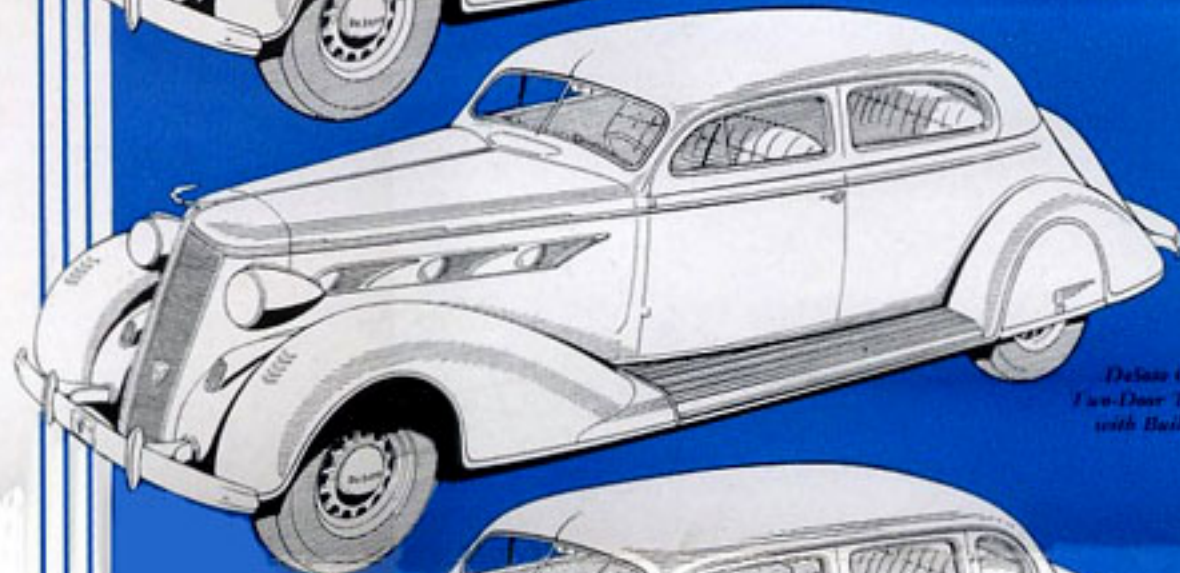
*DeSoto Custom Six
Convertible Coupe*



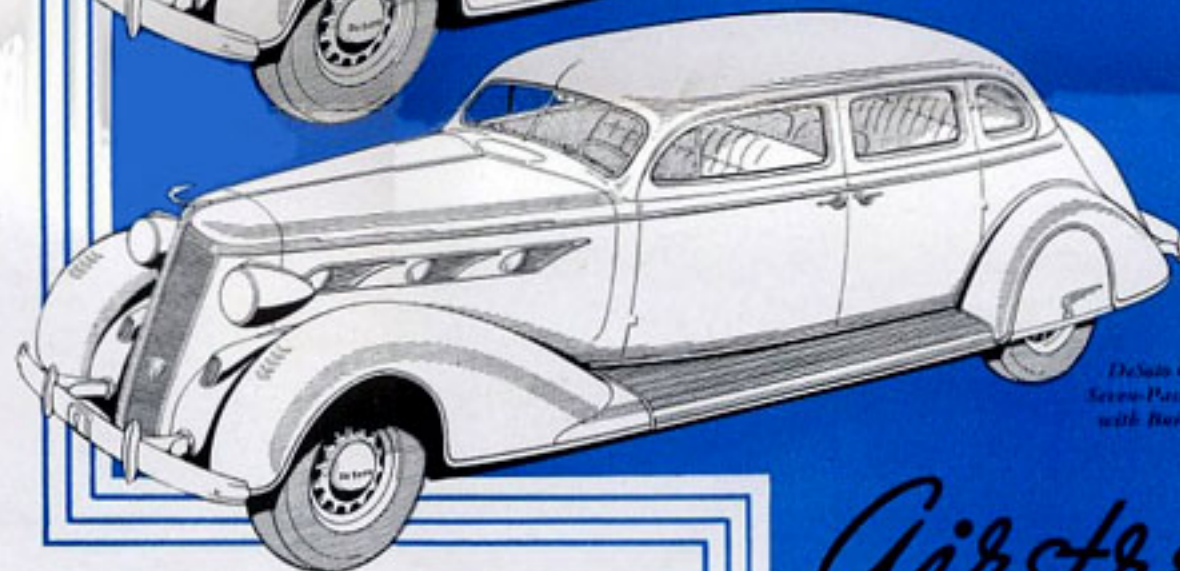
*DeSoto Custom Six
Roadster Tour Coupe*



*DeSoto Custom Six
Four-Door Touring Sedan
with Built-In Trunk*



*DeSoto Custom Six
Two-Door Touring Sedan
with Built-In Trunk*



*DeSoto Custom Six
Seven-Passenger Sedan
with Built-In Trunk*

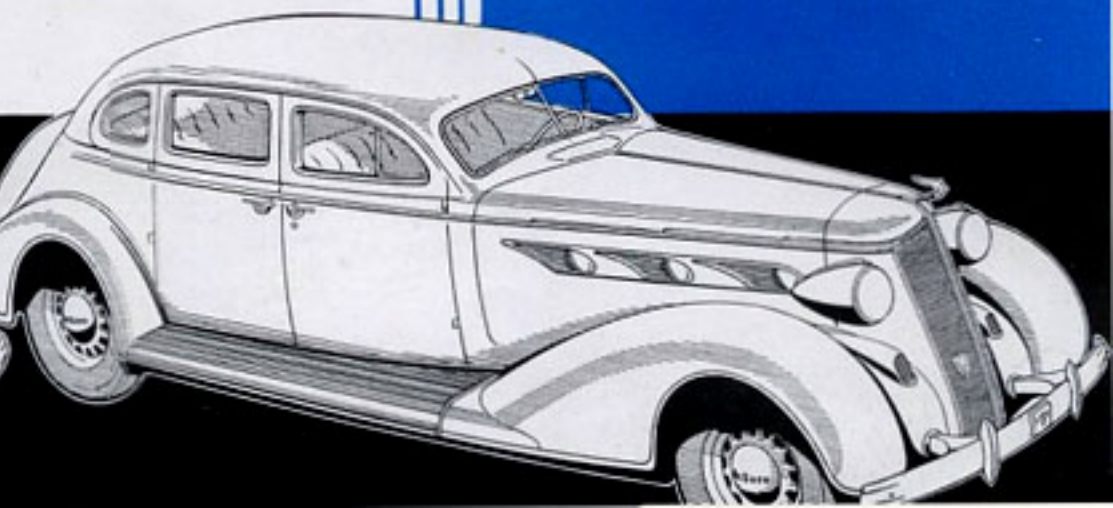
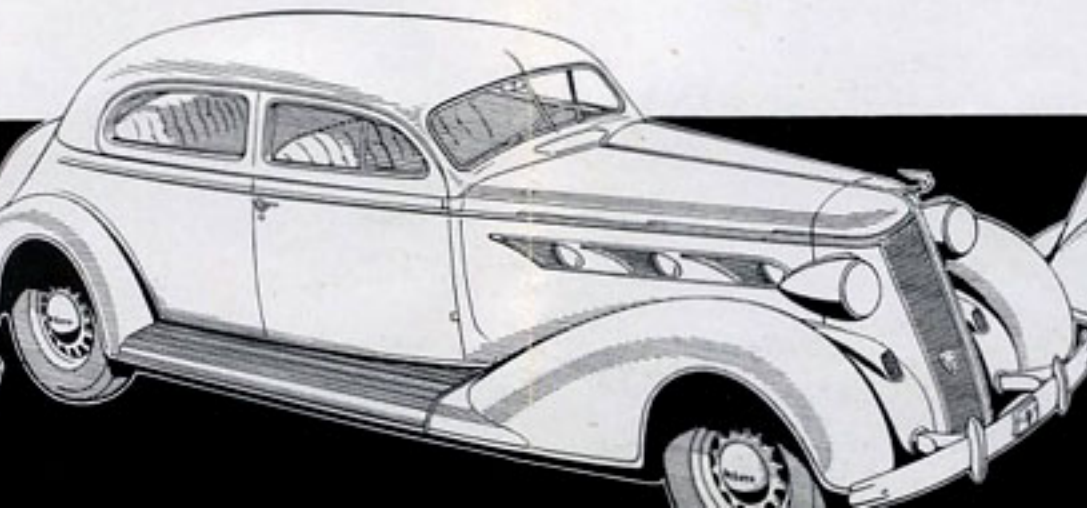
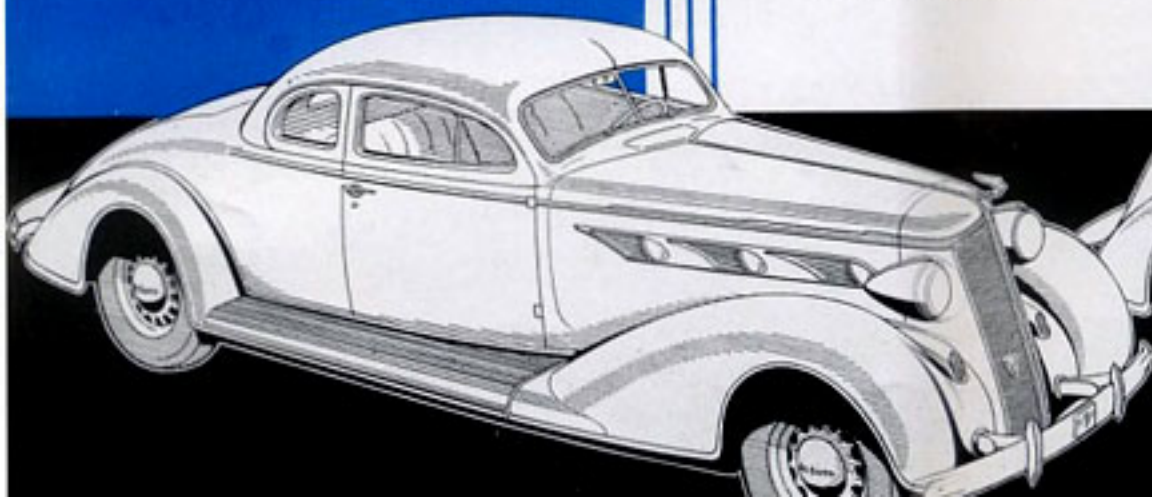
De Soto

Airstream

DeSoto Six Business Coupe

*DeSoto Six Two-Door Touring Sedan
with Built-In Trunk*

*DeSoto Six Four-Door Touring Sedan
with Built-In Trunk*



1936

Models



The DeSoto Airstream for 1936 presents a refreshing note in modern motor car design. Two complete lines of motor cars comprise this series. In the DeSoto Custom Six line are the Rumble Seat Coupe, Convertible Coupe, Two-Door Touring Sedan, Four-Door Touring Sedan, Convertible Sedan and Seven-Passenger Sedan. In the DeSoto Six line are the Business Coupe, Two-Door Touring Sedan and Four-Door Touring Sedan.





FEATURES

118-inch Wheelbase . . . Six-Cylinder Engine . . . Bore, $3\frac{3}{8}$ Inches . . . Stroke, $4\frac{1}{2}$ Inches . . . Rated Horsepower, 27.34 (A.M.A.) . . . Displacement 241.5 cu. in. . . . 5.1 to 1 Compression Ratio . . . 3.88 to 1 Rear Axle Ratio . . . Individually Sprung Front Wheels . . . Hypoid Rear Axle . . . Synchro-Silent Transmission with Quiet Helical Gears . . . Automatic Overdrive available at extra cost . . . Ride Stabilizer . . . Automatic Spark Advance with Vacuum Control . . . Anodic-Coated Aluminum T-Slot Pistons . . . Automatic Choke . . . Oil Filter . . . Air-Cooled Generator . . . Positive

Shift Type Starter . . . Steel Exhaust Valve Seat Inserts . . . Crankcase Ventilation . . . Automatic Manifold Heat Control . . . Air-Cooled Clutch . . . Rustproofing of Body and Sheet Metal Parts . . . Aircleaner and Intake Silencer . . . Full-Length Water Jackets . . . Low Pressure Balloon Tires 16 x 6.25 . . . Simplified Full-Vision Ventilation System . . . Precision-Type Interchangeable Main Bearings . . . Cooling Capacity, $3\frac{7}{8}$ Gallons . . . Capacity of Fuel Tank, 15 Gallons . . . Down-Draft Carburetor . . . All-Steel Top.

All information and specifications subject to change without notice and without responsibility to the Chrysler Corporation, Export Division.