

04 **mazda** 6



AND JUST AROUND THE NEXT CORNER, EMOTIONS YOU ALMOST FORGOT YOU HAD.

AVAILABLE 220-HP V6 ENGINE

5-SPEED CLOSE-RATIO MANUAL GEARBOX

POWER-ASSISTED 4-WHEEL DISC BRAKES

DOUBLE-WISHBONE FRONT SUSPENSION

MULTILINK REAR SUSPENSION

FRICTION-OPTIMIZED RACK-AND-PINION STEERING



OBVIOUSLY, ITS GENE POOL WAS OVERFLOWING WITH ADRENALINE.

The MAZDA6 is a true, authentic sports sedan that packs the kind of performance credentials ordinary sedans can only envy. Under the hood, your choice of two potent, all-aluminum powerplants: A 220-hp MZI 3.0-liter V6. And, a 160-hp MZR 2.3-liter I-4. True to Mazda's high-performance heritage, both engines utilize variable valve timing to maximize low-end torque and high-rpm power. Transmission choices are equally impressive. An eager-to-please 5-speed close-ratio manual gearbox is standard. Or, for both convenience and fun, choose the available electronically controlled Sport AT automatic that even allows you to shift gears manually. If you like your exhilaration pure and undiluted, we've got your number. MAZDA6.



IT REWRITES THE RULES OF THE ROAD ENTIRELY IN YOUR FAVOR.

Some drivers pretend they own the road. But the MAZDA6 gives you everything you need to actually take possession. Imagine setting up for an S-curve with the precise control, on-center feel and instant feedback of a friction-optimized rack-and-pinion steering system. And heading into a hairpin turn with an advanced 4-wheel independent suspension system that's both remarkably agile and confidence-inspiring. Or experiencing the uncanny balance of real power made possible by the MAZDA6's responsive, all-aluminum powerplant and powerful 4-wheel disc brakes. By every meaningful measure, the MAZDA6 is a car that delights in being driven. Want a second opinion? Test drive a MAZDA6 for yourself. And see how quickly your heart pounds out its approval.



SHORT STOPS. To help promote consistently quick, linear and fade-resistant stops, the MAZDA6 boasts 4-wheel disc brakes with large 11" rotors, plus a zero-loss-travel brake booster.



HOT HANDLING. Reflecting its sports-car heritage, the MAZDA6 utilizes a sport-tuned double-wishbone front suspension plus an independent multilink design in the rear, to deliver a firm, well-controlled, yet comfortable ride.



The lean, athletic lines of the MAZDA6's proudly proclaim its performance-oriented intentions—even without the exterior enhancements of an available Sport Package.

FROM ANY ANGLE, IT'S AN EXHILARATING
REFLECTION OF PERFORMANCE.



The MAZDA6 s above features the available Sport Package—without Rear Spoiler.

IF YOU LOVE TO DRIVE, YOU'VE COME TO THE RIGHT COCKPIT.

You can tell the MAZDA6 is a true sports sedan the instant you slip behind its handsome leather-wrapped wheel and adjust the available 8-way power driver's seat. Its easy-to-read instrument cluster and prominent tachometer readily telegraph the vehicle's vital signs. The leather-wrapped gearshift knob and parking-brake handle invite your grip. An illuminated console screen displays the time, outside temperature, and audio and climate control settings. Naturally, power windows, mirrors and door locks are all standard. As are air conditioning and a 6-speaker AM/FM/CD audio system. After all, since the MAZDA6 seats five, you'll want to share the exhilaration with others.



COMFORTABLY IN CONTROL. An ideal driving position helps promote better control. So the steering wheel of the MAZDA6 tilts and telescopes to help different drivers easily achieve their ideal driving position.



UNDER YOUR THUMB. Illuminated steering-wheel-mounted controls for the AM/FM/CD audio system and cruise control are standard—allowing you to control either system without lifting a hand.

YOU'LL ENJOY THE PERFORMANCE—
REGARDLESS OF WHERE YOU'RE SITTING.





DOUBLE DUTY. Backseat passengers will appreciate the MAZDA6's dual-purpose rear-seat armrest. It pulls down out of the rear seatback to offer an extra touch of comfort plus a pair of accommodating cup holders.



OPEN SPACE. Two handy remote release levers inside the spacious 15.2 cu ft trunk control the 60/40 split fold-down rear seatbacks. One pull and either seatback quickly folds forward to provide a more expansive cargo area.



A THOROUGHLY MOVING EXAMPLE OF QUALITY IN QUANTITY.

Insightful engineering, quality materials and meticulous craftsmanship surround you in the MAZDA6. Rewarding your touch and enhancing your driving experience. Its electroluminescent instrumentation (Luxury Package) hints at the exhilaration ahead. The available Sport AT automatic transmission delivers both convenience and fun by allowing you to sequentially shift gears. A centralized "command center" intelligently integrates vital cabin controls to minimize driver distractions. Power windows include a driver's one-touch-down feature to make drive-thrus, and real life, easier to deal with. The center console armrest offers dual covered storage compartments plus a handy 12V power point. Versatile door panel cup holders also welcome water bottles. Other features work their magic unseen—including the electronic lockout protection and the ventilation system's built-in pollen filter.



EVEN THE WIND QUIETLY WHISPERS ITS APPROVAL.



AN AWARD-WINNING DESIGN THAT CLEARLY REWARDS DISCRIMINATING DRIVERS.

Beneath the MAZDA6's sleek, athletic exterior is the kind of ingenious engineering that makes the world's automotive press sit up and take notice. Since its debut in 2002, the MAZDA6 has won more than 50 prestigious international awards—including being named an *Automobile Magazine* 2003 All-Star; a *Car and Driver* 2003 10Best (MAZDA6 s); and "Best Midsize Sedan," "Car Guide, 2003: The Year's Best Buys," March 2003, *MONEY*® magazine. And in frontal crash tests for driver and front-seat passenger conducted by the National Highway Traffic Safety Administration (NHTSA),* the MAZDA6 earned Five Stars, the highest rating possible. From its inspiring performance to its reassuring safety features, the MAZDA6 is engineered to impress.



REAL RESTRAINT. Dual two-stage front air bags* that help match inflation speed to an impact's severity, whiplash-reducing front seat headrests, plus 3-point safety belts for all five occupants are standard on the MAZDA6. Front seat side-impact air bags and side-curtain air bags (shown) for front and rear passengers are available.

*Always wear your safety belt and secure children in the rear seat.



*5-STAR SAFETY RATING

For complete test results, visit: www.nhtsa.dot.gov

1 EXHAUST NOTES. The MAZDA6's corrosion-resistant, stainless steel exhaust system ends in true sports-sedan fashion with dual exhaust outlets and bright tips.

2 ROOM ADDITION. The compact design of the MAZDA6's patented multilink rear suspension helps make the car's expansive 15.2 cu. ft. trunk possible.

3 STOP SIGNS. Four-wheel disc brakes with a zero-loss-travel brake booster are standard. An advanced Anti-lock Brake System (ABS) with traction control is standard on the s and available on the i.

4 SHOW OF STRENGTH. Mazda's "Triple H" construction adds extra steel reinforcements to critical frame components—enhancing structural integrity, impact protection and handling.

5 SAFER BY THE FOOT. The MAZDA6's "crushable" pedal assembly is engineered to fold away in an accident—reducing the chance of a serious ankle or leg injury.

6 PROTECTIVE PERSONALITY. Extensive designed-in crumple zones, front and rear, help protect occupants by helping to absorb the energy of a collision.



TWO INCREDIBLY COMPELLING REASONS WHY MAZDA'S GOT YOUR NUMBER.

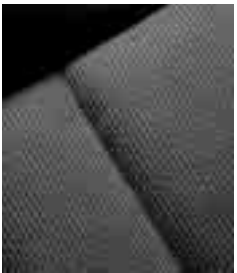
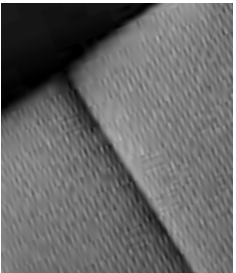
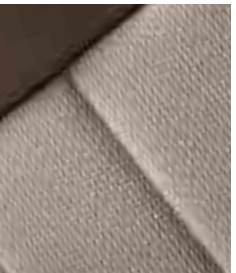



There's a MAZDA6 sports sedan engineered to fit both your driving style and your budget. The well-equipped MAZDA6*i* comes standard with a responsive 160-hp MZR 2.3-liter I-4, a 5-speed close-ratio manual gearbox as well as 16-inch wheels. MAZDA6*s* features the added punch of a 220-hp MZI 3.0-liter V6, stunning 17-inch alloys, an advanced Anti-lock Brake System (ABS) with traction control, fully automatic climate control and more. So which MAZDA6 is right for your right foot? Drive it. You'll know.

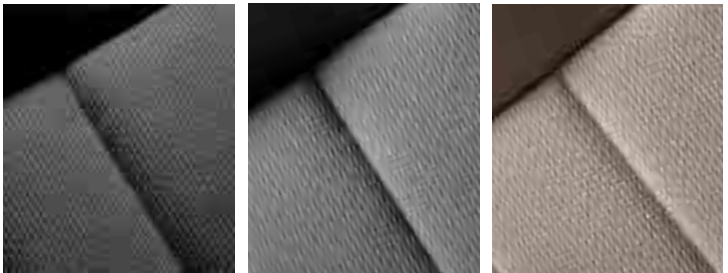


AND NOW, A PREVIEW OF OUR NEWEST THRILL RIDES.

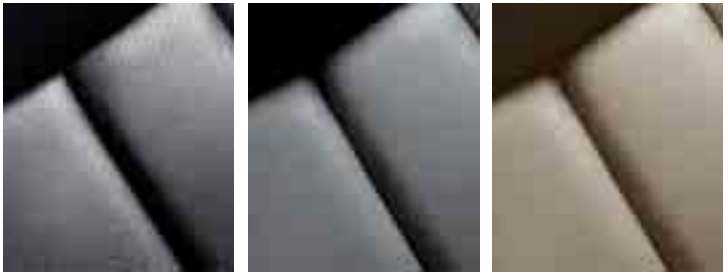
Early in 2004, a good thing gets even better with the arrival of two new additions to the innovative MAZDA6 family: A stylish new MAZDA6 5-Door that integrates the added versatility of a sleek rear hatch with the stunning good looks of an aggressive Sport Package. And a sophisticated new MAZDA6 Sport Wagon that combines the extra cargo space you want with the extra exhilaration of a 220-hp V6. In short, the evolution of the sports sedan never looked better.



INTERIOR FEATURES	MAZDA6i	MAZDA6s	OPTIONS AND OPTION PACKAGES	MAZDA6i	MAZDA6i	MAZDA6s	MAZDA6s	SPECIFICATIONS	MAZDA6i	MAZDA6s	INTERIOR FABRICS
				Manual	Automatic	Manual	Automatic		MAZDA6i	MAZDA6s	
<ul style="list-style-type: none"> Dual 2nd-generation 2-stage front air bags* Reclining front bucket seats with adjustable head restraints Manual driver's seat height adjustment 8-way power driver's seat with lumbar support Fold-down rear armrest with cup holders 60/40 split fold-down rear seatback w/remote operation LATCH child-safety seat anchors in rear seat Cloth-trimmed upholstery Carpet floor mats Covered dash-top storage compartment Center console armrest with covered dual storage compartments and 12V power point Center instrument display panel (clock, audio, climate control, outside ambient temperature) Dual front cup holders with cover Power windows with driver's 1-touch-down feature Power door locks with 2-stage unlocking Remote keyless entry system with 2 transmitters Engine-immobilizer antitheft system Antitheft perimeter alarm system Overhead sunglasses holder; front and rear map lights Power remote trunk-lid release; trunk light Dual illuminated vanity mirrors with flip-up covers Tachometer Tilt/telescopic steering column Leather-wrapped 3-spoke steering wheel w/audio controls Leather-wrapped gearshift knob Cruise control w/steering-wheel-mounted controls Rear-seat heater ducts CFC-free air conditioning w/pollen filtration Fully automatic climate control AM/FM/CD stereo with 6 speakers, digital clock 	S	S	<ul style="list-style-type: none"> Sport Package: Sport-type front and rear fascias; side sill extensions; rear wing spoiler; fog lights; oval exhaust tips; titanium-look window-switch bezels Sport Package—without Rear Spoiler: Sport Package contents, minus rear wing spoiler Security Package: Anti-lock Brake System (ABS) with Electronic Brakeforce Distribution (EBD); Traction Control System (TCS); front side-impact air bags; side air curtains; antitheft alarm system Luxury Package: Leather-trimmed upholstery†; 8-way power driver's seat; heated mirrors and front seats; electroluminescent gauges with red illumination Bose® Audio Package: 200-watt Bose® speaker system with 4 full-range speakers, 2 tweeters and separately amplified subwoofer; in-dash 6-disc CD changer Appearance Package (not available with Sport Package): Front air dam; side sill extensions; rear bumper skirt; oval exhaust tips Chrome Appearance Package: Chrome front grille trim; side protector moldings; rear finisher Sport AT 4-speed automatic transmission Sport AT 5-speed automatic transmission Anti-lock Brake System (ABS) with Electronic Brakeforce Distribution (EBD); Traction Control System (TCS) Front seat-mounted side-impact air bags*; side air curtains with coverage for front and rear seats 8-way power driver's seat Power sliding-glass moonroof with sunshade Sport grille (n/a with Chrome Appearance Pkg.) Fog lights (mount in lower, outer grille openings; not available with Sport Package) Rear spoiler, wing type Rear spoiler, lip type (not available with Sport Package) Aluminum fuel-filler door (chrome or satin finish) All-weather floor mats Rear mud guards (not available with Sport Package) Cassette player In-dash 6-disc CD changer Compass auto-dimming mirror with or without HomeLink® Moonroof wind deflector (requires moonroof) Cargo organizer with tray Cargo tray Cargo net Alarm shock sensor upgrade Wheel locks (4) Door edge guards, color-keyed 	O ¹	O ¹	O	O	Engine size and type 2.3L DOHC 16-valve 4-cylinder with Variable Valve Timing dual counter-rotating balance shafts Horsepower, SAE Net 160 @ 6000 rpm 220 @ 6300 rpm Torque, SAE Net lb-ft 155 @ 4000 rpm 192 @ 5000 rpm EPA estimated fuel economy city/hwy (mpg) manual 24/32 automatic 22/29 manual 19/27 automatic 19/27 Curb weight manual 3045 lb automatic 3093 lb manual 3241 lb automatic 3309 lb	  		
				O ^{1,5,6,7,8}	O ^{1,5,6,7,8}	O ^{6,7,8,9}	O ^{6,7,8,9}	EXTERIOR DIMENSIONS (inches) Wheelbase/overall length 105.3/186.8 Overall width 70.1 Overall height 56.7 Track, front/rear 60.6/60.6	MAZDA6i 24/32 22/29 3045 lb 3093 lb	MAZDA6s 220 @ 6300 rpm 192 @ 5000 rpm 19/27 19/27 3241 lb 3309 lb	  
				O/A	O/A	O/A	O/A	INTERIOR DIMENSIONS (inches) Headroom/with moonroof 38.7/38.0 Legroom 42.3 Shoulder room 56.1	MAZDA6i front 38.7/38.0 42.3 56.1	MAZDA6s rear 37.1/37.1 36.5 54.9	BLACK CLOTH Optional Sport Package MAZDA6
				O/A	O/A	O/A	O/A	CAPACITIES EPA passenger volume (cubic feet) 96 EPA cargo volume (cubic feet) 15 Fuel capacity (U.S. gallons) 18.0	MAZDA6i 96 15 18.0	MAZDA6s 96 15 18.0	BLACK PERFORATED LEATHER With Optional Sport and Luxury Packages only MAZDA6
				O/A	O/A	O/A	O/A	EXTERIOR COLORS			GRAY CLOTH Standard MAZDA6
				O/A	O/A	O/A	O/A	Onyx Black • MAZDA6 • MAZDA6 with Sport Package	Blazing Copper Metallic • MAZDA6 with Sport Package	Steel Gray Metallic • MAZDA6 • MAZDA6 with Sport Package	BEIGE CLOTH Standard MAZDA6
				O/A	O/A	O/A	O/A	Lapiz Blue Metallic • MAZDA6 • MAZDA6 with Sport Package	Pebble Ash Metallic • MAZDA6 • MAZDA6 with Sport Package	Redfire Metallic • MAZDA6 • MAZDA6 with Sport Package	BLACK PERFORATED LEATHER With Optional Sport and Luxury Packages only MAZDA6
				O/A	O/A	O/A	O/A	Glacier Silver Metallic • MAZDA6 • MAZDA6 with Sport Package	Performance White • MAZDA6 • MAZDA6 with Sport Package	Sepang Green Metallic • MAZDA6 • MAZDA6 with Sport Package	GRAY PERFORATED LEATHER Optional Luxury Package MAZDA6
				O/A	O/A	O/A	O/A				BEIGE PERFORATED LEATHER Optional Luxury Package MAZDA6



BLACK CLOTH
 Optional Sport Package MAZDA6
GRAY CLOTH
 Standard MAZDA6
BEIGE CLOTH
 Standard MAZDA6



BLACK PERFORATED LEATHER
 With Optional Sport and Luxury Packages only MAZDA6
GRAY PERFORATED LEATHER
 Optional Luxury Package MAZDA6
BEIGE PERFORATED LEATHER
 Optional Luxury Package MAZDA6

S : Standard O : Optional P : Package A : Dealer-installed accessory — : Not available* Always wear your safety belt and secure children in the rear seat. † Seating surfaces upholstered in leather except for leather-look vinyl on seat side panels, rear sides of seat backs and other minor areas.

www.MazdaUSA.com
 Wherever you see this symbol, you can get the whole story on our interactive Web site.



ONYX BLACK
 • MAZDA6
 • MAZDA6 with Sport Package



BLAZING COPPER METALLIC
 • MAZDA6 with Sport Package



STEEL GRAY METALLIC
 • MAZDA6
 • MAZDA6 with Sport Package



LAPIS BLUE METALLIC
 • MAZDA6
 • MAZDA6 with Sport Package



PEBBLE ASH METALLIC
 • MAZDA6
 • MAZDA6 with Sport Package



REDFIRE METALLIC
 • MAZDA6
 • MAZDA6 with Sport Package



GLACIER SILVER METALLIC
 • MAZDA6
 • MAZDA6 with Sport Package



PERFORMANCE WHITE
 • MAZDA6
 • MAZDA6 with Sport Package



SEPANG GREEN METALLIC
 • MAZDA6
 • MAZDA6 with Sport Package

MECHANICAL FEATURES	MAZDA6i	MAZDA6s	EXTERIOR FEATURES	MAZDA6i	MAZDA6s
2.3L DOHC MZR 16-valve 4-cylinder engine	S	—	16-inch steel wheels with full wheel covers	S	—
3.0L DOHC MZI 24-valve V6 engine	—	S	16-inch alloy wheels	O	—
5-speed manual overdrive transmission	S	S	17-inch alloy wheels	O	S
Power-assisted rack-and-pinion steering with engine-speed-sensing variable assist	S	S	P205/60R16 steel-belted all-season radial tires	S	—
Power-assisted 4-wheel disc brakes	S	S	P215/50R17 steel-belted all-season radial tires	O	S
Double-wishbone front suspension with stabilizer bar	S	S	Dual body-color power remote mirrors	S	S
E-type multilink rear suspension with stabilizer bar	S	S	Clear-lens halogen headlights with automatic shutoff	S	S
			Rear roof-mounted radio antenna; rear window defogger	S	S
			Dual exhaust outlets with bright tips	S	S
			2-speed variable-intermittent windshield wipers	S	S
			Front mud guards (not available with Sport Package)	S	S

*Requires 17-inch alloy wheels †Requires 16-inch alloys plus Bose® and moonroof, or Sport Package ‡Requires Luxury Package, Sport and Security Packages, or 16" alloys and power seat §Requires Sport Package ¶Requires Security Package **Requires Luxury Package ††Requires Bose® Audio Package ‡‡Requires power moonroof †††Requires side air bags & side air curtains ††††Requires alloy wheels †††††Requires Sport Package, Luxury Package or 16" alloys and power seat

A MORE EXHILARATING ROUTE TO MAKING THE RIGHT CHOICE.

It starts with the **Mazda Test-Drive Experience**—a uniquely designed road trip engineered to take you miles beyond the ordinary test drive. It's all about putting a Mazda to the test under real-world conditions. Down local streets, highways, on-ramps and off-ramps. Through straightaways, S-curves and corners. It's also all about discovering the superb acceleration, braking, steering, handling and ride quality that every Mazda offers. And rediscovering that fun, connected-to-the-road feeling we call "Zoom-Zoom."

A MORE LIBERATING APPROACH TO OWNER PEACE OF MIND.

Once you become a new Mazda owner, you'll enjoy the peace of mind the **2004 Mazda Driver's Assurance Plan** delivers. It includes the freedom of a **48-month/50,000-mile "bumper-to-bumper" limited warranty**, plus **24/7 Emergency Roadside Assistance**. And should your MAZDA6 require a warranty repair, the **Mazda Service Transportation Solution** can typically provide another vehicle to drive. After all, we want your new Mazda to be a source of pride and exhilaration for years to come. (See your Mazda dealer for details.)

A MORE COMPELLING WAY TO CONNECT WITH ZOOM-ZOOM.

Speaking of exhilaration, add Mazda's Web site to your list of must-see destinations. You can preview the new 2004 Mazdas. Look into seasonal incentives or special service offers. Pick up maintenance tips. Visit the Mazda Performance Corner for updates on driving technology, tuning and motorsports. Interactively "build" the MAZDA6 of your dreams and see how it will look. Request a quote. Even locate a Mazda dealer. It all translates into a lot more Zoom-Zoom at: MazdaUSA.com

ACCESSORIES AVAILABLE THROUGH YOUR MAZDA DEALER

- Sport grille
- Chrome front grille trim
- Fog lights
- Front mask
- Side sill extensions
- Door edge guards
- Chrome side protector moldings
- Moonroof wind deflector
- 17-inch alloy wheels
- Aluminum fuel-filler door (in chrome or satin finish)
- Rear wing spoiler
- Chrome rear finisher
- Rear mud guards
- Large-diameter exhaust tips
- Clear taillight kit
- Windshield sunscreen
- Compass auto-dimming mirror
- Compass auto-dimming mirror with HomeLink®
- Silver/Black 2-tone steering wheel rim
- Silver/Black 2-tone gearshift knob
- Silver/Black 2-tone parking-brake handle
- All-weather floor mats
- In-dash 6-disc CD changer
- Cassette player
- MP3 player
- MiniDisc player
- Cargo tray
- Cargo organizer with tray
- Cargo net
- Alarm shock sensor upgrade
- Car cover
- Car cover cable lock
- First aid kit
- Roadside emergency kit
- Wheel locks
- Engine block heater
- Touch-up paint



REAR LIP SPOILER. Smooth design has been carefully integrated with the contours of the trunk lid. Includes center high-mount brake light. Available in all exterior colors.



FRONT AIR DAM. Give your MAZDA6 a ground effects racer look, especially when combined with the available side sill extensions and rear bumper skirt. Available in all exterior colors.



REAR BUMPER SKIRT. Add a ground effects look to your MAZDA6 with this rear skirt. Available in all exterior colors.

All Genuine Mazda Accessories, if installed by a Mazda dealer prior to or at initial vehicle retail delivery, carry the same new-vehicle limited warranty as the MAZDA6. Ask your dealer for details.

PRODUCT CHANGES AND OPTIONS AVAILABILITY: Following publication of this brochure, certain changes in standard equipment, options, prices and the like, or product delays may have occurred which would not be included in these pages. Your Mazda dealer is your best source for up-to-date information. Mazda reserves the right to change product specifications at any time without incurring obligations. Options shown or described in this brochure are available at extra cost and may be offered only in combination with other options or subject to additional ordering requirements or limitations.



ZOOM-ZOOM