

# 1969 DART/CORONET/CHARGER/POLARA/MONACO



HUNTER DODGE  
499 SOUTH HUNTER BLVD.  
BIRMINGHAM, MICH., 48008

This year,  
**DODGE**

is turning up the  
*fever*



# 1969 DODGE CHARGER

How do you improve on the Success Car of the Year? Just look.

A 343% sales increase last year, and we're not through yet. The new 1969 Charger is still five-passengers big—more trim, more shapely. Once you've seen it for yourself, you'll agree that the 1969 Dodge Charger (the only family-sized sports car) is a beautiful success. Again.

This year, you have more Charger models from which to choose. First, there's the standard Charger—the kind of car most people would sacrifice anything to own. Fortunately, they won't have to.

Next, there's Charger R/T—leader of the Dodge Scat Pack. (The entire Pack is lined up for inspection on page 13.) Charger R/T is the supershape with the aggressive Dodge 440-cu.-in. Magnum V8 under the hood. Rock-steady on its special heavy-duty R/T Rallye Suspension. Controlled by oversized police-type drum brakes. Bucket seats and your choice of either the full synchromesh 4-on-the-floor or 3-speed TorqueFlite automatic transmission are standard equipment.

1969 Dodge Charger.



This year, there's still another Charger model. The "SE" for "Special Edition." This is the Charger for the man who knows the feel of real leather when he sits on it. Available on either the standard Charger or R/T chassis. It's all here. And all standard. Genuine leather and vinyl foam-padded front buckets, sports-type steering wheel, Light Convenience Package, simulated wood-grained instrument panel insets and hood-mounted turn signal indicators.

Another Charger model, the Charger 500, available only with the 426-cu.-in. Hemi V8, is offered specifically for the high-performance racetrack (not suitable for street use). This model is available only to qualified performance participants and is being built on a limited-production basis.

Charger options and accessories.....page 17  
Charger engines, transmissions, etc.....pages 18-19

Charger R/T goodies (right): 4-on-the-floor, bumblebee stripes. (Please note: Center console, sports-type steering wheel, and electric windows are optional.\*)

Sumptuous Charger SE (far right) with real leather on the front buckets and simulated wood-grained insets—automatic transmission, center console optional.

## Charger Standard Equipment

1. The Charger includes:
  - 318-cubic-inch V8 (or 225 Six)
  - Three-speed manual transmission
  - All-vinyl front bucket seats
  - All-vinyl utility door pockets
  - Deep-pile carpeting (front and rear)
  - 3-spoke steering wheel with padded hub
  - Heater/defroster
  - Electric clock with regulator
  - Cigarette lighter
  - Self-adjusting brakes
  - Heavy-duty suspension, including torsion bars, heavy-duty rear springs, and front sway bar
  - Choice of 18 standard exterior colors
  - Front and rear bumper guards.

2. The Charger SE (Special Edition) includes all standard equipment items, except for these changes and additions:
  - Genuine leather and vinyl front bucket seats
  - Sports-type simulated wood-grained steering wheel with padded hub\*
  - Deep-dish wheel covers\* (hubcaps are standard on regular Charger models)
  - Hood-mounted turn signal indicators\*
  - Simulated wood-grained-finish instrument panel trim
  - Charger "Light Group"\* (includes ashtray light, glove box light, map light, trunk compartment light, time-delay ignition switch light, and head-lamp-on reminder—it buzzes

when door is opened).

3. The Charger R/T includes the standard Charger equipment, except for these changes and additions:
  - 440-cubic-inch Magnum V8, with 4-barrel carburetor and dual exhausts with chromed tips
  - TorqueFlite automatic transmission\*
  - Heavy-duty manually adjustable brakes\*
  - F70x14 Red Line wide-tread tires\*
  - R/T Handling Package, including special torsion bars, Firm Ride shock absorbers,\* extra-heavy-duty rear springs, and front sway bar
  - Bumblebee racing stripes.

Note: Charger R/T models can also be ordered with the SE (Special Edition) equipment.

## Specifications

### DIMENSIONS

Wheelbase . . . 117".  
Overall length, width,  
height . . . 208.0"/76.6"/53.2".  
Track; front/rear . . . 59.5"/59.2".

### SUSPENSION

Charger has heavy-duty suspension and Oriflow shocks at each wheel. Charger R/T has a special Handling Package and heavy-duty shocks.

### BRAKES

Hydraulic, servo-contact, self-energizing, with bonded linings. Parking brake is foot-operated, hand-released—mechanically actuating shoes on each rear wheel. Charger brakes are self-adjusting; 10"x2½", front and rear. Charger R/T brakes are manually adjustable; heavy-duty; 11"x3", front—11"x2½", rear.

### TIRES

Charger, 7.35 x 14, 5.5JK wheel (6-cyl. model only). Charger R/T, F70 x 14 Red Line wide-tread, 5.5JK wheel.

### ELECTRICAL SYSTEM

Battery, 12-volt, 6-cell, 48-amp-hr (225 Six and 318 V8), 59-amp-hr (383 V8s), 70-amp-hr (Magnum & Hemi V8s). Alternator, 37-amp, standard.



\*Starred items are also available, at extra cost, on other Charger models.



# 1969 DODGE DART

America's biggest reason for going compact.

First off, you have a bigger selection of Dart models this year. And each Dart is a beautifully roomy, nimble package—no matter how you wrap it. Naturally, we've kept Dart's prices "compact." For 1969, even savers can be swingers with our new Dart Swinger—best thing that ever happened to a compact budget. Enough two-door hardtop to take you anywhere. Room for six. And as much performance as you want (from economical gas-sipping Sixes to the 318 V-8).

Shown on this spread are all nine of the new Dodge Dart models for 1969. Once you've had a chance to see them for yourself, you'll agree that Dodge Fever comes in every size but small.

Dart high-performance cars ..... pages 12-13  
 Dart options, accessories ..... page 16  
 Dart engines, transmissions, etc. .... pages 18-19

### Standard Equipment

- 170 Slant Six or 273 V8 engine (GT, Custom, Swinger, and Dart models)
- 340 V8 (GTS and Swinger 340)
- 3-speed manual transmission (GT, Custom, Swinger, and Dart models)
- 4-on-the-floor, fully synchronized manual transmission, with Hurst shifter (Swinger 340)
- 3-speed TorqueFlite automatic transmission (GTS models)
- Heater/defroster
- Lighter (opt. at extra cost on Dart sedan, Swinger and Swinger 340)
- 16 exterior colors (17, Swinger 340)

- 18-gallon fuel tank
- Self-adjusting brakes
- Spare tire storage in tirewell beneath luggage compartment floor
- Cleaner Air System
- Full carpeting\* (opt. at extra cost on Dart sedan and Swinger)
- 3-spoke steering wheel with padded hub and partial horn ring (horn button on Dart sedan, Swinger and Swinger 340)
- Seating:  
 GTS and GT convertibles: all-vinyl, full-width bench seats (buckets, optional)  
 GTS and GT hardtops: all-vinyl, front bucket seats, full-width bench seat in rear  
 Custom hardtop: all-vinyl full-width bench seats

Custom sedan: cloth-and-vinyl, full-width bench seats (all-vinyl seats, optional).  
 Swinger 340/Swinger/Dart: all-vinyl, full-width bench seats  
 Power top for convertibles  
 For GTS and Swinger 340 models:  
 Rallye Suspension  
 Firm Ride shocks  
 Power bulges on hood  
 Bumblebee stripes  
 Bright, dual exhaust pipes  
 D70 x 14 wide-tread tires (5.5J wheels) (Swinger 340)  
 E70 x 14 Red Line wide-tread tires (5.5J wheels) (GTS models)  
 Engine dress-up kit (GTS only)  
 \*Full carpeting in Swinger 340 is standard with standard 4-on-the-floor transmission; optional with optional 3-speed TorqueFlite automatic transmission. Rubber floor mats are standard on Dart sedan and Swinger (and on Swinger 340, when car is equipped with optional TorqueFlite automatic transmission).

### Specifications

#### Dimensions

- Wheelbase . . . 111"
- Track, front/rear . . . 57.4"/55.6"
- GTS, Swinger 340 track, f/r . . . 58.1"/56.3"
- Overall length . . . 195.4"
- Overall width . . . 69.6"
- Overall height (6-cylinder sedan) . . . 54.4"

#### Suspension

All Dart models have torsion bars and ball joints in front, asymmetrical leaf springs in the rear, and Oriflow shock absorbers at each wheel. The entire suspension is rubber-isolated. The Dart Rallye Suspension and Firm Ride heavy-duty shock absorbers are standard on GTS and Swinger 340 models, optional on other Dart models.

### Brakes

Front/rear (6-cyl.) . . . 9" x 2 1/8" / 9" x 2"  
 Front/rear (V8) . . . 10" x 2 1/4" / 10" x 1 3/4"  
 Dual Braking System. Hydraulic, servo-contact, self-energizing, self-adjusting. Bonded linings. Parking brake is hand-operated, hand-released—mechanically actuating shoes on each rear wheel. Power brakes are optional on all Dart models. Front disc brakes (14" wheels and tires are included) are also optional on all Dart models.

### Tires

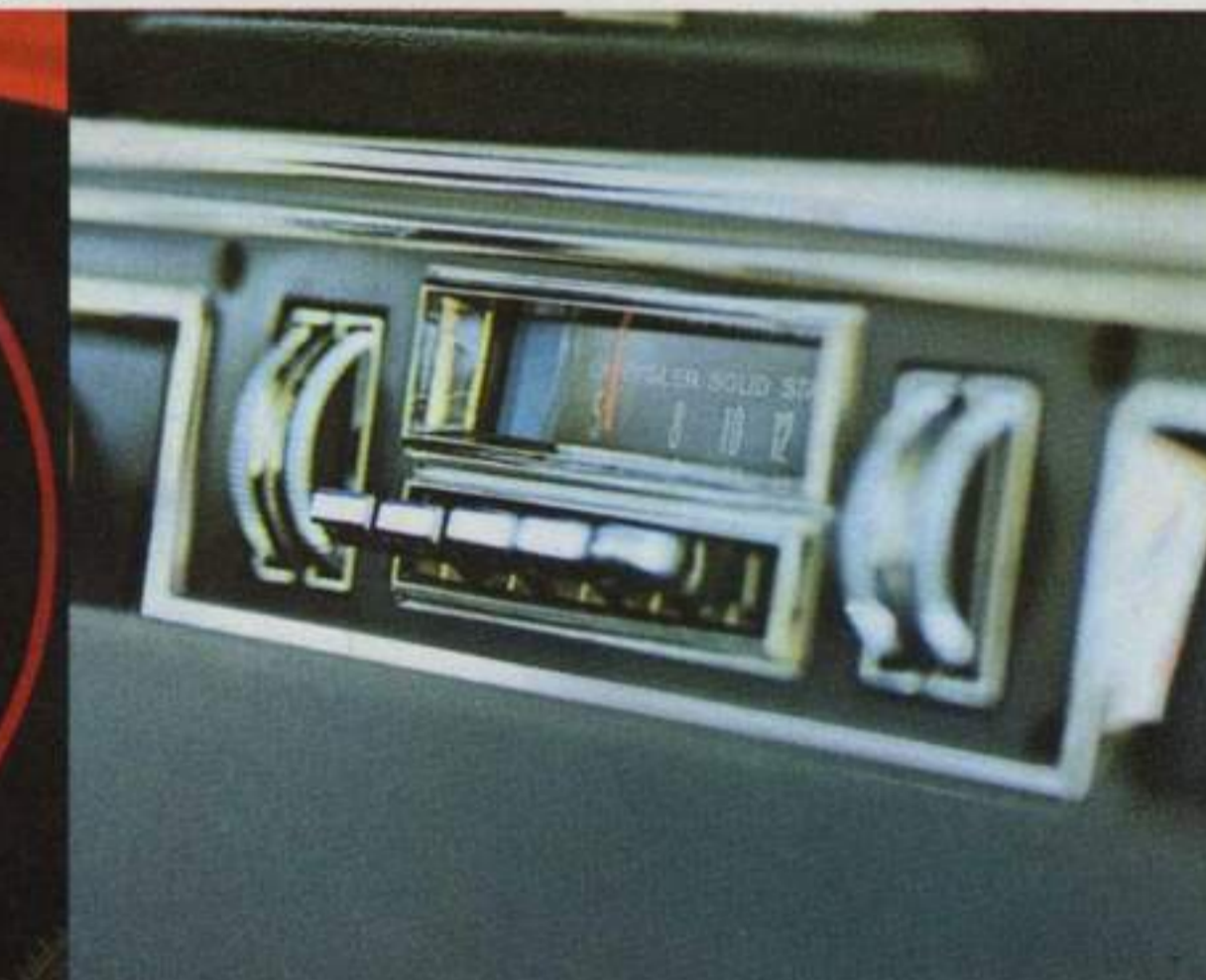
6-cyl. models (except convertibles) . . . 6.50 x 13 (170 Six only)  
 All 225 Six models (and 170 Six convertibles) . . . 7.00 x 13  
 V8 (except GTS and Swinger 340) . . . 7.00 x 13  
 GTS models . . . E70 x 14 wide-tread Swinger 340 . . . D70 x 14 wide-tread 14" wheels and tires are optional on all Dart models except Dart GTS and Swinger 340 models on which they are standard. Optional wide-tread tires require the addition of optional Rallye Suspension.  
 Also available are fiber-glass-belted tires. C78 x 14 fiber-glass-belted tires are optional on all models except Dart GTS and Swinger 340. E70 x 14 fiber-glass-belted tires are optional on all Darts and require the optional Rallye Suspension.

### Electrical System

Battery: 12-volt, 6-cell, 38-amp-hr, standard on 6-cylinder models; 48-amp-hr, standard on V8s. 59-amp-hr optional on all Dart models. Alternator: 30-amp standard on 6-cylinder models; 37-amp standard on V8s (and Sixes with air conditioning). 46-amp alternator is optional with 6 or V8 and standard with air conditioning on V8 models.



Dart Swinger hardtop.



Dart Swinger 340 hardtop . . .

Inside: Pleated, all-vinyl trim is optional. (All-vinyl trim is standard.)

Dress up the wheels! 3 different types offered on Dart!

Check out Dart's options. Page 16.

Vinyl roof covering. Optional on all hardtops, Custom sedan.

Dart has a long list of reassuring standard safety items.

You can have your Dart transmission one of five different ways this year.



Dart GTSport convertible.



Dart GT convertible.



Dart Custom hardtop.



Dart Swinger 340 hardtop. 340 (4-bbl.) V8 power standard! 4-on-the-floor with Hurst shifter standard!



Dart GTSport hardtop.



Dart GT hardtop.



Dart Custom 4-door sedan.



Dart 4-door sedan.





# 1969 Dodge Coronet

It's very big for its price.

Can six full-scale adults find happiness in a small-priced car? Must foam-padded comfort grace only the expensive cars? Dodge Coronet to the rescue! Comes in 17 lively models (including a corral full of station wagons, shown elsewhere in the catalog). They range all the way to Coronet 500 with sporty luxuries like bucket seats and rich vinyl trim. Only Coronet has the wide selection of power (from Slant Six to sizzling 426 Hemi V8). Your budget never looked better. The sticker price on the window tells the real Coronet story—Coronet for 1969 is a lot of car at a very low price. This year, Dodge is turning up the Fever. New Coronet is one of the "turn up" cars from Dodge.

## 1969 CORONET STANDARD EQUIPMENT

Full-width bench seats (bucket seats in Coronet R/T and 500 hardtop)  
Carpet, passenger area (rubber floor mats in Coronet Deluxe)

### Engines:

- 225 Six (Coronet 440 and Deluxe, N.A. 440 3-seat wagon)
- 318 V8 (Coronet 500, 440 and Deluxe)
- 383 Magnum V8 (Super Bee only)
- 440 Magnum V8 (Coronet R/T only)

### Transmissions:

- Three-speed manual (Coronet 500, 440 and Deluxe)
- Four-speed manual\* (std., Super Bee)
- TorqueFlite automatic\* (std., Coronet R/T)

### Heater/defroster

Wood-grained (simulated) instrument panel applique (Coronet R/T and 500)

Extra-thickness foam seat cushions\* (Coronet R/T and 500)

Lights: ashtray, map, glove box\* (Coronet R/T and 500)

Rear door automatic interior lamp switch\* (Coronet 500 sedan and wagons)

Cigarette lighter

Sill mouldings (Coronet R/T)

Wheel lip mouldings (Coronet R/T, Super Bee, 500 and 440)

Wood-grained (simulated) body applique (Coronet 500 wagons only)

Station wagon Dual Action tailgate (all Coronet wagons)

Brake and accelerator pedal dress-up kit\* (Coronet R/T and 500)

Power convertible top (Coronet R/T and 500)

### (FIRST ROW, LEFT TO RIGHT)

- Coronet R/T 2-door hardtop.
- 440 Magnum standard.
- Coronet Super Bee coupe.
- 383 Magnum standard.
- Coronet 500 4-door sedan.
- Coronet 440 4-door sedan.

### (SECOND ROW, LEFT TO RIGHT)

- Coronet R/T convertible.
- Coronet 500 2-door hardtop.
- Coronet 440 2-door hardtop.
- Coronet Deluxe coupe.
- (Lowest priced Coronet for 1969.)

### (THIRD ROW, LEFT TO RIGHT)

- Coronet Super Bee 2-door hardtop.
- Coronet 500 convertible.
- Coronet 440 coupe.
- Coronet Deluxe 4-door sedan.

\*Starrred items are optional on most other Coronet models.

## Standard on Coronet R/T and Super Bee:

- Heavy-duty 11" drum-type brakes\*
- Rallye Suspension with sway bar\*
- Red Line wide-tread tires, F70x14\*
- Firm Ride shock absorbers\*
- Hood with special "Power Bulge"
- Bumblebee stripes

## SPECIFICATIONS

### DIMENSIONS

#### SEDAN:

- Wheelbase . . . 117" • Track, front/rear (six-cyl.) . . . 59.5"/58.5"
- Track, front/rear (V8) . . . 59.5"/59.2" • Overall length . . . 206.6"
- Overall width . . . 76.7" • Overall height (six-cyl.) . . . 54.5"

### SUSPENSION

All Coronet models have torsion bars and ball joints in front, asymmetrical leaf springs in the rear, Oriflow shocks at each wheel. Entire suspension is rubber-isolated.

Coronet R/T and Super Bee come equipped with Rallye Suspension, a special Handling Package, which includes: HD torsion bars, Firm Ride shocks, sway bar, and XHD rear springs.

An optional Rallye Suspension Package is offered on all Coronet models, except R/T and Super Bee cars. Package includes: sway bar and HD rear springs. In addition, as a separate option, Firm Ride shocks are also available.

### BRAKES

Hydraulic, servo-contact, self-energizing, with bonded linings. Dual Braking System. Parking brake is foot-pedal-operated, with hand-release lever—mechanically actuating shoes on each rear wheel. Master cylinder/parking brake warning light is standard on all models. Power brakes are optional on all models, and front disc brakes are optional on all V8-powered Coronet models.

### TIRES

- Six-cyl.(except wagons) . . . . . 7.35 x 14
  - V8 models (except Super Bee, wagons & R/T) . . . . . 7.75 x 14
  - Coronet R/T and Super Bee . . . . . F70 x 14 wide-tread
  - Hemi V8 cars . . . . . F70 x 15 wide-tread
- Other Coronet V8 models can be equipped with F70 x 14 whitewall or Red Line wide-tread tires, at extra cost. Fiber-glass-belted tires are available as options in the following sizes: F78 x 14 whitewall (except wagons, Super Bee and R/T); F70 x 14 Red Line (except wagons and all six-cylinder models); F70 x 15 Red Line or whitewalls (except wagons).

### ELECTRICAL SYSTEM

Battery: 12-volt, 6-cell, 48-amp-hr (225 Six, 318 V8)  
59-amp-hr (383 V8s), 70-amp-hr (440 Magnum V8, Hemi V8)  
Alternator: 37-amp. is standard on all Coronet models.

- Coronet high-performance cars . . . . . pages 12-13
- Coronet station wagons . . . . . page 15
- Coronet options and accessories . . . . . page 16
- Coronet engines, transmissions, etc. . . . . pages 18-19





Polara 500 2-door hardtop



Interior of Polara 500 includes all-vinyl trim and bucket seats



Polara 500 convertible.



Polara 500 2-door hardtop.



Polara 2-door hardtop.



Polara convertible.



Polara 4-door hardtop.



Polara 4-door sedan.

## 1969 DODGE POLARA / Totally new, it is. Expensive, it isn't.

If you're looking for a big, luxurious new car that sports a low price, look no farther, big-car lovers. This is your year. 1969 Dodge Polara is your car. With such standard items as foam-padded seats, carpeting, and a 230-hp V8. Not to mention an all-new instrument panel and concealed windshield wipers. Eight great new models to choose from (including two big, bold, new station wagons, shown on page 15).

### STANDARD EQUIPMENT

318-cu.-in. V8 engine  
3-speed manual transmission  
Cloth-vinyl interior trim in Polara hardtops and sedan  
All-vinyl interior trim in Polara convertibles and station wagons  
Front bucket seats, with center cushion/folding armrest (in Polara 500 models)  
Concealed windshield wipers  
Deep-pile carpeting  
3-spoke steering wheel with padded hub  
Heater/defroster  
Cigarette lighter  
Glove box door lock  
Power top (Polara and Polara 500 convertibles)  
Foot-operated parking brake

Link-type sway bar  
Quiet door latches  
Choice of 17 exterior colors  
Deluxe wheel covers (Polara 500 models)  
Crank-operated vent panes (ventless door glass standard on two-door hardtops with air conditioning\*)  
Rear seat foam cushion pad  
24-gallon fuel tank (wagons, 22)  
Roof-mounted air deflector (wagons)  
Dual Action tailgate (wagons)

### SPECIFICATIONS

**Dimensions**  
(These are 1969 Polara 4-door-sedan dimensions. Other body styles may vary in some degree.)  
Wheelbase, 122" • Track, front/rear, 62.1"/60.7"

• Overall length, 220.8" • Overall width, 79.3"  
• Overall height, 56.8"

### Suspension

All Polara and Polara 500 models have torsion bars and ball joints in front, asymmetrical leaf springs in the rear, and Oriflow shock absorbers at each wheel. The entire suspension is rubber-isolated. A link-type sway bar is standard equipment. A Polara Rallye Suspension option for all models includes HD torsion bars, HD rear springs, and HD link-type sway bar. In addition, as a separate option, Firm Ride shocks are also available.

### Brakes

Hydraulic, servo-contact, self-energizing, self-adjusting. Bonded linings. Dual Braking

System. Parking brake is foot-pedal-operated, with hand-released lever—mechanically actuating shoes on each rear wheel. Master cylinder/parking brake warning light is standard on all models. Polara station wagon brakes are 11 x 3 (front), 11 x 2½ (rear). All other Polara and Polara 500 models have 11 x 2¾ (front), 11 x 2 (rear). Heavy-duty, manually adjusted brakes (11 x 3, front and rear) are optional, all Polara models. Power brakes are also optional, as are front wheel disc brakes.

### Tires

All Polara models (except wagons), 8.25 x 15 (5.5JJ wheels).  
Polara station wagons, 8.85 x 15 (6.0JJ wheels).  
15" wheels and tires are standard on all Polara models. Fiber-glass-belted white sidewall tires

are optional on all Polara models. Wide-tread fiber-glass-belted white sidewall tires are optional on Polara hardtops, convertibles and sedans.

### Electrical System

Battery: 12-volt, 6-cell, 48-amp-hr, standard on Polara and Polara 500 models equipped with 318 V8. 59-amp-hr, standard with 383-cu.-in. engines.\*70-amp-hr, standard with 440-cu.-in. engines\*and optional with other engines.  
Alternator: 37-amp, standard. (46-amp standard with air conditioning\*and optional on Polara models not so equipped.)

Polara station wagons . . . . . pages 14-15  
Polara options and accessories . . . . . page 17  
Polara engines, transmissions, etc. . . . . pages 18-19

\*Optional, at extra cost.





Monaco 2-door hardtop is also available with optional Monaco 500 Package.



Monaco 4-door hardtop interior is all-vinyl.

## 1969 DODGE MONACO / Now luxury comes in a brand-new shape.

The best from Dodge is new at first sight. 1969 Monaco is completely new, from cornering lights to wraparound taillights. From the distinctively shaped roof line to the luxurious new interiors. You even have a new, wider selection of options. Like the exclusive 40,000-candlepower Super-Lite,\* for highways. For 1969, we're introducing the new Monaco Brougham Package\* on 4-door hardtops and sedans. The important features in this Package, as well as in the Monaco 500 Package,\* are listed at the right.

Further to the right, take a close look at Monaco's interior. The soft look of luxury. The foam-padded seats. The deep-pile carpeting. All the room. Luxury driving was never in better shape. And Monaco's performance comes highly spirited. The big, 383-cubic-inch Dodge V8 is standard. The 1969 Dodge Monaco. See for yourself how new . . . how luxurious . . . it really is.

Monaco station wagons . . . . . page 15  
 Monaco options and accessories . . . . . page 17  
 Monaco engines, transmissions, etc. . . . . pages 18 & 19

### Standard Equipment

383-cu.-in. (2-bbl.) V8 engine  
 Three-speed manual transmission  
 Cloth-and-vinyl interior trim in Monaco 4-dr. sedan  
 All-vinyl interior trim in Monaco 2-dr. HT, 4-dr. HT and station wagons  
 Deep-pile carpeting  
 3-spoke steering wheel with padded hub and partial horn ring  
 Heater/defroster, cigarette lighter, glove box lock

Light Group  
 Power tailgate window (Monaco wagons)  
 Lockable 3rd seat well (3-seat wagons)  
 Foot-operated parking brake, link-type sway bar  
 Choice of 17 exterior colors  
 Deluxe wheel covers  
 Quiet door latches  
 Concealed windshield wipers and washers  
 Crank-operated vent panes (ventless side glass on 2-door hardtops with Airtemp air conditioning\*)  
 Front and rear foam seat-cushion pads  
 24-gallon fuel tank (wagons, 22)

### Specifications

#### DIMENSIONS\*\*

Wheelbase, 122". Track, front/rear, 62.1"/60.7".  
 Overall length, 220.8". Overall width, 79.3".  
 Overall height, 56.8".

#### SUSPENSION

All Monaco models have torsion bars and ball joints in front, asymmetrical leaf springs in the rear, and Oriflow shock absorbers at each wheel. The entire suspension is rubber-isolated. A link-type sway bar is standard equipment. A Monaco Rallye Suspension\* option for all models includes HD torsion bars, HD rear springs, and HD link-type sway bar. In addition, as a separate option, Firm Ride shocks\* are also available.

#### BRAKES

Hydraulic, servo-contact, self-energizing, self-adjusting. Bonded linings. Dual Braking System. Parking brake is foot-pedal-operated, with hand-released lever—

mechanically actuating shoes on each rear wheel. Master cylinder/parking brake warning light is standard on all models.

#### TIRES

All Monaco models  
 (except wagons) . . . . . 8.25 x 15 (5.5JJ wheels).  
 Monaco station wagons . . . . . 8.85 x 15 (6.0JJ wheels).

15" wheels and tires are standard on all Monaco models. Fiber-glass-belted white sidewall tires\* are available on all Monaco models. Wide-tread fiber-glass-belted white sidewall tires\* are available on Monaco hardtops and sedans.

#### ELECTRICAL SYSTEM

Battery: 12-volt, 6-cell, 59-amp-hr, standard with 383-cu.-in. engines, 70-amp-hr, standard with 440-cu.-in. engines\* and optional with other engines. Alternator: 37-amp, standard. (46-amp, standard with Airtemp air conditioning\* and optional on Monaco models not so equipped.)

#### MONACO BROUGHAM PACKAGE\*

(Available on sedan and four-door hardtop.)  
 • Split bench front seat with passenger recliner  
 • Vinyl roof • Brougham nameplate on roof pillars

#### MONACO 500 PACKAGE\*

(Available on two-door hardtop.)  
 • Bucket seats  
 • Center front seat cushion with armrest; or console  
 • "500" nameplate on front fenders

\*Optional, at extra cost.  
 \*\*These are 1969 Monaco 4-door-sedan dimensions. Other body styles may vary in some degree.



Monaco 2-door hardtop



Monaco 4-door hardtop.



Monaco 2-door hardtop.



Monaco 4-door sedan.





# 1969 DODGE SCAT PACK / Biggest Pack in the Performance Field

Eight great supercars for 1969. They all carry high-output V8s rumbling through dual exhausts. All track beautifully on specially designed Dodge heavy-duty suspensions.

Our 1969 Pack is led by the Great Shape. 1969 Dodge Charger R/T. Has the mighty, four-barrel, 440 Magnum V8—standard. Or you can order the most famous mill of all . . . our 426 Hemi.\* For 1969, there are two new versions of Charger R/T. One, the "Special Edition," offers more dressing—the sports flavor of genuine leather front bucket seats, simulated wood-grained trim and more.

1969 Coronet R/Ts earned their bumblebee stripes with the same spirit of Charger R/T . . . the spirit of the "Moving 440-cubic-inch Magnum." Coronet R/T comes completely performance-equipped, including extra-heavy-duty rear springs, wide-tread F70x14 tires and heavy-duty brakes.

The sting of Super Bee is in the form of a very special V8 called the "383 Magnum." (This engine hustles along under heads and valve gear from the 440 Magnum.) And this year, you can get a brand-new option with Super Bee. Ramcharger Air Induction System.\* It forces colder, denser outside air through the carburetor for added performance. Super Bee is all heart. No unnecessary frills. No fancy price.

Our most luxurious compacts with plenty of big V8 muscle—the Dart GTSports. Lively to look at . . . lively to drive—340 4-bbl. V8 is standard, and a special 383 4-bbl. V8 is optional.

And for even less money, you can drive the newest member of the Dodge Scat Pack. Swinger 340. For "live-it-up" kind of people with young budgets. Swinger 340 has the 4-bbl., 340-cubic-inch V8, Hurst four-on-the-floor—and all the goodies that make the Dodge Scat Pack go—as standard equipment.

Run with the Dodge Scat Pack—the exciting cars with bumblebee stripes—at your Dodge Dealer's.

## Charger R/T

**STANDARD EQUIPMENT**  
 440-cu.-in. (4-bbl.) Magnum V8  
 3-speed TorqueFlite automatic  
 All-vinyl bucket front seats  
 Deep-pile carpeting  
 3-spoke steering wheel, with padded hub and partial horn ring  
 Heater/defroster  
 Electric clock  
 Full instrumentation  
 Cigarette lighter  
 Choice of 18 standard exterior colors  
 Front and rear bumper guards  
 Concealed headlights  
 Quick-fill gas cap  
 20-gallon fuel tank  
 Heavy-duty brakes

**DIMENSIONS**  
 Pages 2-3

**SUSPENSION**  
 Rallye Suspension Package includes HD torsion bars, Firm Ride shocks, XHD rear springs and sway bar.

**TIRES**  
 Charger R/T with 440 Magnum V8 . . . F70x14 wide-tread (5.5 JK wheels).

## Coronet R/T and Super Bee

**STANDARD EQUIPMENT CORONET R/T**  
 440-cu.-in. (4-bbl.) Magnum V8  
 3-speed TorqueFlite automatic  
 All-vinyl bucket seats  
 Sill mouldings  
 Simulated wood-grain instrument panel applique  
 Power top on convertible

**CORONET SUPER BEE**  
 383-cu.-in. (4-bbl.) Magnum V8  
 4-speed manual transmission  
 All-vinyl bench seats

**STANDARD FOR BOTH**  
 Deep-pile carpeting  
 3-spoke steering wheel, with padded hub and partial horn ring  
 Heater/defroster  
 Cigarette lighter  
 Choice of 18 standard exterior colors  
 20-gallon fuel tank  
 Hood with special "Power Bulge"  
 Heavy-duty brakes

**DIMENSIONS**  
 Pages 6-7

**SUSPENSION**  
 Rallye Suspension includes HD torsion bars, HD shocks, XHD rear springs, sway bar and Firm Ride shock absorbers.

**TIRES**  
 F70x14 wide-tread (5.5 JK wheels).

## Dart GTSport and Swinger 340

**STANDARD EQUIPMENT**  
 340-cu.-in. (4-bbl.) V8  
 3-speed TorqueFlite automatic (GTS)  
 4-speed manual transmission with Hurst shifter (Swinger 340)  
 All-vinyl bench seats (Buckets on GTS hardtop)

Deep-pile carpeting  
 3-spoke steering wheel, with padded hub  
 Heater/defroster  
 Choice of 16 standard exterior colors\*  
 18-gallon fuel tank  
 Rallye Suspension  
 Bumblebee stripes  
 Performance hood  
 Bright dual exhaust tips

**DART GTSport ONLY**  
 Sill mouldings  
 Power top on convertibles

**DIMENSIONS**  
 Pages 4-5

**SUSPENSION**  
 Rallye Suspension includes HD torsion bars, HD rear springs (6 leaves), sway bar and Firm Ride shock absorbers.

**TIRES**  
 D70x14 wide-tread on 5.5J wheels. (Swinger 340)  
 E70x14 wide-tread on 5.5J wheels. (Dart GTS)  
 \*A special Bright Red is also available on Swinger 340 only.



Charger R/T.



Coronet Super Bee 2-door coupe, also available 2-door hardtop.



Coronet R/T hardtop, convertible also available.



Dart Swinger 340, 2-door hardtop



Dart GTS 2-door hardtop (convertible also available).

| 1969 SCAT PACK ENGINE AVAILABILITIES |                            |                   |                       |                         |   |
|--------------------------------------|----------------------------|-------------------|-----------------------|-------------------------|---|
| model availability                   | Dart Swinger 340 & GTSport | Dart GTSport only | Coronet Super Bee     | Coronet R/T Charger R/T | Coronet Super Bee Coronet R/T Charger R/T |
| displacement/cylinders               | 340-cu.-in. V8             | 383-cu.-in. V8    | 383-cu.-in. V8 Magnum | 440-cu.-in. V8 Magnum   | 426-cu.-in. V8 Hemi                       |
| bore x stroke (in.)                  | 4.04x3.31                  | 4.25x3.38         | 4.25x3.38             | 4.32x3.75               | 4.25x3.75                                 |
| carburetor                           | 4-bbl.                     | 4-bbl.            | 4-bbl.                | 4-bbl.                  | two 4-bbl.                                |
| compression ratio                    | 10.5:1                     | 10.0:1            | 10.0:1                | 10.1:1                  | 10.25:1                                   |
| exhaust system                       | dual                       | dual              | dual                  | dual                    | dual                                      |
| horsepower @ rpm                     | 275 @ 5000                 | 330 @ 5200        | 335 @ 5200            | 375 @ 4600              | 425 @ 5000                                |
| torque (lbs.-ft.) @ rpm              | 340 @ 3200                 | 410 @ 3600        | 425 @ 3400            | 480 @ 3200              | 490 @ 4000                                |
| fuel recommended                     | premium                    | premium           | premium               | premium                 | premium                                   |

\*Optional, at extra cost.

Dodge Scat Pack options & accessories . . . . .Pages 16 & 17  
 Dodge Scat Pack engines, transmissions, etc. . . . .Pages 18 & 19





## 1969 Polara station wagon

There it stands, bigger, more luxurious than ever. Roomier than any Polara wagon has ever been before. Roomy enough to carry 4 x 8 plywood sheets flat on its floor. The 1969 Polara wagon is loaded with new innovations, from controlled-beam turnpike Super-Lite\* on the grille to the new air deflector (standard equipment) that helps keep the tailgate window clear of dust and rain, and effectively bars the entrance of exhaust fumes when the window is open. And, of course, every new Polara wagon has the Dual Action tailgate. Inside, you'll find new storage bins, rich all-vinyl trim, carpeting in the passenger area, and lots more. 1969 Polara wagon—newer, bigger all over.

For more on the brand-new Polara wagon and all Dodge wagons, see the next page.



### Tailgate window washer/wiper

What it's all about is "Down with dirty back windows." Push a button, and the tailgate window goes down to be washed and wiped dry as it rises. The tailgate window washer/wiper is optional at extra cost on Dodge Monaco, Polara, and Coronet wagons.

### New air deflector

As air rushes over the roof, it meets the new built-in air deflector, which turns the wind across the tailgate window. Result—dust and rain are deflected. And you've got a wind barrier against exhaust fumes. The air deflector is one of many new standard features on Dodge Polara and Dodge Monaco wagons.



The new Dodge Polara is roomy enough for a dinghy, a den of Cub Scouts, the treasures of a day spent "antiquing" (a 150-year-old grandfather clock would fit nicely). Fact is, the 1969 Polara is just about as big and roomy as a station wagon can be.

Polara wagon options and accessories . . . page 17

Polara wagon engines/transmissions . . . pages 18-19



Monaco station wagon, 2-seat and 3-seat models. 383 V8, std.



Polara station wagon, 2-seat and 3-seat models. 318 V8, std.



Coronet 500 station wagon, 2-seat and 3-seat models. 318 V8, std.



Coronet 440 station wagon, 2-seat models—6 or V8 power. 3-seat models—power only.



Coronet Deluxe station wagon, 2-seat model only—6 or V8 power.



Dodge Sportsman. †



Dodge Custom Sportsman. †

# 1969 Dodge Wagons

## 1969 Dodge Monaco Wagons

Meet our 1969 luxury wagons. Their plushness shows at first sight. Completely new styling from grille to a special built-in air deflector designed to help keep the tailgate window clean. (Again this year, you can order the popular and effective tailgate window washer/wiper.\*) Inside, new styling has gone to the rich vinyl trim. Another plush idea is carpeting in the cargo area. You can also have your Monaco wagon equipped with a front passenger-recliner seat,\* controlled-beam Super-Lite,\* power windows,\* and power front seat.\* But 1969 Monaco wagons are still, after all, station wagons. And all the soft touches haven't gone to their toughness and capacity. They're big on cargo area . . . (big enough for a four-by-eight-foot sheet of plywood, for example). In fact, there's even more storage space this year . . . two bins over the left rear wheel, one over the right. And there's power to handle the cargo . . . or a full load of contented passengers. The big 383-cubic-inch V8 hustles on regular. And you can go all the way up to the mighty 4-bbl. 440 V8\* with dual exhausts. 1969 Dodge Monaco station wagons. A working kind of car never had it so luxurious.

## 1969 Dodge Polara Wagons

Inside, outside, all around the cargo space, Polara wagons are a whole new way to go. They're new, any way you look at them. The grille. The wrap-around taillights. Even something new for dusting off the tailgate window while you're moving. It's called an air deflector. (Note, clear window buffs: Again this year, you can push-button Polara's tailgate window to spotlessness with the amazing washer/wiper.\*) And a "new" story continues inside. Room enough for 4x8 sheets of plywood, a Little League team, a bunch of Brownies—and lots more. Polara wagons even have a new kind of storage bin. Two to the left. One to the right. Polara wagons' performance hums right along—big load or no. The lively 318 V8 is standard, which you can set to the tune of an automatic speed control.\* Other cool ideas are dual air conditioning\* or "dual air" with automatic temperature control.\* And with the eight-track stereo\* going, it's really quite easy to forget that Polara wagons are often used as working wagons. For work or fun, look into the big new 1969 Polara wagons.

For 1969, all Dodge station wagons feature the convenient Dual Action tailgate. Swings down or sideways for quick, easy loading.

## 1969 Dodge Coronet Wagons

Budget watchers, your attention, please. The 1969 Dodge Coronet wagons are here. All five of them. And not a one shows its low price. Start at the top . . . Coronet 500, with extra touches of uncommon luxury. The simulated wood-grained trim. The style, clean and refreshingly noticeable. And inside, all the room . . . room for you to stretch out in . . . room for a hefty, bulky load of cargo. And tasteful refinements that include foam-padded comfort and carpeting. You can even order your Coronet 500 wagon with bucket seats.\* And Coronet 500's performance is no little thing. A lively 318-cubic-inch V8 is standard. And the other lively Coronet wagons: the 440 and Deluxe. The styling . . . the room . . . the performance are all impressively there. Coronet 500 and 440 wagons come in both 2-seat and 3-seat models. The Coronet Deluxe wagon comes as a 2-seater only. (You can have this one or the 440 2-seater with a 6-cylinder engine, if you wish.)

And the optional tailgate window washer/wiper\* returns for its second popular year. Budget watchers, live a little . . . in a big way with a new Coronet wagon.

## 1969 Dodge Sportsman Wagons

Now with something even your wife can learn to love.

In important ways, the tough Dodge Sportsman wagons have gone soft. Now you can have them with power steering.\* And refreshing air conditioning\* (always a nice idea) is available, too.

And you'll get all the popular things that have made Dodge Sportsman wagons America's own best seller. The super-spacious cargo area. The extra-wide side and rear doors, with the convenient fold-out steps at the side. Full-foam bucket seats in front in a choice of four colors. And an impressive list of options, like an extra heater\* (for the rear compartment), heavy-duty suspension\* to increase load capacity to one ton, tinted windows,\* radio,\* antispin differential,\* and 3-speed automatic transmission.\*

And now, in the V8 Sportsman models, the 318-cubic-inch V8 is standard. It's the biggest V8 in its class. In the six-cylinder models, you have a choice of two spirited-but-economical Sixes.

In addition, there are several exciting innovations: a completely equipped traveling office,\*\* and a lavish hospitality unit\*\* that can be instantly adapted to almost any purpose.

See what's new with the Sportsman wagons at your Dodge Dealer's. Ask your Dealer for a copy of the special Dodge Sportsman wagon catalog.

†Both Sportsman and Custom Sportsman are offered in two wheelbases, 90" and 108".

\*Optional, at extra cost.

\*\*Dodge neither makes the actual conversion nor manufactures components for these special units. However, Dodge engineers work closely with leading independent converters to bring you the best units possible.

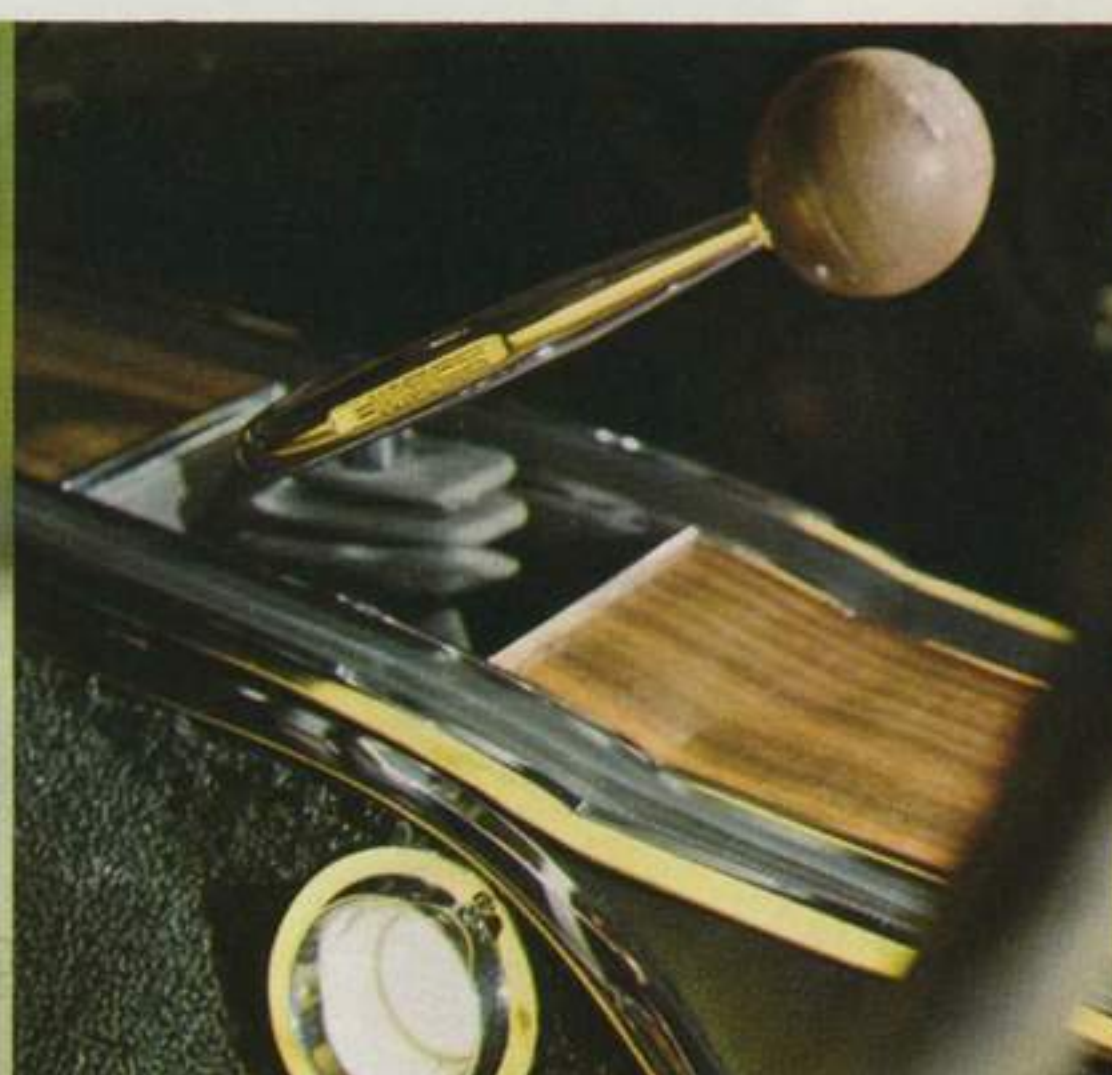




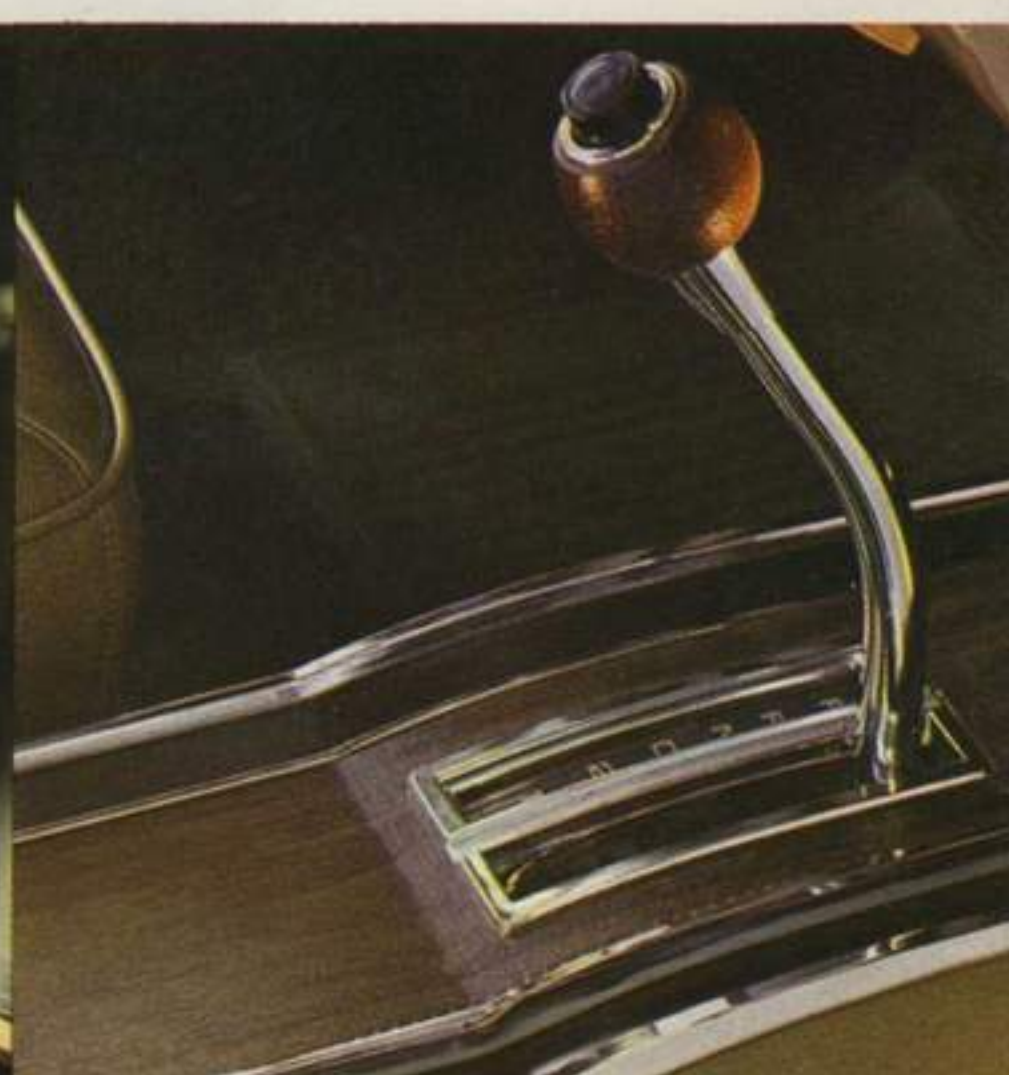
Charger R/T's four-on-the-floor, with Hurst linkage



Dodge Scat Pack—cars with bumblebee stripes



Coronet R/T's four-on-the-floor



Console-mounted TorqueFlite automatic



Automatic speed control, at tip of turn signal



Tilting steering wheel, for custom comfort



Clock/tach and speedometer (Charger SE, shown)



Cast aluminum road wheel

**1969 Dart Options**

Airtemp air conditioner (N.A. w/170 Six or 383 V8)  
 All-vinyl interior (Dart Custom 4-dr. sedan, std., other Dart models)  
 Brakes, front disc (require power brakes)  
 Bucket seats for convertibles  
 Bumper guards, front and rear  
 Cast aluminum 14" road wheels  
 Center console (with bucket seats only)  
 Color-keyed floor mats  
 Defogger, rear window (N.A., convertibles)  
 Deluxe wheel covers (opt. all models)  
 Differential, Sure Grip  
 Deep-dish, 14" simulated "mag" wheel covers (require 14" 5.5J wheels)  
 Engines (see page 18)  
 Extra-thickness, foam-padded front seat cushion (bench seat models)  
 Fender-top turn signal indicators  
 Full horn ring on steering wheel  
 Head restraints, color-keyed, front seats (left and right)  
 Hood insulation and undercoating  
 Light Convenience Package  
 Mirror, remote-control, outside, left  
 Mirror, outside, right (non-remote-control)  
 Pedal dress-up kit  
 Power brakes, power steering  
 Music Master AM radio

Solid-state AM-FM radio  
 Shoulder belts, rear seat, right and left (N.A. convertibles)  
 Shock absorbers, Firm Ride (std., GTS and Swinger 340, optional on other models)  
 16:1 fast manual steering (24:1 std.)  
 Sports-type, simulated wood-grained steering wheel, with padded hub  
 Suspension, Rallye (std., GTS and Swinger 340, opt. other models)  
 Tachometer (with bucket seats and optional console, V8s only)  
 Tinted windshield  
 Tinted windshield and windows  
 Tires, white sidewall  
 Tires, wide-tread, Red Line, E70 x 14 (std., GTS, optional on other models)  
 Transmissions, automatic or 4-on-the-floor (see page 18)  
 Trailer-Towing Package (see page 19)  
 Two-tone exterior paint (sedans and hardtops only, not convertibles)  
 Vinyl roof covering (all hardtop models, Custom 4-door sedan; in black, white affair, green antique, or tan)  
 Windshield wiper, variable-speed, electric (2-speed electric is standard)

**1969 Coronet Options**

Air scoops (simulated) on quarter panels (Super Bee and R/T only)  
 Airtemp air conditioner (N.A. Hemi, R/T

with four-speed, or with Ramcharger air induction system)  
 All-vinyl seat trim (Deluxe and 440 sedans)  
 Automatic speed control (V8 only)  
 Brakes, front disc (require power brakes, V8s only)  
 Brakes, drum, HD (standard with R/T and Super Bee; optional on all others)  
 Bucket seats (Super Bee; 500 Series sedans, wagons and convertibles)  
 Bumper guards, front and rear  
 Center cushion/fold-down armrest (bucket seat models)  
 Clock with automatic regulator (standard on Super Bee)  
 Color-keyed vinyl head restraints, front, left and right  
 Console with transmission shift control, locking map compartment and bull's-eye courtesy lamps (bucket seat models, except sedans and wagons)  
 Custom-Comfort six-way manually adjustable driver's seat (bucket seat models only)  
 Differential, Sure Grip

Engines (see page 18)  
 Extra-thickness foam-padded front seat cushion (Deluxe, 440 and Super Bee; std. on 500 Series bench seat models)  
 Fender-top turn signal indicators

Floor mats, color-keyed rubber  
 Light Convenience Package  
 Mirror, outside, left, remote-control  
 Mirror, outside, right (non-remote-control)  
 Pedal dress-up kit (std., 500 and R/T)  
 Power brakes, power steering  
 Power windows (hardtops and convertibles)  
 Radio, Music Master AM with push buttons  
 Radio, AM with eight-track stereo-tape player and multiple speaker system  
 Radio, solid-state AM-FM  
 Rallye instrument cluster with clock/tach (R/T only)  
 Rear seat speaker (coupes, hardtops and sedans)  
 Rear window defogger  
 Road wheels, chromed 14-inch  
 Road wheels, cast aluminum, 15-inch  
 Shoulder belts, rear seat (coupes, hardtops and sedans)  
 Shock absorbers, Firm Ride (std., R/T and Super Bee)  
 Shock absorbers, HD (R/T and Super Bee)  
 Sports-type steering wheel, wood-grained (simulated), with padded hub (440, 500, Super Bee and R/T)  
 Station wagon items: power tailgate window (std., 3-seat wagons), tailgate window washer/wiper, roof rack

Suspension, HD (std., R/T and Super Bee)  
 Tachometer, on instrument panel  
 Tinted windshield  
 Tinted windshield and windows  
 Tires, white sidewall  
 Tires, wide-tread, Red Line F70 x 14 (V8 models, standard on R/T and Super Bee)  
 Trailer-Towing Package (see page 19)  
 Transmissions (see page 18)  
 Two-tone paint (Deluxe, 440, 500 except convertibles and 500 wagons)  
 Undercoating and hood insulation  
 Vinyl roof covering—black, white affair, green antique, or tan (coupes, hardtops, 440 and 500 sedans)  
 Wheel covers, deluxe  
 Wheel covers, deep-dish  
 Wheel covers, mag-type  
 Windshield wipers, 3-speed electric with depressed park (2-speed electric, standard)

**1969 Charger Options**

Airtemp air conditioner (N.A. Hemi, R/T with four-speed or 225 Six with three-speed)  
 Automatic speed control (V8 only)  
 Brakes, front disc (require power brakes)  
 Brakes, drum, HD (standard with R/T)  
 Clock/tach (clock alone is standard)

Center console with bull's-eye courtesy lights  
 Center cushion, fold-down armrest (front)  
 Color-keyed vinyl head restraints, front seats, left and right  
 Custom-Comfort six-way manually adjustable driver's seat  
 Differential, Sure Grip  
 Door-edge protector mouldings  
 Engines (see page 18)  
 Full horn ring (partial ring, std.)  
 Light Convenience Package (std., on Charger SE)  
 Lockable gas cap (concealed beneath quick-fill cap, which is standard)  
 Luggage rack on rear deck lid  
 Mirror, left, outside, remote-control  
 Mirror, right, non-remote-control  
 Power steering, power brakes  
 Power windows  
 Radio: Music Master AM radio, Astrophonic AM deluxe radio, solid-state AM-FM radio, AM radio with eight-track stereo-tape player and three instrument-panel-mounted speakers for "orchestra shell" fidelity  
 Rear seat speaker  
 Rear window defogger  
 Road wheels, chromed (14" wheels only)  
 Road wheels, cast aluminum (15" wheels only)  
 Shock absorbers, Firm Ride (std.)

Charger R/T)  
 Shoulder belts, rear seat, left and right  
 Simulated wood-grained sports-type steering wheel with padded hub (standard on Charger SE)  
 Suspension, HD (standard on R/T)  
 Tinted windshield  
 Tinted windshield and windows  
 Tires: wide-tread, Red Line F70 x 14 (standard on Charger R/T)  
 Tires: wide-tread, Red Line, F70 x 15 (standard with Hemi V8)  
 Trailer-Towing Package (see page 19)  
 Turn signal indicators mounted directly in forward part of hood (standard on Charger SE)  
 Vinyl roof covering (in choice of black, white affair, green antique, or tan)  
 Wheel covers, deluxe  
 Wheel covers, deep-dish (standard on Charger SE)  
 Wheel covers, mag-type  
 White sidewall tires  
 Windshield wiper, 3-speed, electric (2-speed electric, standard)

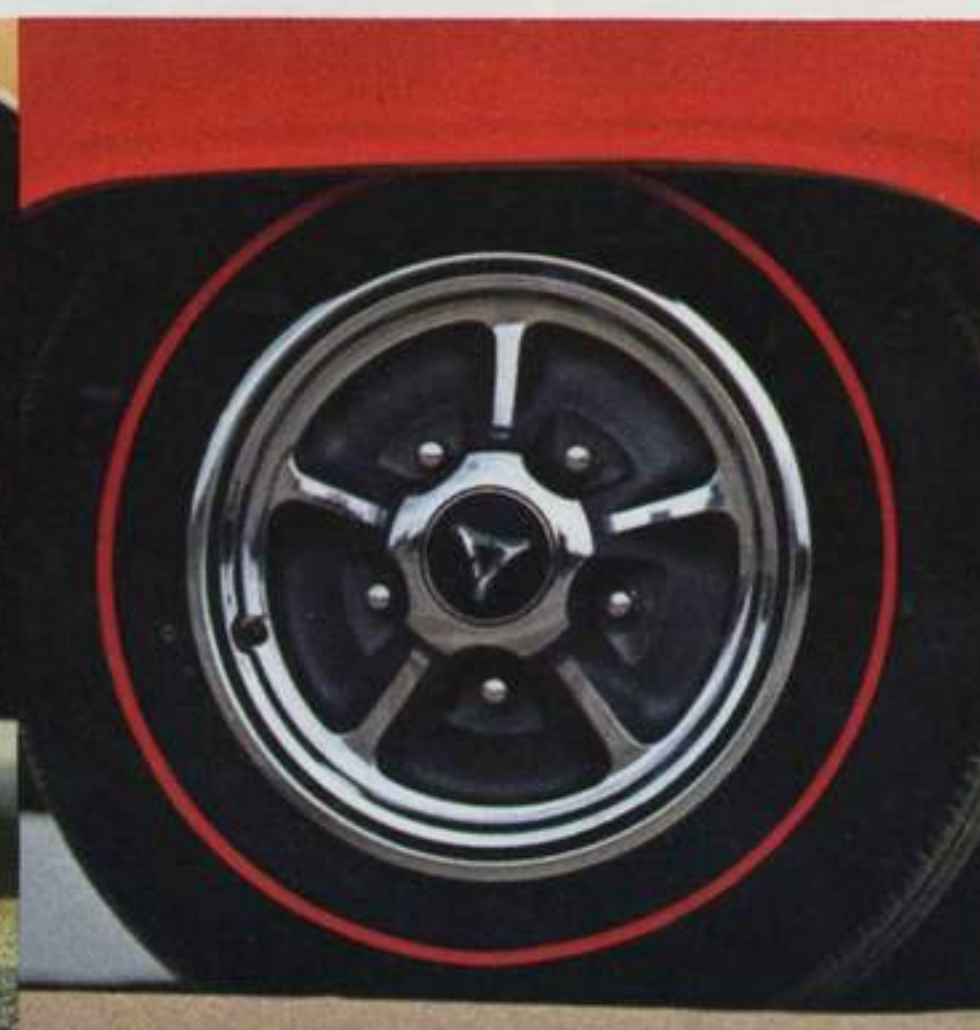
**1969 Polara/Monaco Options**

Airtemp air conditioning with or without automatic temperature control  
 Dual air conditioning with or without automatic temperature control (wagons only)  
 Automatic speed control

Brakes, front disc (require power brakes)  
 Brakes, drum, HD  
 Brougham Package (see page 10)  
 Bench seat with passenger recliner (Monaco sedan, 4-door hardtop and wagon)  
 Bucket seats (standard with Polara 500 models and Monaco 500 Package; optional in Monaco 4-door hardtop)  
 Bumper guards, front and rear  
 Center console (Polara 500 models and Monaco 500 Package only)  
 Center cushion, fold-down armrest (included with bucket seats)  
 Color-keyed vinyl head restraints, front seat, left and right  
 Cornering lights (standard on Monacos except wagon models)  
 Differential, Sure Grip  
 Door-edge protector mouldings  
 Door locks, electric  
 Electric clock with automatic regulator  
 Engines (see page 18)  
 Extra-thickness foam front seat-cushion pad (for Polara models with front bench seat only; standard in Monaco models)  
 Fender-top turn signal indicators  
 Firm Ride shock absorbers  
 Light Convenience Package (std. on Monacos)  
 Mirror, left, outside, remote-control



Chromed steel road wheel



Mag-type wheel cover



Deep-dish wheel cover



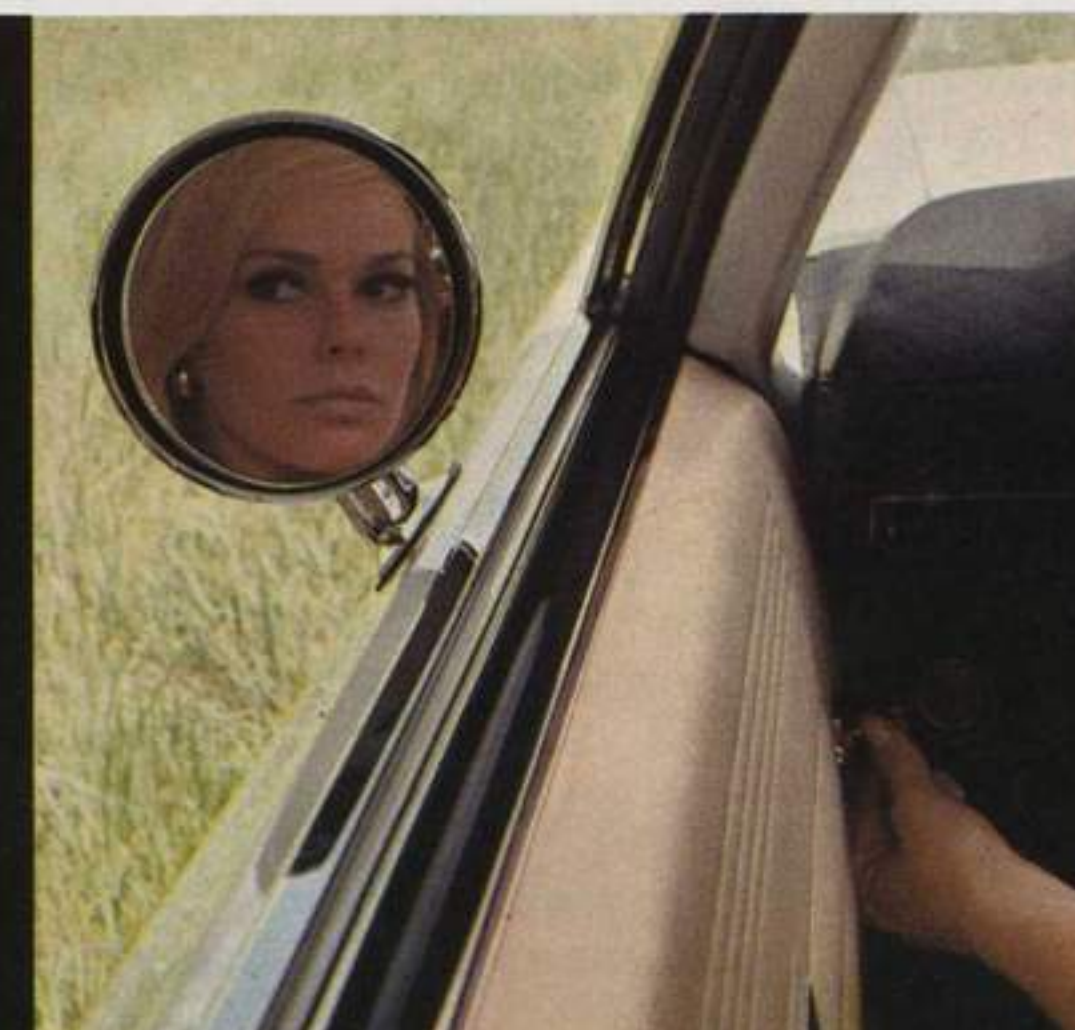
Vinyl roof (four color choices)



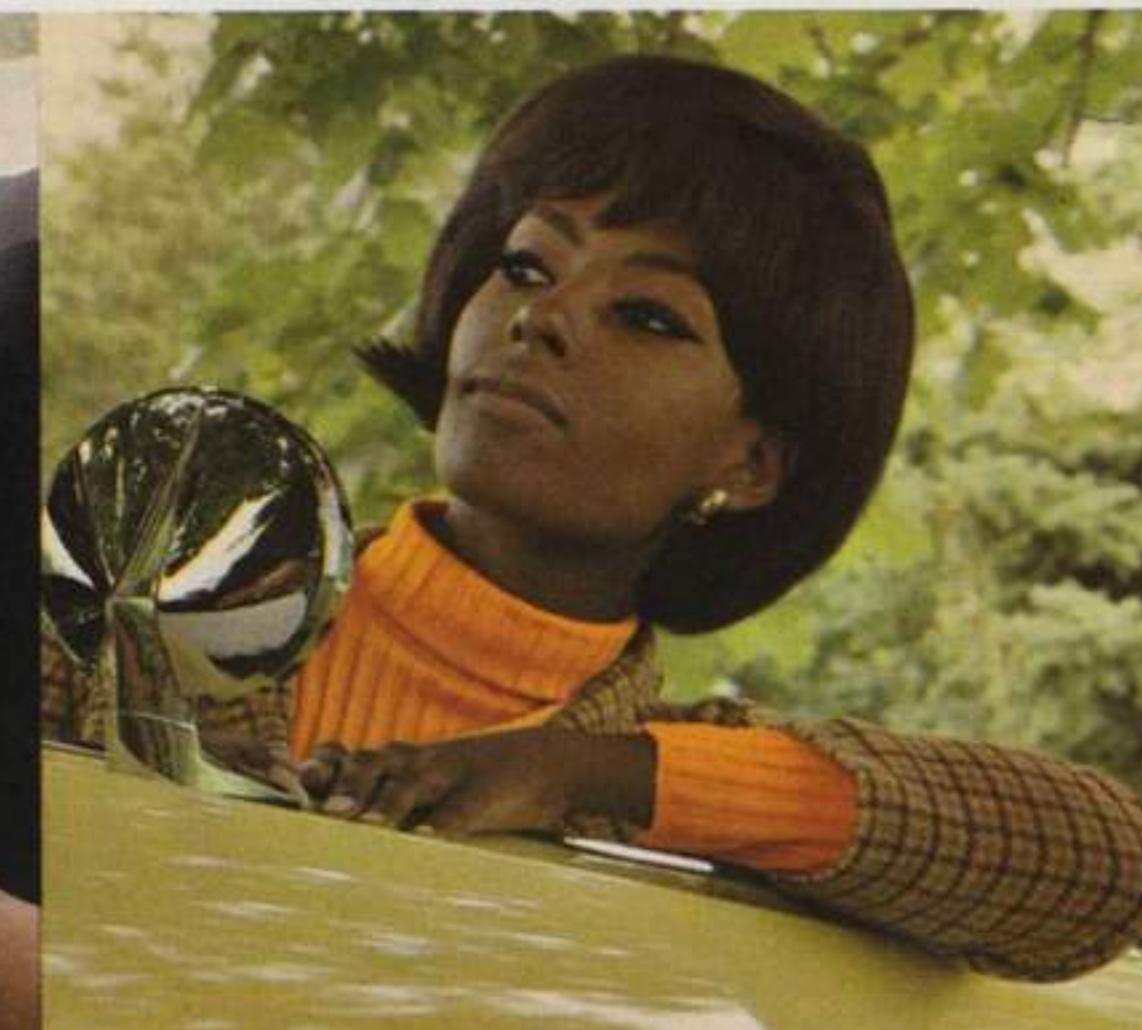
Charger SE, features many new touches



Super-Lite, new, controlled-beam driving light



Remote-control outside, left, mirror . . .



looks especially great on convertibles.





Fender-mounted turn signal indicator    Power windows (except Dart)    Electric door locks (Polara, Monaco)    Eight-track stereo, plus radio    Music Master AM radio    Polara wagon, 3-seat model

**Polara/Monaco Options**

- Mirror, right, outside (non-remote-control)
- Monaco 500 Package (see page 10)
- Power brakes, power steering
- Power seat (6-way positioning)
- Power windows
- Power trunk release
- Radio options: Music Master AM radio; Astrophonic AM deluxe radio; AM-FM radio, with FM multiplex; AM radio with 8-track stereo-tape player and 3 instrument-panel-mounted speakers for "orchestra shell" fidelity
- Rear seat speaker—single rear speaker with Music Master or Astrophonic AM radio; dual rear speakers with stereo (except all wagon models and Polara convertible)
- Rear shoulder belts, left and right (hardtops, sedans and wagons)
- Rear window defogger (hardtops, sedans)
- Sports-type steering wheel
- Station wagon items: lockable luggage compartment (standard in Monaco models); tailgate window washer and wiper; roof luggage rack (adjustable)
- Super-Lite—auxiliary driving light—Dodge exclusive feature
- Suspension, Rallye: HD torsion bars, HD rear springs, HD link-type sway bar
- Tinted windshield
- Tinted windshield and windows
- Trailer-Towing Package (see page 19)
- Two-tone exterior paint (all models except convertibles and Monaco wagons)
- Vinyl bench seats (Polara hardtops, sedan)
- Vinyl roof covering, in choice of black, white affair, green antique, or tan (Polara hardtops and sedan; all Monacos except wagons)
- Wheel covers, deluxe (standard on all Monacos and Polara 500)
- Wheel covers, deep-dish
- Cast aluminum road wheels
- White sidewall tires, low profile 8.55x15 (all except wagons)

White sidewall tires, low profile 9.15x15 (wagons only)  
 White sidewall tires, fiber-glass-belted, wide-tread, G70x15 (all except wagons)  
 White sidewall tires, fiber-glass-belted, G78x15 (all except wagons)  
 White sidewall tires, fiber-glass-belted, H78x15 (all except wagons)  
 White sidewall tires, fiber-glass-belted, J78x15 (wagons only)  
 Windshield wiper, 3-speed electric (2-speed electric, standard)

**Dart Engines:**  
 The 170-cu.-in. Six is standard in Dart 6-cylinder models—the 225-cu.-in. Six is optional. The 273-cu.-in. 2-bbl. V8 is standard in Dart 8-cylinder models—the 318-cu.-in. 2-bbl. V8 is optional.

In addition, for Dart GTSport and Swinger 340 models only, a new high-compression, high-performance 340-cu.-in. 4-bbl. V8 is standard—a special 383-cu.-in. 4-bbl. V8 is optional on GTS. (The 273 V8 and 318 V8 are not available on these models.)

**Dart Transmissions:**  
 (1) The three-speed manual, with column-mounted shift lever. It is standard with the 170 Six, 225 Six, and 273 V8 only, and not available on GTS or Swinger 340 models.

(2) The four-speed manual has a Hurst floor-mounted shift, is standard on Swinger 340, optional on all other Dart models with V8 engines, and is not available on six-cylinder models.

(3) The three-speed TorqueFlite automatic has a column-mounted shift (console-mounted in Dart models equipped with optional center console). A "partial kickdown" (2nd gear) feature gives improved acceleration and economy for six-cylinder Dart models. TorqueFlite automatic is standard on GTS models, optional on other Dart models—Sixes and V8s.

**Coronet Engines:**  
 The 225-cu.-in. Six is standard in Coronet 6-cylinder models. This engine

is not available in 3-seat wagons, any Coronet 500 or R/T models. The 318-cu.-in. 2-bbl. V8 is standard in Coronet Deluxe, 440, and 500 models, not available on R/T or Super Bee.

A special 383-cu.-in. Magnum V8 is standard in the Super Bee. This engine includes the 440 Magnum V8 heads, valve gear, hot cam, and manifolds.

The 440-cu.-in. 4-bbl. Magnum V8 is standard in Coronet R/T models, not available in other Coronet models. The Dodge 426-cu.-in. (two 4-bbl.) Hemi V8 is optional in Super Bee and R/T models.

Also optional are a 383 2-bbl. V8 and a 383 4-bbl. V8. See your Dealer for availabilities.

**Coronet Transmissions:**  
 (1) The 3-speed manual, with column-mounted shift. It is standard with the 225 Six and 318 V8 only, not available on Coronets powered by other V8 engines.

(2) The 4-speed manual has a floor-mounted shift (or console-mounted in Coronet models equipped with optional center console). The 4-speed, fully synchronized manual is standard on Super Bee, optional with the 383 4-bbl. V8, optional with the 440 Magnum V8 and 426 Hemi V8 only.

(3) The 3-speed TorqueFlite automatic has a column-mounted selector (console-mounted in Coronet models equipped with optional center console). TorqueFlite automatic is standard on R/T, optional on all other Coronet models.

**Charger Engines:**  
 318-cu.-in. V8 comes standard with the Charger. A 225-cu.-in. Six is also available. The 383-cu.-in. 2-bbl. V8, which uses regular fuel, and the 383-cu.-in. 4-bbl. V8 are optional on Charger, not available on Charger R/T. Charger R/T comes standard with the 440-cu.-in. Magnum V8. The 426-cu.-in. (two 4-bbl.) Hemi V8 is optional on Charger R/T only.

**Charger Transmissions:**

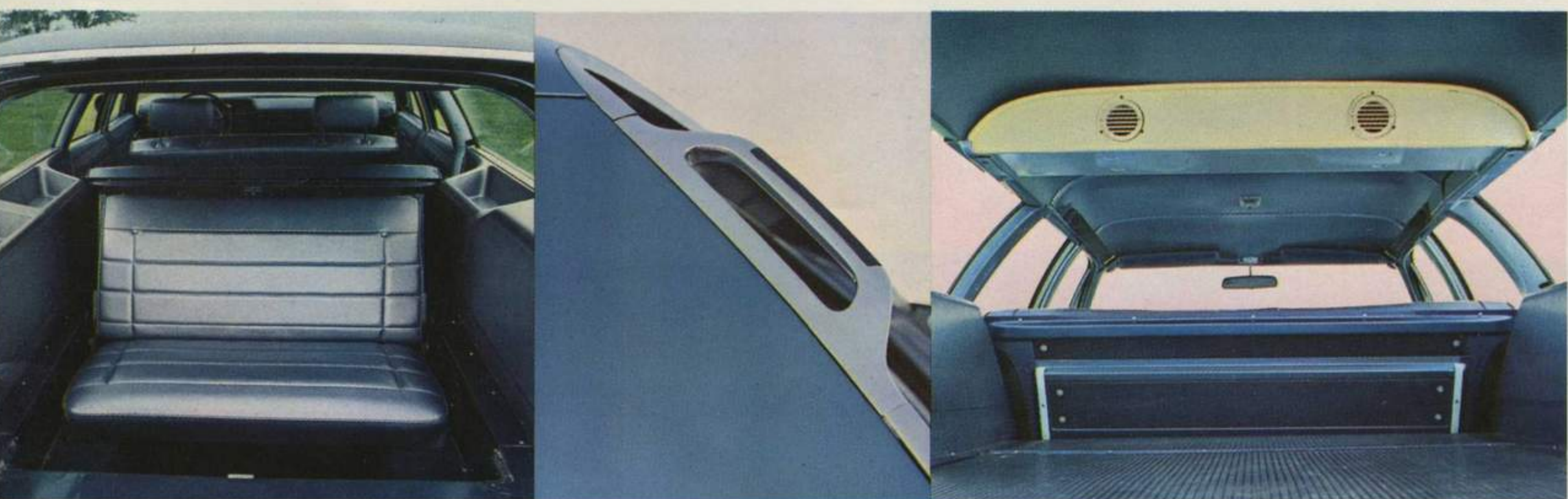
Three-speed manual (column-mounted shift), standard with 318 V8 or 225 Six only. TorqueFlite three-speed automatic (selector, column-mounted), standard on Charger R/T with 440 Magnum V8—optional with 318 V8, 383 V8s and 225 Six. Console-mounted selector with optional center console. 4-on-the-floor (all forward speeds sync.) with Hurst shifter optional with 383 4-bbl. V8, 440 Magnum V8 and 426 Hemi V8.

**Charger Suspension:**  
 Standard on Charger is the HD Suspension Package which includes HD rear springs and sway bar. HD shocks, not included in the Package, are optional on Charger.

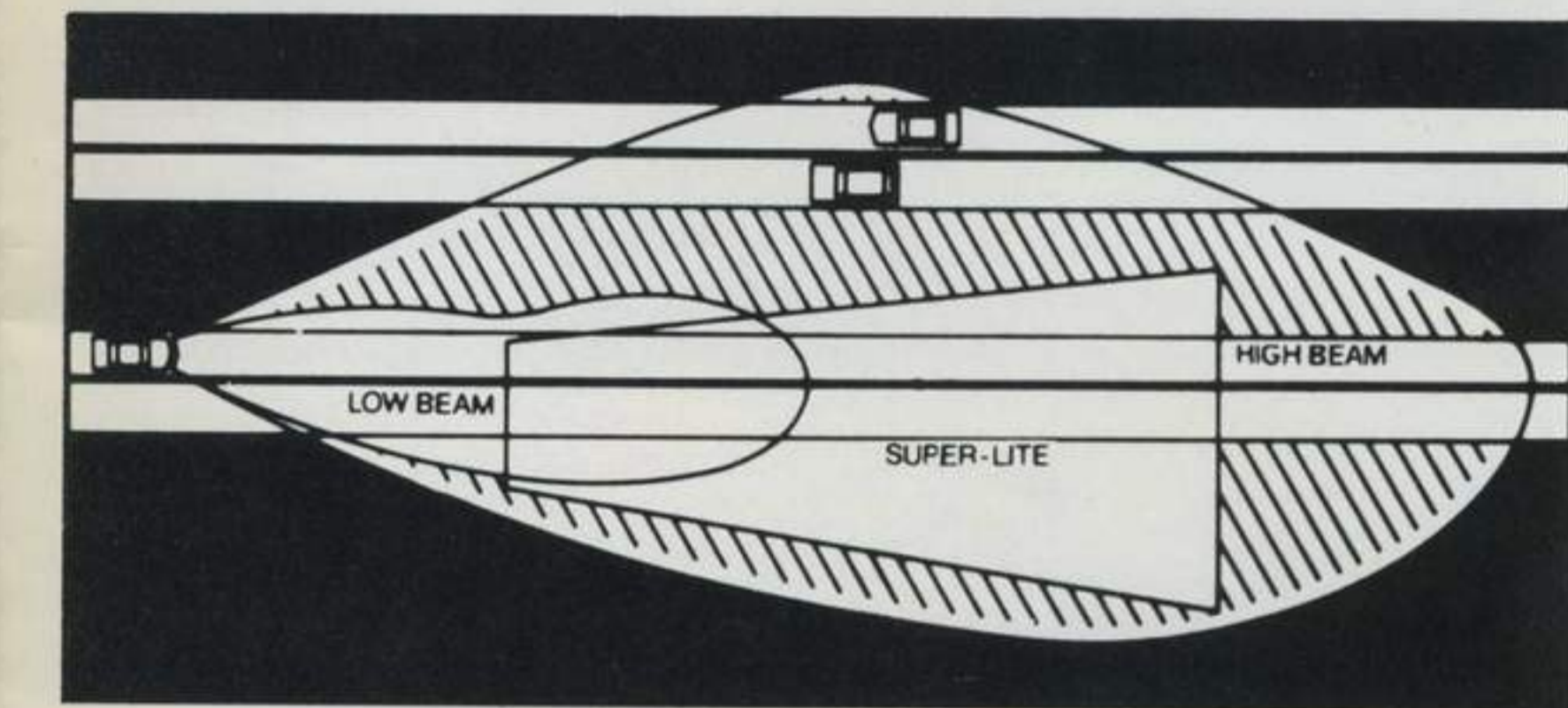
**Polara and Monaco Engines:**  
 The standard engine for all Polara and Polara 500 models is the 318-cu.-in. V8. The 383-cu.-in. 2-bbl. (regular fuel), the 383-cu.-in. 4-bbl., and the 440-cu.-in. Magnum V8 are optional on most Polara models. Polara station wagons offer a special 440-cu.-in. 4-bbl. dual exhaust V8 optional instead of the 440 Magnum V8.

The standard engine for all Monaco models is the 383-cu.-in. 2-bbl. (regular fuel). The 383-cu.-in. 4-bbl. V8 and 440-cu.-in. Magnum V8 are optional for most Monaco models. Monaco station wagons offer the special 440-cu.-in. 4-bbl. V8.

**Polara and Monaco Transmissions:**  
 The 3-speed manual, with column-mounted shift, is standard on all Polara, Polara 500, and Monaco models when powered either by 318 V8 or 383 2-bbl. V8. 3-speed manual is not available with other V8 engines. The 3-speed TorqueFlite automatic transmission has a column-mounted selector (console-mounted in Polara 500 models and Monaco 2-door hardtops with optional Monaco 500 Package equipped with center console). TorqueFlite automatic is optional on all models.



Polara wagon, 3-seat model    Station wagon assist handle    Dual air conditioning (Polara, Monaco wagons)



**INTRODUCING SUPER-LITE. FOR TRIPS, THE LIGHT FANTASTIC. (OPTIONAL—POLARA/MONACO ONLY)**

How many times have you driven on turnpikes at night and had to blink your bright beam on and off to keep from blinding oncoming drivers? We did something about that. We developed Dodge Super-Lite—a special high-intensity quartz-iodide lamp, coupled to precision optics and a unique light-pattern mask. Super-Lite projects a concentrated light beam almost as far ahead as your "brights"—but it doesn't get in the eyes of the oncoming drivers or in the mirror of the car ahead of you. (You can still use the brights, if you want. But now we give you a choice. Your left foot will appreciate it.) Please note: Our little diagram tells part of the Super-Lite story. Your Dealer can give you a demonstration.

**Dodge Suspensions:**

The standard Dodge suspension features torsion bars and ball joints plus a sway bar in front, asymmetrical leaf springs in the rear, Oriflow shocks at each wheel—all suspension components are rubber-isolated. HD Suspension Package (optional) includes HD torsion bars, HD rear springs, HD sway bar. In addition, HD shocks are available as a separate option. (For Scat Pack models, see page 13.)

**1969 Dodge Colors**

- 1. Silver Metallic (a)
- 2. Light Blue Metallic
- 3. Bright Blue Metallic (b)
- 4. Medium Blue Metallic
- 5. Dark Blue Metallic (c)
- 6. Cordovan Metallic (c)
- 7. Light Green Metallic
- 8. Medium Green Metallic
- 9. Dark Green Metallic
- 10. Beige (d)
- 11. Light Turquoise Metallic (c)
- 12. Bright Turquoise Metallic (b)
- 13. Bright Red (e)
- 14. Red
- 15. Light Bronze Metallic
- 16. Copper Metallic (b)
- 17. Dark Bronze Metallic (a)
- 18. White
- 19. Black
- 20. Yellow (b)
- 21. Cream
- 22. Gold Metallic

(a) N.A. on Dart. (b) N.A. on Polara/Monaco. (c) Polara/Monaco only. (d) N.A. on Charger. (e) Charger and Swinger 340 only.

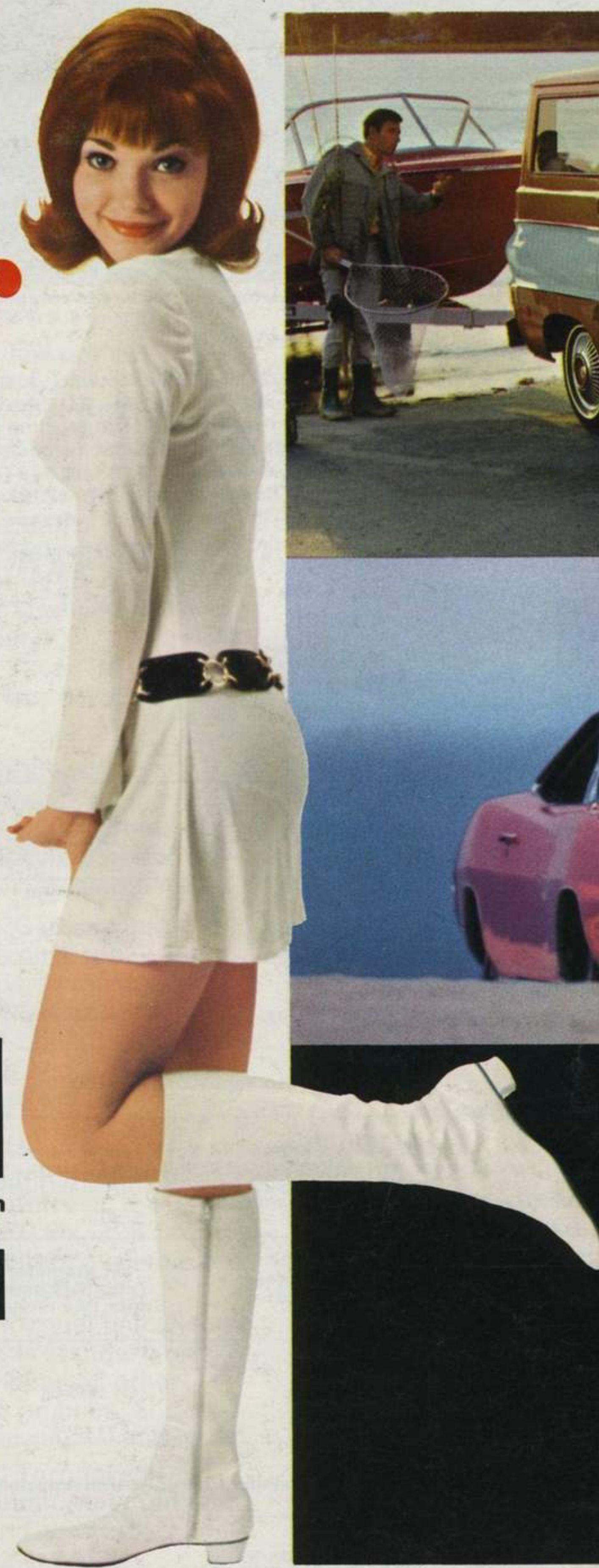
| TRAILER-TOWING PACKAGE                                  | DART  | CORONET/CHARGER   | POLARA/MONACO                               |
|---|---|---|---|
| Towing Pkg. required, if gross trailer weight exceeds   | 1,500 lbs.  | 2,000 lbs.  | 2,500 lbs.                                  |
| Maximum gross trailer weight with Towing Pkg. installed | 2,000 lbs.  | 4,000 lbs.  | 5,500 lbs.                                  |
| Loaded trailer tongue-weight*                           | 150 lbs.  | 200 lbs.  | 250 lbs.                                    |
| Basic Towing Package                                    | ■ High-capacity radiator ■ HD suspension—front, rear ■ 7-blade cooling fan ■ Sway bar ■ Fan shroud, hood seal ■ HD turn signal flasher ■ HD rear axle—3.23 ratio ■ HD stoplight switch ■ Larger transmission/oil cooler (Charger/Coronet only) ■ High-control shocks (Polara and Monaco models) |   |   |
| HD brakes   | 10" diameter (std., V8)   | 11" diameter (std., R/T and Super Bee models)                 | 11" diameter                                |
| Wide-rim wheels   | 5.5J  | 5.5JK   | 6.0JJ (wagons 6.5JJ)                        |
| Extra-cost equipment also required for trailer towing   | TorqueFlite automatic transmission (all models)   |   |   |
| Optional tires  | D70 x 14, wide-tread (E70 x 14 with 340 V8)   | 7.75 x 14 (wagons) 8.55 x 14 (w/440 V8)                       | 8.55 x 15 (wagons 9.15 x 15)                |
| Recommended equipment†                                  | ■ Power steering ■ Air conditioning (V8 required in Dart) ■ Power brakes ■ High-output alternator (46-amp) ■ Front disc brakes ■ HD battery (70-amp-hr) ■ Sure Grip rear axle ■ Larger V8 (273, 318 or 340 V8 in Dart) ■ Automatic speed control (all, except Dart)                             |   |   |
| Engine restrictions                                     | available with 225 Six, 273 V8, 318 V8 or 340 V8 only   | available with 318 V8, 383 V8s, 440 V8; N.A. Hemi V8, 225 Six | available with all V8 engines except 318 V8 |

\*Requires load-equalizing frame-type hitch, not supplied by Dodge. †Optional, at extra cost.





Join the fun. Catch  
**DODGE fever**



customer  
care

**Dodge**



**CHRYSLER**  
MOTORS CORPORATION

All product illustrations and specifications are based on authorized information. Although all descriptions are believed correct at publication approval, accuracy cannot be guaranteed. Some of the equipment shown on product illustrations is optional, at extra cost. Dodge Division reserves the right to make changes from time to time, without notice or obligation, in prices, specifications, colors and materials, and to change or discontinue models.