

1966 FORD TRUCKS

ECONOLINE

VAN/SUPERVAN/PICKUP



REASONS WHY FORD ECONOLINES ARE THE MOST

LOW INITIAL PRICE . . . Ford Econolines not only start with a low initial price but also continue with full-time economy that remains doggedly persistent day after day, year after year.

Ford Econolines are priced competitively with similarly styled trucks of other makes. Big difference is that the Ford Econoline price includes five years of design improvements to give you the best value for your transportation dollar.

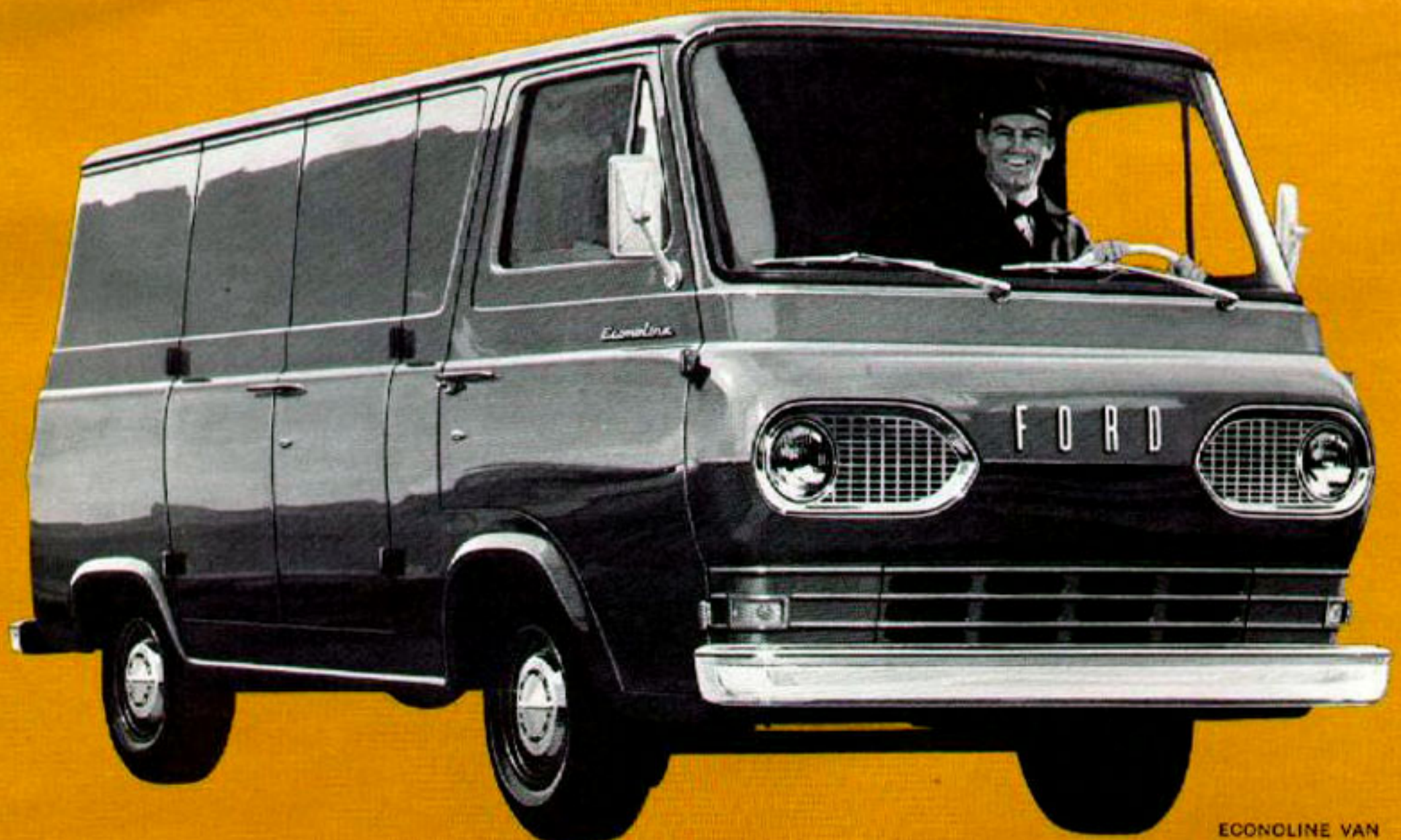
LOW OPERATING COSTS . . . Econoline means exactly what the name implies—Economy! Econolines operate at minimum cost for the

following reasons: the single-unit, body-frame construction provides maximum strength with minimum weight; engine oil change and minor chassis lubrication intervals are scheduled only every 6,000 miles or 6 months, whichever occurs first; self-adjusting brakes help minimize maintenance and downtime; alternator keeps the battery charged even at engine idle and increases battery life; a heavy-duty clutch provides long-life service.

EASY TO LOAD . . . Economy also means saving time and effort on the job when loading or unloading. With Ford's Econoline Vans, you

have no need to load on a "first on, last off" basis. With up to eight doors available, every part of the load is within easy reach.

EASY TO HANDLE . . . Driver visibility and handling ease are outstanding with Econolines. The cab-forward design and big, one-piece 9.4-sq. ft. windshield provide extra close-to-the-road visibility. The short 90-inch wheelbase and short 34.7-ft. turning diameter give Econolines the ability to get through traffic and congested shipping areas with the greatest of ease. What's more, you save time on the job, save on driver wear-and-tear, too!



ECONOLINE VAN

POPULAR DELIVERY TRUCKS...

BIG CARGO SPACE AND PAYLOADS . . .

Econoline Vans and SuperVans are the most versatile closed-body delivery trucks in the industry. The standard Econoline Van hauls up to 900 lb.; SuperVan hauls up to 875 lb., and the Econoline Pickup hauls up to 1075 lb. of payload. When Econolines are equipped with the optional GVW package, Econoline Vans and Pickups can haul over 2,000 lb. (one ton) of payload.

Cargo space for the Econoline Van is 204 cu. ft., SuperVan—251 cu. ft., Econoline Pickup—73 cu. ft.

Your Ford Dealer has additional information on many special interior options.

TOTAL PERFORMANCE SIXES . . .

Whether you choose the standard 170-cu. in. Six or the more powerful, optional 240-cu. in. Six, you can expect outstanding performance. Both Sixes feature individually ported intake manifolds for freer engine breathing. And the big 240-cu. in. Six develops 150 horsepower to give Econolines superb acceleration and hill-climbing capabilities.

QUALITY-BUILT TO LAST LONGER, TOO . . . 1966 Econolines are the most durable compact delivery trucks in the industry! During the past five years, Ford Econolines have been refined with approximately fifty-seven chassis and

body improvements.

Extensive galvanized protection and underbody rustproofing in critical areas keep Econolines looking young and efficient year after year.

The Econoline's proven design combined with Ford's traditional high quality construction make this compact delivery truck one of the best light-duty truck values available today! Need more proof? Talk to an Econoline owner and let him do the bragging!

OWNER-PROVED FOR FIVE YEARS AS THE ALL-ROUND ECONOMY DELIVERY CHAMP FOR 1000-AND-ONE USES!

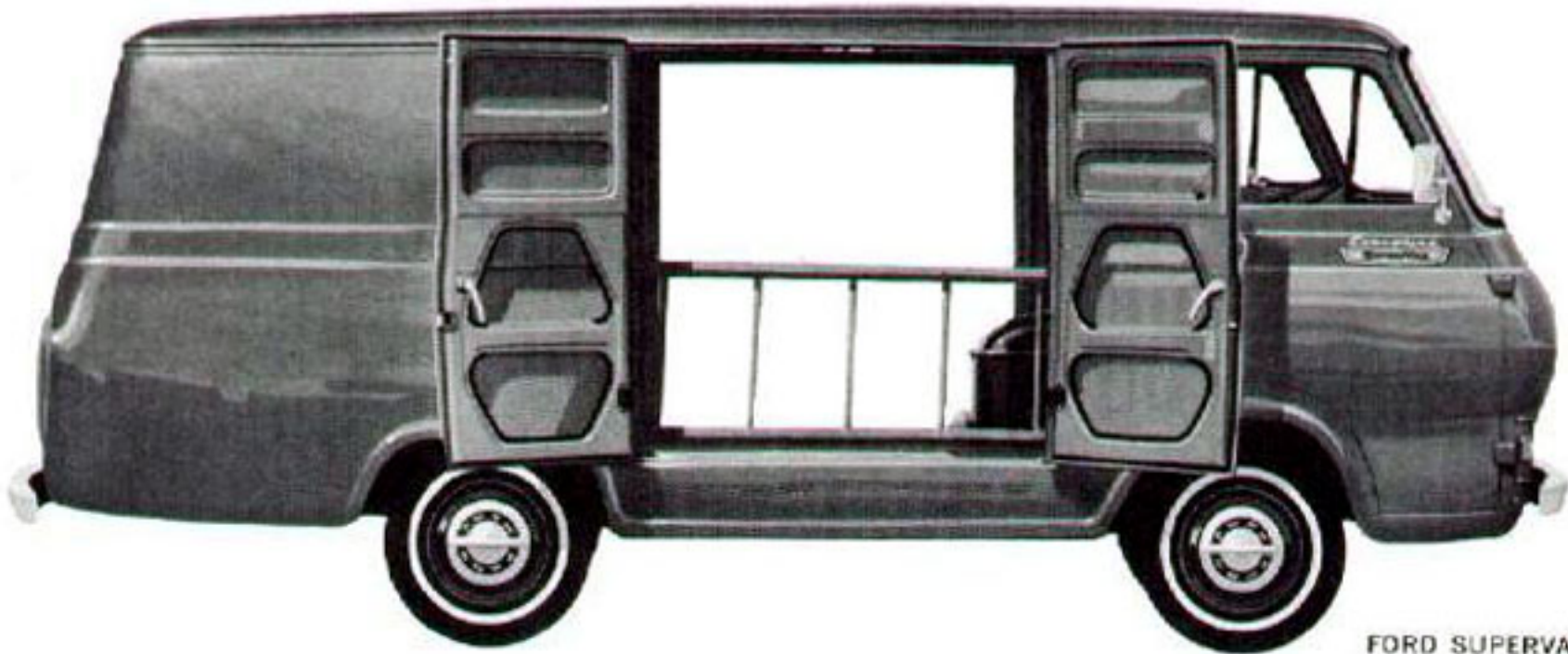


ECONOLINE PICKUP

PICK THE ECONOLINE TO MEET YOUR NEEDS!



FORD ECONOLINE VAN



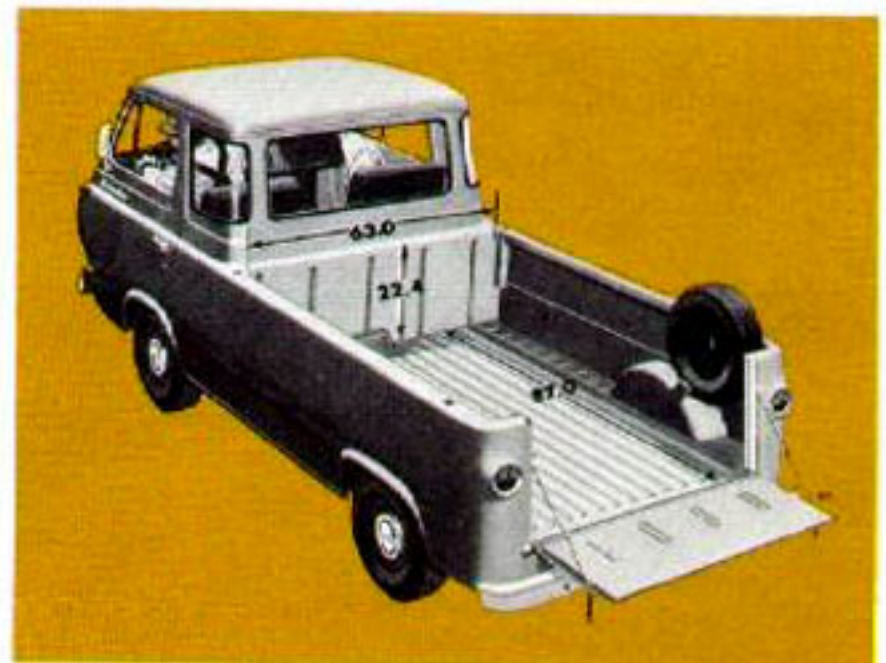
FORD SUPERVAN

TWO SIZES OF VANS . . . You can choose from two sizes of vans . . . the regular size Econoline Van or the king-size SuperVan. Major difference between the two is that with SuperVan you get an 18-inch longer flat floor, 47 cubic feet (23%) more loadspace.

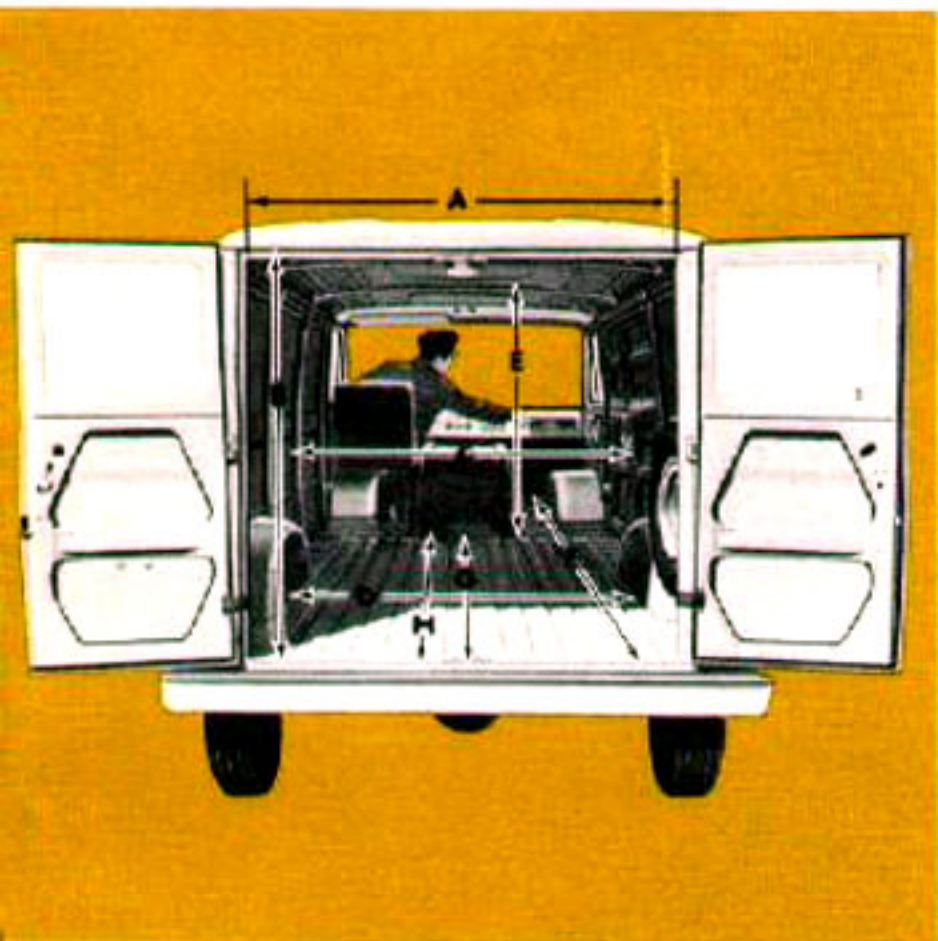
What's more, SuperVan lets you haul up to 8½-foot-long objects on an all-clear, flat floor; up to 14-foot-long narrow items when placed along the right side of the engine housing, and you can shut both rear doors! See chart on page 5 for cargo dimensions on both vans!

OR AN ECONOLINE PICKUP . . . Need an economy pickup with exceptional maneuverability and outstanding close-to-the-road visibility? Then choose a Ford Econoline Pickup! Whether powered by an economy 170-cu. in. Six or a 240-cu. in. Big Six and teamed up with a 3-speed manual or automatic transmission, you can expect fine performance at minimum cost.

The pickup hauls up to 2,075 lb. of payload when equipped with the optional GVW package. An all-steel, ribbed-floor cargo box measures 7 ft. long, over 5 ft. wide and is almost 2 ft. deep.



BARN-SIZE DOOR OPENINGS . . . You can load 4-foot-wide cargo through big 4-ft.-wide and almost 4-ft.-high door openings from the rear or from either side. Left-side double doors are optional, right-side double doors are standard on Van and SuperVan. Wide door openings provide easy access to your load with minimum bending or squeezing. You save time at every delivery stop. Save the driver, too!



BODY DIMENSIONS (Inches)	ECONOLINE VAN	ECONOLINE SUPERVAN
(A) Door opening width	49.2	49.2
(B) Door opening height	46.8*	46.8*
(C) Max. inside width	67.2	67.2
(D) Width between wheelhousings	48.2	48.2
(E) Floor to roof height	53.9	53.9
(F) Max. inside length	158.5	176.5
(G) Floor length—rear to back of transmission	83.9	101.9
(H) Floor length—rear to back of engine cover	88.9	106.9

*Side doors 47.7 in.

A WIDE CHOICE OF BODY OPTIONS IS AVAILABLE FOR BOTH ECONOLINE VAN AND SUPERVAN



DISPLAY VAN. The Display Van has fixed windows in the right side for good lighting of bins, shelves, etc., custom-built against the left wall. Fixed or vent-type right side and rear cargo door windows are available.



WINDOW VAN option provides fixed windows all around for better vision and display of attractive loads such as floral pieces. Vent-type windows in the rear and right side doors are optional.



PANEL VAN. The Panel Van has rear cargo doors only. If your operation does not require the convenience of side doors, but does require operating economy and low initial cost, the Panel Van is your best buy.



OPTIONAL GVW PACKAGE. Lets you haul about 2,000 lb. Includes higher capacity springs, larger rear brakes, front stabilizer bar, heavy-duty underbody structure, HD shock absorbers and larger tires.



CAMPER. Convert to a Camper with an Econoline Camper Kit. Seats and sleeps six comfortably. To provide extra sleeping accommodations and increase headroom, you can add an elevating top with bunk.



LEFT-SIDE CARGO DOORS. Optional left-side cargo doors are particularly handy when making deliveries in highly congested areas and where unloading from either side may be necessary.

FORD ECONOLINES... PROVEN BY FIVE YEARS' USE

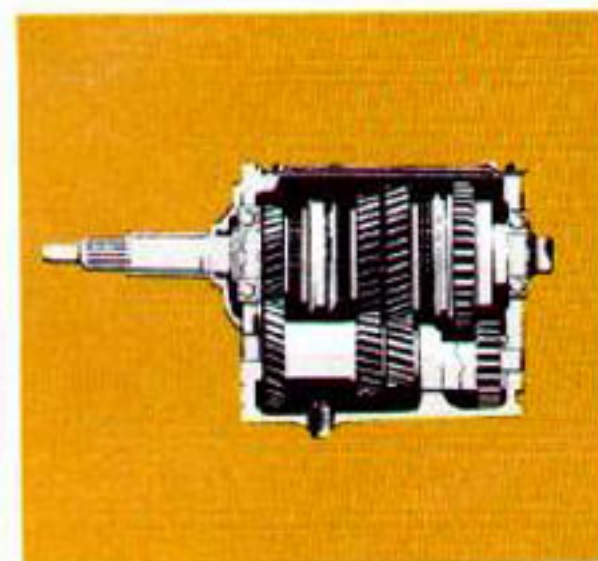
... IN DURABILITY

1966 Ford Econolines have proven durability! During the past five years, Econolines have been Ford-refined for long-term durability. From top to bottom, front to rear, inside and out, running improvements over the years include such items as heavy-duty underbody structure, full-length reinforcing grooves in roof sheetmetal, stronger front and rear contoured bumpers, heavy-duty clutch, more powerful engines, stronger axles and suspensions, and many others.



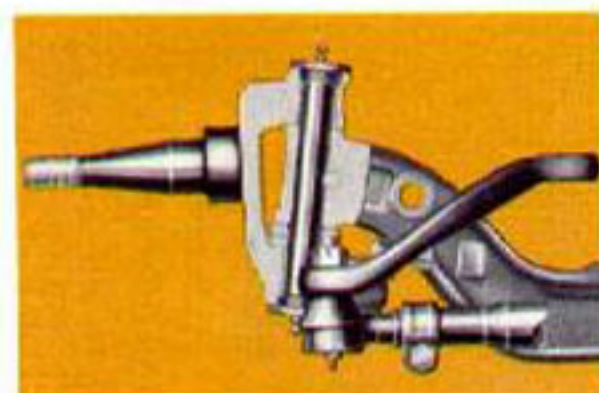
GALVANIZED PROTECTION

Major structural components of the underbody are galvanized for optimum resistance to corrosion. Galvanizing is also used in the wheelhouse area and at the front steps. Zinc-rich primer is applied to all other critical areas.



RUGGED TRANSMISSIONS

Ford's 3-speed fully synchronized manual transmission lets you downshift into low while moving without gear clash. A 3-speed Cruise-O-Matic transmission is available for extra convenience especially in heavy traffic and in typical stop-go delivery work.



BIG-TRUCK DESIGN FRONT AXLE AND SUSPENSION

A forged I-beam front axle, long leaf springs and double-acting shock absorbers give 1966 Econolines plenty of durability and stability. This helps keep the front end in alignment and provides easy steering and good riding for both load and driver.

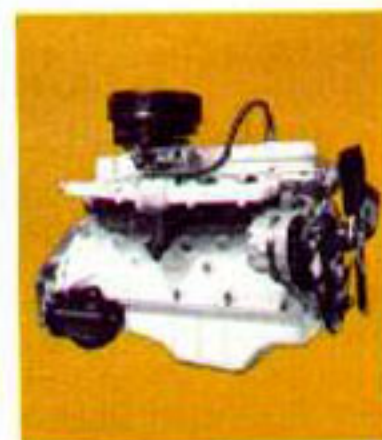
DURABLE CLUTCH

An 8½-inch clutch with 68 sq. in. of extra-durable lining material is standard on Econolines powered by the 170-cu. in. Six. HD 10-inch clutch having long-term durability is standard with the 240-cu. in. Six.



... IN LOW OPERATING COSTS . . .

Ford Econoline's overwhelming success is due to its design . . . an all-welded, single-unit body-frame construction that provides maximum strength with minimum weight. The Econoline's high-strength body, supplemented by well-engineered and quality-built engines, axles, brakes and suspensions, result in minimum operating costs mile after mile.



CHOICE OF TWO SIXES

ENGINE SPECIFICATIONS	170 SIX (STD.)	240 SIX (OPT.)
Max. Gross HP @ rpm	105 @ 4400	150 @ 4000
Max. Net HP @ rpm	89 @ 3800	129 @ 4000
Max. Gross Torque (lbs-ft @ rpm)	158 @ 2400	234 @ 2200
Max. Net Torque (lbs-ft @ rpm)	146 @ 2400	218 @ 2000
Displacement (cu. in.)	170	240
Bore and Stroke (in.)	3.50 x 2.94	4.00 x 3.18
Compression Ratio (to 1)	9.1	9.2



FORD BATTERY . . . A one-piece, premolded battery cover is more leak-resistant than old-style batteries. This feature also provides more volume of electrolyte above the plates which protects the battery and increases battery life.

SELF-ADJUSTING BRAKES

Self-adjusting brakes are standard on Econolines for greater safety and economy. Brakes adjust automatically, as necessary. Optional heavy-duty brakes are available with the 3050-lb. capacity rear axle and 14-inch wheels.



ALTERNATOR . . . A 38-ampere, 570-watt alternator is standard on all Econolines. The alternator prolongs battery life and keeps the battery charged during stop-go idle delivery service. Higher capacity 45- or 55-ampere alternators are also available.

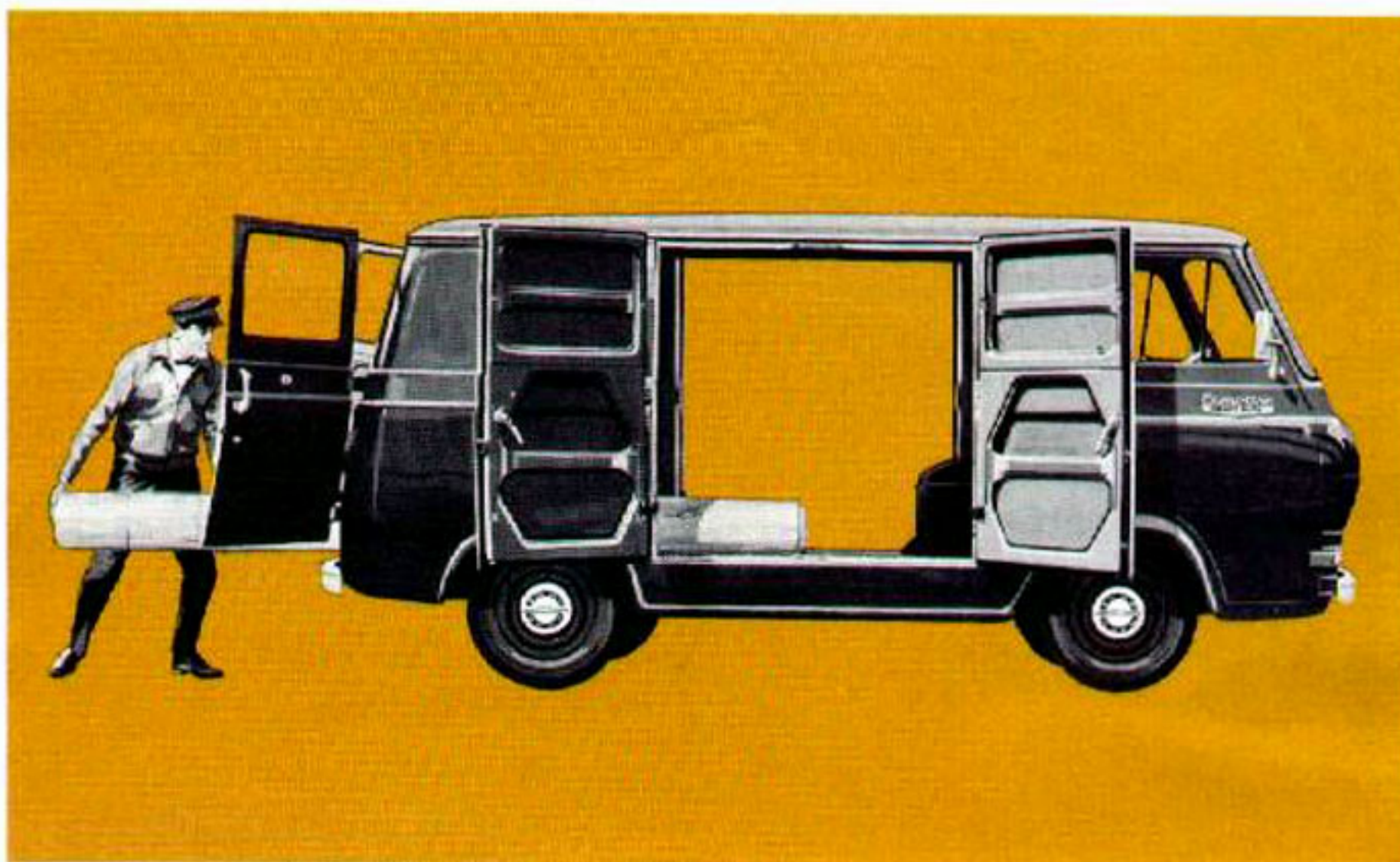


... IN LOADING CONVENIENCE ...

Easy to load—Ford's Econoline Van and SuperVan load or unload with ease through 4-foot-wide, nearly 4-foot-high door openings from the side or rear. The low loading height of only 22.3 inches from ground to floor when the truck is empty speeds delivery chores ... cuts down driver fatigue.

Big Loadspace—The Econoline Van can haul 12-foot carpets, pipes or ladders along the right side of the engine housing, and SuperVan can haul similar objects up to 14 foot long ... with rear doors closed!

Pickup Loading Ease—The Econoline Pickup with 22.4-inch-deep side panels and a low 22-inch ground-to-floor height (when empty) makes over-the-side loading or unloading quick and easy.



AUXILIARY RETRACTING STEP—A wide, retracting, steel-ribbed step is available on Econoline Vans and SuperVans to ease right-side van entry and exit. The sturdy step retracts out of the way under the floor of the van when the doors are closed. This retractable step option is especially handy with vans equipped with a Camper Kit, or for drivers making many delivery stops.



BATTERY ACCESSIBILITY—An optional driver's folding seat provides easy access to the battery when battery servicing is necessary. An optional Flip-Swing passenger's seat swings against the side of the van to give the driver unobstructed access to the rear cargo area.



REAR DOOR WINDOW VENTILATION ... Optional rear cargo door vent windows are available to let fresh air flow through the cargo area. The inner edge of each window frame is hinged to allow the outer edge of each window to be opened up to three inches. Open vent windows prevent the buildup of hot, stale air and help remove odors from volatile-type loads.

24,000-MILE OR 24-MONTH WARRANTY—Ford Motor Company warrants to truck owners as follows: That for 24,000 miles or 24 months, whichever occurs first, free replacement, including related labor, will be made by Ford Dealers of any part with a defect in workmanship or material. Tires are not covered by the warranty; appropriate adjustments will be made by tire companies. Owners will remain responsible for normal maintenance services, routine replacement of parts such as filters, spark plugs, ignition points, wiper blades, brake or clutch linings, and for normal deterioration of soft trim and appearance items. Warranty referred to herein is applicable to products sold in U.S.A. and in certain neighboring areas.

1966 ECONOLINES ARE COMFORT-CONDITIONED WITH PLENTY OF CONVENIENCES!

Get behind the wheel of an Econoline just once and you'll find driving is more fun than chore! Entry and exit are quick and easy because the doors open wide. An almost vertical steering column provides ample clearance for sliding behind the wheel. Seat belts, padded dash, windshield washers, LH outside rearview mirror (plus RH on Vans), ICC emergency light flasher unit and heater-defroster are standard in 1966.

The foam-padded individual-type driver's seat (passenger seat also on pickup) is unusually comfortable. Standard seat trim is attractive with durable Ford vinyl color-keyed to exterior paint. Custom seats are of woven-plastic seat trim in a choice of four basic colors that are keyed to exterior paint.

Notice that visibility is superb through a big, one-piece windshield. (Comes in tinted glass if you like.) And no hood out front to interfere with your vision.

Conveniences aplenty are standard. Some of them are dual-electric windshield wipers that leave no center blind spot; dome light in cabs and Vans' cargo compartment; an easy-to-read instrument cluster; an arm rest on driver's door (vans); a handy package tray built-in on the steering column; a lockable glove compartment; matched door locks; side vent window latches with push-button locks; a driver's sun visor and a coat hook. As you can see, Econolines think of everything!



CUSTOM CAB

STANDARD FEATURES: Vinyl upholstery color-keyed to exterior paint • Left-hand fresh air inlet • Dual electric windshield wipers • Non-glare wiper arms • Windshield washers • Left and right outside rearview mirrors (RH optional on pickup) • Left sun visor • Painted front and rear bumpers (rear optional on pickup) and hub caps • Dome lights • Ash tray • Mechanical jack • Spare wheel, tire, and carrier • Single electric horn • Turn signals (in front parking lights and rear taillights) • ICC emergency light flasher unit • Matched locks for all doors • Push-button lock for side vent-window latches • Plastic foam padding in driver's seat cushion and seat back • Padded dash • Arm rest for driver (vans) • Headlining in driver area • Padded glove compartment door with lock • Coat hook • Seat belts • Fresh air heater and defroster.

CUSTOM FEATURES: (in addition to or in place of standard features) Woven plastic upholstery color-keyed to exterior paint • Right-hand sun visor • Right-

hand arm rest (vans) • L & R arm rests (pickup) • Cigar-cigarette lighter • Dual horns • Bright-metal hub caps • Chrome horn ring • Insulation on cowl wall • Headlining in Van cargo area • Windows in Van rear doors • Foam padding in stationary passenger seat (optional on vans).

OTHER AVAILABLE EQUIPMENT: Radio; Flip-Swing seat; ammeter and oil pressure gauge; interior or Western-type rearview mirrors; tinted windshield and tinted glass all around (pickup and window vans); two-speed electric windshield wipers; front and rear chrome bumpers; white sidewall tires; auxiliary heater; folding driver's seat; rear or side door vent windows.

STANDARD COLORS: Rangoon Red, Sahara Beige, Raven Black, Springtime Yellow, Holly Green, Caribbean Turquoise, Arcadian Blue, Marlin Blue, Wimbledon White, Chrome Yellow, Pure White. A two-tone paint effect is available with Wimbledon White combined with any other standard color except Chrome Yellow or Pure White.

CHASSIS SPECIFICATIONS

	STANDARD AND OPTIONAL CHASSIS EQUIPMENT	OPTIONAL GVW PACKAGE:
MAXIMUM GVW: (lb.)	4350*	4930
MAXIMUM PAYLOAD: (lb.)	1600	Pickup: 2075; SuperVan: 2000; Van: 2050
MAXIMUM LOADSPACE: (cu. ft.)	204 Van, 251 SuperVan, 73 Pickup	—
ALTERNATOR: Standard	38 amp., 570 watt.	—
Optional	45 or 55 amp.	Opt. 45 or 55 amp.
AXLE, FRONT: Capacity (lb.)	2150	—
AXLE, REAR: Capacity (lb.)	2300	3050††
Ratios (to 1)—Standard	3.50	4.11
Optional	4.00	3.00, 3.50, 4.57
Optional Capacity (lb.)	3050††	opt. 3050-lb. Limited-Slip
Ratios (to 1)	3.00, 3.50, 4.11, 4.57	—
BATTERY: Standard	54 plates, 45 amp-hr.	—
Optional	66 plates, 55 amp-hr.	Opt. 66 plates, 55 amp-hr
BRAKES, SERVICE: (self-adjusting) Size (in.)	Front 10 x 2.50	—
Optional	Rear 10 x 1.75	Rear 10 x 2.50
BRAKES, PARKING:	HD front & rear 10 x 2.50 (w/14" wheels & 3050-lb. axle)	Opt. HD front and rear 10 x 2.50
CLUTCH: Dia. (in.)—Frictional Area (sq. in.)	Cable actuation of rear brakes	—
ENGINE: Standard	8.5—68.1 (10—85.5 w/240 Six)	—
Optional	105-hp, 170-cu. in. Six	—
FUEL TANK: Capacity (gal.)	150-hp, 240-cu. in. Six	Opt. 150-hp, 240-cu. in. Six
Location	14	—
SHOCK ABSORBERS: Front and Rear	Under cargo floor	—
SPRINGS, FRONT: Capacity @ pad (lb.)	Double-acting, telescopic	HD double-acting, telescopic
SPRINGS, REAR: Capacity @ pad (lb.)	855 (std.), opt. 955, 1075 w/170 Six	955
TRANSMISSION: Synchro-Silent	1025 (std.), 1230, 1400 (opt.)	SuperVan: 1400; Van & Pickup: 1230; Opt. Van & Pickup: 1400
Optional	Fully synchronized 3-speed	—
TIRES: Tubeless, No.—size	3-speed Cruise-O-Matic	Opt. 3-spd. Cruise-O-Matic
Optional	5—5.50-13 4 PR†	5—7.35-14 8 PR
	5—6.95-14 4 PR††	5—7.00-14 8 PR TT††
	5—6.95-14 8 PR†	5—7.00-14 10 PR TT*
WHEELS: No.—Rim Size	5—13 x 5½J or 14 x 5½J	5—14 x 5½J

*Requires optional 6.95-14 8 PR tires; standard SuperVan includes HD underbody structure

†Whitewall tires also available

††Includes Regular Van & Pickup—HD Econoline ornament, stabilizer bar and HD underbody structure; SuperVan—stabilizer bar

‡Also available w/Limited-Slip differential

‡‡Included with SuperVan 4930-lb. GVW

*Nylon only SuperVan with 4930 GVW Package

**Standard on SuperVan and Pickup

TT = Truck-type

*Includes 1075-lb. front springs

The specifications contained herein were in effect at the time this folder was approved for printing. Ford Division of Ford Motor Company reserves the right to discontinue models at any time or change specifications or design without notice and without incurring obligation. All options and accessories illustrated or referred to as optional or available in this folder are at extra cost. For the price of the model with the equipment you desire, see your Ford Dealer.

PRODUCTS OF