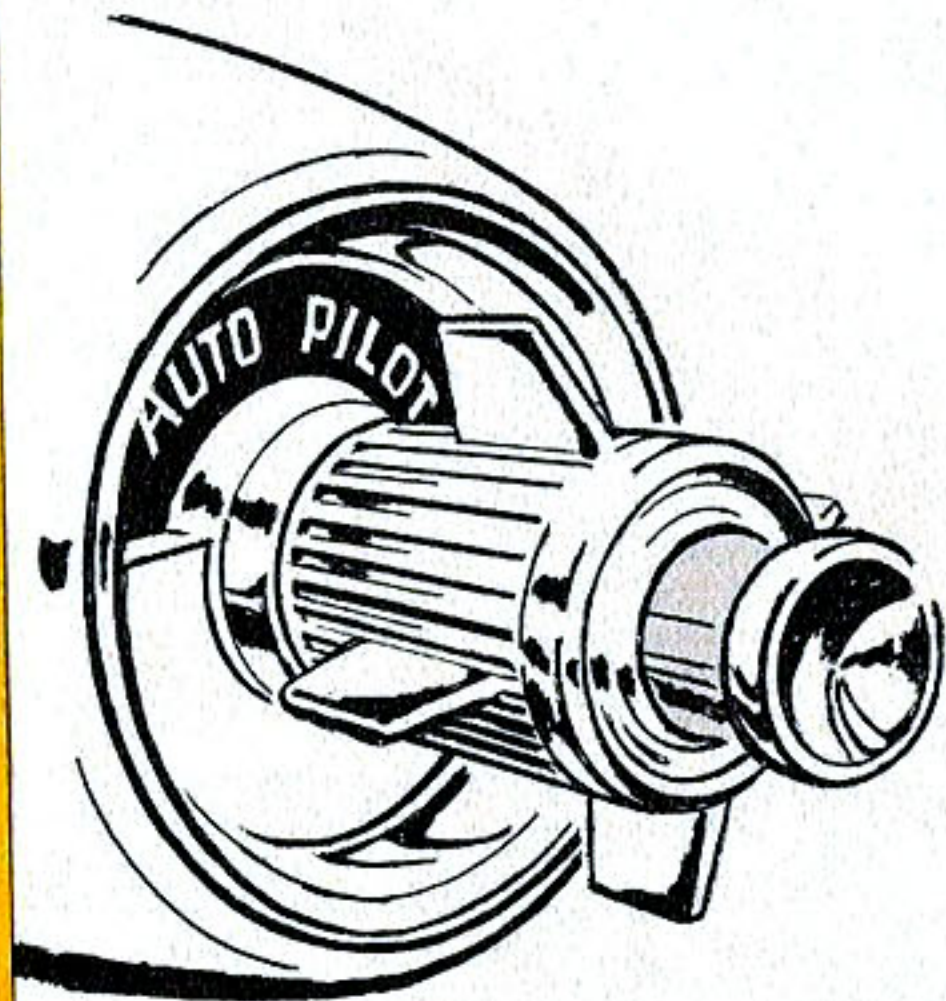
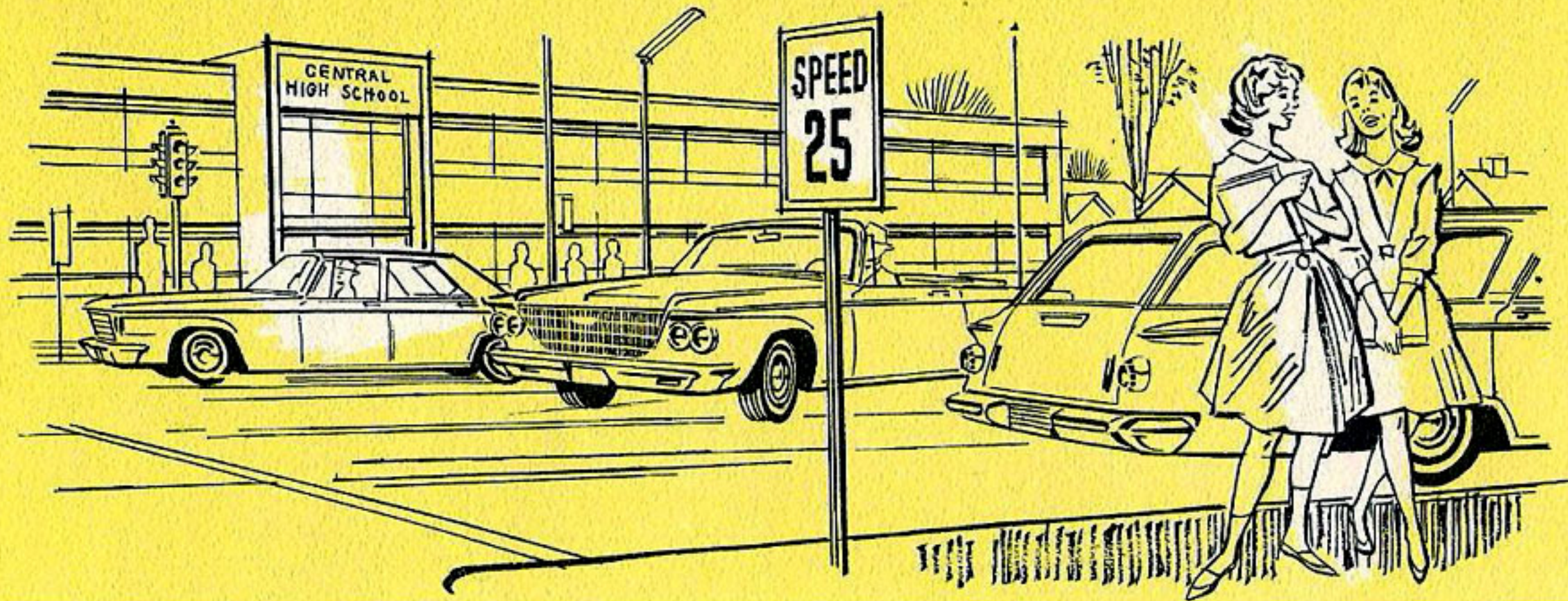




WHENEVER YOU DRIVE...  
WHEREVER YOU GO...



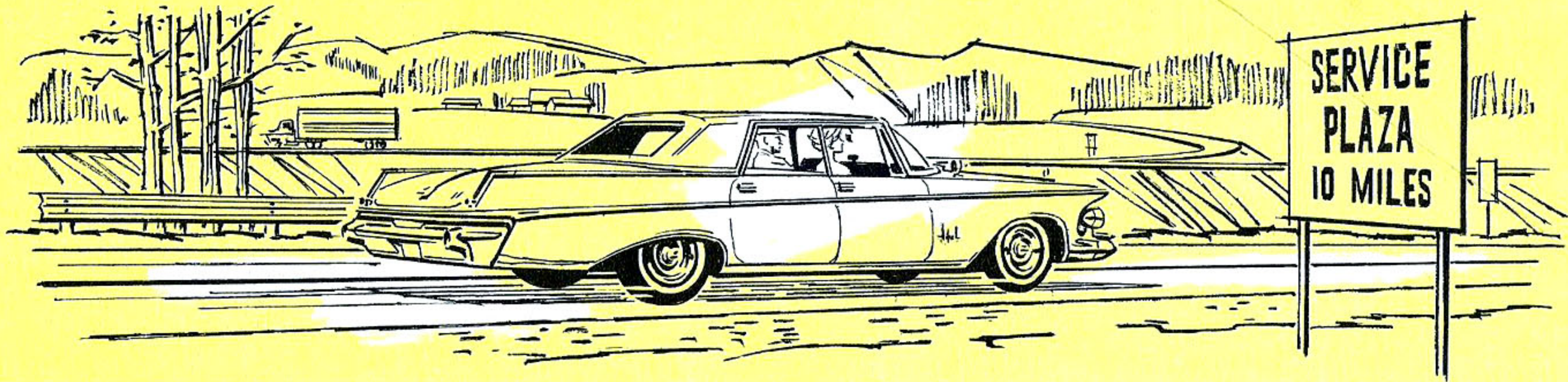




## **THE DRIVING IS EASIER . . .**

When driving in city traffic, you keep alert. You don't watch your speedometer. You have complete confidence in your superb new Chrysler or Imperial. Auto Pilot does the speed watching for you and reminds you accurately and quietly when you reach your desired speed.



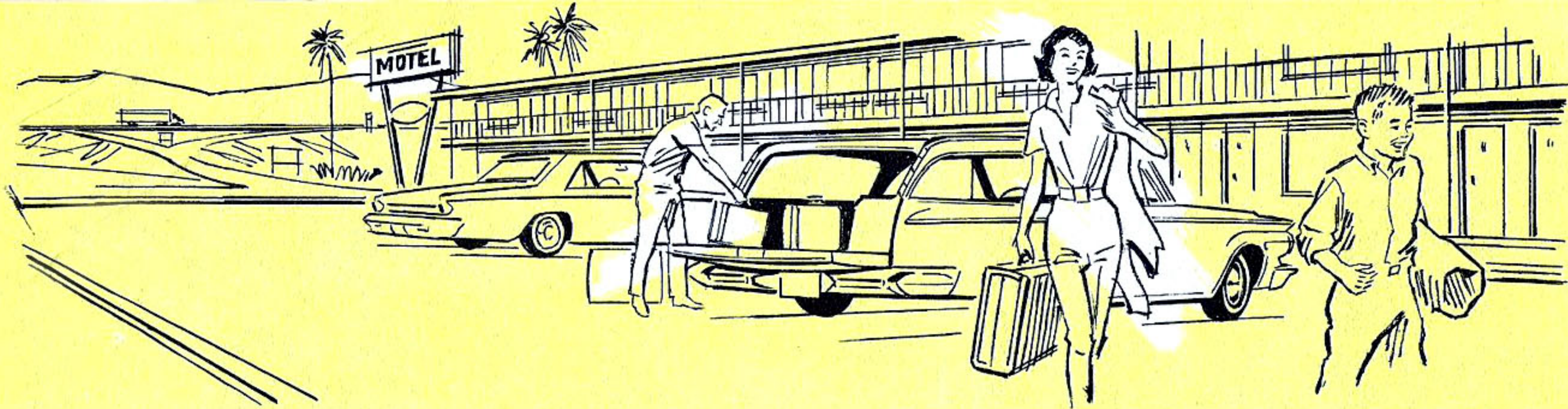


## **THE MILES SEEM SHORTER . . .**

On the open highway, you drive relaxed with your foot off the accelerator. You can relax and enjoy your trip more. Auto Pilot automatically maintains your desired speed up hill and down, mile after mile, hour upon hour.

Yet you retain instant control for slowing, stopping or accelerating. You are always the master of Auto Pilot, and your powerful Chrysler engine.





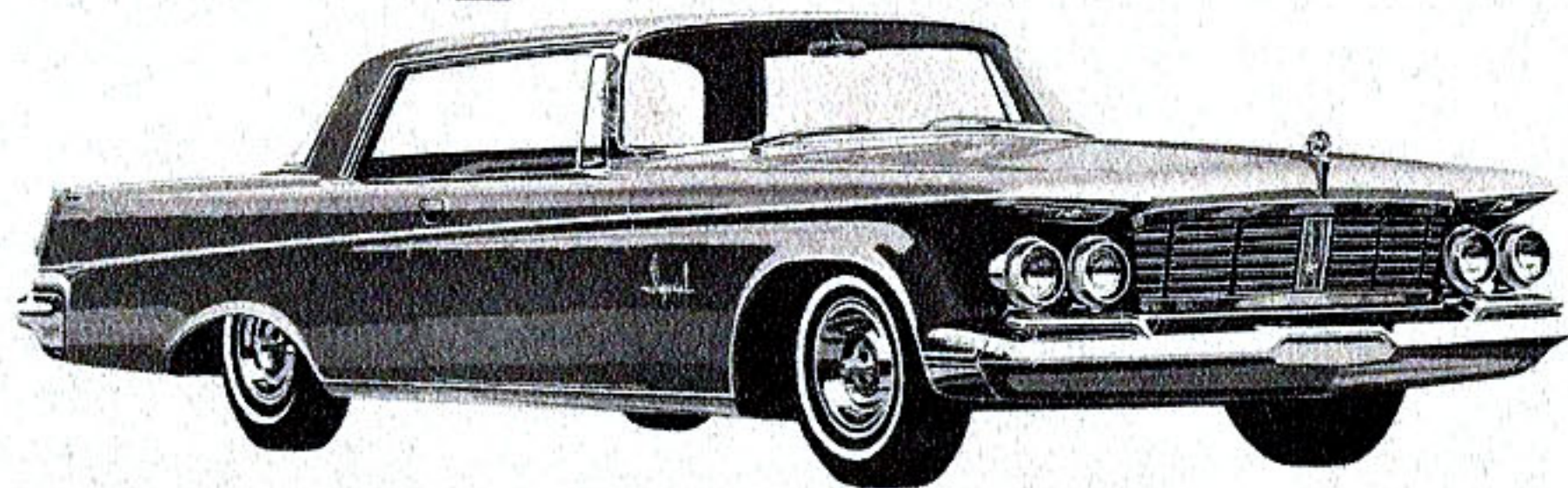
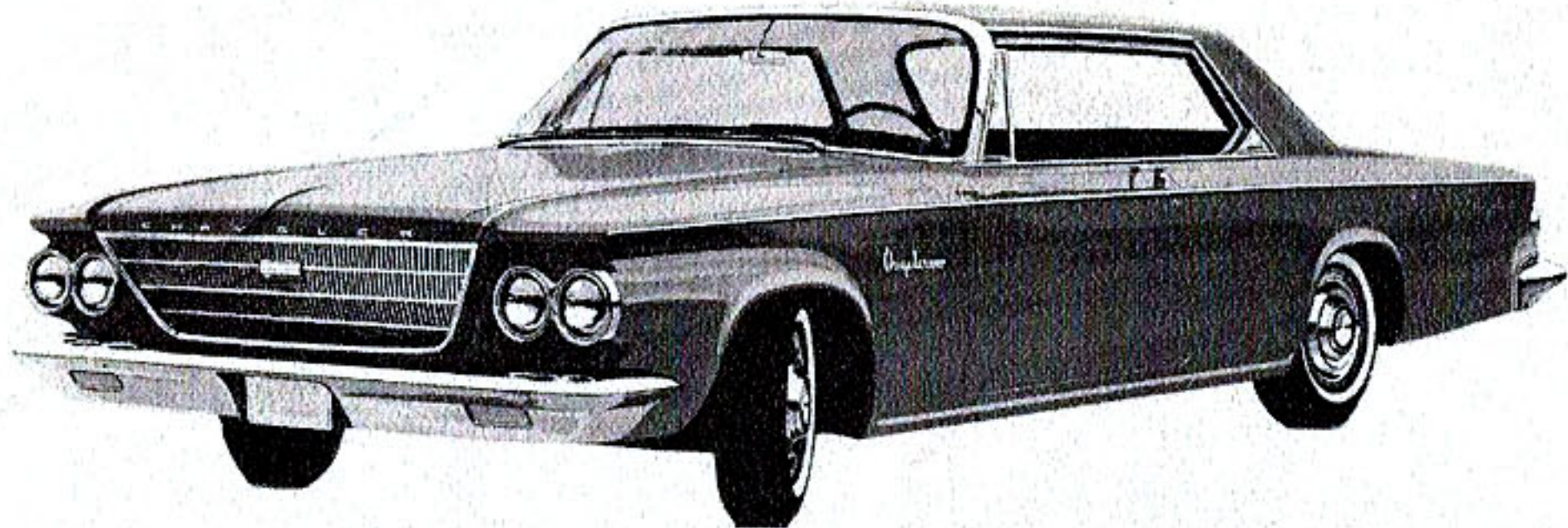
## **THE TIME PASSES FASTER . . .**

On every trip, you are less aware of the hours you travel. You arrive refreshed, having covered more miles in a day than you imagined. You've enjoyed your trip and your quiet, smooth Chrysler or Imperial because Auto Pilot has

done the work and provided constant and accurate control of your speed.

You've been a better driver, a more alert driver, a safer driver.





\*Auto Pilot was the first automatic accelerator control offered on an American automobile. Chrysler is first to make Auto Pilot standard equipment on an American automobile -- the New Yorker Salon. Auto Pilot is optional on all other Chrysler and Imperial models.

AUTO PILOT\* is safe because you are always in command. Automatic control can be released by either touching your brake pedal or by pushing in on the control knob. You can override automatic control, too, by pushing through the resistance on your accelerator for fast, safe passing with maximum acceleration.

Auto Pilot is economical because it insures perfect throttle control for less fuel consumption.

Auto Pilot gives more driving comfort by automatically taking the work out of highway driving.

Auto Pilot provides greater confidence by reminding you when you reach your desired speed in city driving.



# . . . with **AUTO PILOT** for **CHRYSLER and IMPERIAL**

Just set the convenient instrument panel dial to your desired speed. Then drive in your usual manner. When you reach the pre-set speed you feel a gentle nudge of the accelerator on your foot telling you you've reached your desired speed.

For completely automatic control, pull the control knob when you feel the nudge of the pedal and remove your foot from the accelerator. Then, drive relaxed with your eyes on the road.

A touch of your brake pedal instantly returns the control to manual. To return to automatic control, just accelerate until you feel the nudge and remove your foot from the accelerator.

