



2006

# ESCAPE



*BREAK OUT IN A  
FUN-TO-DRIVE RIDE.*

There's never a shortage of fun behind the wheel of a Ford Escape. So when you've had enough of simply daydreaming, count on Escape to take you there, wherever "there" may be. Escape proudly accompanies Escape Hybrid, Explorer and Expedition in the confidently capable lineup of Ford SUVs. Packed with smart technology designed to enhance everything from your on- and off-road driving experiences to your overall safety, no matter the terrain, Ford SUVs are built to do more. Escape proves the point by continuing its 2-year reign as the best-selling small SUV.\*

\*Based on 2003 and 2004 calendar year sales.

## Contents

Power/Capability	2	Luxury/Safety & Security	4
Interior/Versatility	3	Specifications	5-7



# START PLANNING YOUR NEXT GREAT ESCAPE.



Escape is the ultimate getaway machine. Its name alone inspires you to head out on an adventure, and the available Intelligent 4WD System practically leads the way. With up to 3500 lbs.\* of towing capacity available, you can bring some fun extras along. And if you encounter a few obstacles en route, Escape's 4-wheel independent suspension will help take 'em all in stride. Planning a motorhome vacation? Bring Escape along. Escape XLS with the manual transmission can be flat-towed behind another vehicle.



Every Ford Escape is classified as a Low Emissions Vehicle. The available **Duratec 30-3.0L V6 Engine** combines with a smooth-shifting 4-speed automatic transmission to deliver 200 hp and 193 lb.-ft. of torque. The

**Duratec 23-2.3L I-4 Engine** delivers 153 hp and 152 lb.-ft. of torque mated to either the 5-speed manual transmission or the available automatic.

\*When properly equipped.



Escape's available **Intelligent 4WD System** is always on and always working. The system monitors traction (5000 times per second – much faster than any person could) and automatically adjusts torque distribution as needed so you can just relax and have fun.



# KEEP YOURSELF INFORMED AND ENTERTAINED.



Escape Limited features a clever message center that can display everything from your average fuel economy to the fact that there's a lamp out. Driving entertainment comes in your choice of several sound systems. A 6-disc in-dash CD setup is standard on XLT, XLT Sport and Limited, while the available Audiophile® Sound System (left) features SIRIUS Satellite Radio\* capability. To further enhance your travels, power windows, power door locks and power sideview mirrors are standard on all Escape models. For your driving convenience, steering wheel-mounted speed control and a power driver's seat are also available.

Escape's available **Audiophile Sound System** provides deep, powerful vibes with its 6-disc in-dash CD changer, 7 strategically placed speakers and SIRIUS Satellite Radio capability.

\*Call SIRIUS toll-free at (888) 539-7474 for more information. See your Ford Dealer for installation and activation details.



Thanks to Escape's wide stance, you get a full 99.2 cu. ft. of passenger space – more than enough to seat 5 comfortably. An available power 6-way seat further enhances driver comfort, while the available **Leather Comfort Group** gives you a leather-wrapped steering wheel and leather-trimmed seats (shown above).



Standard on every Escape, versatile **60/40 Split-Folding Rear Seats** make quick work of reconfiguring the rear cargo area. The seats fold flat to give you a cavernous 62.8 cu. ft. of cargo space to fill.

# SPOIL YOURSELF IN ESCAPE LIMITED.



The **Limited Luxury Comfort Package**, available exclusively on Escape Limited, includes the Reverse Sensing System, heated sideview mirrors (left) for all-weather visibility, and heated front seats (center) to keep it cozy. The Audiophile® Sound System is also included with its 6-disc in-dash CD changer (right), 320 watts of peak audio power and 8" subwoofer.

## FEEL SAFE AND SECURE.



Built into every Escape, the innovative **Personal Safety System**® uses a network of sensors to enhance protection for the driver and front passenger in certain frontal collisions. The system customizes the deployment of the dual-stage front airbags based on several criteria including the driver's seat position, whether the front safety belts are in use, and the overall severity of the impact. The latest in occupant-sensing technology, the **Front-Passenger Sensing System** plays an important role within the Personal Safety System. It measures the amount of pressure exerted on the seat to determine whether the front-passenger airbag should be activated or not. A message illuminates on the instrument panel to indicate when the airbag has been automatically disabled.

The available **Safety Package** gives the Escape driver and passenger front-seat side airbags and 1st- and 2nd-row side-curtain airbags, in addition to the driver and passenger front airbags in the standard Personal Safety System. That's a grand total of 6 airbags providing added side-impact and rollover protection. A rollover sensor in the Safety Canopy™ System directs deployment of the side-curtain airbags in the event of a rollover or certain side-impact collisions. And the Safety Canopy is designed to remain inflated for a longer duration to enhance protection in a rollover event.



## MODEL HIGHLIGHTS

Each series includes the standard equipment of the previous series, except where additions/exceptions are noted.



### XLS

Duratec 23–2.3L I-4 engine • 5-speed manual transmission or available 4-speed automatic • 15" styled-steel wheels • Grey molded-in-color front and rear bumpers and bodyside moldings • Black roof side rails • AM/FM stereo with single-CD player and clock • Cloth seats



### XLT

4-speed automatic transmission • 16" aluminum wheels • Front fog lamps • Roof side rails with 2 horizontal crossbars • Privacy glass • AM/FM stereo with 6-disc in-dash CD changer • Premium cloth seats with 6-way power driver's seat • Speed control • Perimeter alarm • Floor mats



### XLT SPORT

Duratec 30–3.0L V6 engine • 16" bright machined-aluminum wheels • P235/70R16 all-season OWL tires • A-gloss painted Dark Shadow Grey front and rear bumpers, bodyside moldings and wheel-lip moldings • Black side step bars



### LIMITED

Monochromatic exterior appearance • Premium leather-trimmed seats • Overhead console with dual storage bins • Automatic headlamps • Auto-dimming rearview mirror • Message center • Illuminated visor vanity mirrors

## STANDARD FEATURES

### MECHANICAL

4-wheel independent suspension  
100,000-mile tune-up interval\*  
Front-wheel drive  
Fuel tank — 16.5-gallon capacity  
Intelligent 4WD System (4WD models only)  
Power rack-and-pinion steering  
Stabilizer bar — Front  
Unibody construction

### SAFETY/SECURITY

3-point safety belt restraint system for all seating positions  
4-wheel Anti-lock Brake System (ABS)  
Adjustable head restraints at all seating positions  
Battery saver with headlamps-off delay  
Belt-Minder® safety belt reminder  
Brake/shift interlock with automatic transmission  
Fuel pump inertia shutoff switch  
Headlamps-on alert chime  
Height-adjustable shoulder safety belts — Front  
Key-in-ignition alert chime  
LATCH system for child-safety seats — Rear outboard positions  
Personal Safety System®  
Remote keyless-entry system with 2 key fobs  
SecuriLock® passive anti-theft system  
Side-intrusion door beams

### SEATING

Dual reclining front bucket seats  
Rear 60/40 split-folding seats  
Removable rear-seat cushion

### INTERIOR

Accessory delay for power windows  
Air conditioning  
Assist handles — 2 front, 2 rear†  
Cargo area floor hooks (4)  
Floor console — Storage bin and dual cupholder with removable insert  
Glove compartment with lock  
Head restraints — Adjustable (5)  
Illuminated entry system  
Power door locks with child-safety rear door locks  
Power point — Front console  
Power windows — With one-touch-down driver's-side feature  
Rear floor heat ducts  
Tachometer  
Tilt steering wheel  
Visor vanity mirrors — Dual covered

### EXTERIOR

Grille — Black surround with black mesh center  
Headlamps — Aerodynamic halogen clear-lens  
Liftgate with flip-up glass  
Mirrors — Power sideview with manual-fold feature  
Rear-window defroster  
Roof side rails (with crossbars on XLT, XLT Sport and Limited)  
Solar-tinted glass (door glass, quarter windows and rear window)  
Windshield wipers — Front: variable-intermittent with washer;  
rear: 2-speed with washer

\*Under normal driving conditions with routine fluid and filter changes.

\*\*Always wear your safety belt and secure children in the rear seat.

†Rear assist handles not available with Safety Package.

Horsepower, torque, fuel economy numbers and comparisons based on 2005 competitive models, publicly available information and Ford certification data at time of publication. Some features discussed may be optional. Vehicles shown may contain optional equipment. Features shown may be offered only in combination with other options or subject to additional ordering requirements or limitations. Following publication, certain changes in standard equipment, options and the like, or product delays may have occurred which would not be included in these pages. Your Ford Dealer is the best source for up-to-date information. Ford Division reserves the right to change product specifications at any time without incurring obligations.



## FEATURES & OPTIONS

XLS MANUAL — FWD or 4WD					
XLS — FWD or 4WD					
XLT — FWD or 4WD					
XLT SPORT — FWD or 4WD					
LIMITED — FWD or 4WD					
MECHANICAL					
●	●	●	—	—	Duratec 23–2.3L I-4 engine
—	—	○	●	●	Duratec 30–3.0L V6 engine
●	—	—	—	—	5-speed manual transmission
—	●	●	●	●	4-speed automatic transmission
●	●	—	—	—	15" styled-steel wheels
○	○	—	—	—	15" aluminum wheels
—	—	●	—	—	16" aluminum wheels
—	—	●	●	●	16" bright machined-aluminum wheels
—	—	○	○	○	Full-size spare — Wheel and tire
●	●	—	—	—	P225/75R15 all-season BSW tires
—	—	●	—	●	P235/70R16 all-season BSW tires (XLT FWD only)
—	—	●	●	—	P235/70R16 all-season OWL tires (XLT: optional on FWD; standard on 4WD)
●	●	●	●	●	Power front disc/rear drum brakes (FWD only on XLT, XLT Sport and Limited)
—	—	●	●	●	Power 4-wheel disc brakes (V6 4WD only)
SAFETY/SECURITY					
○	○	○	○	○	Safety Package — Includes Safety Canopy™ System (side-curtain airbags with rollover sensor for both rows of seating) and front-seat side airbags
SEATING					
●	●	—	—	—	Cloth trim
—	—	●	●	—	Cloth trim — Premium-grade
—	—	○	○	●	Leather Comfort Group — Includes leather-trimmed seats and leather-wrapped steering wheel (premium leather on Limited)
—	—	●	●	●	6-way power driver's seat
—	—	●	●	●	Driver and front-passenger seatback map pockets
INTERIOR					
●	●	—	—	—	AM/FM stereo/single-CD player, clock and 4 speakers with MP3 and satellite radio capability
—	—	●	●	●	AM/FM stereo with 6-disc in-dash CD changer, clock and 4 speakers
—	—	○	○	—	AM/FM stereo/single-CD/cassette player, clock and 4 speakers with MP3 and satellite radio capability
—	—	○	○	○	AM/FM Audiophile® Sound System with 6-disc in-dash CD changer, clock, 7 speakers (including an 8" subwoofer) and satellite radio capability
—	—	—	—	●	Auto-dimming rearview mirror
○	○	○	○	○	Cargo Convenience Group — Includes cargo area retractable cover and storage bin
○	○	●	●	●	Convenience Group — Includes speed control, perimeter alarm and front and rear carpeted floor mats
●	—	—	—	—	Floor console — Flow-through with manual transmission short-throw floor shifter, storage bin and dual cupholder with removable insert
—	●	●	●	●	Floor console — Flow-through with automatic transmission floor shifter, storage bin and dual cupholder with removable insert
—	—	—	—	○	Limited Luxury Comfort Package - Audiophile Sound System with 6-disc in-dash CD changer, clock, 7 speakers (including an 8" subwoofer) and satellite radio capability - Premium leather-trimmed seats with perforated inserts - Leather-wrapped steering wheel - Heated driver and front-passenger seats - Heated sideview mirrors - Reverse Sensing System

XLS MANUAL — FWD or 4WD					
XLS — FWD or 4WD					
XLT — FWD or 4WD					
XLT SPORT — FWD or 4WD					
LIMITED — FWD or 4WD					
INTERIOR (continued)					
—	—	—	—	●	Message center
—	—	—	—	●	Overhead console with dual storage bins (not available with power moonroof)
—	—	●	●	●	Painted warm-steel finish on instrument panel and front-door switch bezels
—	—	—	—	●	Visor vanity mirrors — Illuminated
EXTERIOR					
—	—	—	—	●	Automatic headlamps
●	●	●	—	—	Bumpers and bodyside moldings — Molded-in-color grey
—	—	—	●	—	Bumpers, bodyside moldings and wheel-lip moldings — Painted A-gloss Dark Shadow Grey
—	—	—	—	●	Bumpers, bodyside moldings and wheel-lip moldings — Painted body-color
—	—	●	●	●	Fog lamps — Front, round
●	●	●	●	—	Liftgate molding and door handles — Molded-in-color black
—	—	—	—	●	Liftgate molding and door handles — Painted body-color
—	—	○	○	○	Power moonroof with sunshade and mini-overhead console
—	—	●	●	●	Privacy glass (rear doors/quarter windows and rear window)
○	○	●	●	●	Roof-rail crossbars
○	○	○	●	—	Side step bars* — Black
—	—	●	○	○	Trailer Tow Package — Includes Class II 3500-lb. receiver and trailer wiring harness with 4-pin connector
—	—	○	—	—	XLT No Boundaries™ Package** - No Boundaries Rack System - Class II Trailer Tow Package - Molded-in-color grey wheel-lip moldings - Black side step bars - 16" bright machined-aluminum wheels - P235/70R16 all-terrain OWL tires - Unique premium cloth trim - Front and rear appearance skid plates

● Standard ● Select Availability ○ Optional — Not Available

\*Requires 15" aluminum wheels on XLS models.

\*\*Not available with moonroof. Requires Duratec 30–3.0L V6 engine.

Audiophile is a registered trademark of Audiophile, Inc.

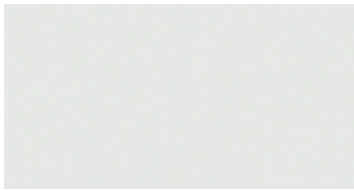
## ENGINES

	2.3L I-4	3.0L V6
Horsepower (hp @ rpm)	153 @ 5800	200 @ 6000
Torque (lb.-ft. @ rpm)	152 @ 4250	193 @ 4850
Towing capacity <sup>†</sup> (lbs.)	1500	3500 <sup>††</sup>

<sup>†</sup>Maximum capacity shown is for properly equipped vehicle with required equipment and a 150-lb. driver. Weight of additional options, equipment, passengers and cargo must be deducted from this weight. For additional information, see your Ford Dealer.

<sup>††</sup>With Class II Trailer Tow Package.

## EXTERIOR COLORS



Oxford White



Titanium Green Metallic



Silver Metallic



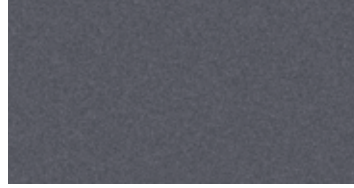
Blazing Copper Metallic



Gold Ash Metallic



Norsea Blue Metallic



Dark Shadow Grey Metallic



Redfire Metallic



Sonic Blue Metallic



Black

Ford uses clearcoat paint for beauty and protection. Colors shown are representative only. Not all colors are available on all models. See your dealer for actual paint/trim options.

## WHEELS



15" Styled-Steel Wheel  
Standard on  
XLS Manual and XLS



15" Aluminum Wheel  
Optional on  
XLS Manual and XLS



16" Aluminum Wheel  
Standard on XLT  
OWL tires standard on 4WD,  
optional on FWD



16" Bright  
Machined-Aluminum Wheel  
Standard on XLT Sport/  
XLT No Boundaries  
Package/Limited  
OWL tires standard on XLT Sport  
and XLT No Boundaries Package

## INTERIOR COLORS

### MEDIUM/DARK PEBBLE

### MEDIUM/DARK FLINT

### EBONY BLACK

### XLS/XLT/XLT NO BOUNDARIES™ PACKAGE

●	●	Oxford White
●		Gold Ash Metallic
●	●	Redfire Metallic
●	●	Titanium Green Metallic
●	●	Norsea Blue Metallic
●	●	Sonic Blue Metallic
●	●	Silver Metallic
●	●	Dark Shadow Grey Metallic
●	●	Black
●	●	Blazing Copper Metallic*
		<b>XLT SPORT</b>
●	●	Oxford White
●	●	Redfire Metallic
●	●	Titanium Green Metallic
●	●	Norsea Blue Metallic
●	●	Sonic Blue Metallic
●	●	Silver Metallic
●	●	Black
●	●	Blazing Copper Metallic*
		<b>LIMITED</b>
●	●	Redfire Metallic
●	●	Titanium Green Metallic*
●	●	Silver Metallic
●	●	Dark Shadow Grey Metallic
●	●	Black

\*New for 2006.

### New-Vehicle Limited Warranty

We want your Ford Escape ownership experience to be the best it can be. So under this warranty, your new vehicle comes with 3-year/36,000-mile Bumper-to-Bumper Coverage, 5-year/50,000-mile Safety Restraint Coverage and 5-year/unlimited-mile Corrosion (Perforation) Coverage – all with no deductible. Please ask your Ford Dealer for a copy of this limited warranty.



Choose the insurance program that's designed for your vehicle – Ford Motor Company Insurance Services. Our program helps you receive the rates and service you deserve. Call 1-877-367-3847 or visit us at [www.fordvip.com](http://www.fordvip.com) for a no-obligation quote. Insurance offered by American Road Services Company (in CA, American Road Insurance Agency), a licensed agency and subsidiary of Ford Motor Company.



For a purchase or lease, the Ford **Extended Service Plan** (ESP) gives you "Peace-of-Mind" protection designed to cover key vehicle components and protect you from the cost of unexpected repairs. Ask your dealer for an ESP backed by Ford Motor Company and honored at all Ford dealerships.



Get the ride you want. Whether you plan to lease or finance, you'll find the choices that are right for you at Ford Credit. Ask your Ford Dealer for details or check us out at [www.fordcredit.com](http://www.fordcredit.com).



Designed for your vehicle by the company that built your vehicle, Genuine Ford Accessories provides many choices, professional dealer installation, and strong warranty protection. Discover the quality difference of Genuine Ford Accessories. See dealer for limited warranty details.